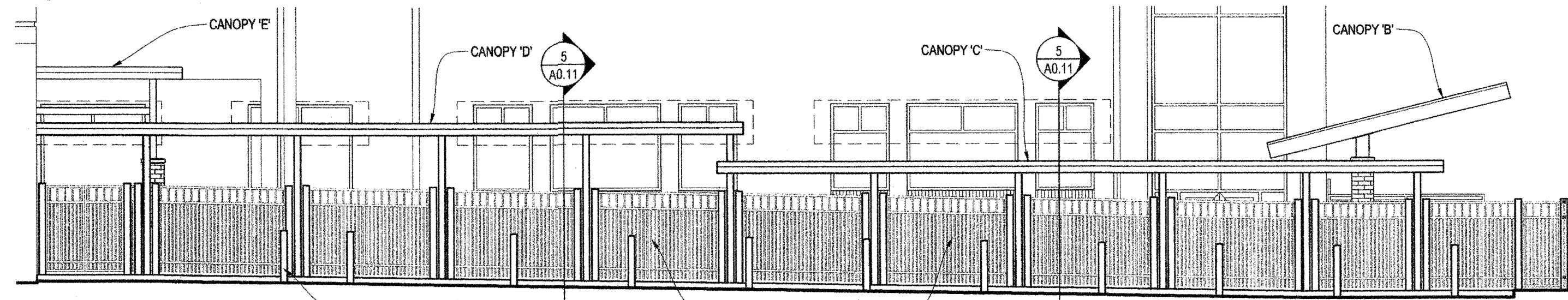
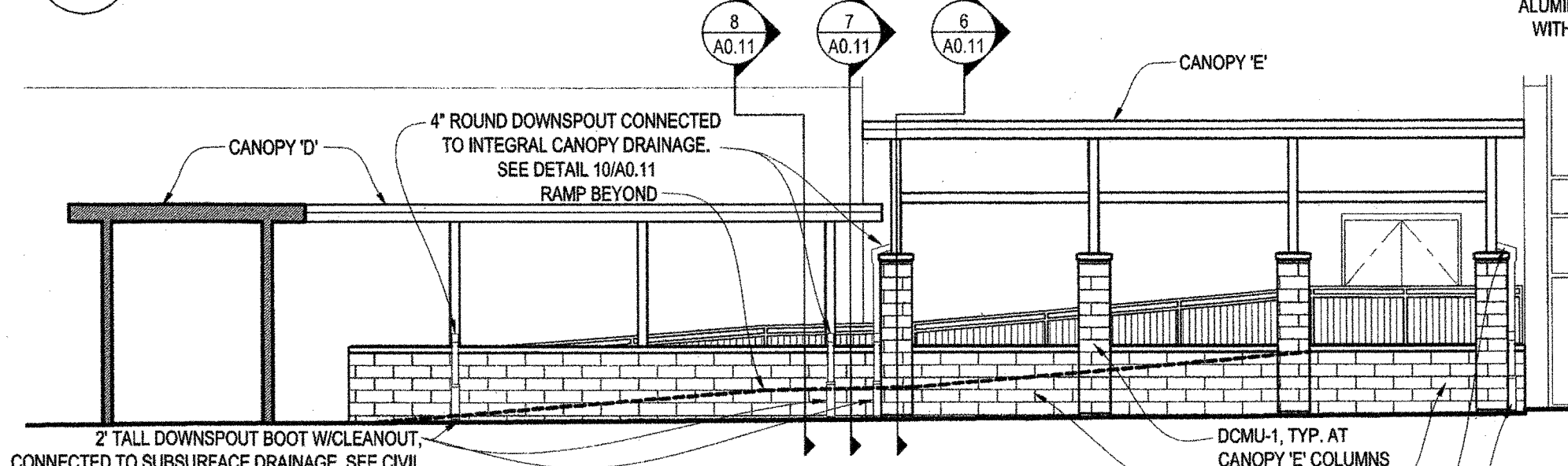


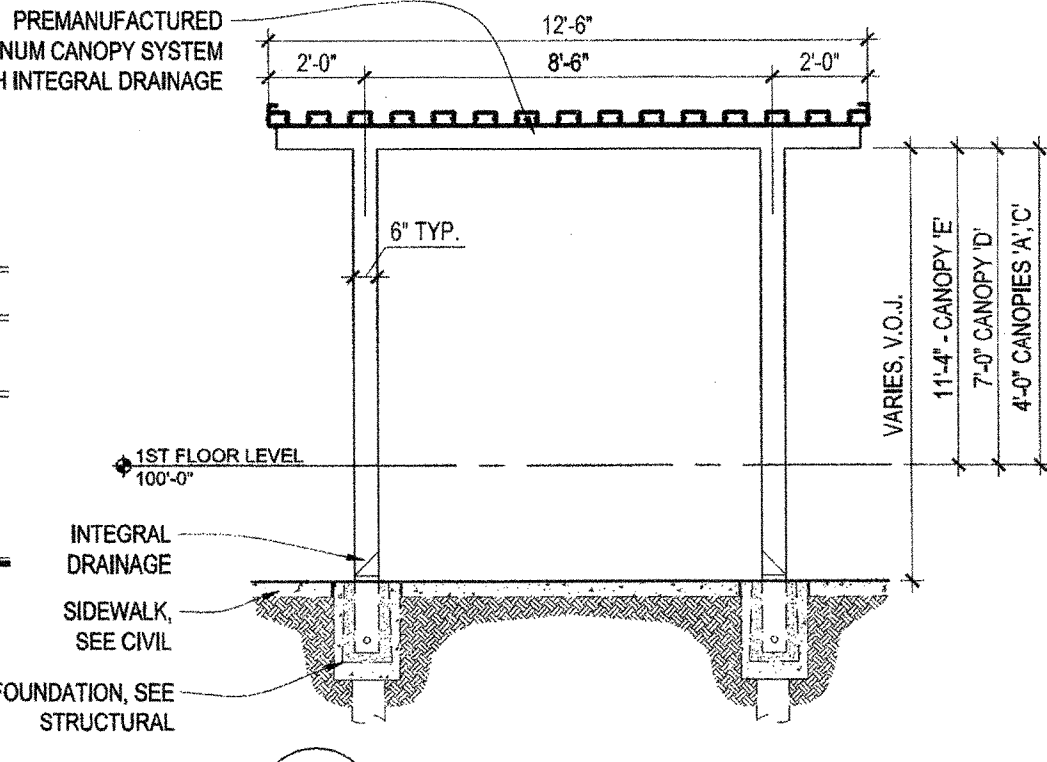
**2 CANOPY ELEVATION - S. LOPEZ STREET**  
A0.11 SCALE: 1/8" = 1'-0"



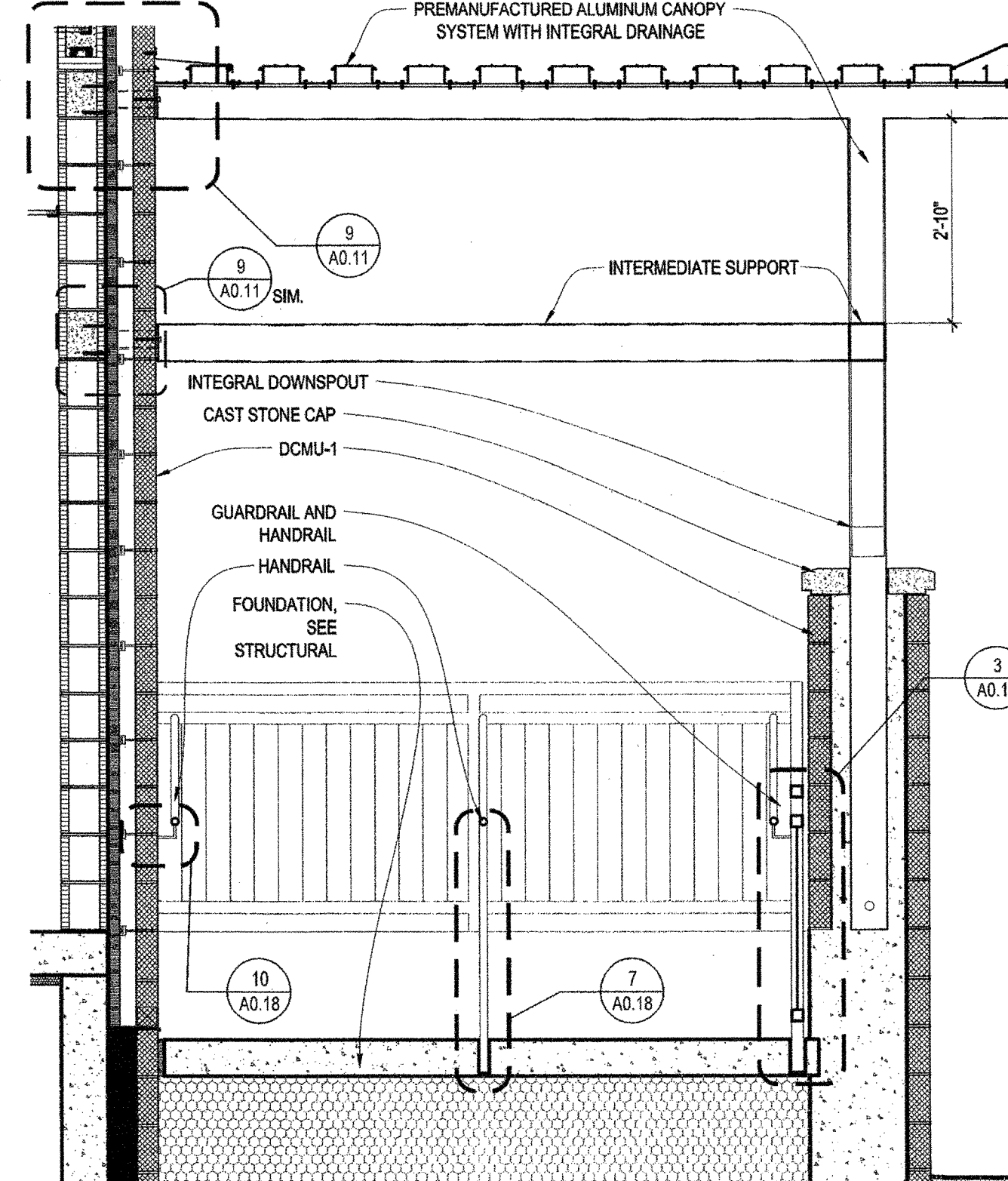
**3 CANOPY ELEVATION - PALMYRA STREET**  
A0.11 SCALE: 1/8" = 1'-0"



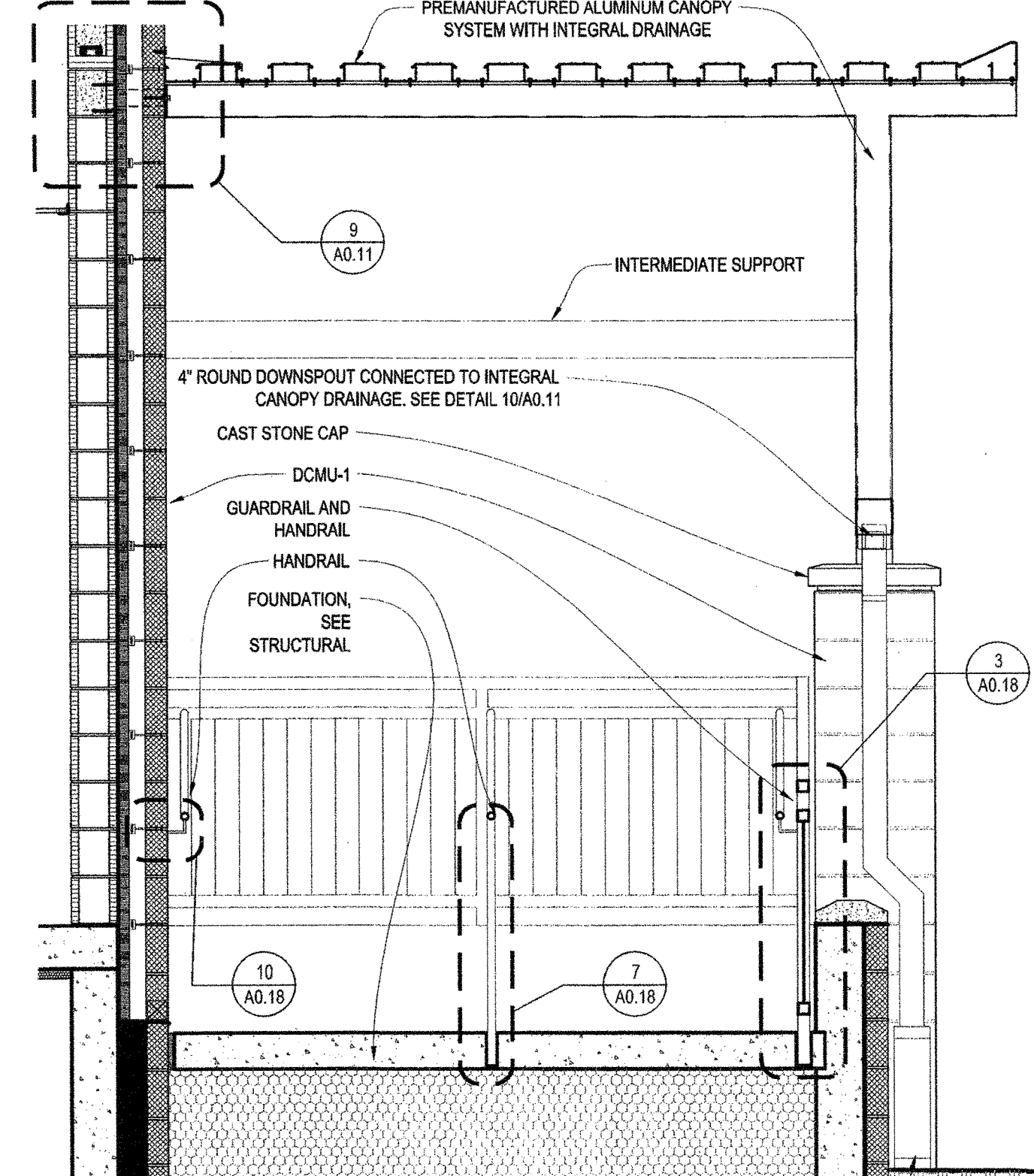
**4 CANOPY ELEVATION - PLAY AREA**  
A0.11 SCALE: 1/8" = 1'-0"



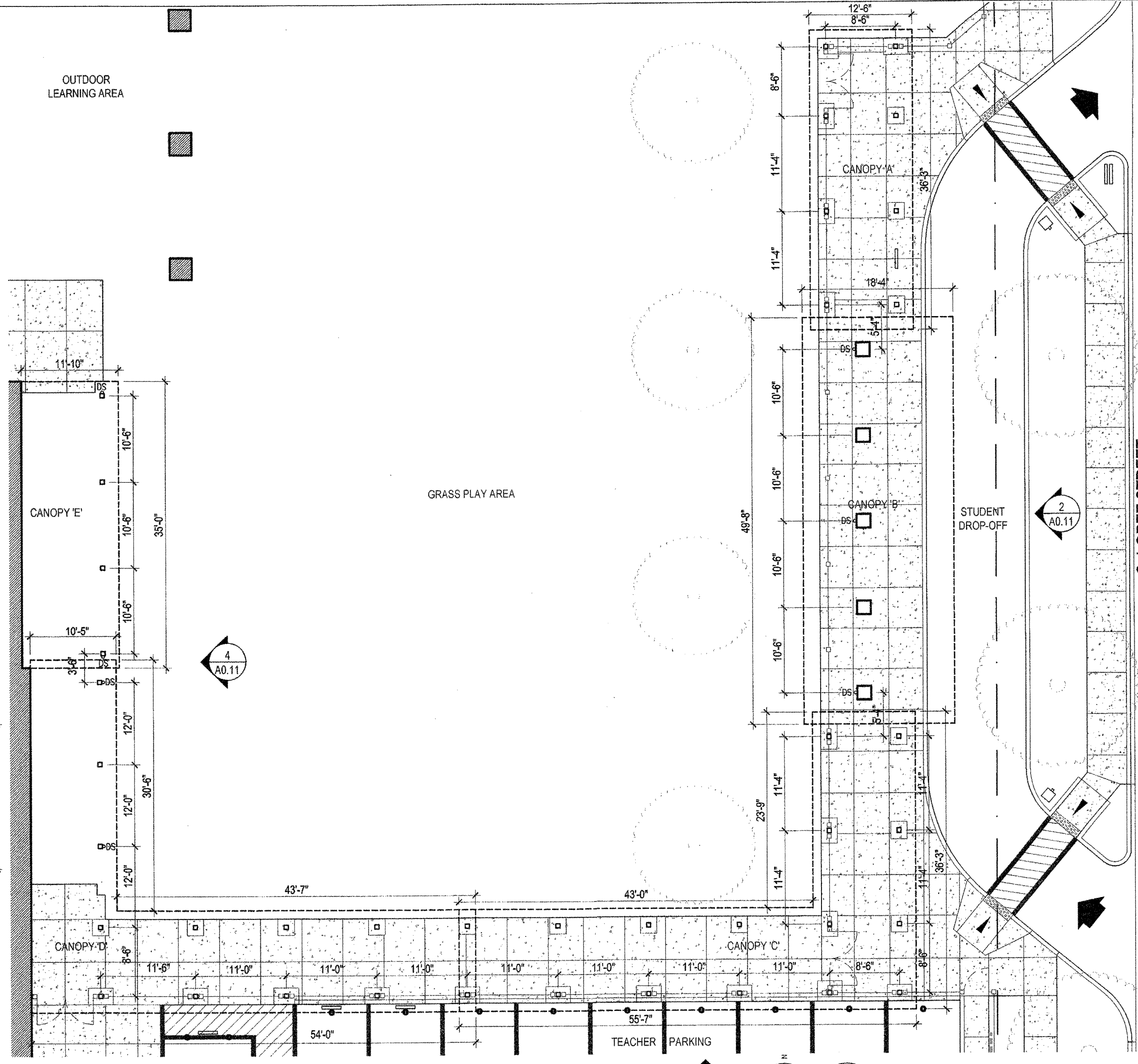
**5 CANOPY SECTION, TYP.**  
A0.11 SCALE: 1/4" = 1'-0"



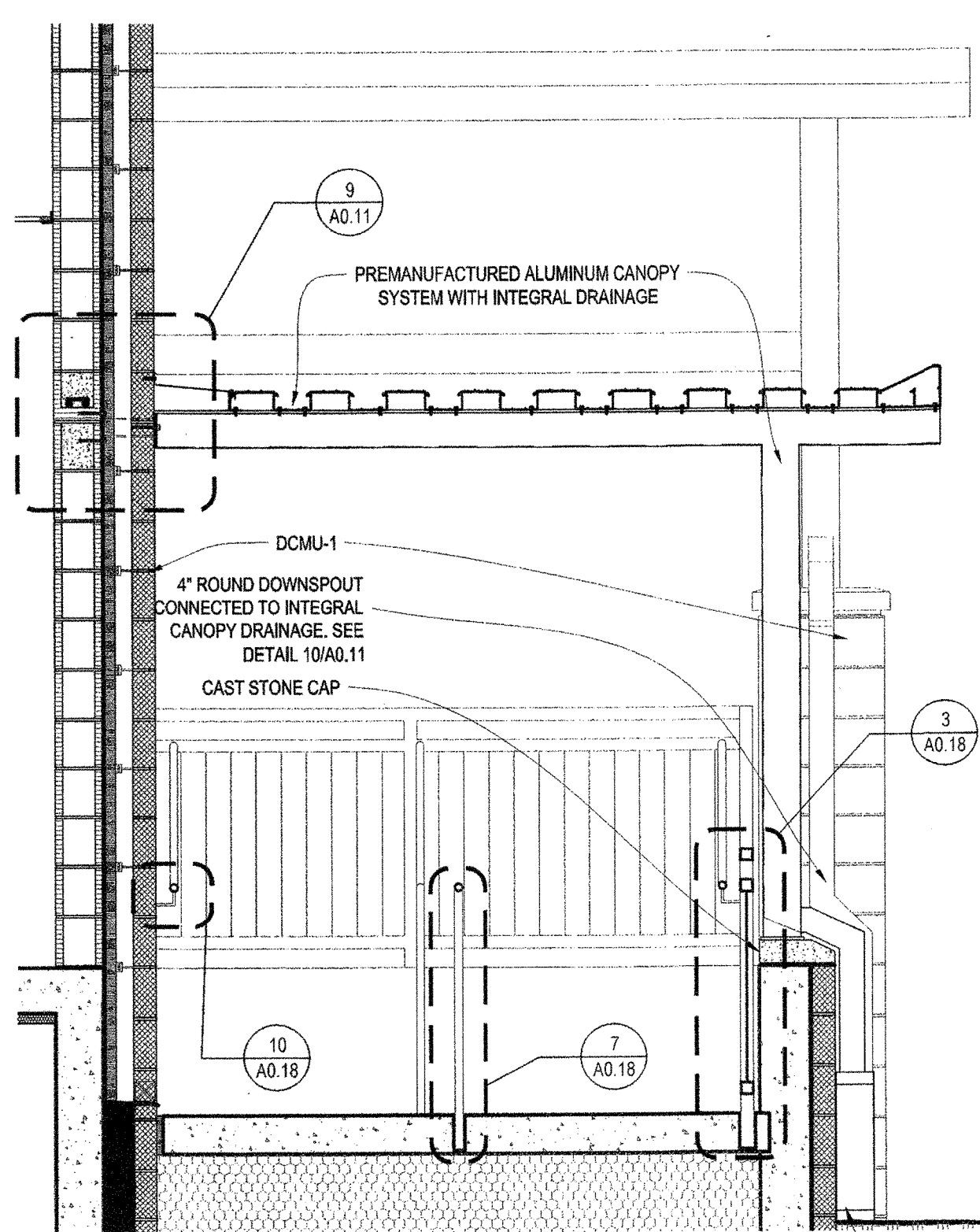
**6 CANOPY SECTION**  
A0.11 SCALE: 1/2" = 1'-0"



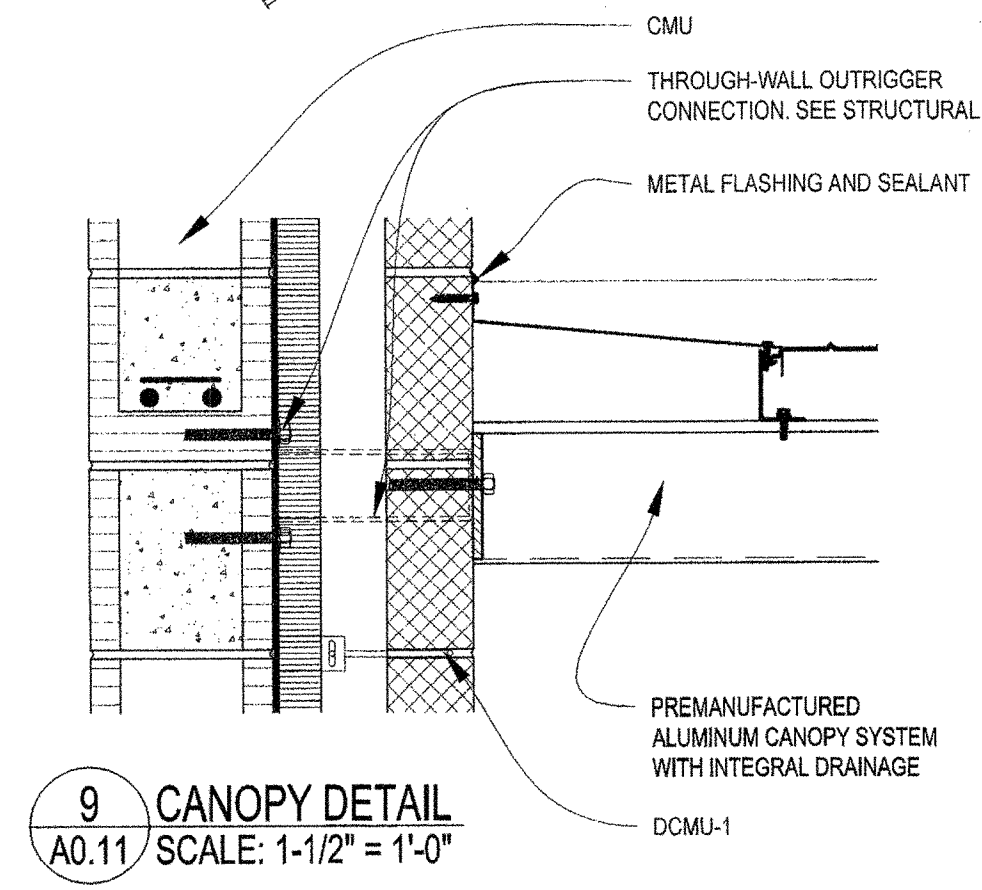
**7 CANOPY SECTION**  
A0.11 SCALE: 1/2" = 1'-0"



**1 PARTIAL SITE PLAN - CANOPIES**  
A0.11 SCALE: 3/32" = 1'-0"

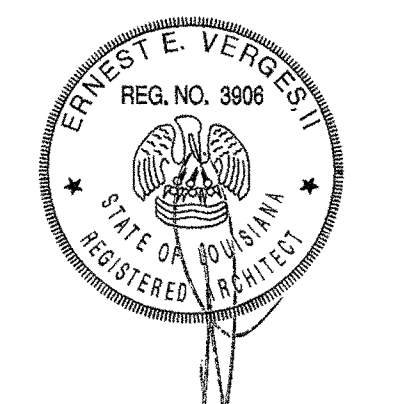


**8 CANOPY SECTION**  
A0.11 SCALE: 1/2" = 1'-0"



**9 CANOPY DETAIL**  
A0.11 SCALE: 1-1/2" = 1'-0"

**10 DOWNSPOUT CONNECTION DETAIL**  
A0.11 SCALE: 1-1/2" = 1'-0"



**NEW 3 SECTION ELEMENTARY SCHOOL  
AT FISK-HOWARD SCHOOL  
RECOVERY SCHOOL DISTRICT**

211 SLOPEZ STREET NEW ORLEANS, LOUISIANA 70119

DATE ISSUED:	7 DECEMBER, 2012
REVISED:	
REVISED:	
REVISED:	
REVISED:	
DRAWN BY:	CMB,MSR
CHECKED BY:	DGR, JFM
PHASE:	

BID DOCUMENTS

11085

TITLE:  
STUDENT DROP OFF  
CANOPIES

SHEET:  
**A0.11**