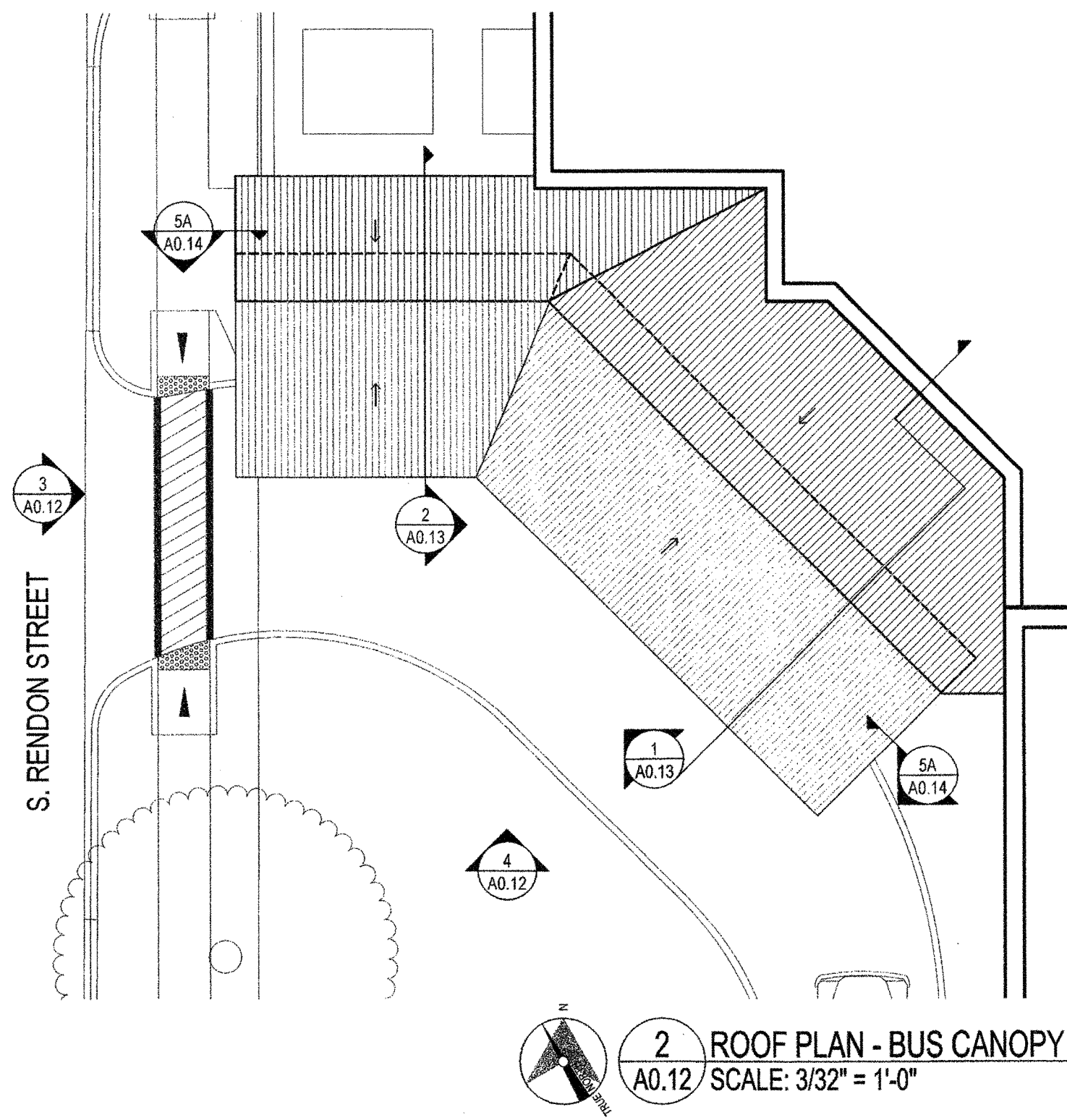
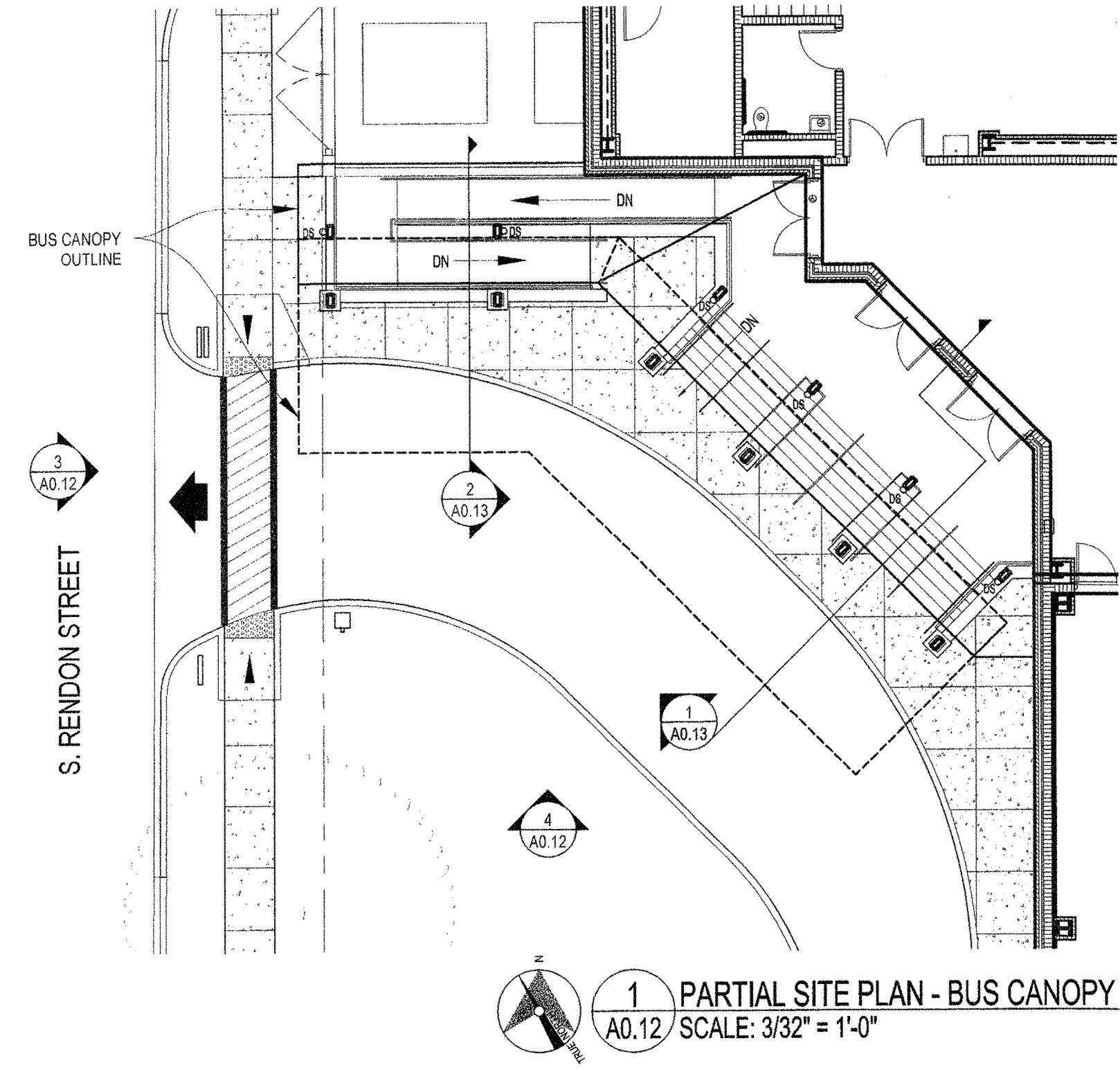


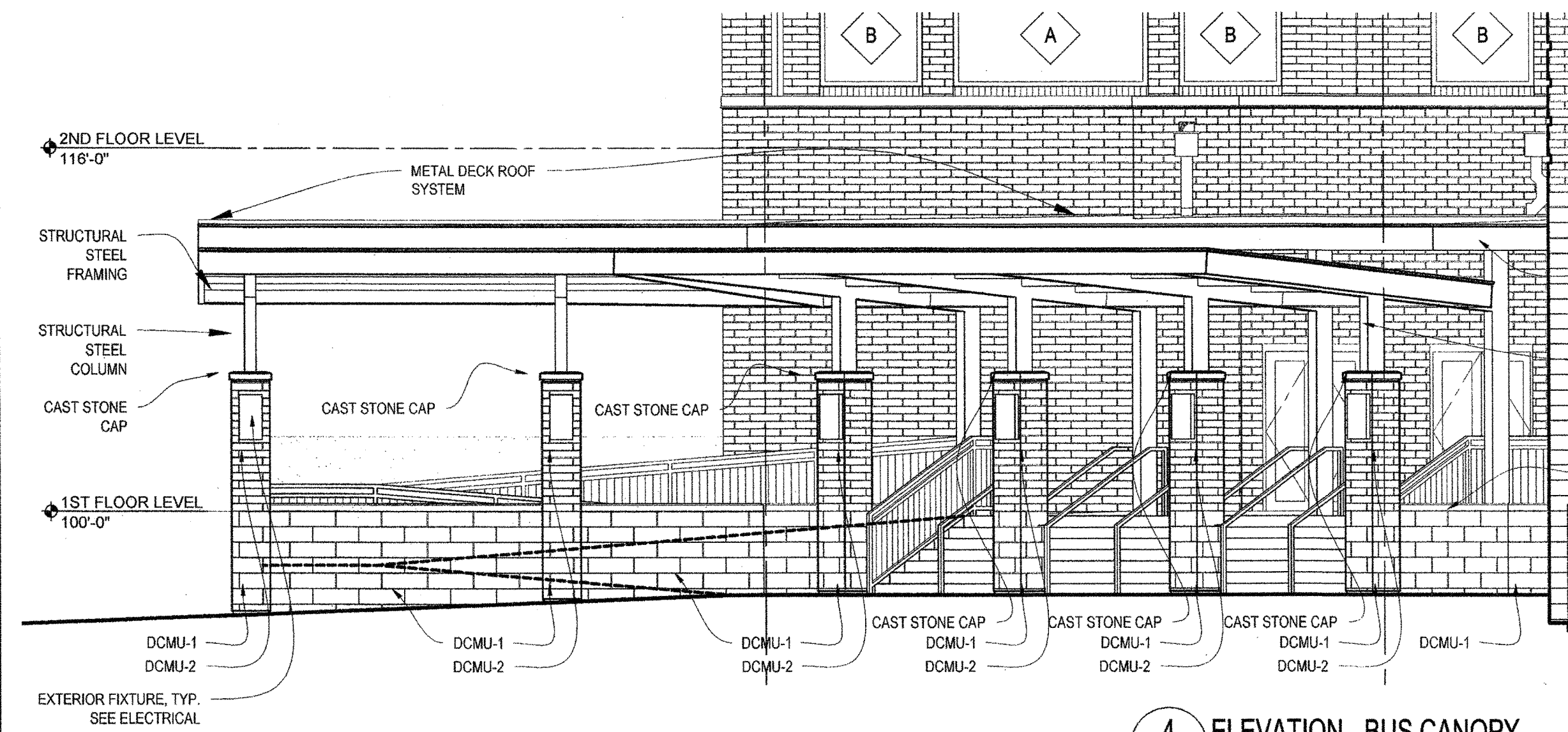
3 ELEVATION - BUS CANOPY
A0.12 SCALE: 3/16" = 1'-0"



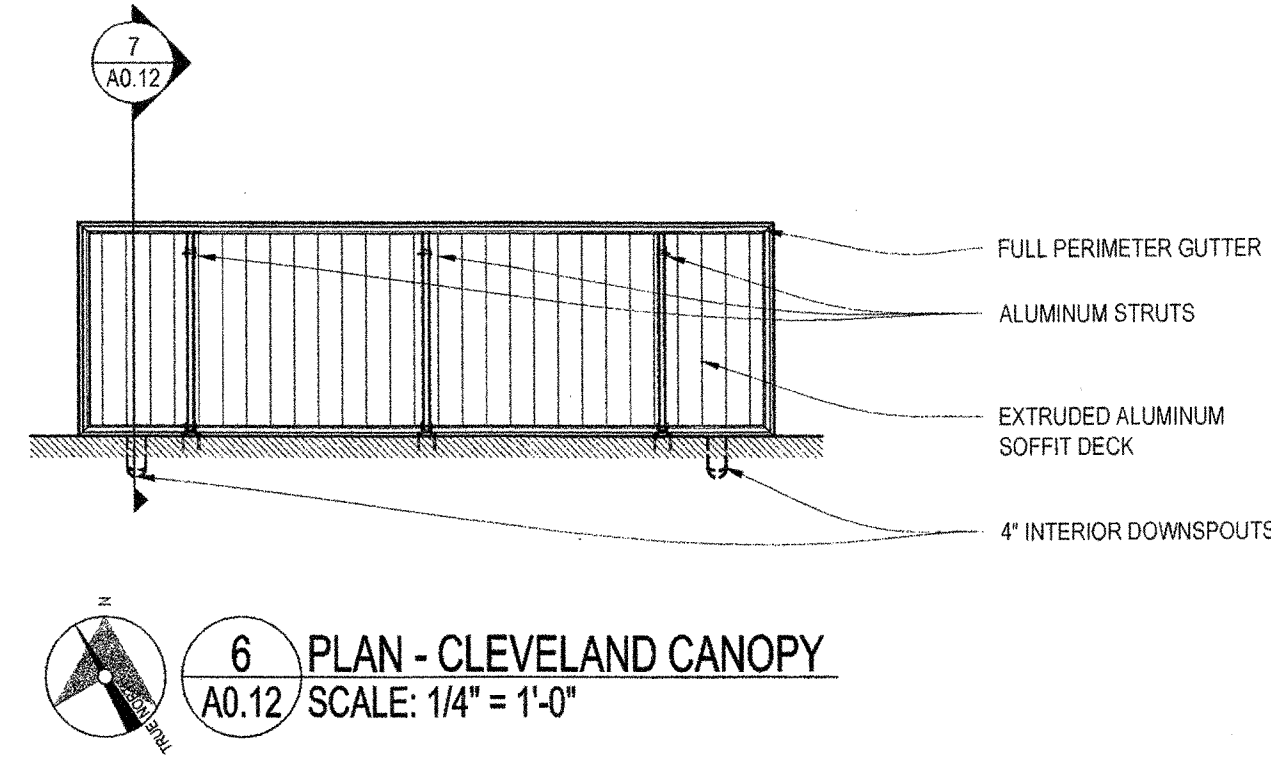
2 ROOF PLAN - BUS CANOPY
A0.12 SCALE: 3/32" = 1'-0"



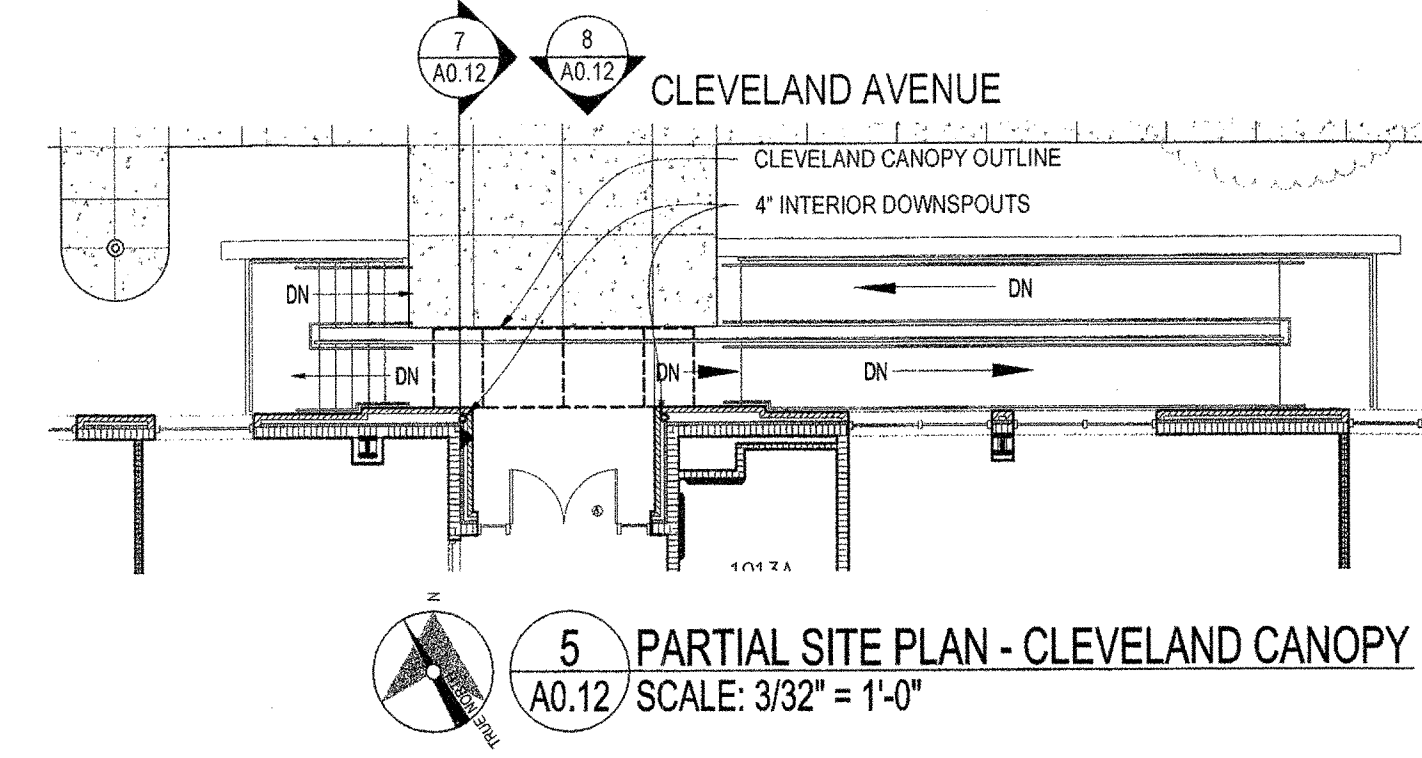
1 PARTIAL SITE PLAN - BUS CANOPY
A0.12 SCALE: 3/32" = 1'-0"



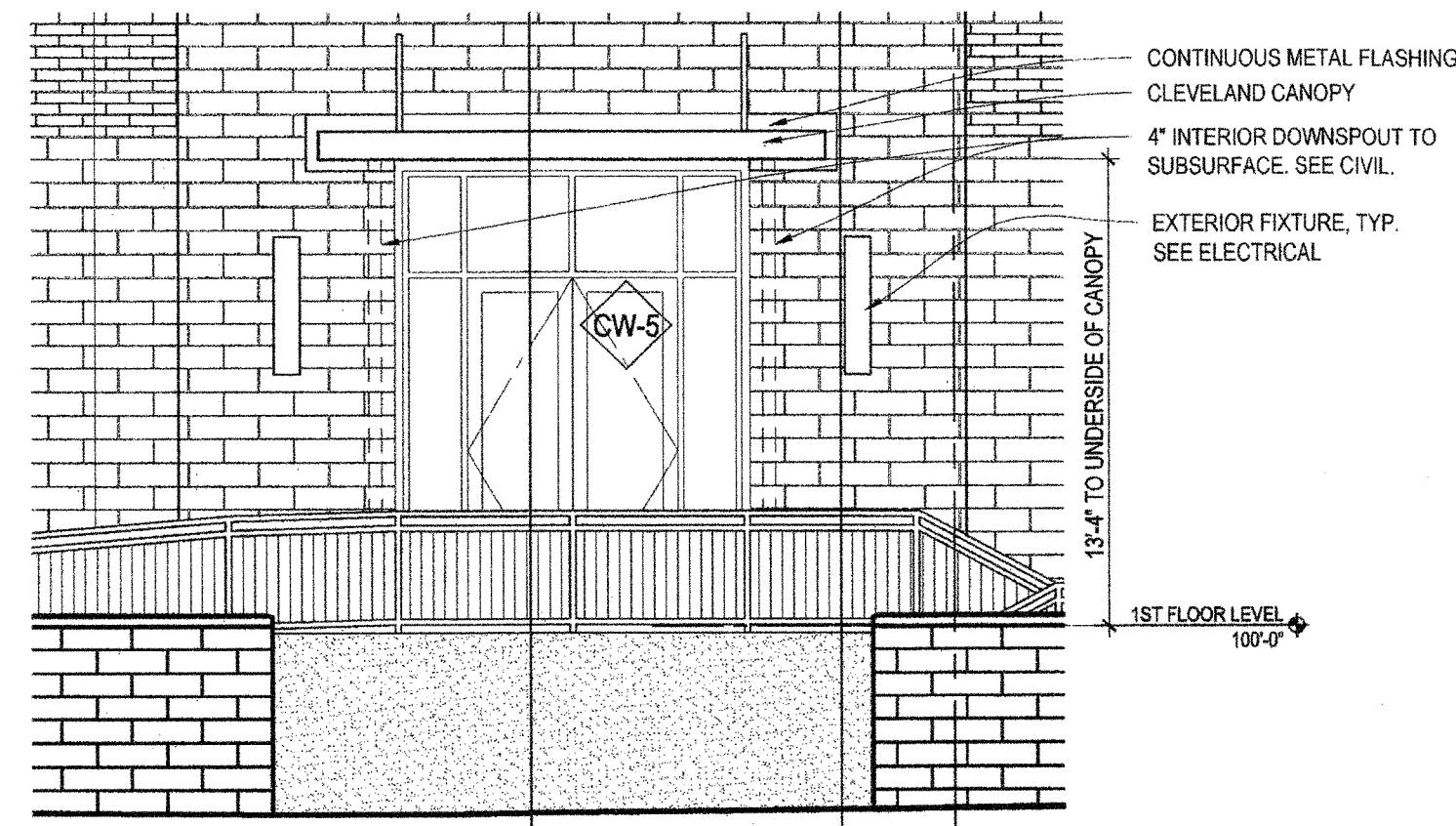
4 ELEVATION - BUS CANOPY
A0.12 SCALE: 3/16" = 1'-0"



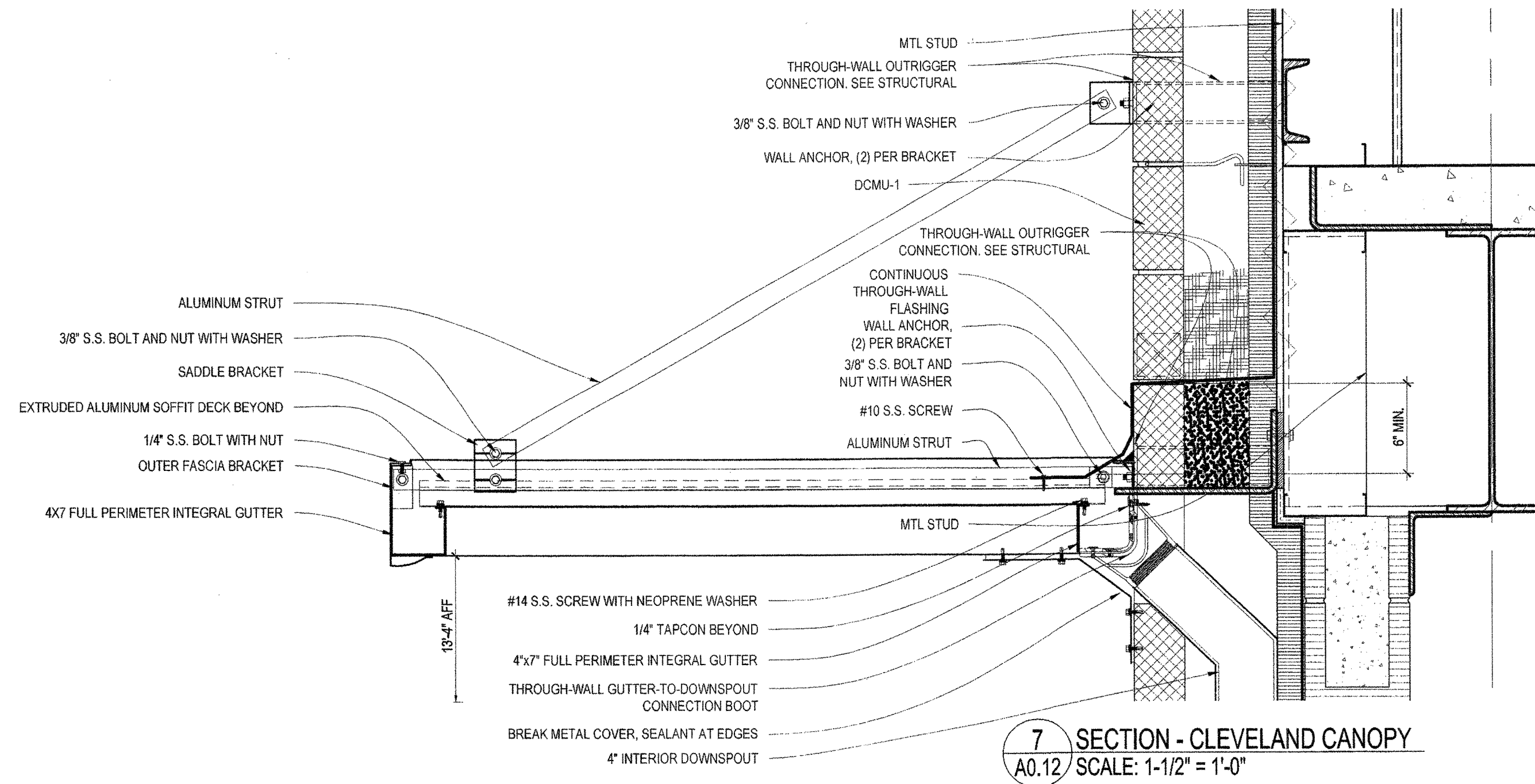
6 PLAN - CLEVELAND CANOPY
A0.12 SCALE: 1/4" = 1'-0"



5 PARTIAL SITE PLAN - CLEVELAND CANOPY
A0.12 SCALE: 3/32" = 1'-0"



8 ELEVATION - CLEVELAND CANOPY
A0.12 SCALE: 3/16" = 1'-0"



7 SECTION - CLEVELAND CANOPY
A0.12 SCALE: 1-1/2" = 1'-0"



**NEW 3 SECTION ELEMENTARY SCHOOL
AT FISK-HOWARD SCHOOL
RECOVERY SCHOOL DISTRICT**

211 S. LOPEZ STREET NEW ORLEANS, LOUISIANA 70119

DATE ISSUED:	7 DECEMBER, 2012
REVISED:	
REVISED:	
REVISED:	
REVISED:	
DRAWN BY:	MSR, CMB
CHECKED BY:	DGR, JFM
PHASE:	

BID DOCUMENTS

11085

TITLE:
**CANOPY
PLANS & DETAILS**

SHEET:

A0.12