



**NEW 3 SECTION ELEMENTARY SCHOOL  
AT FISK-HOWARD SCHOOL  
RECOVERY SCHOOL DISTRICT**

211 S. LOPEZ STREET  
NEW ORLEANS, LOUISIANA 70119

DATE ISSUED: 7 DECEMBER, 2012  
REVISED:  
REVISED:  
REVISED:  
REVISED:  
DRAWN BY: MSR, CMB  
CHECKED BY: DGR, JFM  
PHASE:

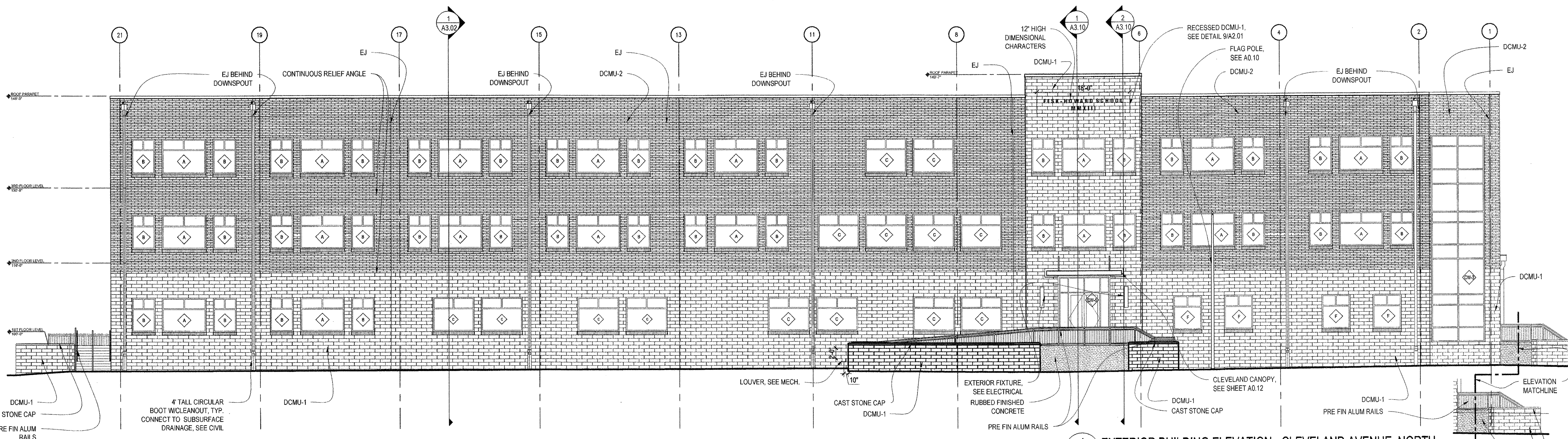
BID  
DOCUMENTS

11085

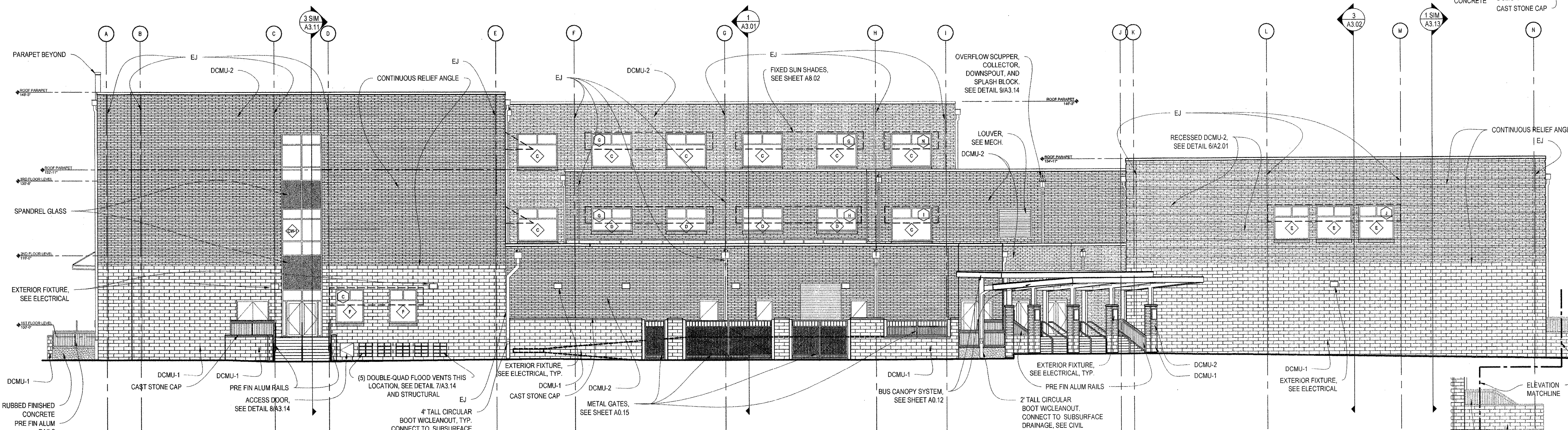
TITLE:  
EXTERIOR  
BUILDING ELEVATIONS

SHEET:

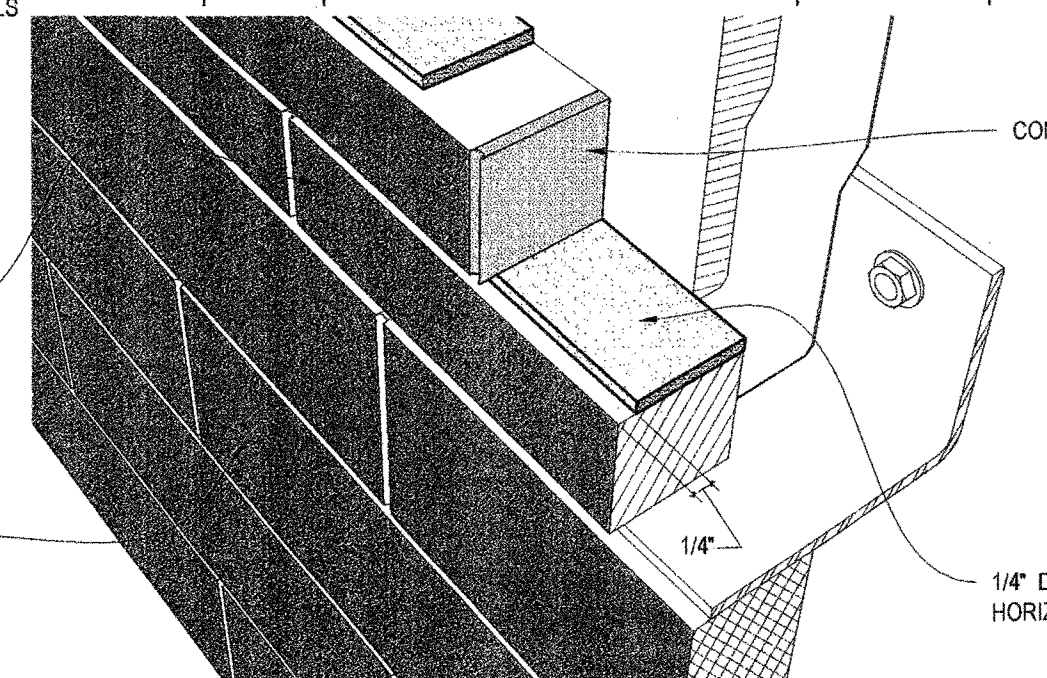
A2.01



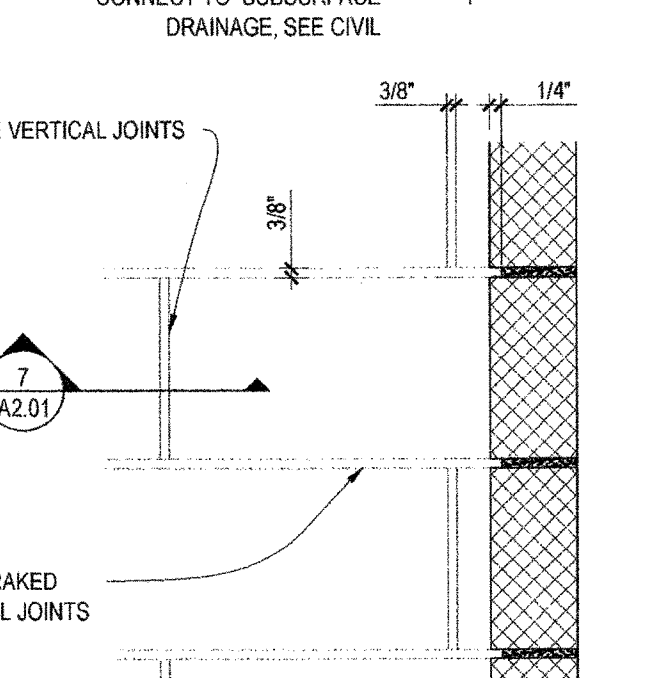
**1 EXTERIOR BUILDING ELEVATION - CLEVELAND AVENUE, NORTH**  
A2.01 SCALE: 3/32" = 1'-0"



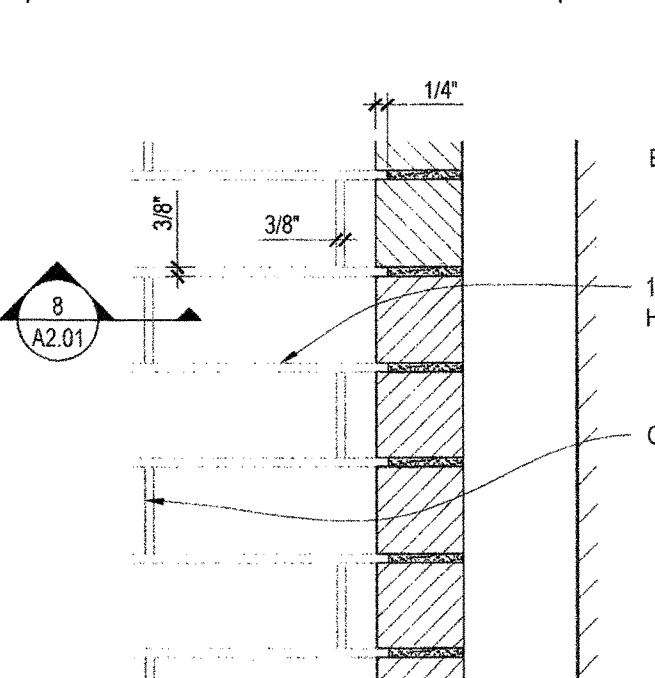
**2 EXTERIOR BUILDING ELEVATION - S. RENDON STREET, WEST**  
A2.01 SCALE: 3/32" = 1'-0"



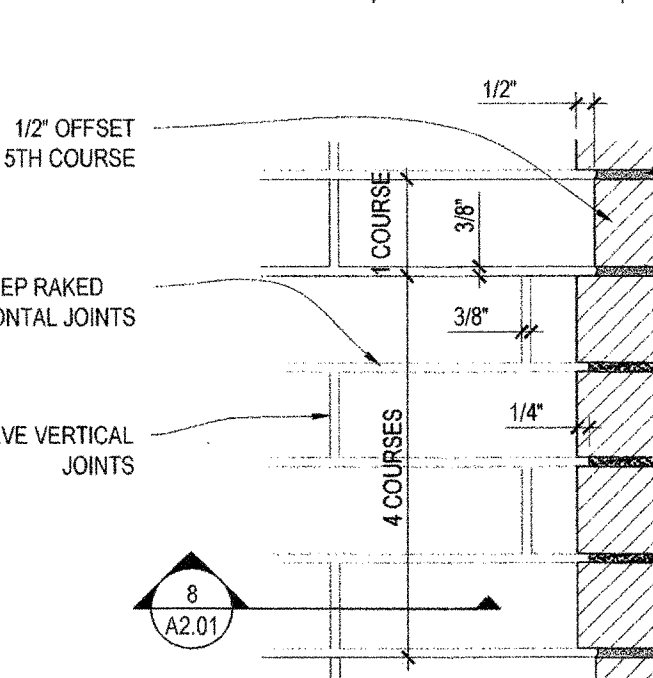
**3 DCMU-1 & DCMU-2 MORTER JOINT DETAIL, TYP.**  
A2.01 NOT TO SCALE



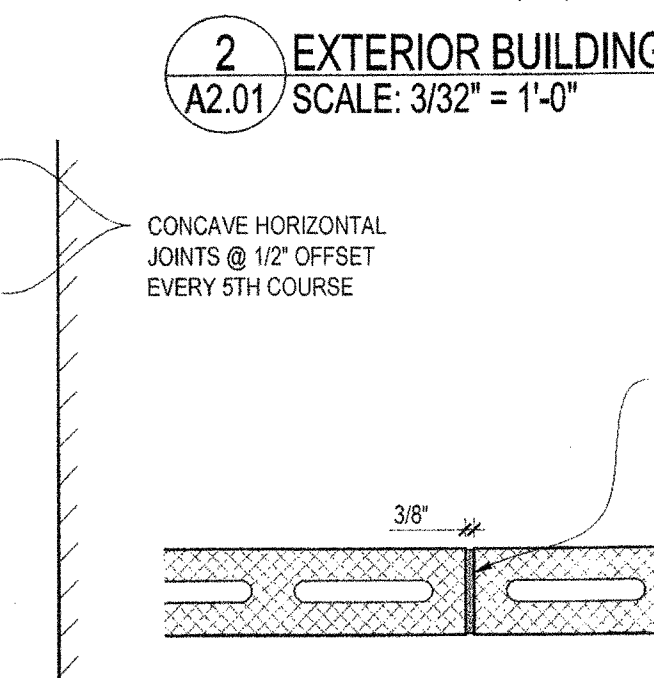
**4 DCMU-1 DETAIL, TYP.**  
A2.01 SCALE: 1-1/2" = 1'-0"



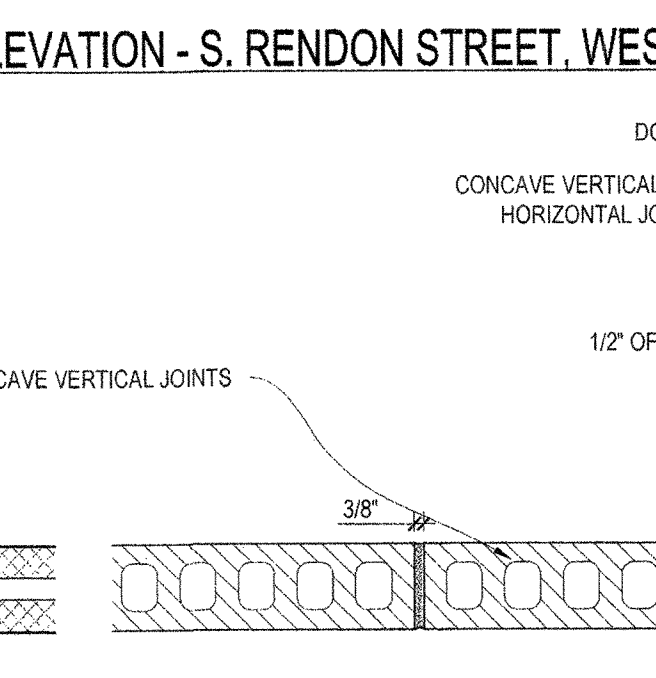
**5 DCMU-2 DETAIL, TYP.**  
A2.01 SCALE: 1-1/2" = 1'-0"



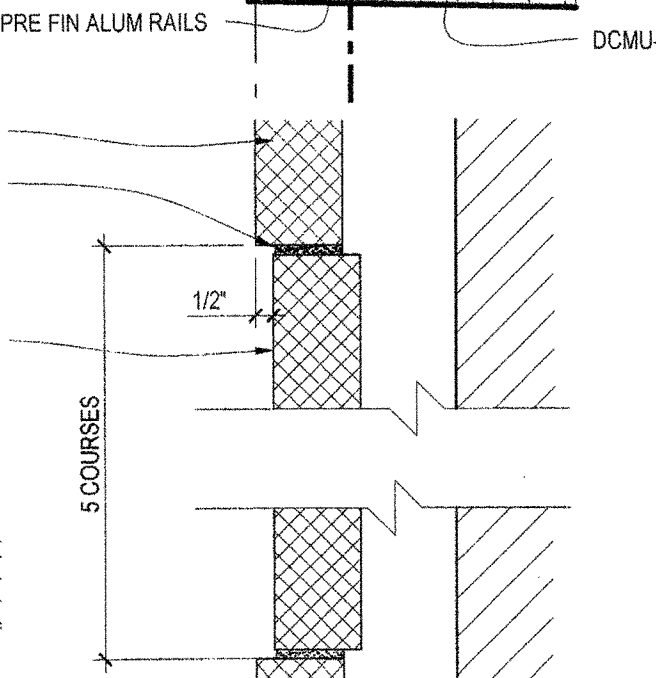
**6 RECESSED DCMU-2 DETAIL**  
A2.01 SCALE: 1-1/2" = 1'-0"



**7 DCMU-1 PLAN DETAIL**  
A2.01 SCALE: 1-1/2" = 1'-0"



**8 DCMU-2 PLAN DETAIL**  
A2.01 SCALE: 1-1/2" = 1'-0"



**9 RECESSED DCMU-1 DETAIL**  
A2.01 SCALE: 1-1/2" = 1'-0"