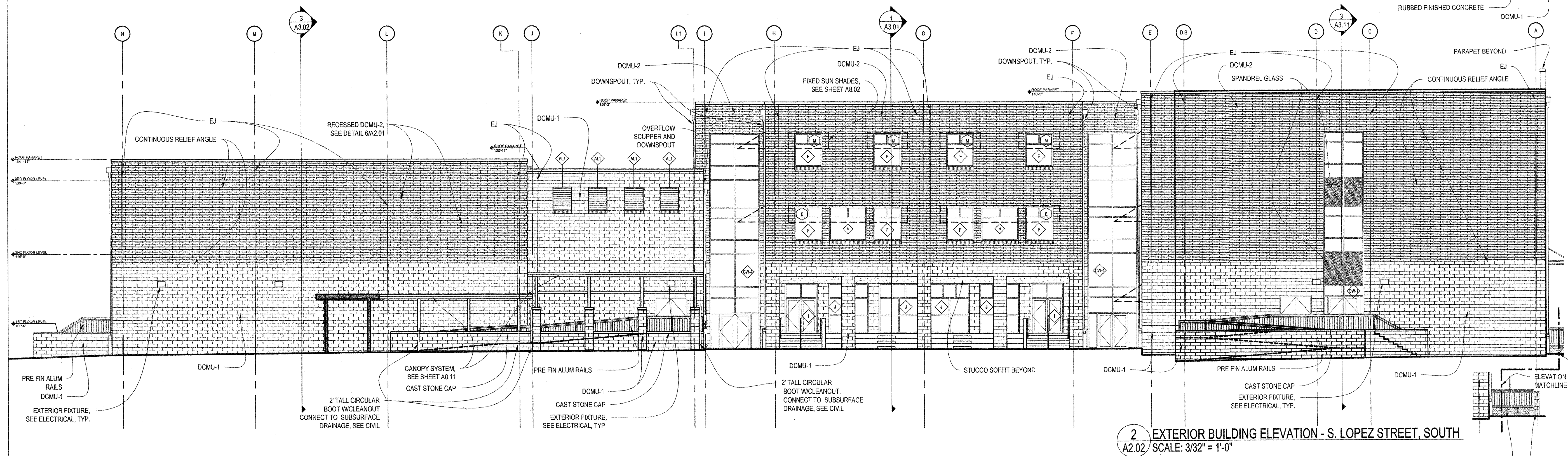
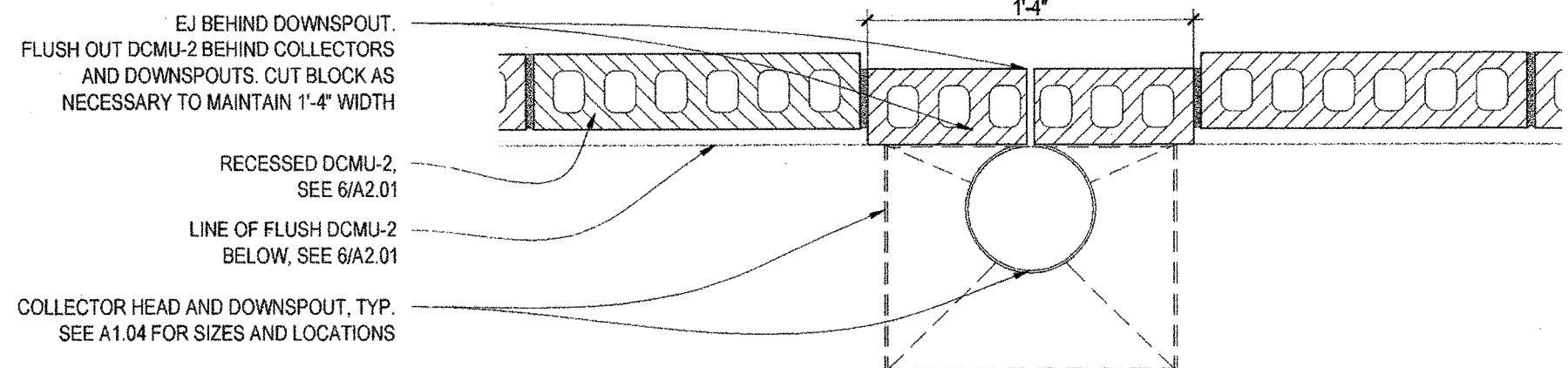


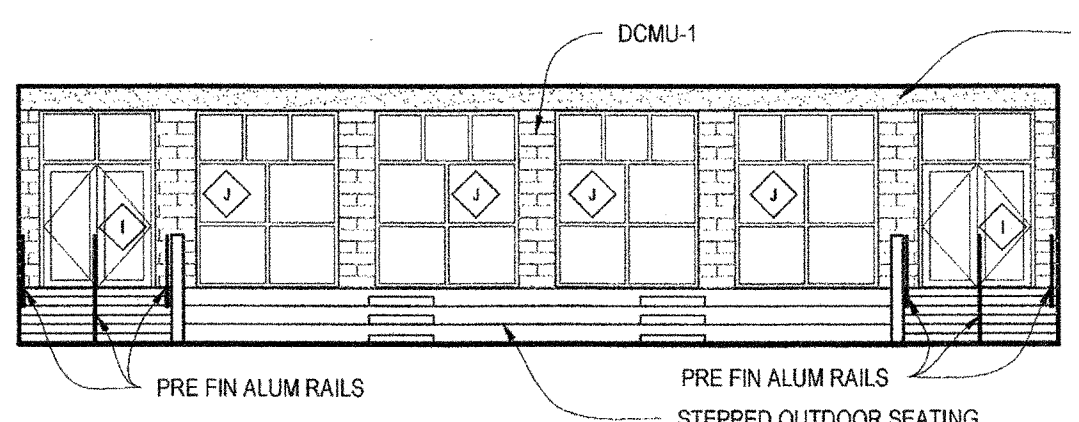
1 EXTERIOR BUILDING ELEVATION - PALMYRA STREET, EAST
A2.02 / SCALE: 3/32" = 1'-0"



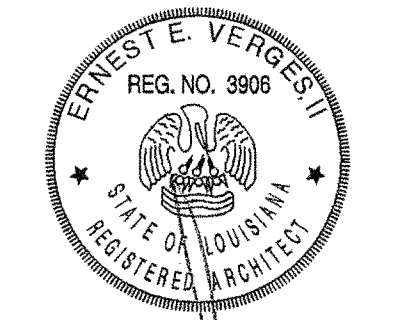
2 EXTERIOR BUILDING ELEVATION - S. LOPEZ STREET, SOUTH
A2.02 / SCALE: 3/32" = 1'-0"



4 DCMU-2 DETAIL AT GYM BEHIND DOWNSPOUTS, TYP.
A2.02 / SCALE: 1-1/2" = 1'-0"



3 PARTIAL EXTERIOR BUILDING ELEVATION - S. LOPEZ STREET, SOUTH
A2.02 / SCALE: 3/32" = 1'-0"



**NEW 3 SECTION ELEMENTARY SCHOOL
AT FISK-HOWARD SCHOOL
RECOVERY SCHOOL DISTRICT**

211 S. LOPEZ STREET NEW ORLEANS, LOUISIANA 70119

DATE ISSUED:	7 DECEMBER, 2012
REVISED:	
REVISED:	
REVISED:	
REVISED:	
REVISED:	
DRAWN BY:	MSR, CMB
CHECKED BY:	DGR, JFM
PHASE:	

BID DOCUMENTS

11085

TITLE:
EXTERIOR BUILDING ELEVATIONS

SHEET:

A2.02