

**NEW 3 SECTION ELEMENTARY SCHOOL
AT FISK-HOWARD SCHOOL
RECOVERY SCHOOL DISTRICT**
 NEW ORLEANS, LOUISIANA 70119
 211 S. LOPEZ STREET

DATE ISSUED: 7 DECEMBER, 2012
 REVISED:
 REVISED:
 REVISED:
 DRAWN BY: MSR, CMB
 CHECKED BY: DGR, JFM
 PHASE:

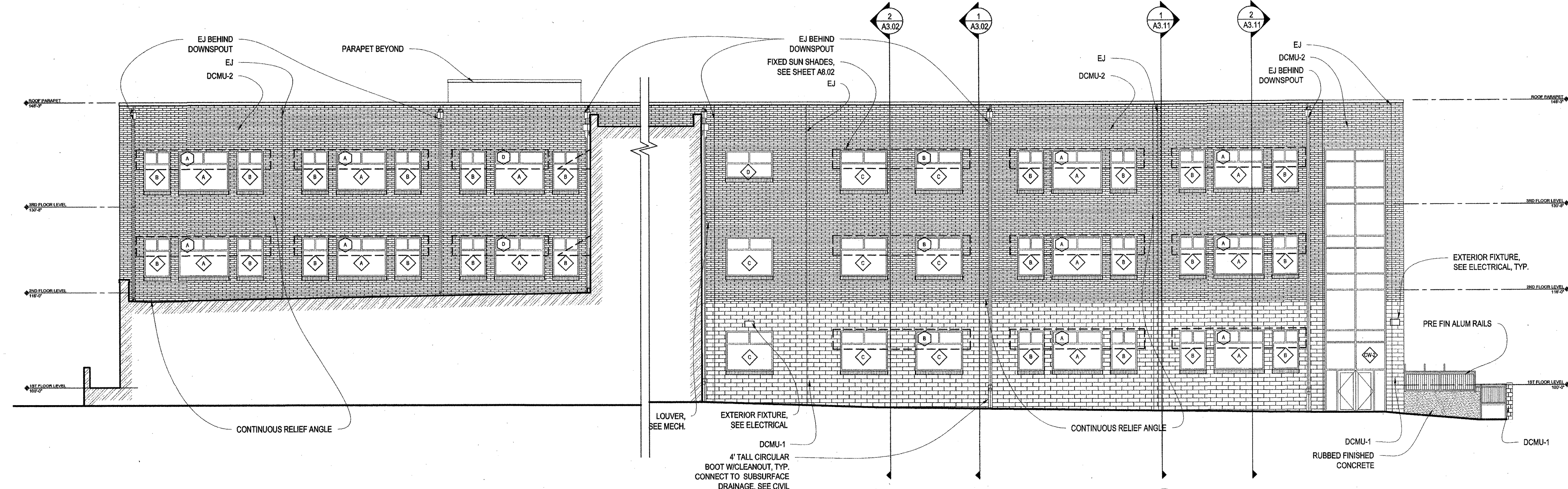
BID
DOCUMENTS

11085

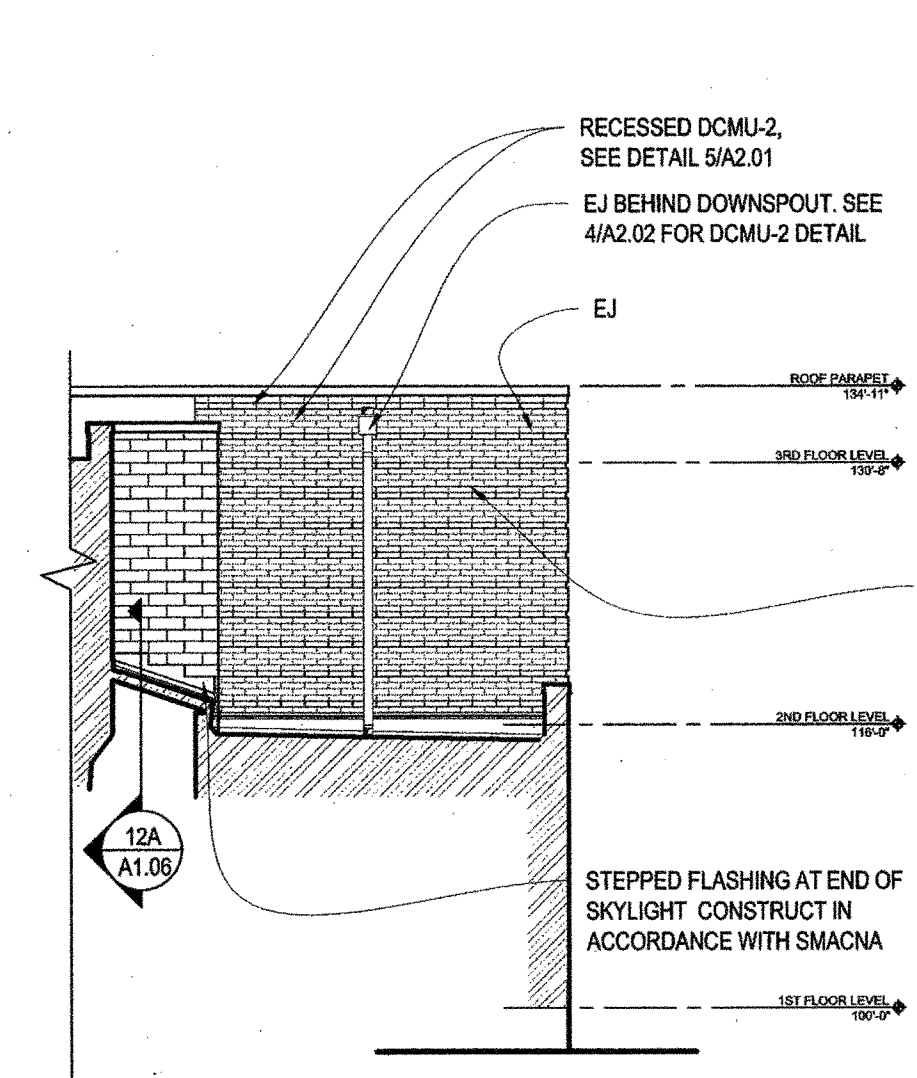
TITLE:
PARTIAL EXTERIOR
BUILDING ELEVATIONS

SHEET:

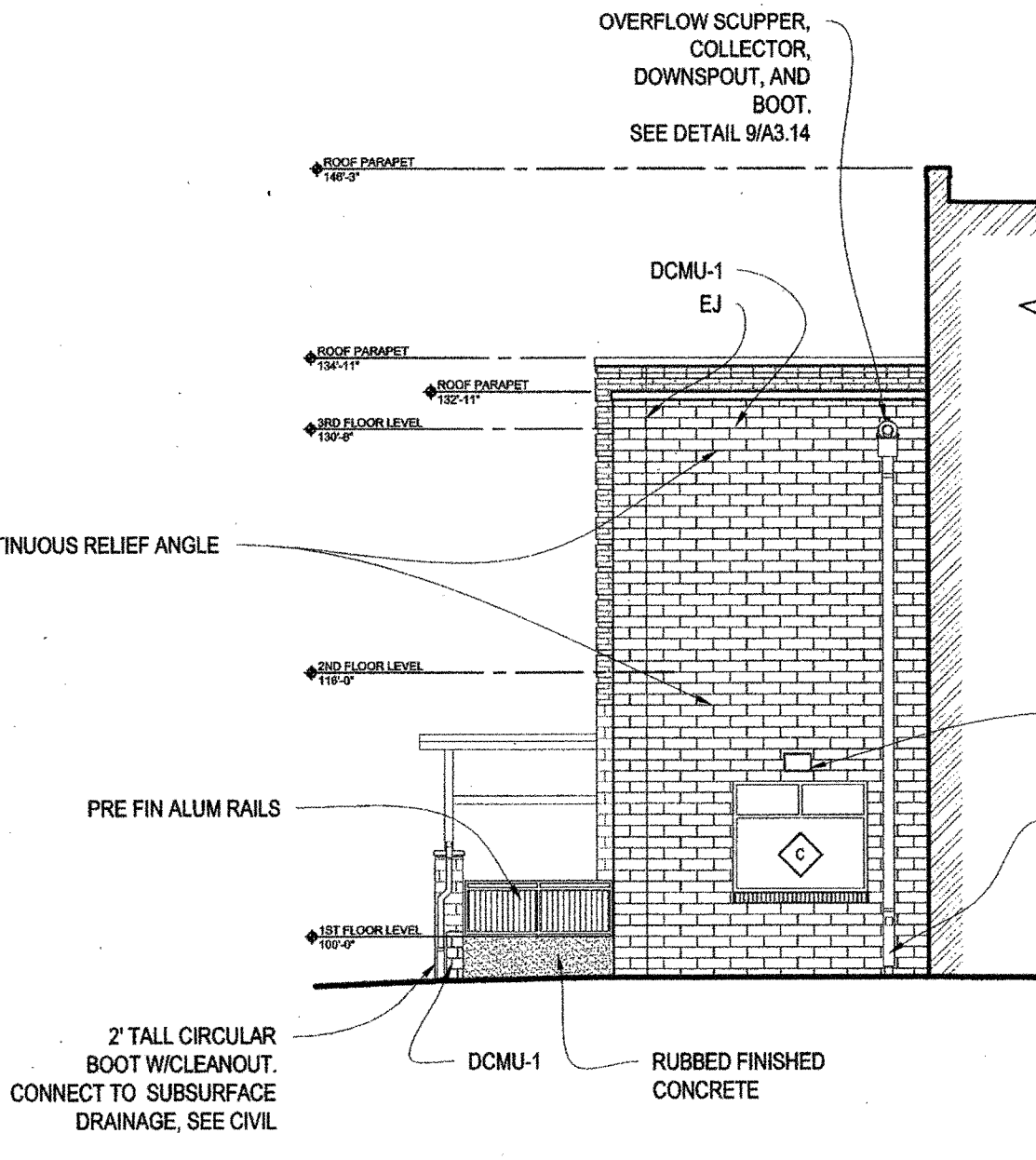
A2.03



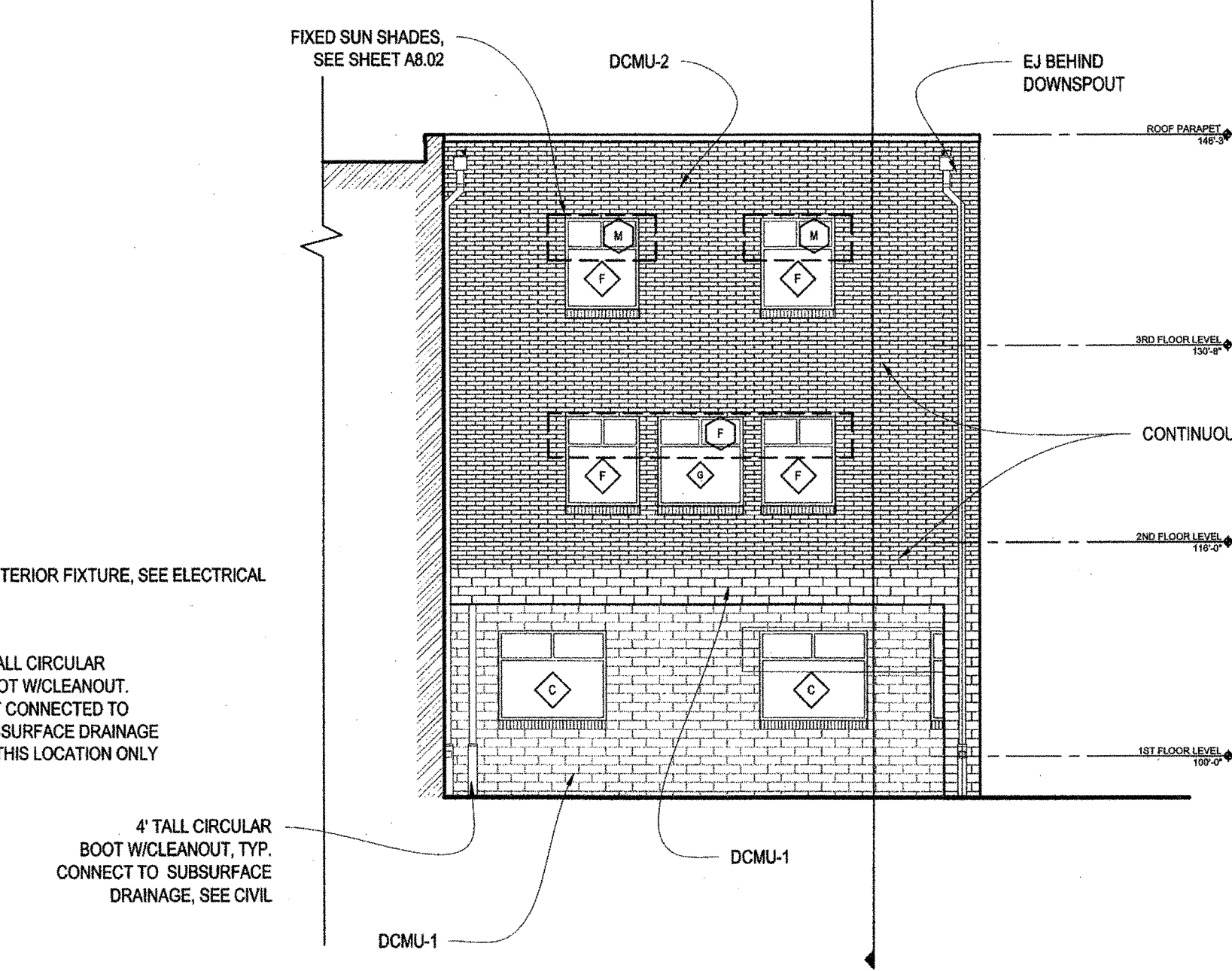
1 PARTIAL BUILDING ELEVATION - PALMYRA STREET, SOUTH
A2.03 SCALE: 3/32" = 1'-0"



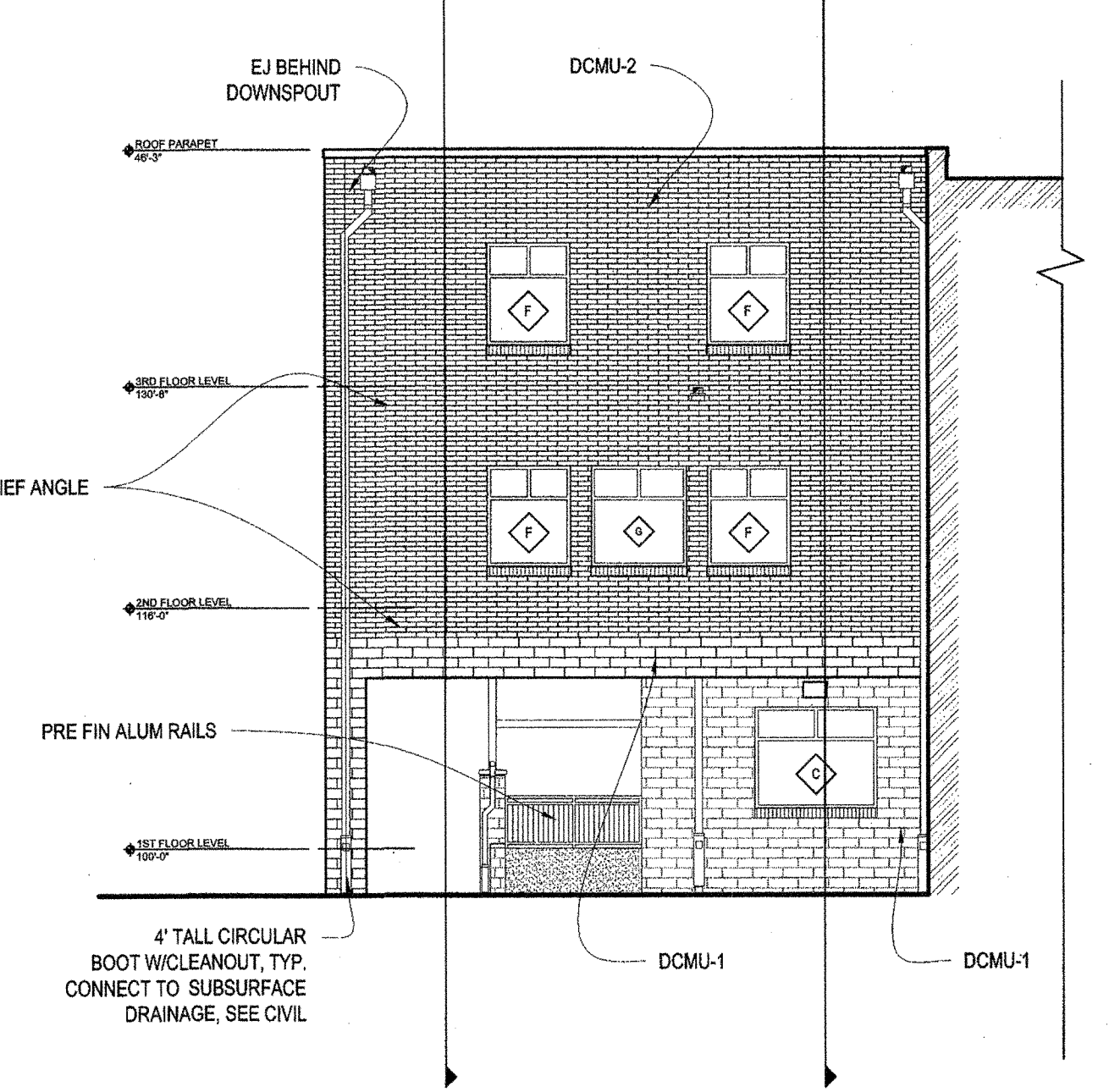
5 PARTIAL BUILDING ELEVATION - NORTH
A2.03 SCALE: 3/32" = 1'-0"



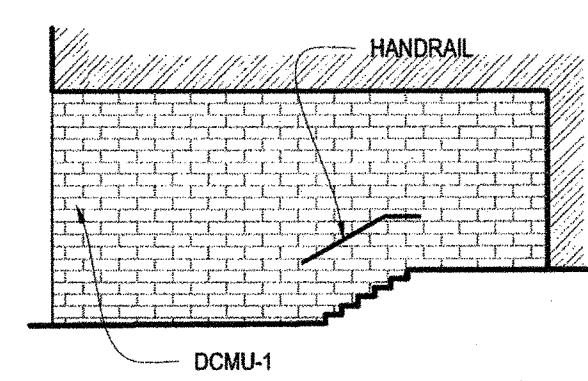
4 PARTIAL BUILDING ELEVATION - NORTH
A2.03 SCALE: 3/32" = 1'-0"



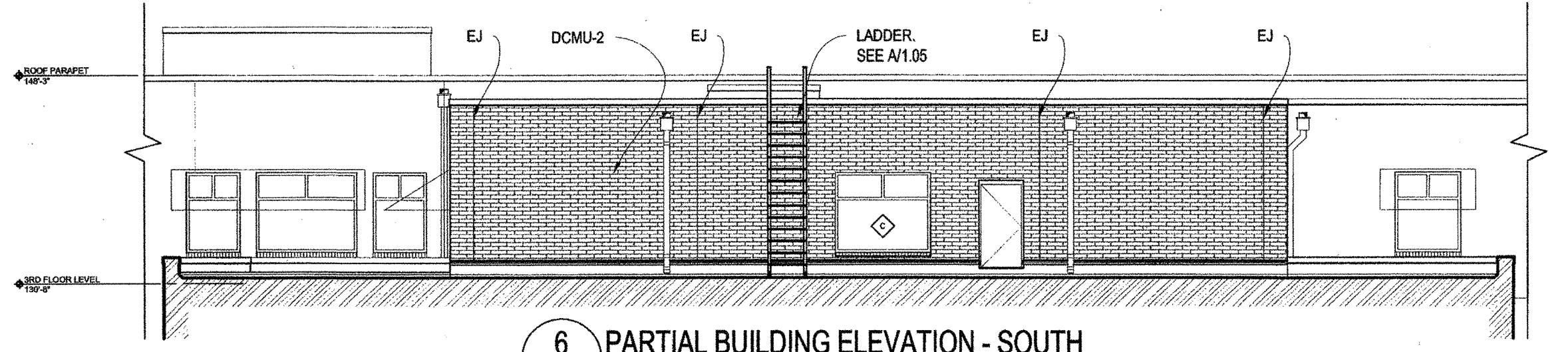
3 PARTIAL BUILDING ELEVATION - SOUTH
A2.03 SCALE: 3/32" = 1'-0"



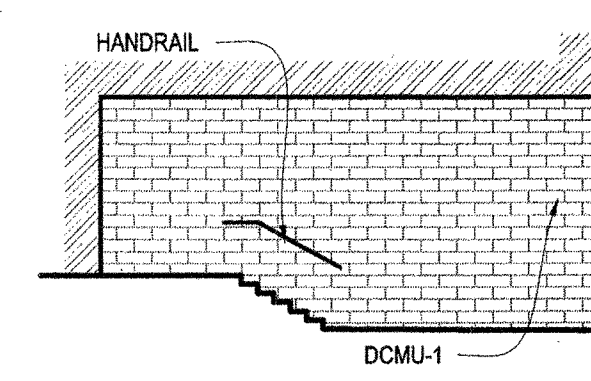
2 PARTIAL BUILDING ELEVATION - NORTH
A2.03 SCALE: 3/32" = 1'-0"



7 PARTIAL BUILDING ELEVATION - NORTH
A2.03 SCALE: 3/32" = 1'-0"



6 PARTIAL BUILDING ELEVATION - SOUTH
A2.03 SCALE: 3/32" = 1'-0"



8 PARTIAL BUILDING ELEVATION - NORTH
A2.03 SCALE: 3/32" = 1'-0"