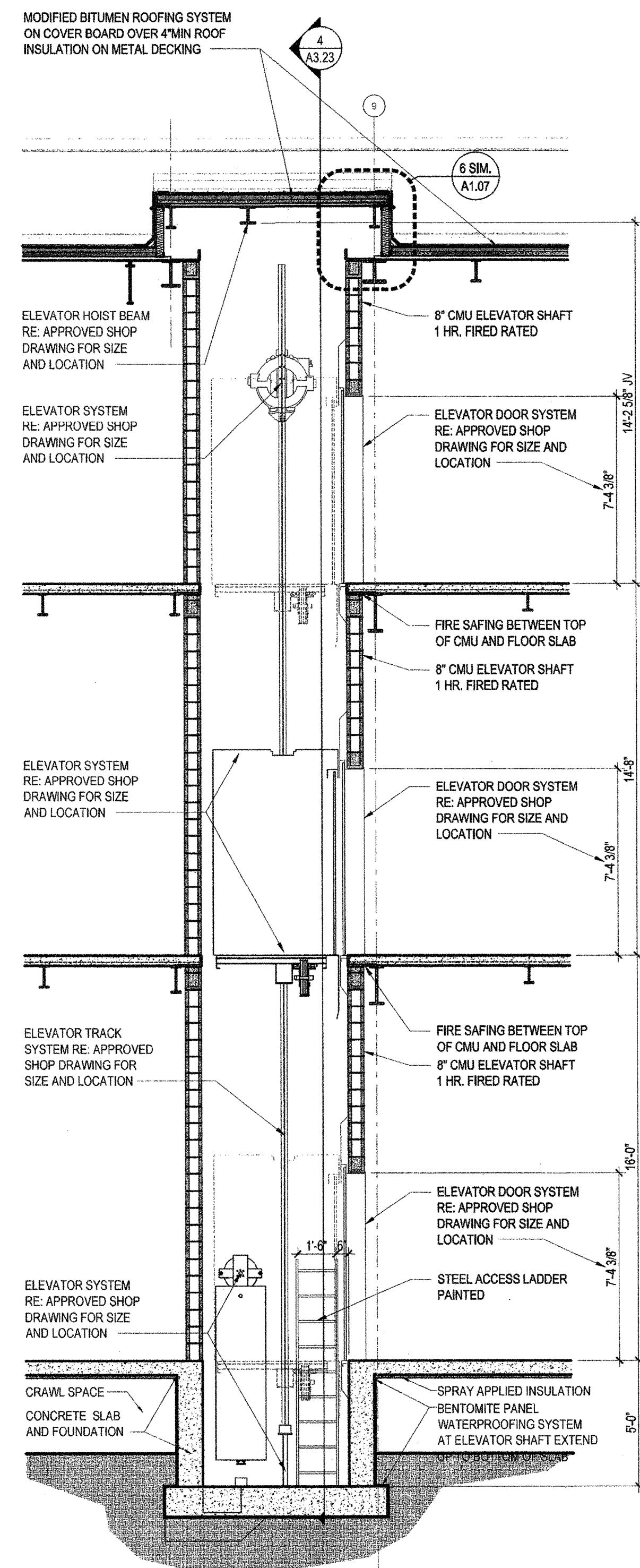


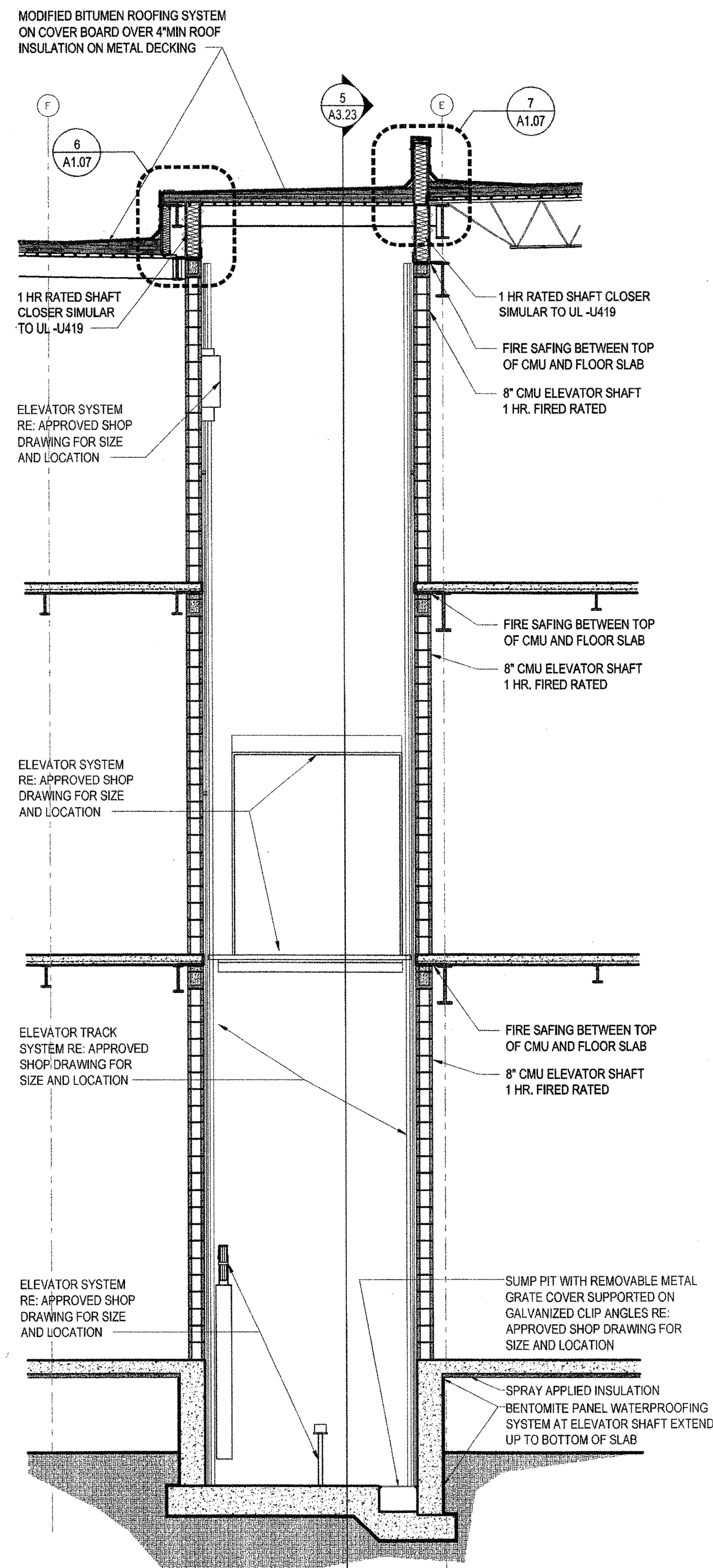


**NEW 3 SECTION ELEMENTARY SCHOOL
AT FISK-HOWARD SCHOOL
RECOVERY SCHOOL DISTRICT**

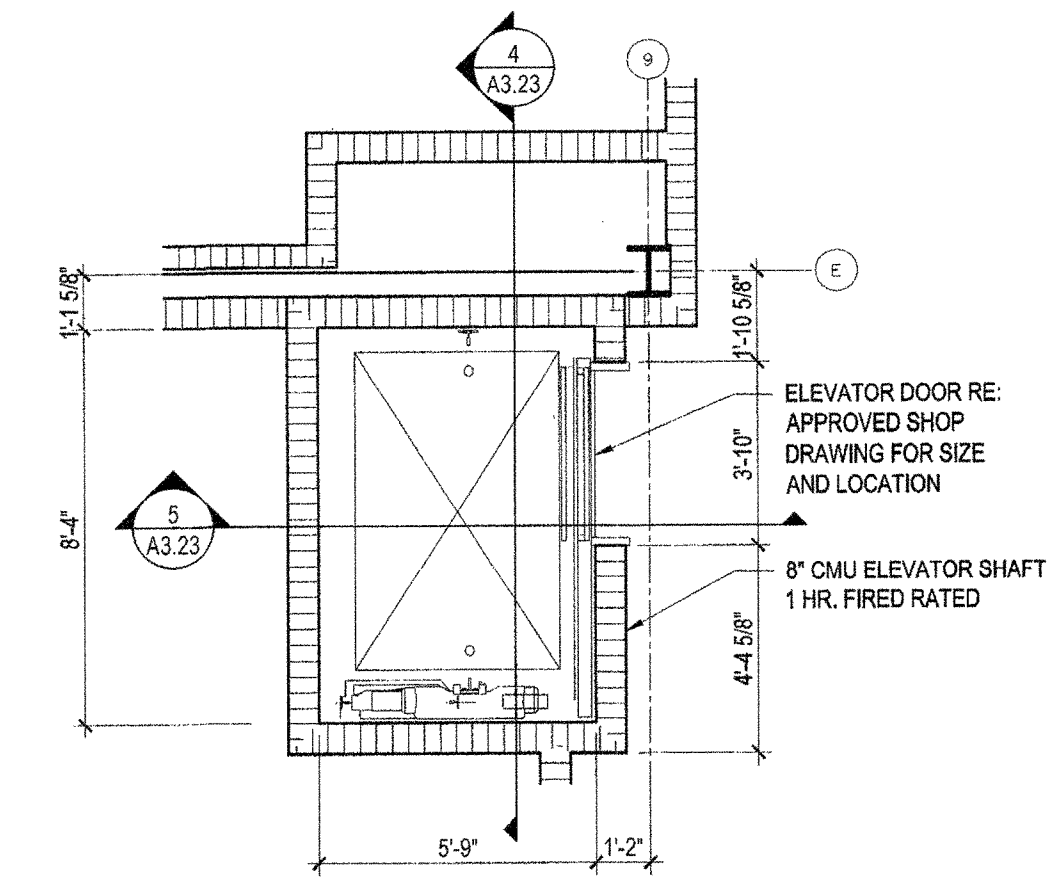
211 S. LOPEZ STREET NEW ORLEANS, LOUISIANA 70119



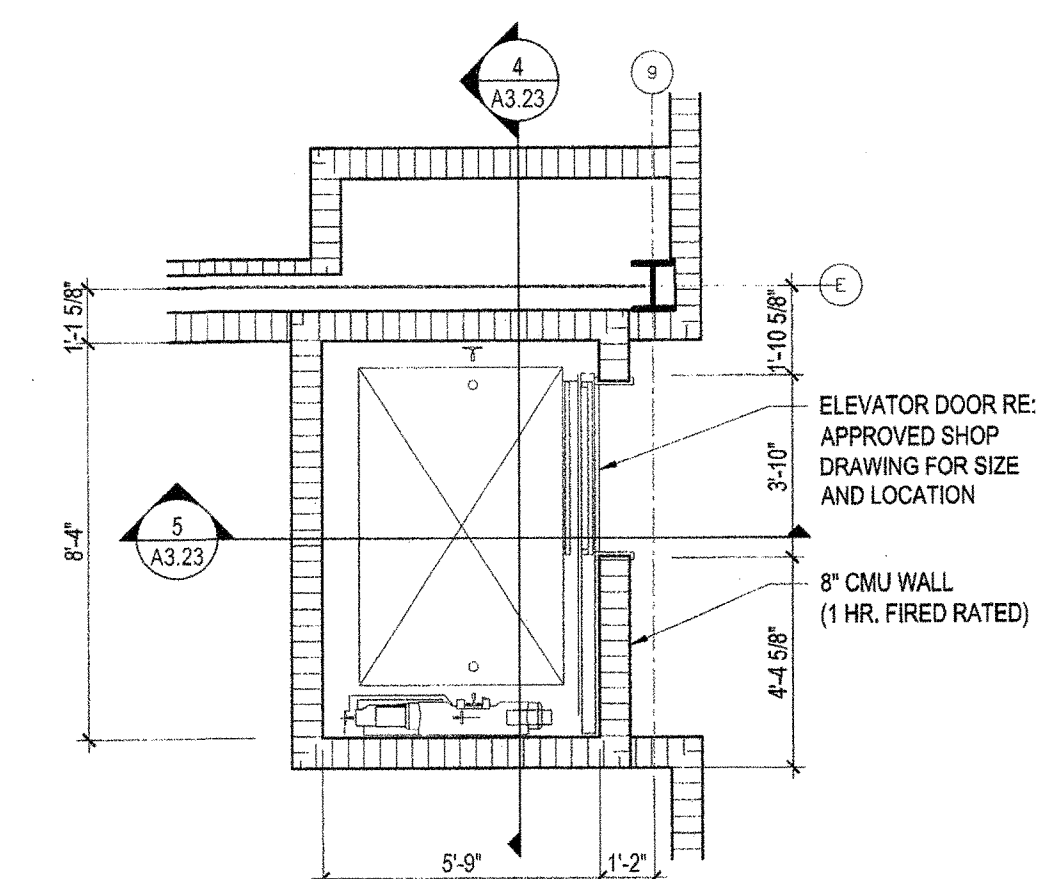
5 WALL SECTION (ELEVATOR)
A3.23 SCALE: 1/4" = 1'-0"



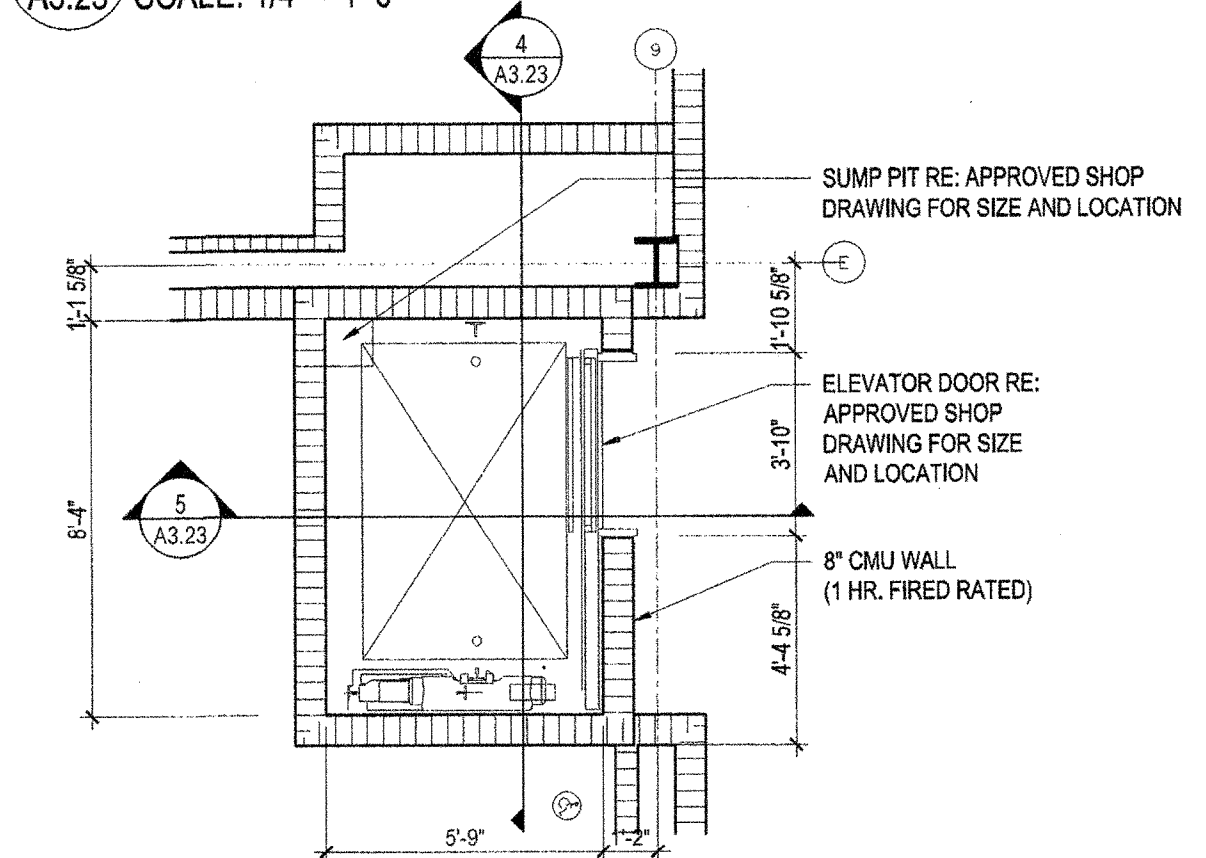
4 WALL SECTION (ELEVATOR)
A3.23 SCALE: 1/4" = 1'-0"



3 UNIT C THIRD FLOOR - ELEVATOR
A3.23 SCALE: 1/4" = 1'-0"



2 UNIT C SECOND FLOOR - ELEVATOR
A3.23 SCALE: 1/4" = 1'-0"



1 UNIT C FIRST FLOOR - ELEVATOR
A3.23 SCALE: 1/4" = 1'-0"

DATE ISSUED:	7 DECEMBER, 2012
REVISED:	
REVISED:	
REVISED:	
REVISED:	
DRAWN BY:	RPB
CHECKED BY:	DGR, JFM
PHASE:	

BID DOCUMENTS

11085

TITLE:
ELEVATOR SECTIONS
& PLANS - UNIT C

SHEET:

A3.23