

**NEW 3 SECTION ELEMENTARY SCHOOL  
AT FISK-HOWARD SCHOOL  
RECOVERY SCHOOL DISTRICT**  
NEW ORLEANS, LOUISIANA 70119  
211 SLOPEZ STREET

DATE ISSUED: 7 DECEMBER, 2012  
REVISED:  
REVISED:  
REVISED:  
REVISED:  
DRAWN BY: MKS  
CHECKED BY:  
PHASE:

**BID DOCUMENTS**

**11085**

TITLE:  
**UNIT B SECOND FLOOR  
REFLECTED CEILING**

SHEET:

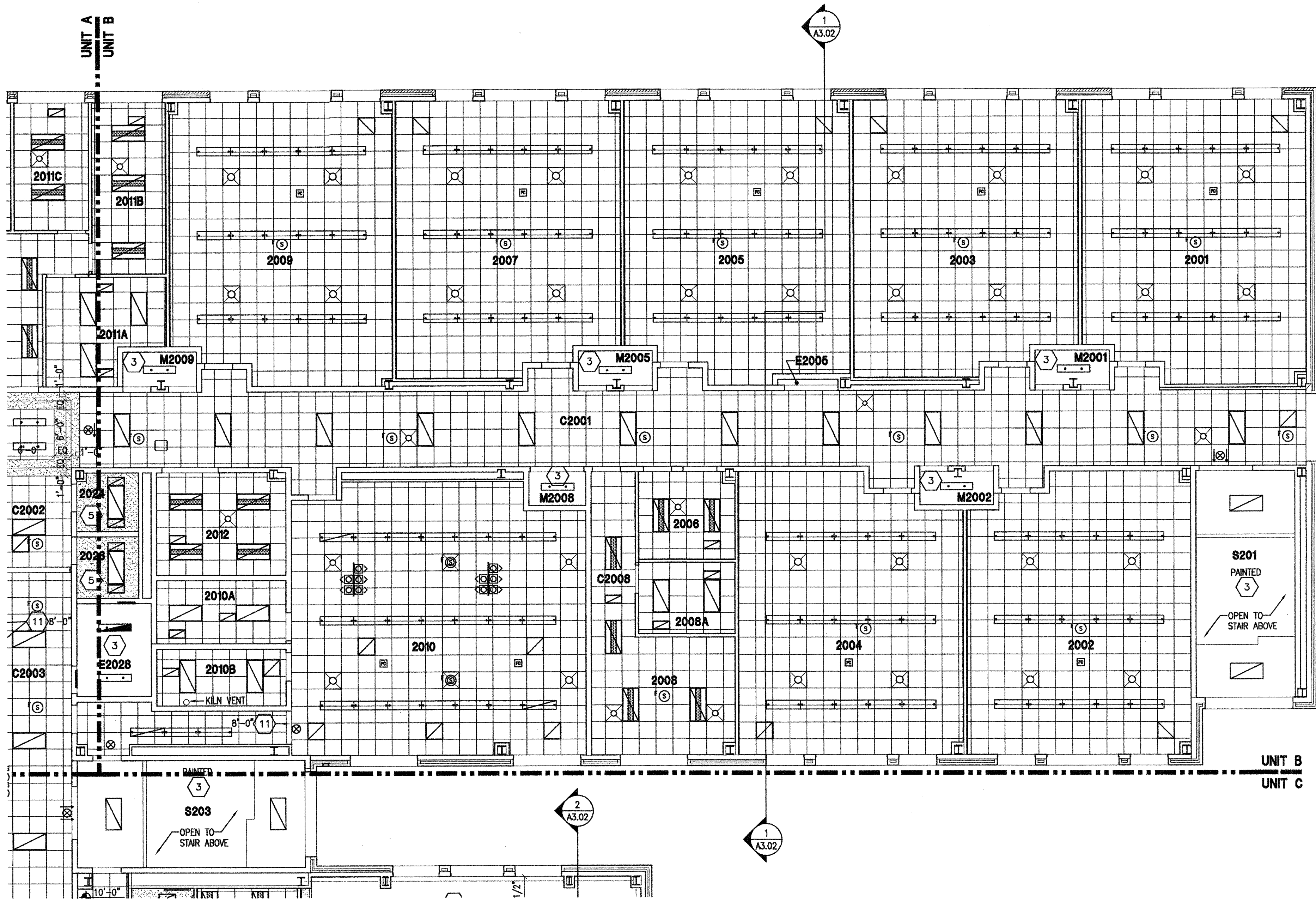
**A7.06**

ROOM LEGEND		UNIT B 2ND FLOOR	
ROOM NO.	ROOM NAME	AREA	CLNG HT
2001	GRADE 2 CLASSROOM	856 SF	10'-0"
2002	GRADE 2 CLASSROOM	854 SF	10'-0"
2003	GRADE 2 CLASSROOM	836 SF	10'-0"
2004	EXPLORATION	849 SF	10'-0"
2005	GRADE 3 CLASSROOM	849 SF	10'-0"
2006	OFFICE A	118 SF	10'-0"
2007	GRADE 3 CLASSROOM	839 SF	10'-0"
2008	TEACHER CENTER	234 SF	10'-0"
2008A	STORAGE	97 SF	10'-0"
2009	GRADE 3 CLASSROOM	851 SF	10'-0"
2010	ART	1248 SF	10'-0"
2010A	STORAGE	116 SF	10'-0"
2010B	KILN	102 SF	10'-0"
2011A	RECORDS	156 SF	10'-0"
2011B	OFFICE B	178 SF	10'-0"
2012	SPEECH	187 SF	10'-0"
2024	MEN	50 SF	10'-0"
2026	WOMEN	54 SF	10'-0"
C2001	CORRIDOR	1433 SF	10'-0"
C2008	CORRIDOR	104 SF	10'-0"
E2005	ELECTRICAL	5 SF	EXPOSED
E2028	ELECTRICAL	97 SF	EXPOSED
M2001	MECHANICAL	35 SF	EXPOSED
M2002	MECHANICAL	35 SF	EXPOSED
M2005	MECHANICAL	35 SF	EXPOSED
M2008	MECHANICAL	27 SF	EXPOSED
M2009	MECHANICAL	35 SF	EXPOSED
S201	STAIR	318 SF	VARIES

- GENERAL NOTES**
- THE ARCHITECTURAL REFLECTED CEILING PLANS GOVERN THE LAYOUT OF ALL CEILING ELEMENTS/PENETRATIONS.
  - REFER TO MASTER PLANS/CODE PLANS FOR THE LOCATION OF RATED WALL CONSTRUCTION AND WALLS THAT EXTEND TO ROOF DECK OR FLOOR STRUCTURE ABOVE.
  - REFER TO ROOM FINISH SCHEDULE FOR SPECIFIC CEILING TYPES.
  - BULKHEAD FRAMING SHALL BE ATTACHED TO STRUCTURAL FRAMING AND NOT TO ROOF DECK. PROVIDE REVEAL DRYWALL TRIM AT ALL LOCATIONS WHERE GYPSUM WALL BOARD (GWB) ABUTS A DISSIMILAR MATERIAL. TYPICAL UNLESS NOTED OTHERWISE. REFER TO DETAIL 1-A7.12.

- REFLECTED CEILING PLAN LEGEND**
- 2x4 OR 2x2 ACOUSTICAL CEILING - REFER TO ROOM FINISH SCHEDULE FOR TYPE
  - LIGHT FIXTURE - REFER TO ELECTRICAL DRAWINGS
  - LIGHT FIXTURE - REFER TO ELECTRICAL DRAWINGS
  - LIGHT FIXTURE - REFER TO ELECTRICAL DRAWINGS
  - DIFFUSER - REFER TO MECHANICAL DRAWINGS
  - DIFFUSER - REFER TO MECHANICAL DRAWINGS
  - RETURN AIR GRILL - REFER TO MECHANICAL DRAWINGS
  - SPEAKER - REFER TO ELECTRICAL DRAWINGS
  - OCCUPANCY SENSOR - REFER TO ELECTRICAL DRAWINGS
  - SMOKE DETECTOR - REFER TO ELECTRICAL DRAWINGS
  - HEAT DETECTOR - REFER TO ELECTRICAL DRAWINGS
  - CEILING MOUNTED EXIT LIGHT
  - CEILING MOUNTED PROJECTOR - COORDINATE INSTALLATION OF VIDEO PROJECTOR WITH TECHNOLOGY CONTRACTOR
  - CEILING MOUNTED WIRELESS ACCESS POINT
  - CEILING MOUNTED INTERCOMMUNICATIONS LOUDSPEAKER
  - CEILING MOUNTED SPECIALTY SOUND REINFORCEMENT SPEAKER
  - CEILING MOUNTED MICROPHONE
  - CEILING MOUNTED VIDEO SURVEILLANCE CAMERA
  - CEILING MOUNTED MOTION DETECTOR
  - CEILING MOUNTED DOOR ACCESS CONTROLLER JUNCTION BOX
  - CABINET HEATER - REFER TO MECHANICAL DRAWINGS
  - INDICATES GWB BULKHEAD/CEILING
  - INDICATES PLASTER CEILING/SOFFIT
  - INDICATES PROJECTION SCREEN - REFER TO EQUIPMENT DRAWINGS
  - 2" SOFFIT VENT (CONT). TERMINATE 8" FROM FACE OF WALL CONSTRUCTION

- REFLECTED PLAN KEY NOTES**
- REFER TO SECOND FLOOR FOR CEILING.
  - SLOPED GLAZING SKYLIGHT - REFER TO ROOF PLAN AND WALL SECTIONS.
  - EXPOSED STRUCTURE IN THIS ROOM.
  - NO NEW CEILING FINISH REQUIRED AT FREEZER/COOLER AREA.
  - 5/8" GWB CEILING ON 3 5/8" STEEL STUDS AT 16" O.C. SUSPEND FROM STRUCTURE AS REQUIRED.
  - LINE INDICATES CANOPY AND STRUCTURE REFER TO SITE PLAN CANOPY DRAWINGS. TUBULAR DAYLIGHTING DIFFUSER - REFER TO ROOF PLAN AND PROJECT MANUAL.
  - SUSPENDED PLASTER SOFFIT - 3/4" PORTLAND CEMENT STUCCO ON METAL LATH ON RUNNERS SUSPENDED FROM STRUCTURE ABOVE. HEIGHT AS INDICATED.
  - CONTROL JOINT AT SUSPENDED PLASTER SOFFIT REFER TO PROJECT MANUAL.
  - CONTINUOUS EXPANSION JOINT AT CEILING - SEE DETAIL 2-A7.13.
  - CHAU LINTEL (PAINT) BOTTOM OF LINTEL HEIGHT AS INDICATED - REFER TO STRUCTURAL DRAWINGS.
  - LUMINOUS CEILING SYSTEM AND GWB BULKHEAD REFER TO PROJECT MANUAL AND DETAIL 10-A7.12.
  - ACRYLIC EGGRATE CEILING AT DISPLAY CASE REFER TO DETAIL 7-A7.64.
  - GWB BULKHEAD - REFER TO DETAIL 2-A7.12.
  - GWB BULKHEAD - REFER TO DETAIL 3-A7.12.
  - GWB BULKHEAD - REFER TO DETAIL 4-A7.12.
  - GWB BULKHEAD - REFER TO DETAIL 5-A7.12.
  - GWB BULKHEAD - REFER TO DETAIL 6-A7.12.
  - GWB BULKHEAD - REFER TO DETAIL 7-A7.12.
  - GWB BULKHEAD - REFER TO DETAIL 8-A7.12.
  - GWB BULKHEAD - REFER TO DETAIL 9-A7.12.
  - GWB BULKHEAD - REFER TO DETAIL 11-A7.12.
  - GWB BULKHEAD - REFER TO DETAIL 12-A7.12.
  - GWB BULKHEAD - REFER TO DETAIL 13-A7.12.
  - FORWARD FOLDING BASKETBALL BACKSTOP REFER TO EQUIPMENT DRAWINGS.
  - GYMNASIUM DIVIDER CURTAIN - REFER TO EQUIPMENT DRAWINGS.
  - OPERABLE PARTITION WALL - REFER TO PROJECT MANUAL AND DETAIL 1-A7.13.
  - SUSPENDED ACOUSTICAL CEILING. HEIGHT AS INDICATED - PROVIDE 8" SUSPENSION (PERIMETER) TRIM AROUND EACH SUSPENDED GROUPING OF PANELS. PROVIDE 6" ACOUSTICAL INSULATION LAYING ON TOP OF PANELS AND EXTENDING TO PERIMETER TRIM.
  - COORDINATE CEILING TERMINATION WITH COOLER/FREEZER CONTR.
  - GWB BULKHEAD - REFER TO DETAIL 3-A7.13
  - PROVIDE 1 HOUR RATED CEILING IN THIS ROOM. (2) LAYERS OF 5/8" TYPE "X" GWB CEILING ON 6" STEEL STUDS AT 16" O.C. AND SECURED TO WALLS AS REQUIRED.



**1 UNIT B - SECOND FLOOR REFLECTED CEILING PLAN**  
A7.06 SCALE: 1/8" = 1'-0"

**VERIFICATION NOTE**  
CONTRACTOR SHALL VERIFY ALL DIMENSIONS AND CLEARANCES AND ALL EXISTING FIELD CONDITIONS BEFORE STARTING CONSTRUCTION. COMMENCEMENT OF WORK CONSTITUTES ACCEPTANCE OF CONDITIONS.  
SHOULD DIFFERENT CONDITIONS BE ENCOUNTERED, CONTACT THE ARCHITECT BEFORE PROCEEDING WITH WORK.