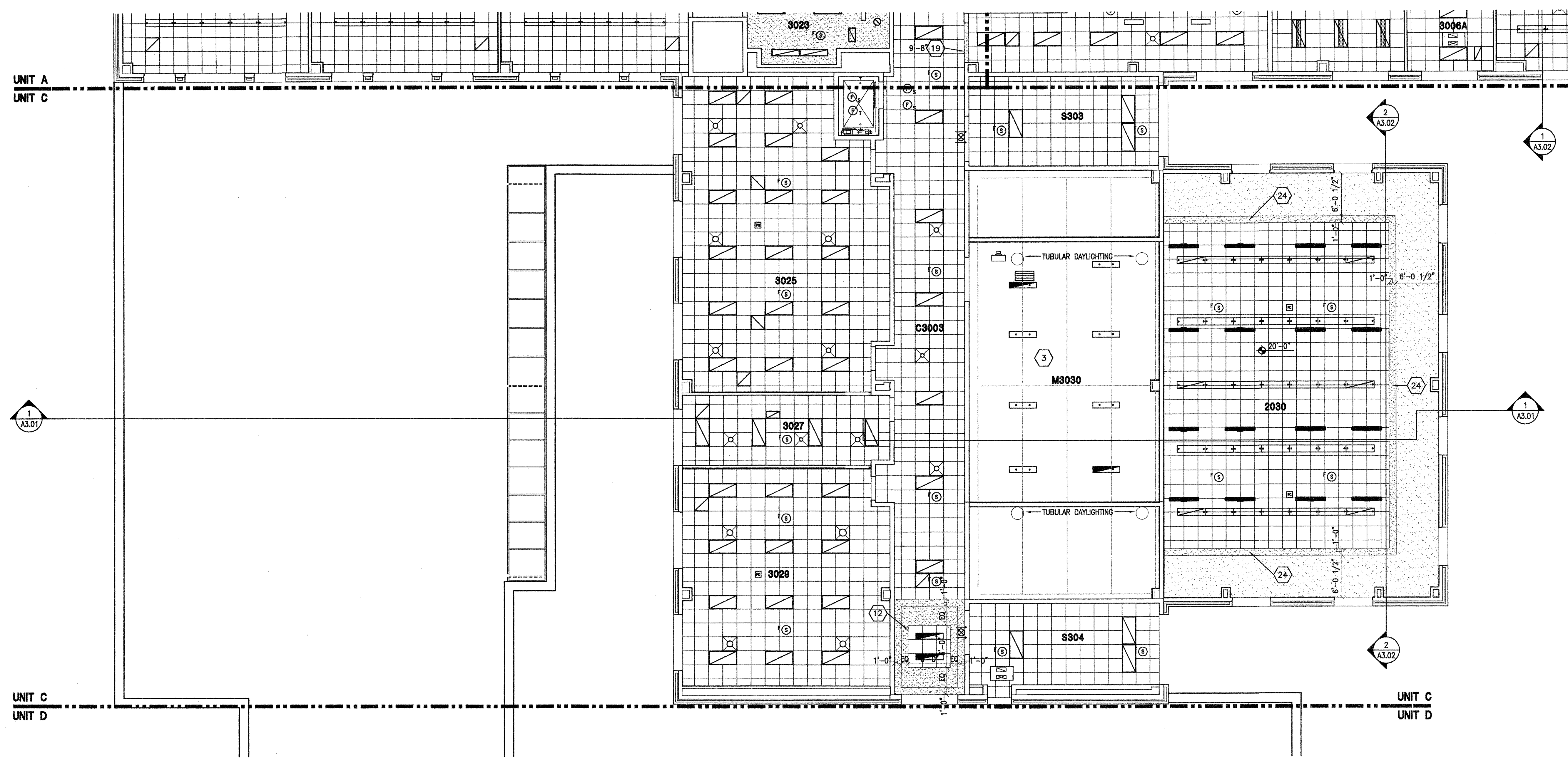


**NEW 3 SECTION ELEMENTARY SCHOOL  
AT FISK-HOWARD SCHOOL  
RECOVERY SCHOOL DISTRICT**

211 S. LOPEZ STREET NEW ORLEANS, LOUISIANA 70119



**REFLECTED CEILING PLAN LEGEND**

- 2x4 OR 2x2 ACOUSTICAL CEILING - REFER TO ROOM FINISH SCHEDULE FOR TYPE
- LIGHT FIXTURE - REFER TO ELECTRICAL DRAWINGS
- LIGHT FIXTURE - REFER TO ELECTRICAL DRAWINGS
- LIGHT FIXTURE - REFER TO ELECTRICAL DRAWINGS
- DIFFUSER - REFER TO MECHANICAL DRAWINGS
- DIFFUSER - REFER TO MECHANICAL DRAWINGS
- RETURN AIR GRILL - REFER TO MECHANICAL DRAWINGS
- SPEAKER - REFER TO ELECTRICAL DRAWINGS
- OCCUPANCY SENSOR - REFER TO ELECTRICAL DRAWINGS
- SMOKE DETECTOR - REFER TO ELECTRICAL DRAWINGS
- HEAT DETECTOR - REFER TO ELECTRICAL DRAWINGS
- CEILING MOUNTED EXIT LIGHT
- CEILING MOUNTED PROJECTOR - COORDINATE INSTALLATION OF VIDEO PROJECTOR WITH TECHNOLOGY CONTRACTOR
- CEILING MOUNTED WIRELESS ACCESS POINT
- CEILING MOUNTED INTERCOMMUNICATIONS LOUDSPEAKER
- CEILING MOUNTED SPECIALTY SOUND REINFORCEMENT SPEAKER
- CEILING MOUNTED MICROPHONE
- CEILING MOUNTED VIDEO SURVEILLANCE CAMERA
- CEILING MOUNTED MOTION DETECTOR
- CEILING MOUNTED DOOR ACCESS CONTROLLER JUNCTION BOX
- CABINET HEATER - REFER TO MECHANICAL DRAWINGS
- INDICATES GWB BULKHEAD/CEILING
- INDICATES PLASTER CEILING/SOFFIT
- INDICATES PROJECTION SCREEN - REFER TO EQUIPMENT DRAWINGS
- 2" SOFFIT VENT (CONT). TERMINATE 8" FROM FACE OF WALL CONSTRUCTION

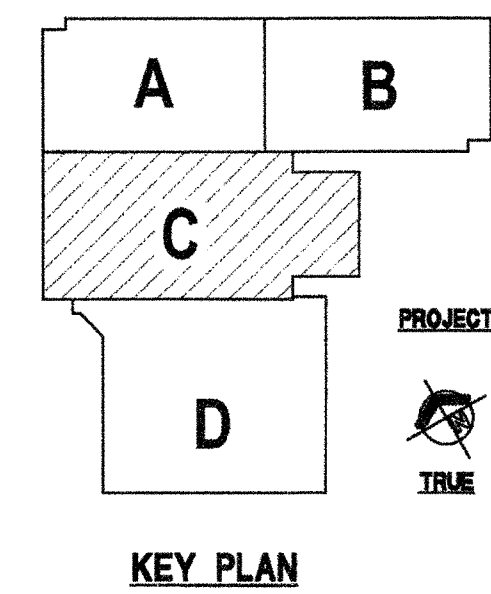
**GENERAL NOTES**

- A. THE ARCHITECTURAL REFLECTED CEILING PLANS GOVERN THE LAYOUT OF ALL CEILING ELEMENTS/PENETRATIONS.
- B. REFER TO MASTER PLANS/CODE PLANS FOR THE LOCATION OF RATED WALL CONSTRUCTION AND WALLS THAT EXTEND TO ROOF DECK OR FLOOR STRUCTURE ABOVE.
- C. REFER TO ROOM FINISH SCHEDULE FOR SPECIFIC CEILING TYPES.
- D. BULKHEAD FRAMING SHALL BE ATTACHED TO STRUCTURAL FRAMING AND NOT TO ROOF DECK. PROVIDE REVEAL DRYWALL TRIM AT ALL LOCATIONS WHERE GYPSUM WALL BOARD (GWB) ABUTS A DISSIMILAR MATERIAL TYPICAL UNLESS NOTED OTHERWISE. REFER TO DETAIL 1-A7.12.
- E.

**REFLECTED PLAN KEY NOTES**

1. REFER TO SECOND FLOOR FOR CEILING.
2. SLOPED GLAZING SKYLIGHT - REFER TO ROOF PLAN AND WALL SECTIONS.
3. EXPOSED STRUCTURE IN THIS ROOM.
4. NO NEW CEILING FINISH REQUIRED AT FREEZER/COOLER AREA.
5. 5/8" GWB CEILING ON 3 5/8" STEEL STUDS AT 16" O.C. SUSPEND FROM STRUCTURE AS REQUIRED.
6. LINE INDICATES CANOPY AND STRUCTURE REFER TO SITE PLAN CANOPY DRAWINGS.
7. TUBULAR DAYLIGHTING DIFFUSER - REFER TO ROOF PLAN AND PROJECT MANUAL.
8. SUSPENDED PLASTER SOFFIT - 3/4" PORTLAND CEMENT STUCCO ON METAL LATH ON RUNNERS SUSPENDED FROM STRUCTURE ABOVE. HEIGHT AS INDICATED.
9. CONTROL JOINT AT SUSPENDED PLASTER SOFFIT REFER TO PROJECT MANUAL.
10. CONTINUOUS EXPANSION JOINT AT CEILING - SEE DETAIL 2-A7.13.
11. CMU LINTEL (PAINT) BOTTOM OF LINTEL HEIGHT AS INDICATED - REFER TO STRUCTURAL DRAWINGS.
12. LUMINOUS CEILING SYSTEM AND GWB BULKHEAD REFER TO PROJECT MANUAL AND DETAIL 10-A7.12.
13. ACRYLIC EGGRATE CEILING AT DISPLAY CASE REFER TO DETAIL 7-A1.64.
14. GWB BULKHEAD - REFER TO DETAIL 2-A7.12.
15. GWB BULKHEAD - REFER TO DETAIL 3-A7.12.
16. GWB BULKHEAD - REFER TO DETAIL 4-A7.12.
17. GWB BULKHEAD - REFER TO DETAIL 5-A7.12.
18. GWB BULKHEAD - REFER TO DETAIL 6-A7.12.
19. GWB BULKHEAD - REFER TO DETAIL 7-A7.12.
20. GWB BULKHEAD - REFER TO DETAIL 8-A7.12.
21. GWB BULKHEAD - REFER TO DETAIL 9-A7.12.
22. GWB BULKHEAD - REFER TO DETAIL 11-A7.12.
23. GWB BULKHEAD - REFER TO DETAIL 12-A7.12.
24. GWB BULKHEAD - REFER TO DETAIL 13-A7.12.
25. FORWARD FOLDING BASKETBALL BACKSTOP REFER TO EQUIPMENT DRAWINGS.
26. GYMNASIUM DIVIDER CURTAIN - REFER TO EQUIPMENT DRAWINGS.
27. OPERABLE PARTITION WALL - REFER TO PROJECT MANUAL AND DETAIL 1-A7.13.
28. SUSPENDED ACOUSTICAL CEILING. HEIGHT AS INDICATED - PROVIDE 8" SUSPENSION (PERIMETER) TRIM AROUND EACH SUSPENDED GROUPING OF PANELS. PROVIDE 6" ACOUSTICAL INSULATION LAYING ON TOP OF PANELS AND EXTENDING TO PERIMETER TRIM.
29. COORDINATE CEILING TERMINATION WITH COOLER/FREEZER CONTR.
30. GWB BULKHEAD - REFER TO DETAIL 3-A7.13.
31. PROVIDE 1 HOUR RATED CEILING IN THIS ROOM. (2) LAYERS OF 5/8" TYPE "X" GWB CEILING ON 6" STEEL STUDS AT 16" O.C. AND SECURED TO WALLS AS REQUIRED.

ROOM LEGEND		UNIT C 3RD FLOOR	
ROOM NO.	ROOM NAME	AREA	CLNG HT
3025	SCIENCE LAB	1206 SF	10'-0"
3027	SCIENCE PREP	292 SF	10'-0"
3029	SCIENCE CLASSROOM	894 SF	10'-0"
C3003	CORRIDOR	933 SF	10'-0"
M3030	MECHANICAL	999 SF	EXPOSED
S303	STAIR	342 SF	10'-0"
S304	STAIR	315 SF	10'-0"



**1** UNIT C - THIRD FLOOR REFLECTED CEILING PLAN  
A7.11 SCALE: 1/8" = 1'-0"

DATE ISSUED: 7 DECEMBER, 2012  
REVISED:  
REVISED:  
REVISED:  
REVISED:  
DRAWN BY: MKS  
CHECKED BY:

PHASE: **BID DOCUMENTS**

**11085**  
TITLE: **UNIT C THIRD FLOOR REFLECTED CEILING**  
SHEET:

**A7.11**