



**NEW 3 SECTION ELEMENTARY SCHOOL
AT FISK-HOWARD SCHOOL
RECOVERY SCHOOL DISTRICT**

NEW ORLEANS, LOUISIANA 70119
211 S. LOPEZ STREET

DATE ISSUED: 7 DECEMBER, 2012

REVISED: _____
REVISED: _____

REVISED: _____
REVISED: _____

DRAWN BY: ELR, RPB, CMB

CHECKED BY: DGR, JFM

PHASE: _____

BID
DOCUMENTS

11085

TITLE:
2ND FLOOR
LIFE SAFETY PLAN

SHEET:

A0.05

STAIR	225 OCC. REQUIRED
	230 OCC. PROVIDED
	67 1/2' REQUIRED
	68' PROVIDED

DOOR OPENING	225 OCC. REQUIRED
	340 OCC. PROVIDED
	60 MIN. REQUIRED
	60 MIN. PROVIDED

DOOR OPENING	225 OCC. REQUIRED
	340 OCC. PROVIDED
	60 MIN. REQUIRED
	60 MIN. PROVIDED

STAIR	225 OCC. REQUIRED
	230 OCC. PROVIDED
	67 1/2' REQUIRED
	68' PROVIDED

DOOR OPENING	225 OCC. REQUIRED
	340 OCC. PROVIDED
	60 MIN. REQUIRED
	60 MIN. PROVIDED

STAIR	225 OCC. REQUIRED
	230 OCC. PROVIDED
	67 1/2' REQUIRED
	68' PROVIDED

DOOR OPENING	225 OCC. REQUIRED
	340 OCC. PROVIDED
	60 MIN. REQUIRED
	60 MIN. PROVIDED

STAIR	225 OCC. REQUIRED
	230 OCC. PROVIDED
	67 1/2' REQUIRED
	68' PROVIDED

OCCUPANT CALCULATION	1,284 SF / 20
	61 OCCUPANTS

OCCUPANT CALCULATION	1,228 SF / 20
	61 OCCUPANTS

OCCUPANT CALCULATION	94 SEATS + 17 STK + 11
	122 OCCUPANTS

CODE DATA:

PROJECT LOCATION:	FISK HOWARD SCHOOL 211 SOUTH LOPEZ STREET NEW ORLEANS, LOUISIANA 70119
OWNER:	RECOVERY SCHOOL DISTRICT NEW ORLEANS, LOUISIANA
NUMBER OF STORIES:	3 STORIES
BUILDING HEIGHT:	46' - 8" (1ST FL. SLAB TO TOP OF ROOF SLAB)
BUILDING SQUARE FOOTAGE (TOTAL):	110,434 SF.
BUILDING SQUARE FOOTAGE (FLOOR):	1ST FLOOR = 51,223 SF. 2ND FLOOR = 34,494 SF. 3RD FLOOR = 24,717 SF. TOTAL = 110,434 SF.

CODE ISSUE:	STATE OF LOUISIANA NFPA 101 2009	CITY OF NEW ORLEANS IBC 2009
BUILDING TYPE	TYPE II (0,0,0), SPRINKLED	TYPE II B, SPRINKLED (AREA MODIFICATION FORMULA USED (506), FRONTAGE & SPRINKLER)
MAIN OCCUPANCY	EDUCATION	EDUCATION "E"

OCCUPANCY TYPES AND OCCUPANT LOAD PER OCCUPANCY:					
FIRST FLOOR:	ASSEMBLY A2 NSF/7	653 OCC.	ASSEMBLY A2 NSF/7	653 OCC.	
	ASSEMBLY A4 NSF/7	1,376 OCC.	ASSEMBLY A4 NSF/7	1,376 OCC.	
	BUSINESS GSF/100	43 OCC.	BUSINESS GSF/100	43 OCC.	
	EDUCATION NSF/20	448 OCC.	EDUCATION NSF/20	448 OCC.	
	FAC. LOUNGE LAYOUT	20 OCC.	FAC. LOUNGE LAYOUT	20 OCC.	
	GYM CORE GSF/100	35 OCC.	GYM CORE GSF/100	35 OCC.	
	KITCHEN GSF/100	46 OCC.	KITCHEN GSF/100	46 OCC.	

FIRST FLOOR SUBTOTAL:	2,621 OCC.	2,621 OCC.
-----------------------	------------	------------

SECOND FLOOR:	ASSEMBLY A3 GSF/100	28 OCC.	ASSEMBLY A3 GSF/100	28 OCC.
	ASSEMBLY A3 LAYOUT	94 OCC.	ASSEMBLY A3 LAYOUT	94 OCC.
	BUSINESS GSF/100	21 OCC.	BUSINESS GSF/100	21 OCC.
	EDUCATION NSF/20	555 OCC.	EDUCATION NSF/20	555 OCC.
	EDUCATION NSD/50	64 OCC.	EDUCATION NSD/50	64 OCC.
	EDUCATION NSF/20	128 OCC.	EDUCATION NSF/20	128 OCC.
	MECHANICAL GSF/300	9 OCC.	MECHANICAL GSF/300	9 OCC.

SECOND FLOOR SUBTOTAL:	899 OCC.	899 OCC.
------------------------	----------	----------

THIRD FLOOR:	BUSINESS GSF/100	14 OCC.	BUSINESS GSF/100	14 OCC.
	EDUCATION NSF/20	652 OCC.	EDUCATION NSF/20	652 OCC.
	EDUCATION NSD/50	30 OCC.	EDUCATION NSD/50	30 OCC.
	LOCKER COM. GSF/50	19 OCC.	LOCKER COM. GSF/50	19 OCC.
	MECHANICAL GSF/300	4 OCC.	MECHANICAL GSF/300	4 OCC.

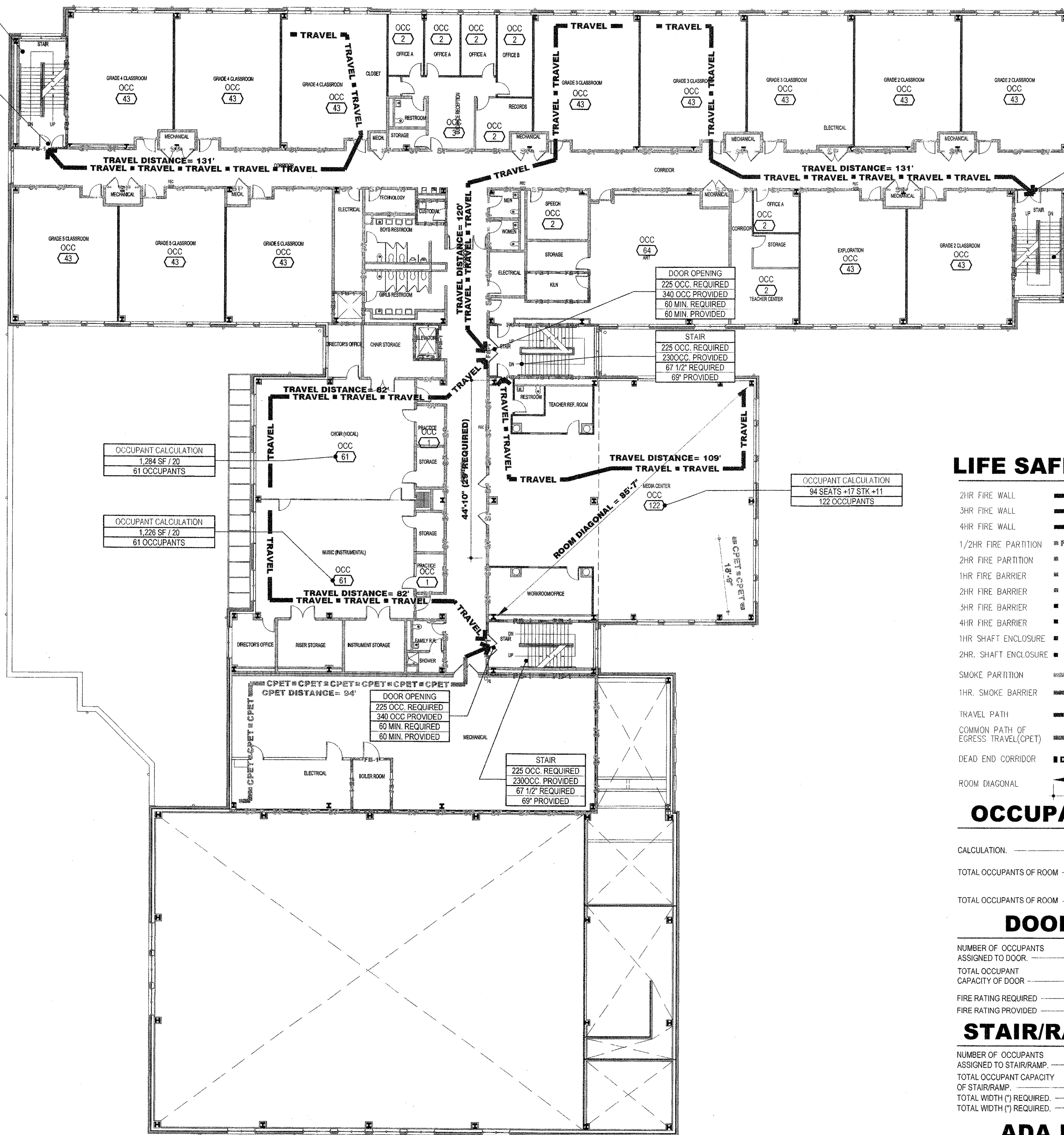
THIRD FLOOR SUBTOTAL:	719 OCC.	719 OCC.
-----------------------	----------	----------

OCCUPANT LOAD TOTAL:	4,239 OCC.	4,239 OCC.
----------------------	------------	------------

OCCUPANCY SEPARATION	
MIXED (NON-SEPARATED) OCCUPANCIES	SEPARATED OCCUPANCIES
SUPERVISED AUTOMATIC SPRINKLER SYSTEM	YES
FIRE ALARM SYSTEM	YES
VERTICAL OPENINGS	
ATRIUMS	NO
COMMUNICATING	NO
CONVENIENCE	NO

ADA ENTRY DATA	
NUMBER OF PUBLIC ENTRANCES	3
NUMBER OF PUBLIC ADA ENTRANCES PROVIDED	3
PERCENT OF ADA PUBLIC ENTRANCES PROVIDED (60% ADA REQUIRED)	100%

ADDITION DATA:
REFER TO SHEETS A6.21, A6.22, A6.23 FOR PARTITION TYPES AND RELATED CODE DATA.
REFER TO SHEETS A8.00 FOR DOOR SCHEDULE AND RELATED CODE DATA.



LIFE SAFETY LEGEND

- 2HR FIRE WALL **FW-2 ■ FW-2 ■ FW-2 ■ FW-2 ■**
- 3HR FIRE WALL **FW-3 ■ FW-3 ■ FW-3 ■ FW-3 ■**
- 4HR FIRE WALL **FW-4 ■ FW-4 ■ FW-4 ■ FW-4 ■**
- 1/2HR FIRE PARTITION **FP-1/2 ■ FP-1/2 ■ FP-1/2 ■ FP-1/2 ■**
- 2HR FIRE PARTITION **FP-1 ■ FP-1 ■ FP-1 ■ FP-1 ■**
- 1HR FIRE BARRIER **FB-1 ■ FB-1 ■ FB-1 ■ FB-1 ■**
- 2HR FIRE BARRIER **FB-2 ■ FB-2 ■ FB-2 ■ FB-2 ■**
- 3HR FIRE BARRIER **FB-3 ■ FB-3 ■ FB-3 ■ FB-3 ■**
- 4HR FIRE BARRIER **FB-4 ■ FB-4 ■ FB-4 ■ FB-4 ■**
- 1HR SHAFT ENCLOSURE **SE-1 ■ SE-1 ■ SE-1 ■ SE-1 ■**
- 2HR. SHAFT ENCLOSURE **SE-2 ■ SE-2 ■ SE-2 ■ SE-2 ■**
- SMOKE PARTITION **SP ■ SP ■ SP ■ SP ■ SP ■**
- 1HR. SMOKE BARRIER **SB-1 ■ SB-1 ■ SB-1 ■ SB-1 ■**
- TRAVEL PATH **TRAVEL ■ TRAVEL ■ TRAVEL ■**
- COMMON PATH OF EGRESS TRAVEL(CPET) **CPET ■ CPET ■ CPET ■ CPET ■**
- DEAD END CORRIDOR **DEAD END <20' ■ DEAD END <20' ■**
- ROOM DIAGONAL **ROOM DIAGONAL = 40'-0" ■**
40'-0" (31' REQUIRED)

OCCUPANT CALCS

CALCULATION:	OCCUPANT CALCULATION
	1,000 SF / 10
TOTAL OCCUPANTS OF ROOM	10 OCCUPANTS

TOTAL OCCUPANTS OF ROOM	OCC
	10

DOOR CALCS

NUMBER OF OCCUPANTS ASSIGNED TO DOOR:	DOOR OPENING
TOTAL OCCUPANT CAPACITY OF DOOR	300 OCC. REQUIRED
FIRE RATING REQUIRED	60 MIN. PROVIDED
FIRE RATING PROVIDED	60 MIN. PROVIDED

STAIR/RAMP CALCS

NUMBER OF OCCUPANTS ASSIGNED TO STAIR/RAMP:	STAIRS & RAMPS
TOTAL OCCUPANT CAPACITY OF STAIR/RAMP:	0 OCC. REQUIRED
TOTAL WIDTH (") REQUIRED:	0" REQUIRED
TOTAL WIDTH (") PROVIDED:	48" PROVIDED

ADA ENTRIES

BUILDING ENTRANCE TYPE	PUBLIC ENTRY ADA	PUBLIC ENTRY NON-ADA	NO PUBLIC ENTRY
------------------------	------------------	----------------------	-----------------