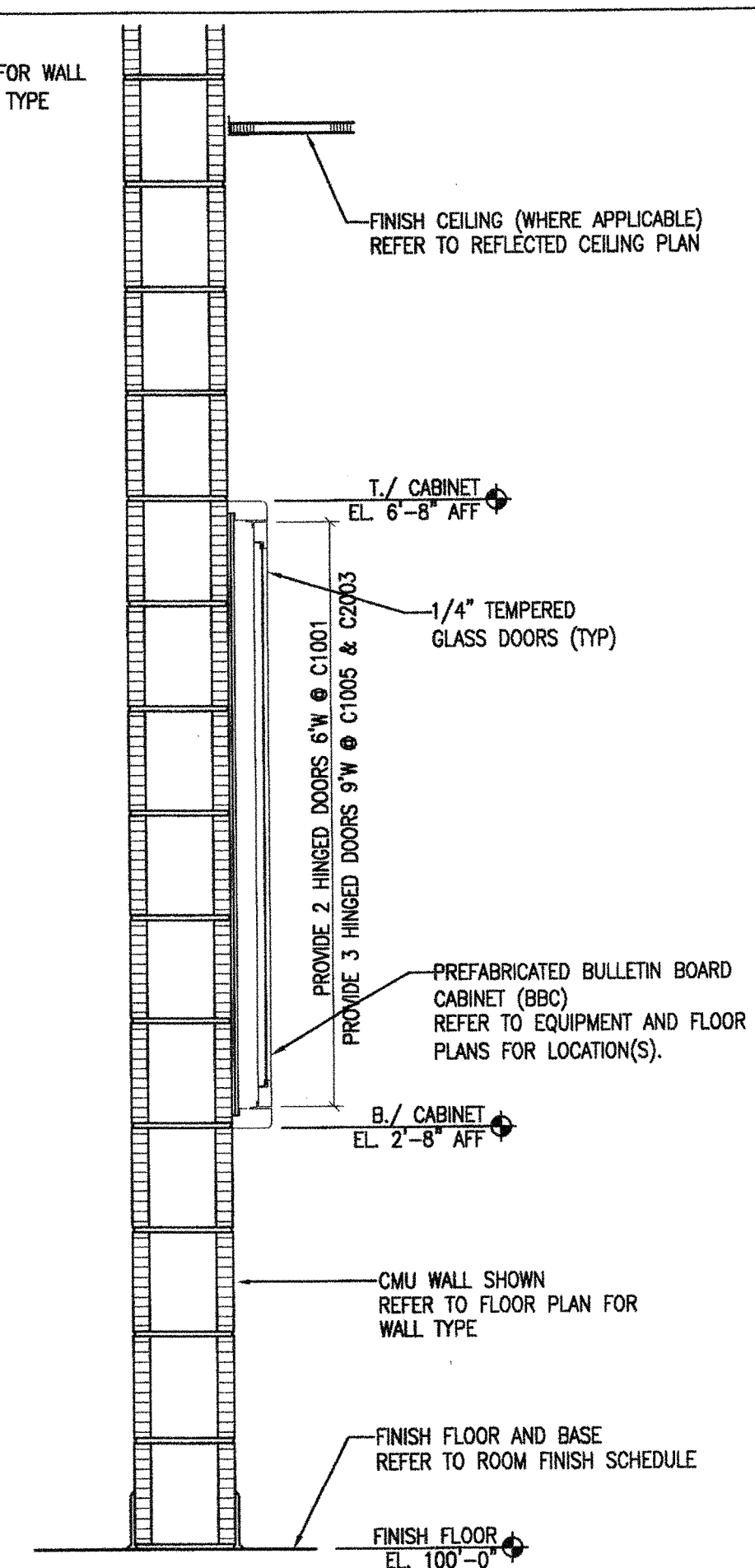


NOTE:  
FIELD VERIFY M.O. PRIOR TO  
FABRICATION/INSTALLATION

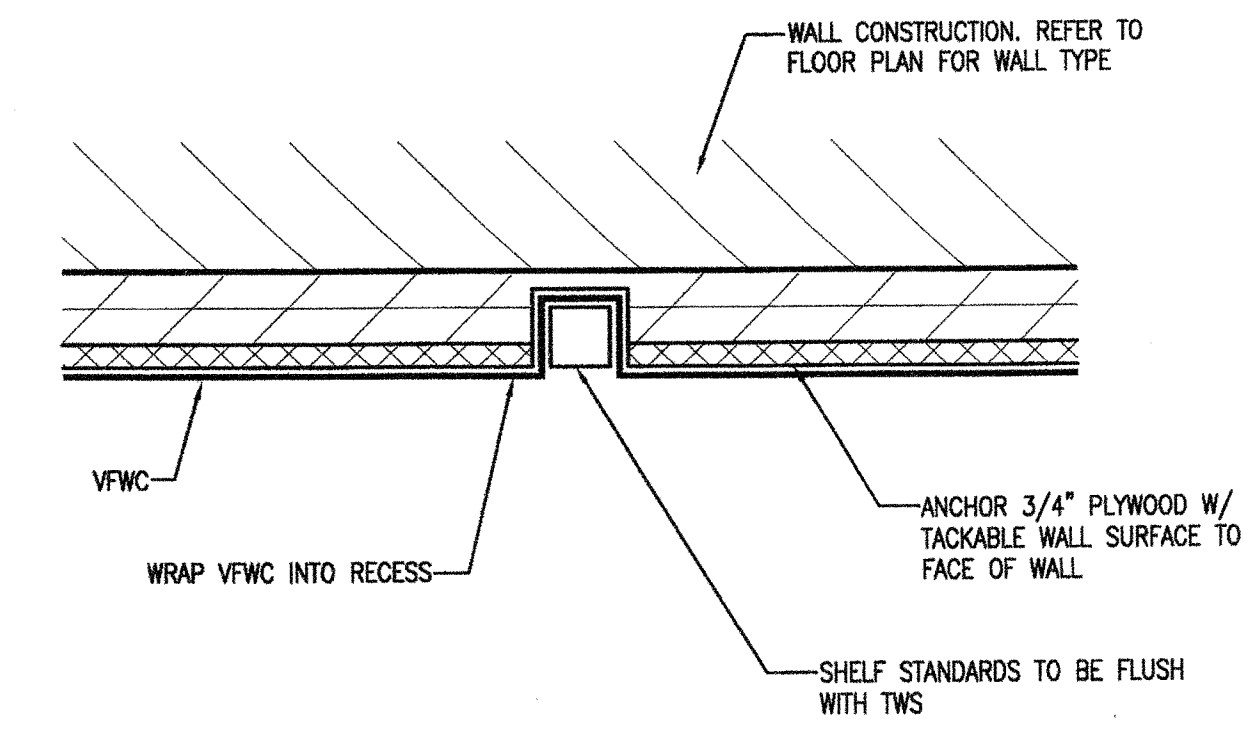
**7** DISPLAY CASE (DC)  
A1.64 SCALE: 1" = 1'-0"

**4** NOT USED  
A1.64 SCALE: 1" = 1'-0"

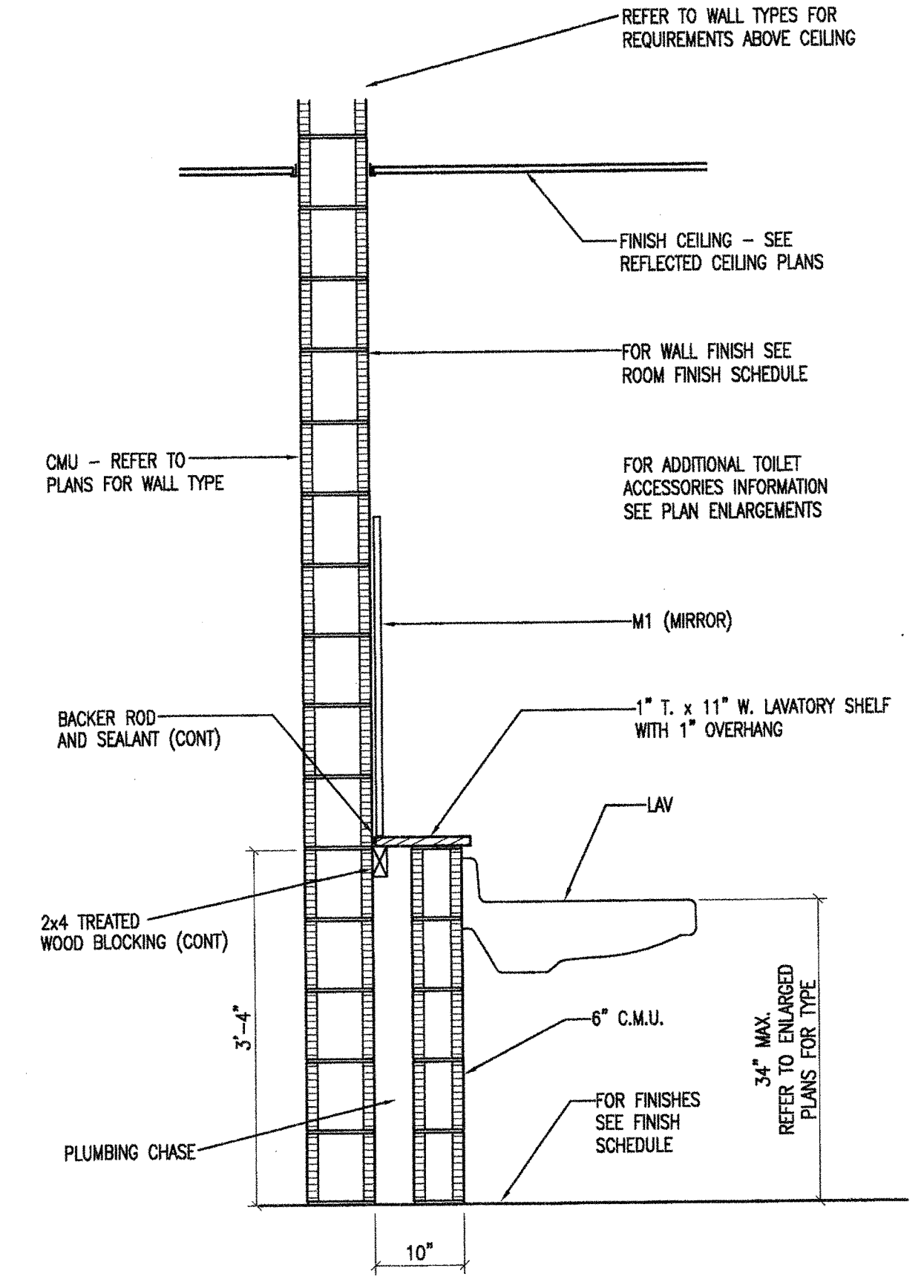
NOTE:  
SEE FLOOR PLANS FOR WALL  
CONTINUATION/WALL TYPE



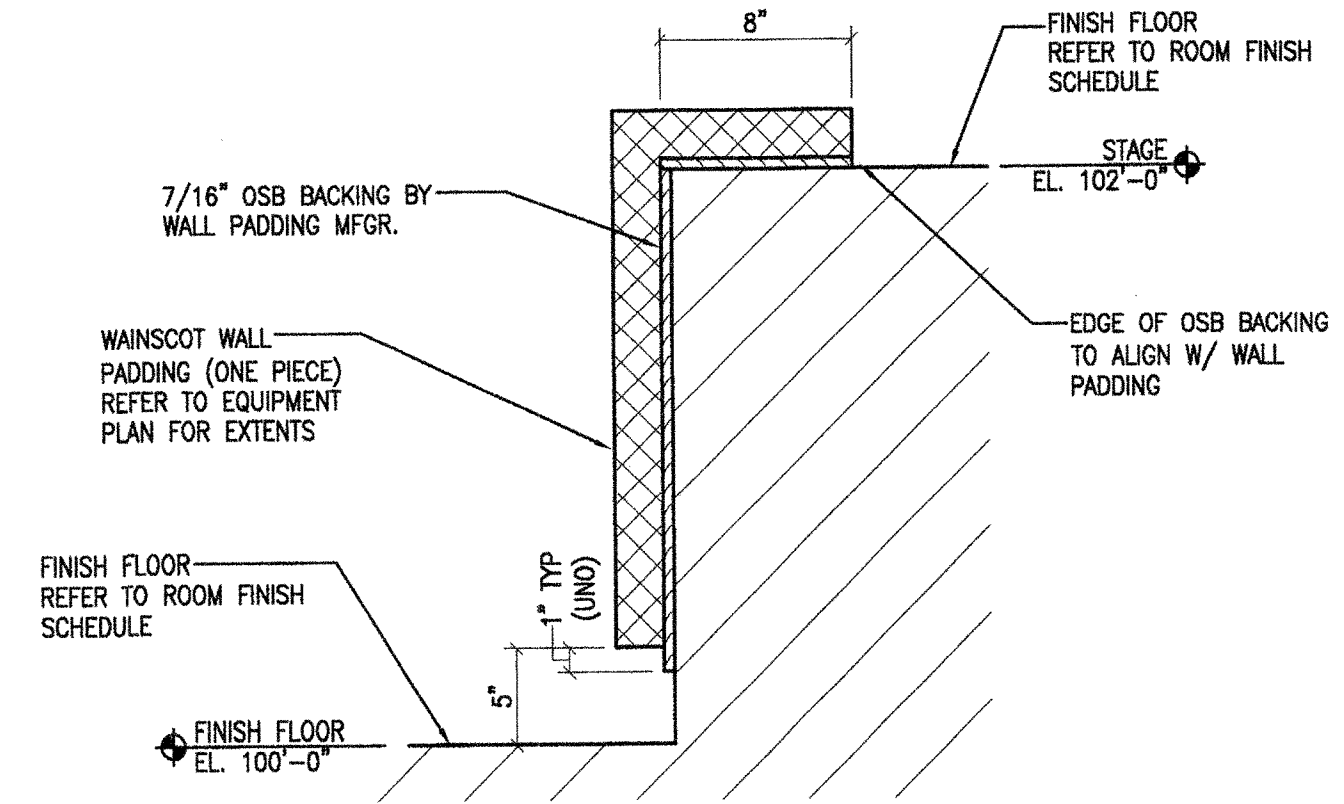
**5** BULLETIN BOARD CASE (BBC) SURFACE MOUNTED  
A1.64 SCALE: 1" = 1'-0"



**6** RECESSED DISPLAY CASE STANDARDS  
A1.64 SCALE: 1 1/2" = 1'-0"



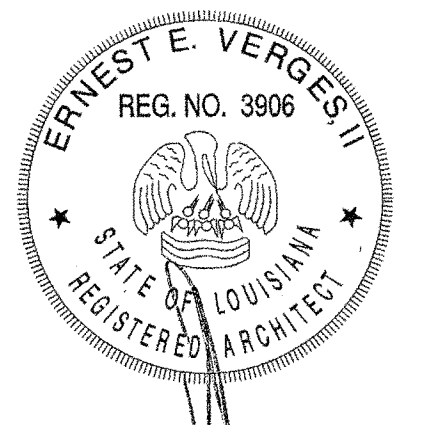
**1** LAVATORY SHELF  
A1.64 SCALE: 3/4" = 1'-0"



**2** WALL PADDING AT STAGE SECTION  
A1.64 SCALE: 1 1/2" = 1'-0"



**3** NOT USED  
A1.64 SCALE: 1 1/2" = 1'-0"



**NEW 3 SECTION ELEMENTARY SCHOOL  
AT FISK-HOWARD SCHOOL  
RECOVERY SCHOOL DISTRICT**

211 S. LOPEZ STREET NEW ORLEANS, LOUISIANA 70119

DATE ISSUED: 7 DECEMBER 2012  
REVISED:  
REVISED:  
REVISED:  
REVISED:  
DRAWN BY: MKS  
CHECKED BY:  
PHASE:

BID DOCUMENTS

11085

TITLE:  
EQUIPMENT DETAILS

SHEET:

A1.64