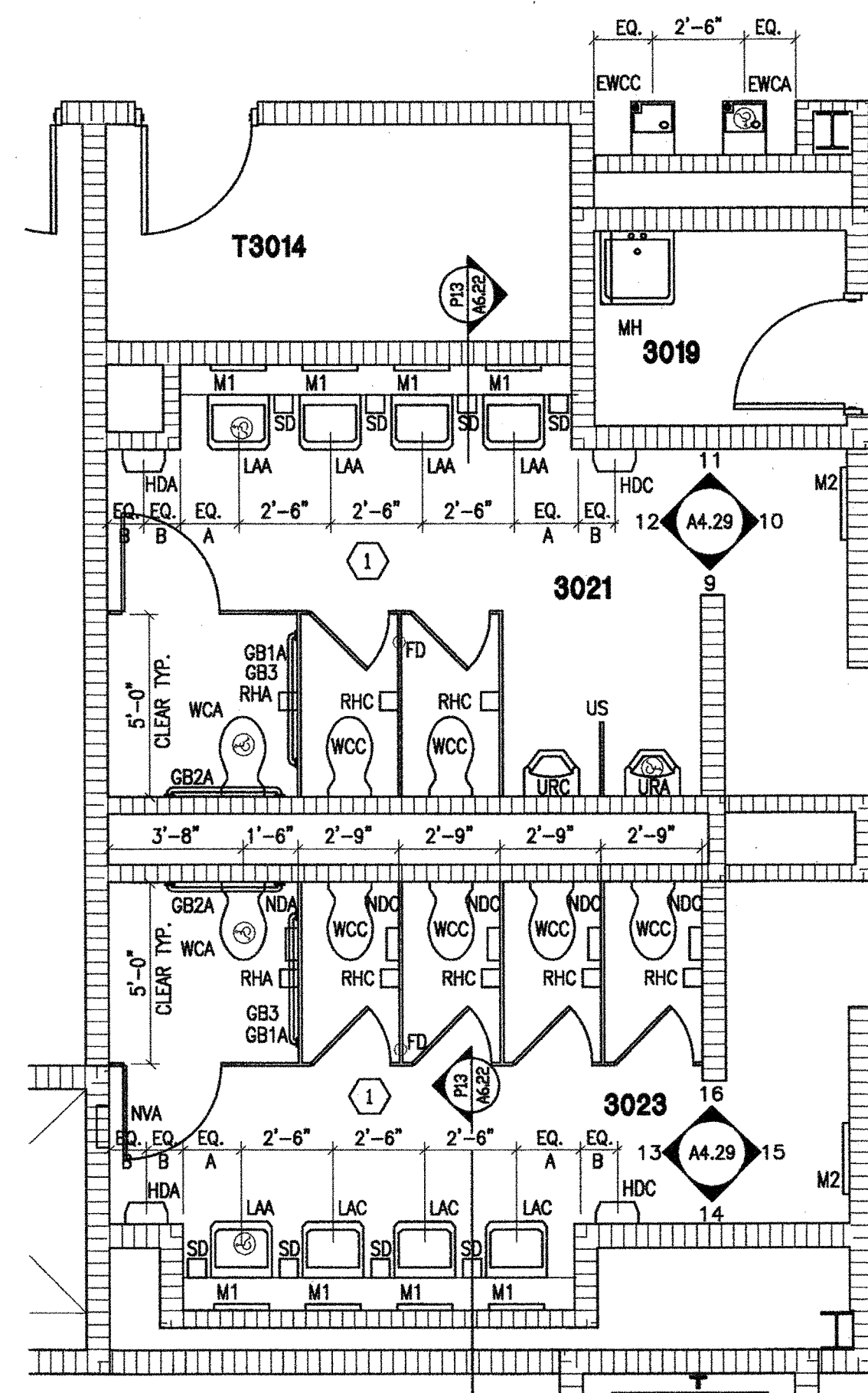
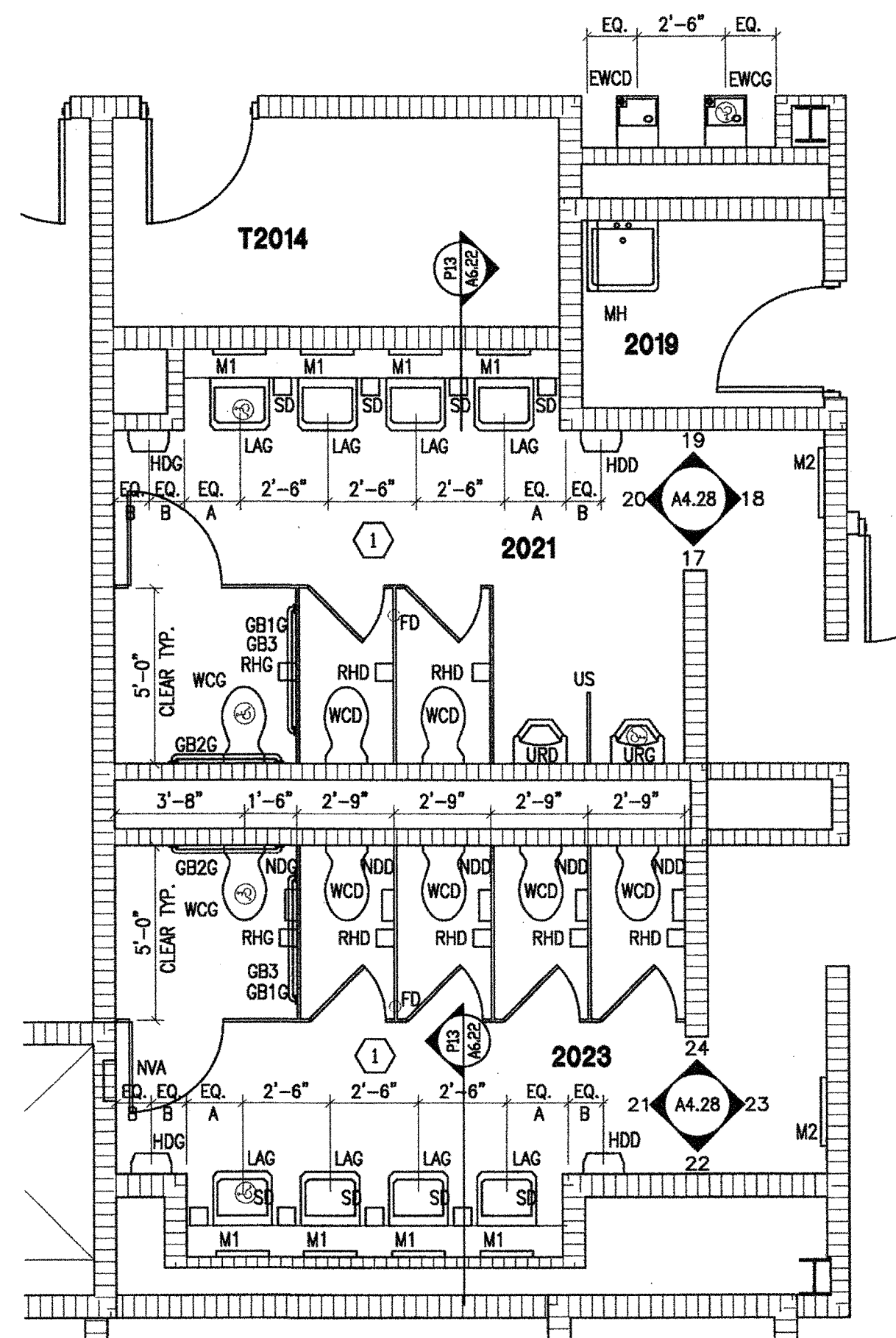


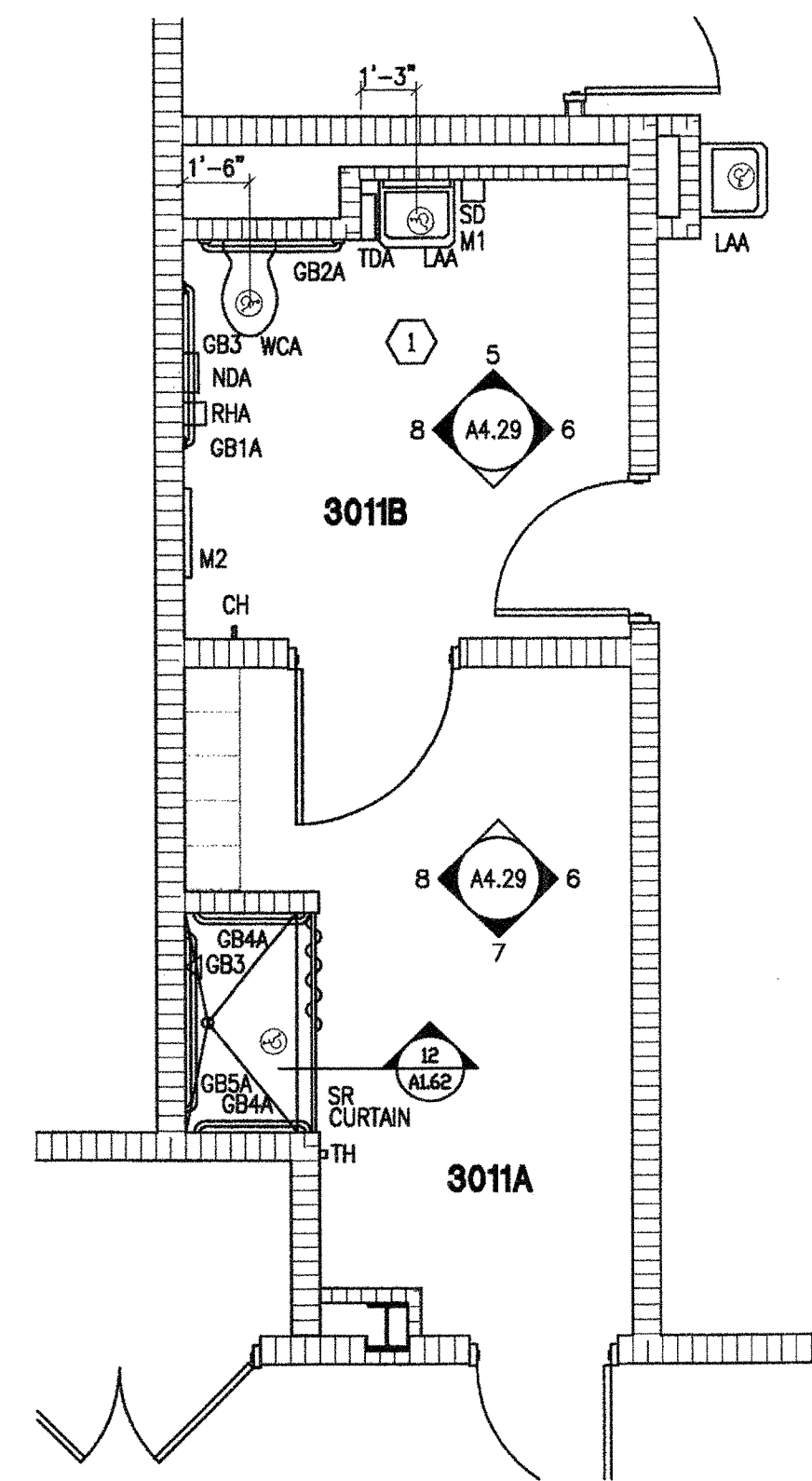
1 ENLARGED TOILET PLAN
A4.02 SCALE: 1/4" = 1'-0" UNIT D FIRST FLOOR



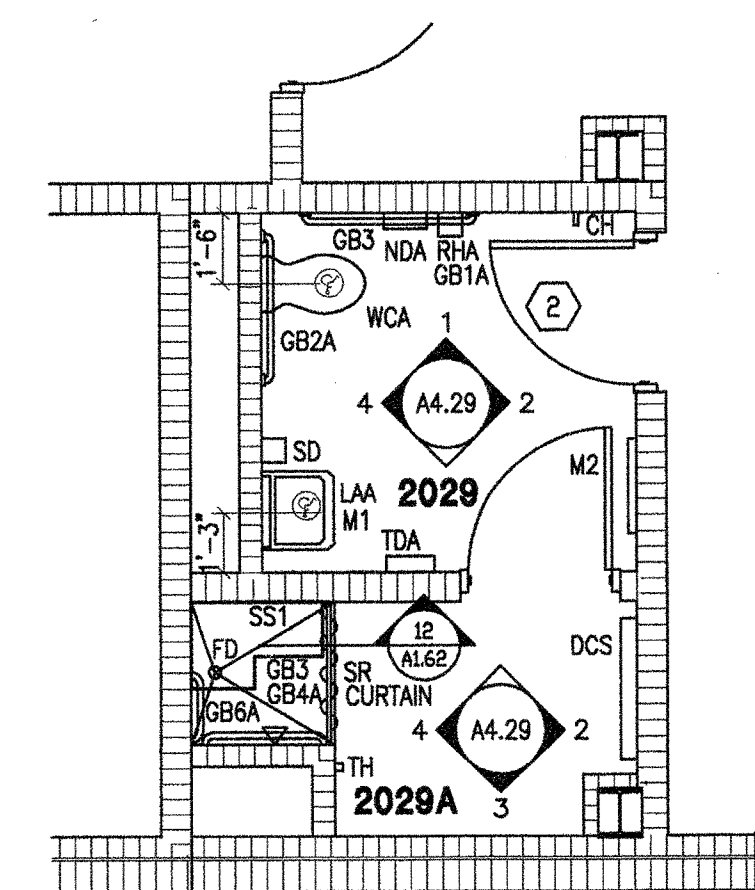
5 ENLARGED TOILET PLAN
A4.02 SCALE: 1/4" = 1'-0" UNIT A THIRD FLOOR



4 ENLARGED TOILET PLAN
A4.02 SCALE: 1/4" = 1'-0" UNIT A SECOND FLOOR



3 ENLARGED TOILET PLAN
A4.02 SCALE: 1/4" = 1'-0" UNIT A THIRD FLOOR



2 ENLARGED TOILET PLAN
A4.02 SCALE: 1/4" = 1'-0" UNIT C SECOND FLOOR

ENLARGED PLAN GENERAL NOTES:

- DEPTH OF ALL TOILET PARTITIONS SHALL HAVE A MINIMUM OF 5'-0" CLEAR INSIDE DIMENSION (U.N.O.).
- SEE EQUIPMENT PLANS FOR TOILET ACCESSORIES IN ROOMS NOT ENLARGED ON THIS SHEET.
- IN HANDICAP TOILET STALLS, THE FLUSH VALVES SHALL ALWAYS BE LOCATED ON THE CLEAR FLOOR SPACE SIDE OF THE STALL PER ADA.
- COORDINATE HEIGHT OF GRAB BAR WITH TANK OF FLOOR MOUNTED WATER CLOSET OR FLUSH VALVE OF WALL MOUNTED CLOSET.
- REFER TO DRAWING SHEET A4.00 FOR MOUNTING HEIGHTS.
- REFER TO PLUMBING DRAWINGS FOR FIXTURE TYPES.
- REFER TO SPECIFICATIONS FOR OWNER FURNISHED ACCESSORIES AND CONTRACTOR INSTALLED.

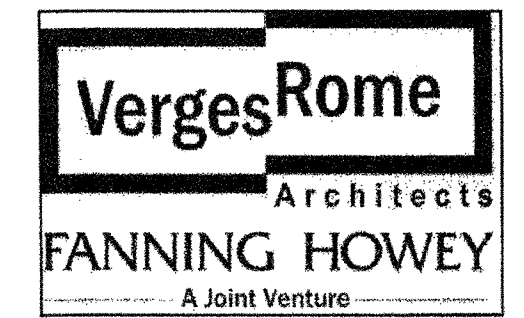
ENLARGED PLAN KEY NOTES:

- MIRRORS IN THIS ROOM SHALL BE STAINLESS STEEL.
- MIRROR IN THIS ROOM SHALL BE GLASS.

TOILET ACCESSORIES ABBREVIATIONS

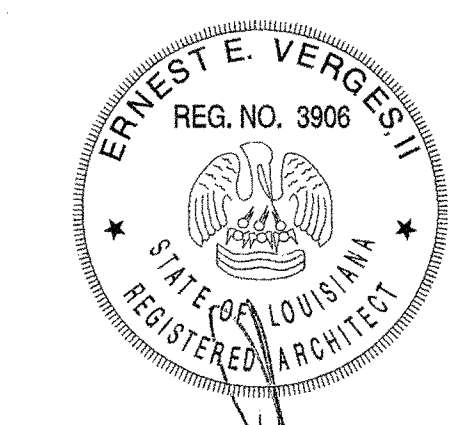
CH:	COAT HOOK
DCS:	DIAPER CHANGING STATION
DF:	DRINKING FOUNTAIN
EWCC:	ELECTRIC WATER COOLER
FD:	FLOOR DRAIN
GB1:	GRAB BAR - 42"
GB2:	GRAB BAR - 36"
GB3:	GRAB BAR - 18" VERTICAL
GB4:	GRAB BAR - 30"
GB5:	GRAB BAR - 48"
GB6:	GRAB BAR - 18" HORIZONTAL
HD:	HAND DRYER
HRD:	HAIR DRYER
LA:	LAVATORY
M1:	MIRROR - 18"Wx36"H
M2:	MIRROR - 24"Wx60"H
M3:	MIRROR - 48"Wx36"H
MH:	MOP HOLDER
ND:	NAPKIN DIPOSAL
NV:	NAPKIN VENDOR
PSS:	PENCIL SHARPENER SUPPORT
RH:	ROLL HOLDER (TOILET PAPER DISPENSER)
SD:	SOAP DISPENSER
SR:	SHOWER ROD
SS:	SHOWER SEAT
TD:	PAPER TOWEL DISPENSER
TDD:	PAPER TOWEL DISPENSER/DISPOSAL
TH:	TOWEL HOOK
UR:	URINAL
US:	URINAL SCREEN
WC:	WATER CLOSET
WF:	WASH FOUNTAIN

NOTE: THE LETTERS (A THRU H) FOLLOWING THE ABBREVIATIONS REFERENCES THE GRADE LEVEL MOUNTING HEIGHTS (A4.00)



320 N. Carrollton Avenue, Suite 100
New Orleans, Louisiana 70119
t. 504.488.7739 f. 504.488.7743

© copyright 2012



NEW 3 SECTION ELEMENTARY SCHOOL
 AT FISK-HOWARD SCHOOL
 RECOVERY SCHOOL DISTRICT
 211 S. LOPEZ STREET
 NEW ORLEANS, LOUISIANA 70119

DATE ISSUED:	7 DECEMBER, 2012
REVISED:	
REVISED:	
REVISED:	
REVISED:	
DRAWN BY:	MDM
CHECKED BY:	
PHASE:	

BID DOCUMENTS

11085

TITLE:
ENLARGED PLANS

SHEET:
A4.02