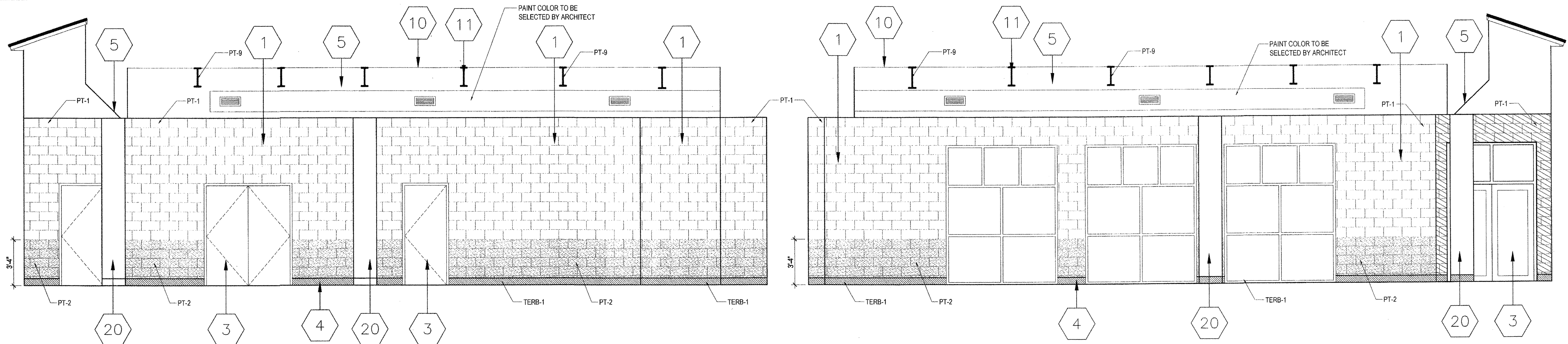


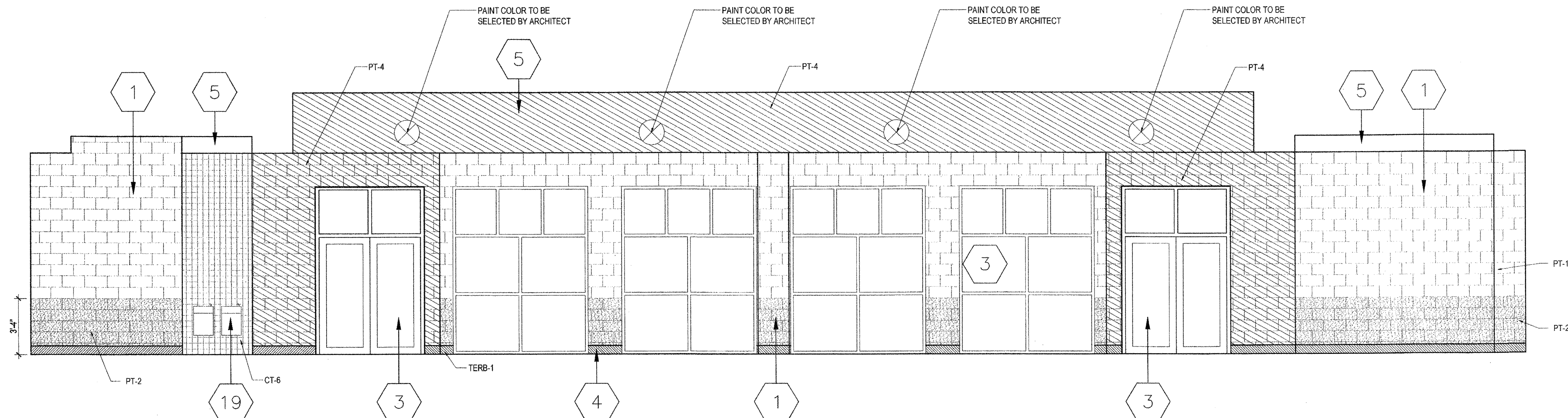
**NEW 3 SECTION ELEMENTARY SCHOOL
AT FISK-HOWARD SCHOOL
RECOVERY SCHOOL DISTRICT**

NEW ORLEANS, LOUISIANA 70119
211 S. LOPEZ STREET

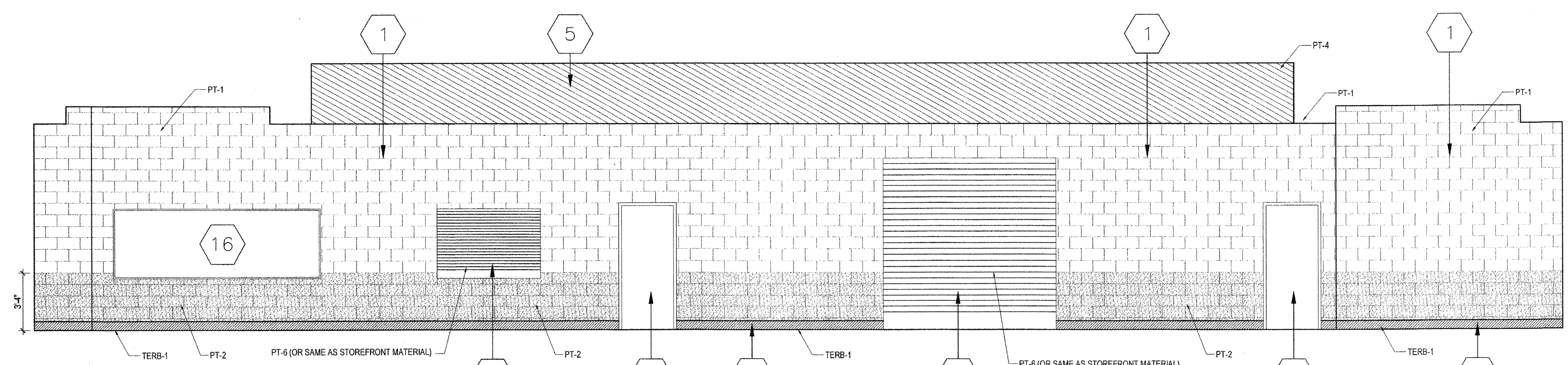


2 STUDENT DINING- 1037 NORTH ELEVATION
A4.24 SCALE: 1/4" = 1'-0"

1 STUDENT DINING- 1037 SOUTH ELEVATION
A4.24 SCALE: 1/4" = 1'-0"



3 STUDENT DINING- 1037 EAST ELEVATION
A4.24 SCALE: 1/4" = 1'-0"



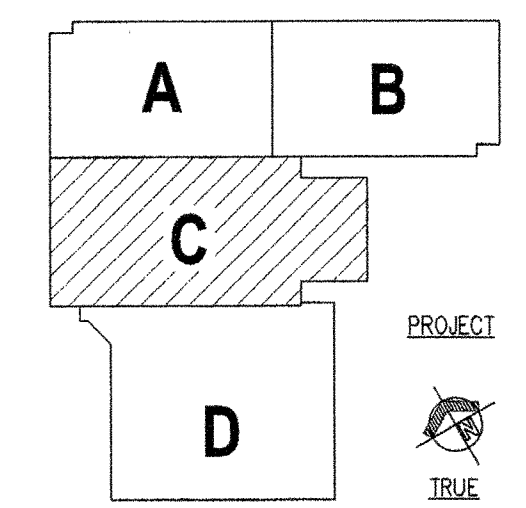
4 STUDENT DINING- 1037 WEST ELEVATION
A4.24 SCALE: 1/4" = 1'-0"

GENERAL NOTES

- ALL WALLS OF CLASSROOM ALCOVES SHALL BE PAINTED SPECIFIED COLOR (SEE A6.00, A6.01, A6.02).
- INSTALL TERRAZZO BASE TERB-1 A2 FIRST FLOOR CORRIDORS. QUARRY TILE BASE QTB-1 SHALL BE INSTALLED @ 2ND & 3RD FLOOR CORRIDORS. REFER TO SHEETS A6.00 & A6.08 FOR LOCKER COLOR DESIGNATIONS.
- UNLESS OTHERWISE NOTED, LOCKERS ARE TO BE LOCKER COLOR 1 AS LOCKER PER SPECIFICATIONS. RETURN TERRAZZO BASE AND ALL WALL BASE INTO DOOR OPENINGS / FRAMES.
- CMU BLOCK AND TILE PATTERNS ARE REPRESENTATIVE OF MATERIAL ONLY, NOT FOR USE OF COURSING LAYOUT.

INTERIOR ELEVATION NOTES

- (ALL NOTES MAY NOT BE USED ON THIS DRAWING)
- CONCRETE MASONRY UNIT (CMU), PAINTED.
 - GYPSUM WALLBOARD (GWB) PAINTED.
 - REFER TO OPENING SCHEDULE.
 - WALL BASE, REFER TO ROOM FINISH SCHEDULE.
 - GYPSUM WALLBOARD BULKHEAD (GWBH), PAINTED.
 - BLEACHERS, REFER TO EQUIPMENT PLANS.
 - BASKETBALL BACKSTOP, REFER TO EQUIPMENT PLANS.
 - SCOREBOARD, REFER TO EQUIPMENT PLANS AND ELECTRICAL PLANS.
 - WALL PADDING, REFER TO EQUIPMENT PLANS.
 - STEEL DECK, PAINTED.
 - STEEL JOISTS, PAINTED.
 - STEEL CHANNEL TO CAP CMU, PAINTED. REFER TO WALL SECTIONS.
 - GYM DIVIDER CURTAIN, REFER TO EQUIPMENT PLANS.
 - EDUCATIONAL CASEWORK, REFER TO EQUIPMENT PLANS.
 - MARKERBOARD, REFER TO EQUIPMENT PLANS.
 - TACKBOARD, REFER TO EQUIPMENT PLANS.
 - INTERACTIVE WHITE BOARD, REFER TO TECHNOLOGY DRAWINGS.
 - TACKABLE WALL SURFACE FROM CORNER TO CORNER AND TOP OF RESILIENT BASE TO CEILING. REFER TO DETAIL 16-A1.62.
 - ELECTRIC WATER COOLER.
 - COLUMN WRAP, REFER TO PLAN DETAILS.
 - STAGE OPENING / CURTAIN.
 - DASHED LINE INDICATES ACOUSTICAL CURTAIN IN CLOSED POSITION.
 - SUSPENDED CEILING LEVEL.
 - PAINTED EXPOSED STRUCTURE AT OPENING BETWEEN SUSPENDED CEILING.
 - LIBRARY SHELVING, REFER TO EQUIPMENT PLANS.
 - OPERABLE WALL.
 - ABUSE RESISTANT ACOUSTICAL WALL TREATMENT (AR-AWT), PAINTED.
 - ACOUSTICAL WALL TREATMENT (AWT).
 - WALL PADDING AT STAGE, SEE DETAIL 2-A1.64.
 - 12"H TACK STRIP.
 - TWS (TACKABLE WALL SURFACE) TO BE 4'-0"W PANELS AND RUN VERTICALLY.
 - MECHANICAL DUCTWORK, PAINTED.
 - MECHANICAL LOUVER, PAINT TO MATCH ADJACENT WALL COLOR.



KEY PLAN

DATE ISSUED:	7 DECEMBER, 2012
REVISED:	
REVISED:	
REVISED:	
REVISED:	
DRAWN BY:	SMB, HML
CHECKED BY:	DGR, JFM

PHASE: **BID DOCUMENTS**

11085

TITLE: **INTERIOR ELEVATIONS**

SHEET: **A4.24**