



**NEW 3 SECTION ELEMENTARY SCHOOL
AT FISK-HOWARD SCHOOL
RECOVERY SCHOOL DISTRICT**
 211 S. LOPEZ STREET
 NEW ORLEANS, LOUISIANA 70119

DATE ISSUED: 7 DECEMBER, 2012
 REVISED: _____
 REVISED: _____
 REVISED: _____
 REVISED: _____
 DRAWN BY: SMB, HML
 CHECKED BY: DGR, JFM
 PHASE:

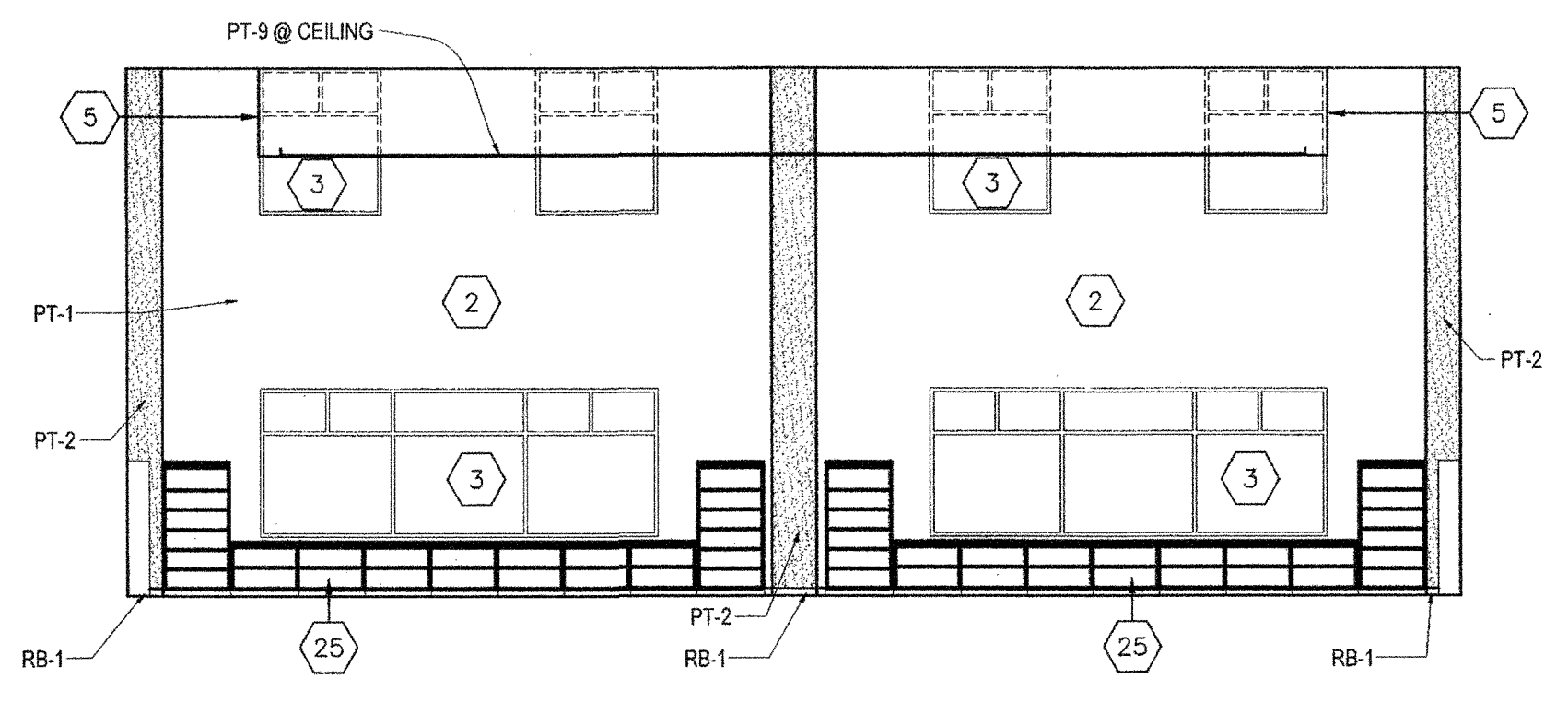
BID
DOCUMENTS

11085

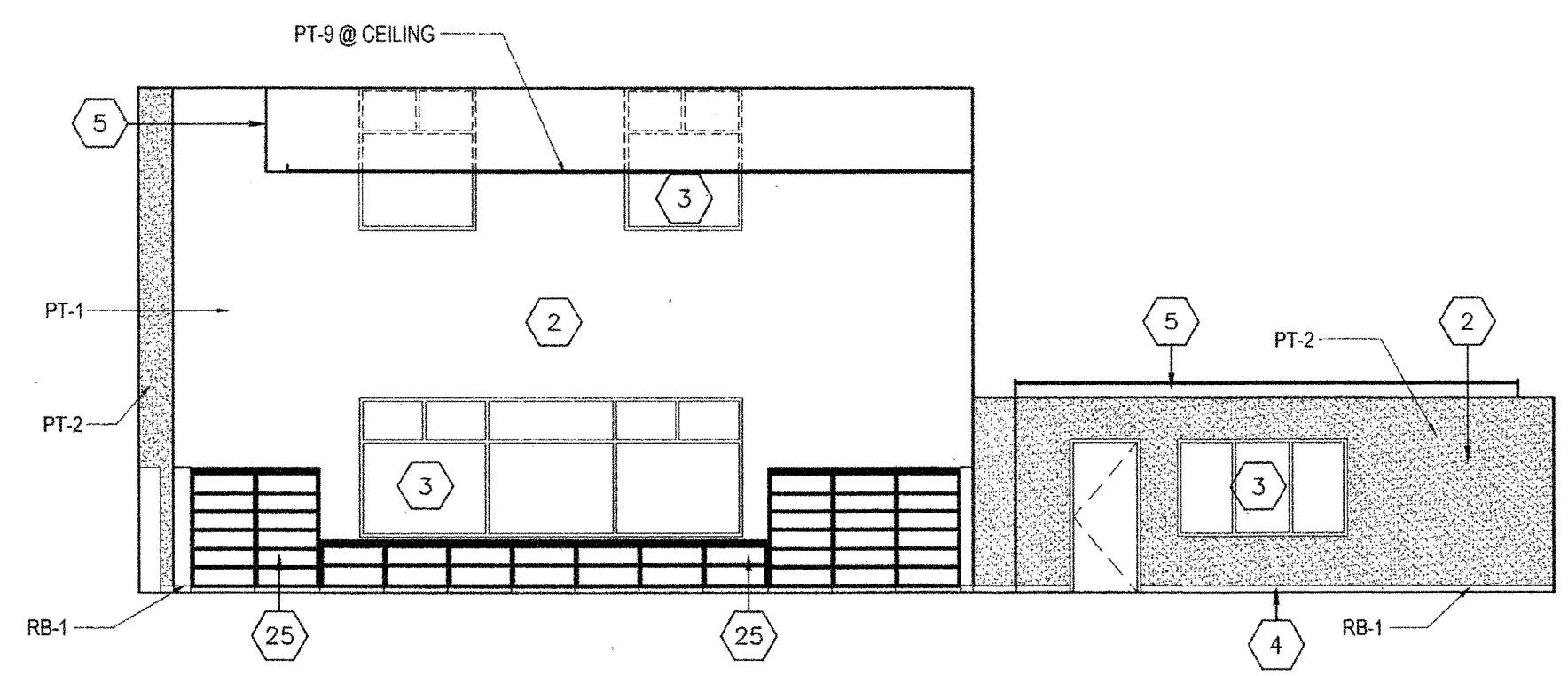
TITLE:
INTERIOR ELEVATIONS

SHEET:

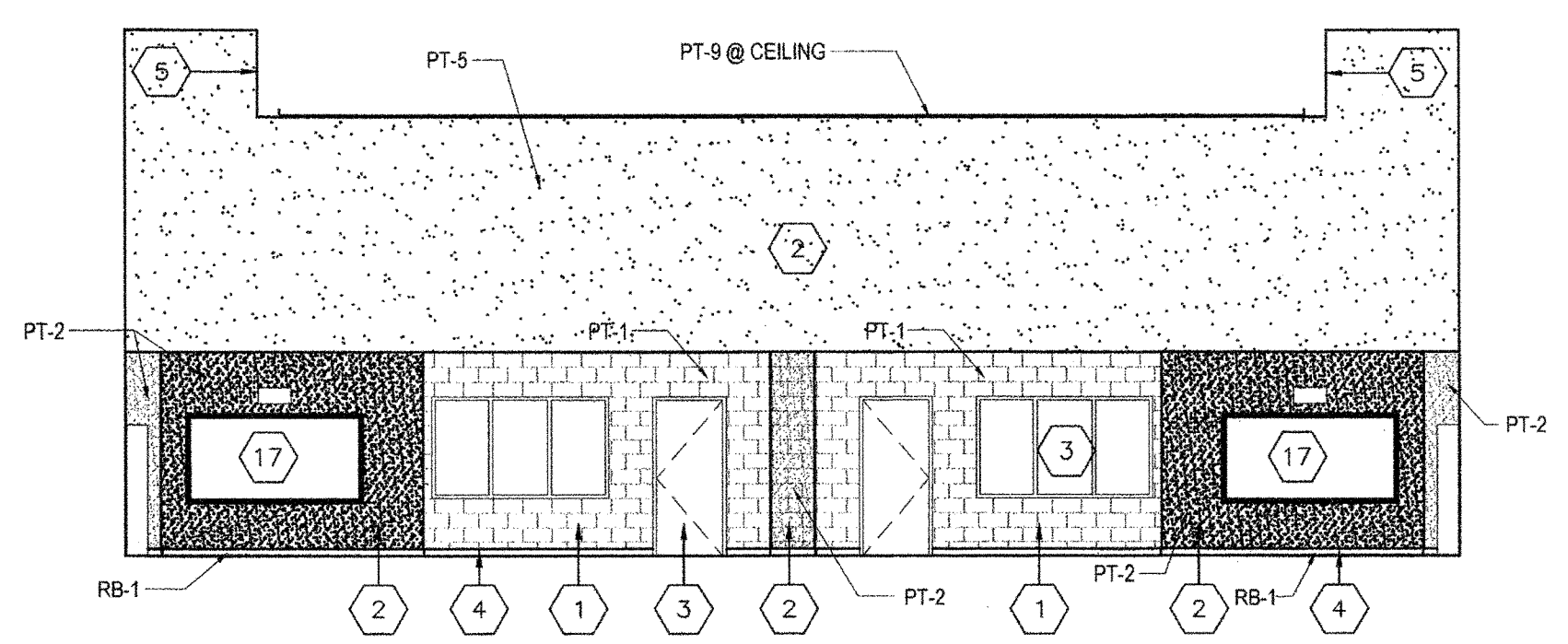
A4.25



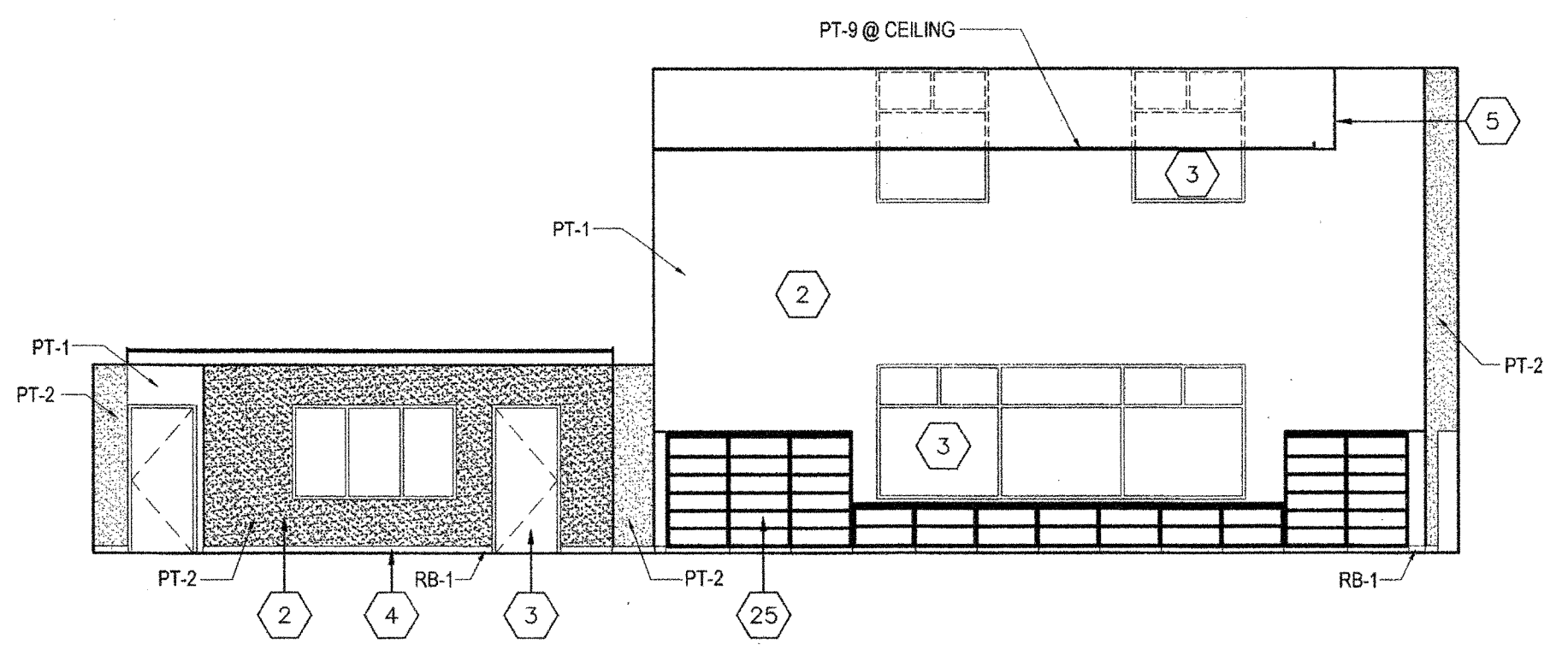
1 MEDIA CENTER- 2030 EAST ELEVATION
A4.25 / SCALE: 1/8" = 1'-0"



2 MEDIA CENTER- 2030 SOUTH ELEVATION
A4.25 / SCALE: 1/8" = 1'-0"



3 MEDIA CENTER- 2030 WEST ELEVATION
A4.25 / SCALE: 1/8" = 1'-0"



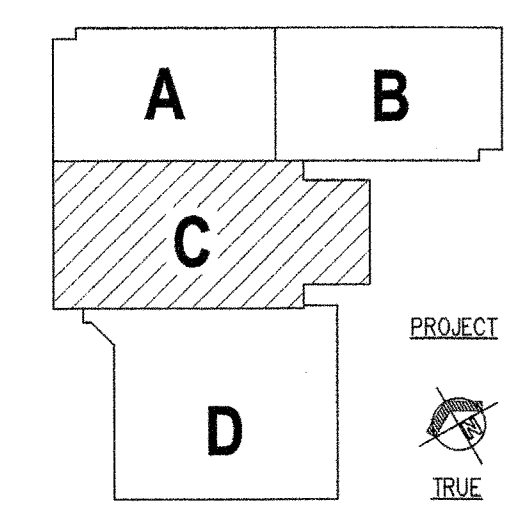
4 MEDIA CENTER- 2030 NORTH ELEVATION
A4.25 / SCALE: 1/8" = 1'-0"

GENERAL NOTES

1. ALL WALLS OF CLASSROOM ALCOVES SHALL BE PAINTED SPECIFIED COLOR (SEE A6.00, A6.01, A6.02).
2. INSTALL TERRAZZO BASE TERR-1 AS FIRST FLOOR CORRIDORS. QUARRY TILE BASE QT8-1 SHALL BE INSTALLED @ 2ND & 3RD FLOOR CORRIDORS.
3. REFER TO SHEETS A6.00 & A6.08 FOR LOCKER COLOR DESIGNATIONS.
4. UNLESS OTHERWISE NOTED, LOCKERS ARE TO BE LOCKER COLOR 1 AS LOCKER PER SPECIFICATIONS.
5. RETURN TERRAZZO BASE AND ALL WALL BASE INTO DOOR OPENINGS / FRAMES.
6. EXPOSED DUCTWORK IS TO BE PAINTED.
7. CMU BLOCK AND TILE PATTERNS ARE REPRESENTATIVE OF MATERIAL ONLY, NOT FOR USE OF COURSING LAYOUT.

INTERIOR ELEVATION NOTES

- (ALL NOTES MAY NOT BE USED ON THIS DRAWING)
1. CONCRETE MASONRY UNIT (CMU), PAINTED.
 2. GYPSUM WALLBOARD (GWB) PAINTED.
 3. REFER TO OPENING SCHEDULE.
 4. WALL BASE, REFER TO ROOM FINISH SCHEDULE.
 5. GYPSUM WALLBOARD BULKHEAD (GWBH), PAINTED.
 6. BLEACHERS, REFER TO EQUIPMENT PLANS.
 7. BASKETBALL BACKSTOP, REFER TO EQUIPMENT PLANS.
 8. SCOREBOARD, REFER TO EQUIPMENT PLANS AND ELECTRICAL PLANS.
 9. WALL PADDING, REFER TO EQUIPMENT PLANS.
 10. STEEL DECK, PAINTED.
 11. STEEL JOISTS, PAINTED.
 12. STEEL CHANNEL TO CAP CMU, PAINTED. REFER TO WALL SECTIONS.
 13. GYM DIVIDER CURTAIN, REFER TO EQUIPMENT PLANS.
 14. EDUCATIONAL CASEWORK, REFER TO EQUIPMENT PLANS.
 15. MARKERBOARD, REFER TO EQUIPMENT PLANS.
 16. TACKBOARD, REFER TO EQUIPMENT PLANS.
 17. INTERACTIVE WHITE BOARD, REFER TO TECHNOLOGY DRAWINGS.
 18. TACKABLE WALL SURFACE FROM CORNER TO CORNER AND TOP OF RESILIENT BASE TO CEILING. REFER TO DETAIL 16-A1.82.
 19. ELECTRIC WATER COOLER.
 20. COLUMN WRAP, REFER TO PLAN DETAILS.
 21. STAGE OPENING / CURTAIN.
 22. DASHED LINE INDICATES ACOUSTICAL CURTAIN IN CLOSED POSITION.
 23. SUSPENDED CEILING LEVEL.
 24. PAINTED EXPOSED STRUCTURE AT OPENING BETWEEN SUSPENDED CEILING.
 25. LIBRARY SHELVING, REFER TO EQUIPMENT PLANS.
 26. OPERABLE WALL.
 27. ABUSE RESISTANT ACOUSTICAL WALL TREATMENT (AR-AWT), PAINTED.
 28. ACOUSTICAL WALL TREATMENT (AWT).
 29. WALL PADDING AT STAGE, SEE DETAIL 2-A1.64.
 30. 12" TACK STRIP
 31. TWS (TACKABLE WALL SURFACE) TO BE 4'-0"W PANELS AND RUN VERTICALLY.
 32. MECHANICAL DUCTWORK, PAINTED.
 33. MECHANICAL LOUVER, PAINT TO MATCH ADJACENT WALL COLOR.



KEY PLAN