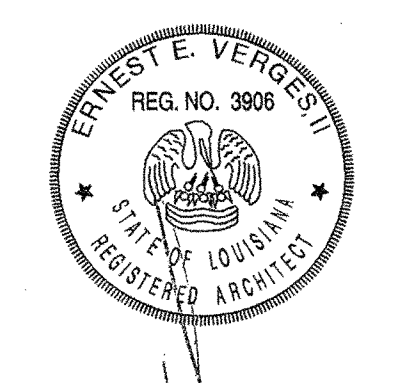
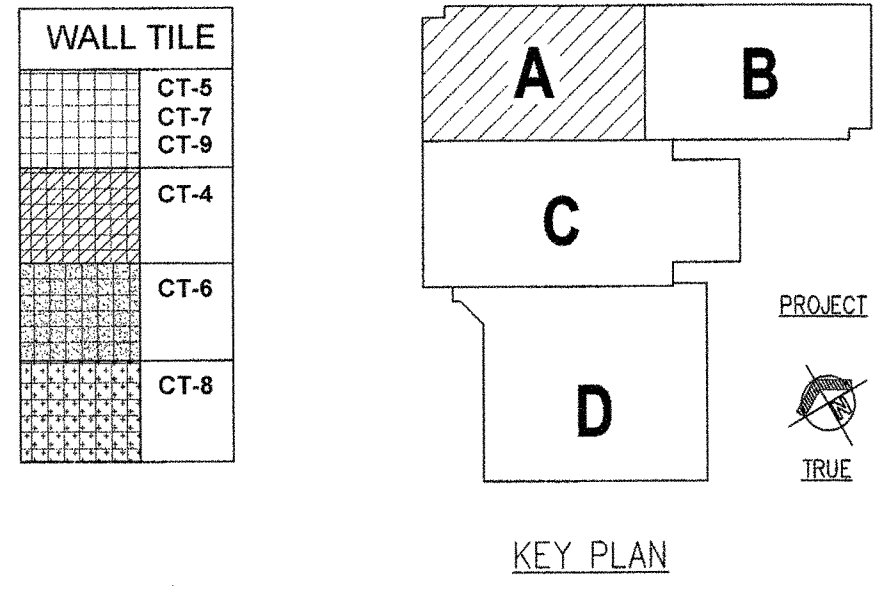


- GENERAL NOTES**
- ALL WALLS OF CLASSROOM ALCOVES SHALL BE PAINTED SPECIFIED COLOR (SEE A6.00, A6.01, A6.02).
  - INSTALL TERRAZZO BASE TERB-1 A2 FIRST FLOOR CORRIDORS. QUARRY TILE BASE QTB-1 SHALL BE INSTALLED @ 2ND & 3RD FLOOR CORRIDORS. REFER TO SHEETS A6.00 & A6.08 FOR LOCKER COLOR DESIGNATIONS.
  - UNLESS OTHERWISE NOTED, LOCKERS ARE TO BE LOCKER COLOR 1 AS LOCKER PER SPECIFICATIONS. RETURN TERRAZZO BASE AND ALL WALL BASE INTO DOOR OPENINGS / FRAMES.
  - EXPOSED DUCTWORK IS TO BE PAINTED CMU BLOCK AND TILE PATTERNS ARE REPRESENTATIVE OF MATERIAL ONLY, NOT FOR USE OF COURSEING LAYOUT.

- INTERIOR ELEVATION NOTES**
- (ALL NOTES MAY NOT BE USED ON THIS DRAWING)
- CONCRETE MASONRY UNIT (CMU), PAINTED.
  - GYPSUM WALLBOARD (GWB) PAINTED.
  - REFER TO OPENING SCHEDULE.
  - WALL BASE, REFER TO ROOM FINISH SCHEDULE.
  - GYPSUM WALLBOARD BULKHEAD (GWB), PAINTED.
  - BLEACHERS, REFER TO EQUIPMENT PLANS.
  - BASKETBALL BACKSTOP, REFER TO EQUIPMENT PLANS.
  - SCOREBOARD, REFER TO EQUIPMENT PLANS AND ELECTRICAL PLANS.
  - WALL PADDING, REFER TO EQUIPMENT PLANS.
  - STEEL DECK, PAINTED.
  - STEEL JOISTS, PAINTED.
  - STEEL CHANNEL TO CAP CMU, PAINTED. REFER TO WALL SECTIONS.
  - GYM DIVIDER CURTAIN, REFER TO EQUIPMENT PLANS.
  - EDUCATIONAL CASEWORK, REFER TO EQUIPMENT PLANS.
  - MARKERBOARD, REFER TO EQUIPMENT PLANS.
  - TACKBOARD, REFER TO EQUIPMENT PLANS.
  - INTERACTIVE WHITE BOARD, REFER TO TECHNOLOGY DRAWINGS.
  - TACKABLE WALL SURFACE FROM CORNER TO CORNER AND TOP OF RESILIENT BASE TO CEILING. REFER TO DETAIL 16-A1.62.
  - ELECTRIC WATER COOLER.
  - COLUMN WRAP, REFER TO PLAN DETAILS.
  - STAGE OPENING / CURTAIN.
  - DASHED LINE INDICATES ACOUSTICAL CURTAIN IN CLOSED POSITION.
  - SUSPENDED CEILING LEVEL.
  - PAINTED EXPOSED STRUCTURE AT OPENING BETWEEN SUSPENDED CEILING.
  - LIBRARY SHELVING, REFER TO EQUIPMENT PLANS.
  - OPERABLE WALL.
  - ABUSE RESISTANT ACOUSTICAL WALL TREATMENT (AR-AWT), PAINTED.
  - ACOUSTICAL WALL TREATMENT (AWT).
  - WALL PADDING AT STAGE, SEE DETAIL 2-A1.64.
  - 12"H TACK STRIP.
  - TWS (TACKABLE WALL SURFACE) TO BE 4'-0"W PANELS AND RUN VERTICALLY.
  - MECHANICAL DUCTWORK, PAINTED.
  - MECHANICAL LOUVER, PAINT TO MATCH ADJACENT WALL COLOR.



**NEW 3 SECTION ELEMENTARY SCHOOL  
AT FISK-HOWARD SCHOOL  
RECOVERY SCHOOL DISTRICT**

211 S. LOPEZ STREET NEW ORLEANS, LOUISIANA 70119