



**NEW 3 SECTION ELEMENTARY SCHOOL  
AT FISK-HOWARD SCHOOL  
RECOVERY SCHOOL DISTRICT**

NEW ORLEANS, LOUISIANA 70119  
211 S. LOPEZ STREET

DATE ISSUED: 7 DECEMBER, 2012  
REVISED:  
REVISED:  
REVISED:  
DRAWN BY: SMB, HML  
CHECKED BY: DGR, JFM  
PHASE:

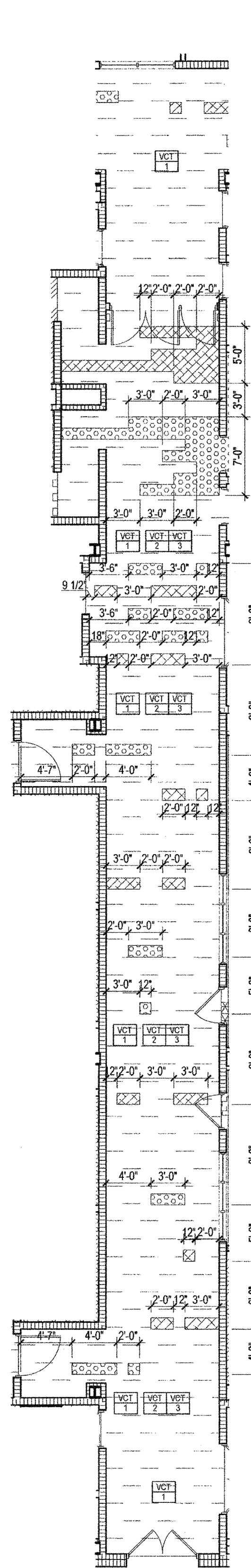
BID  
DOCUMENTS

11085

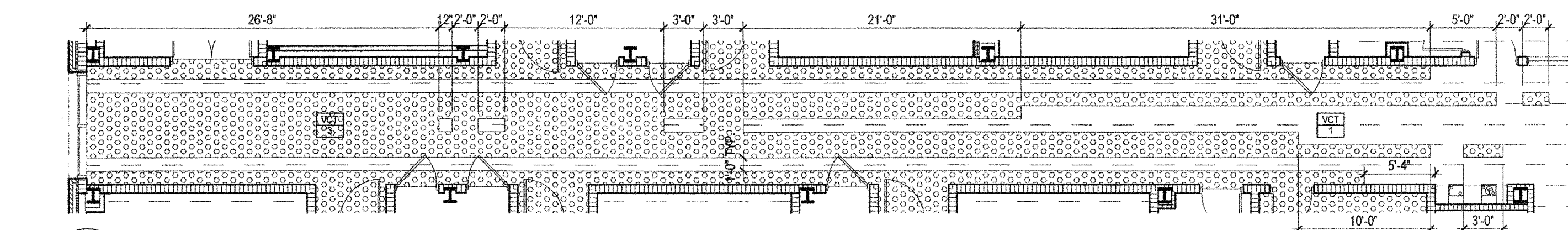
TITLE:  
ENLARGED FLOOR  
FINISH PLANS

SHEET:

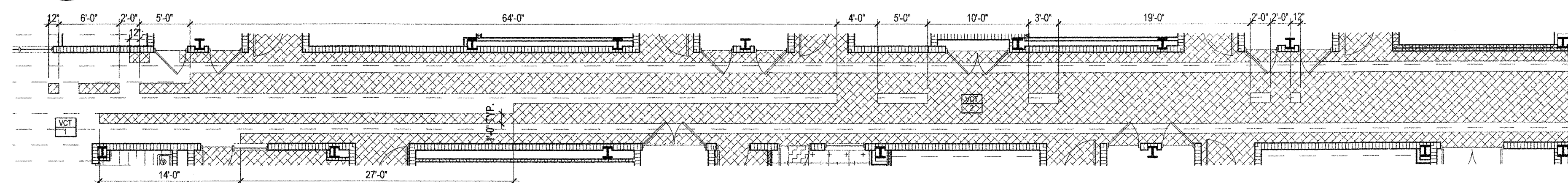
A6.08



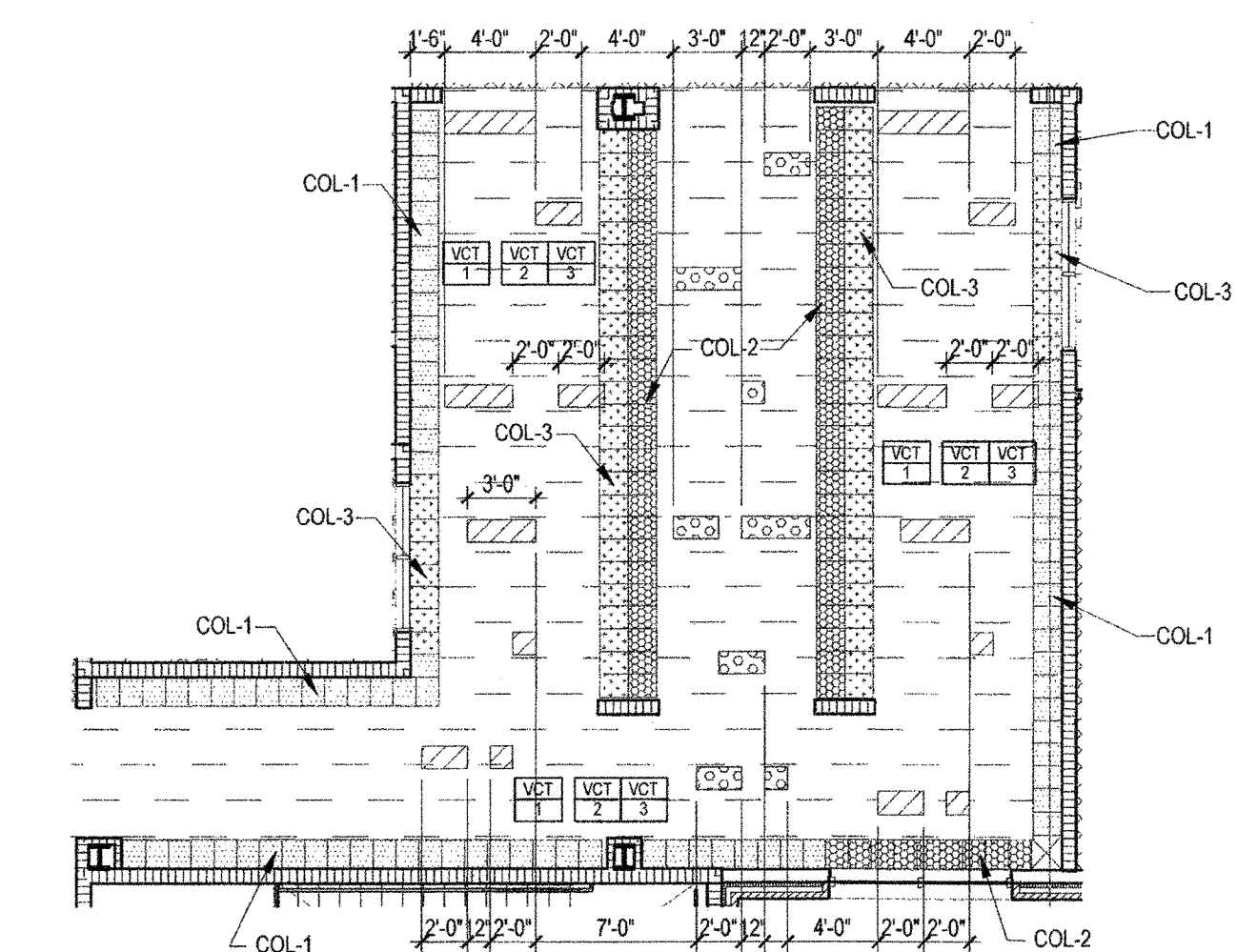
8 TYPICAL 2ND & 3RD FLOOR CORRIDOR  
A6.08 SCALE: 1/8" = 1'-0"



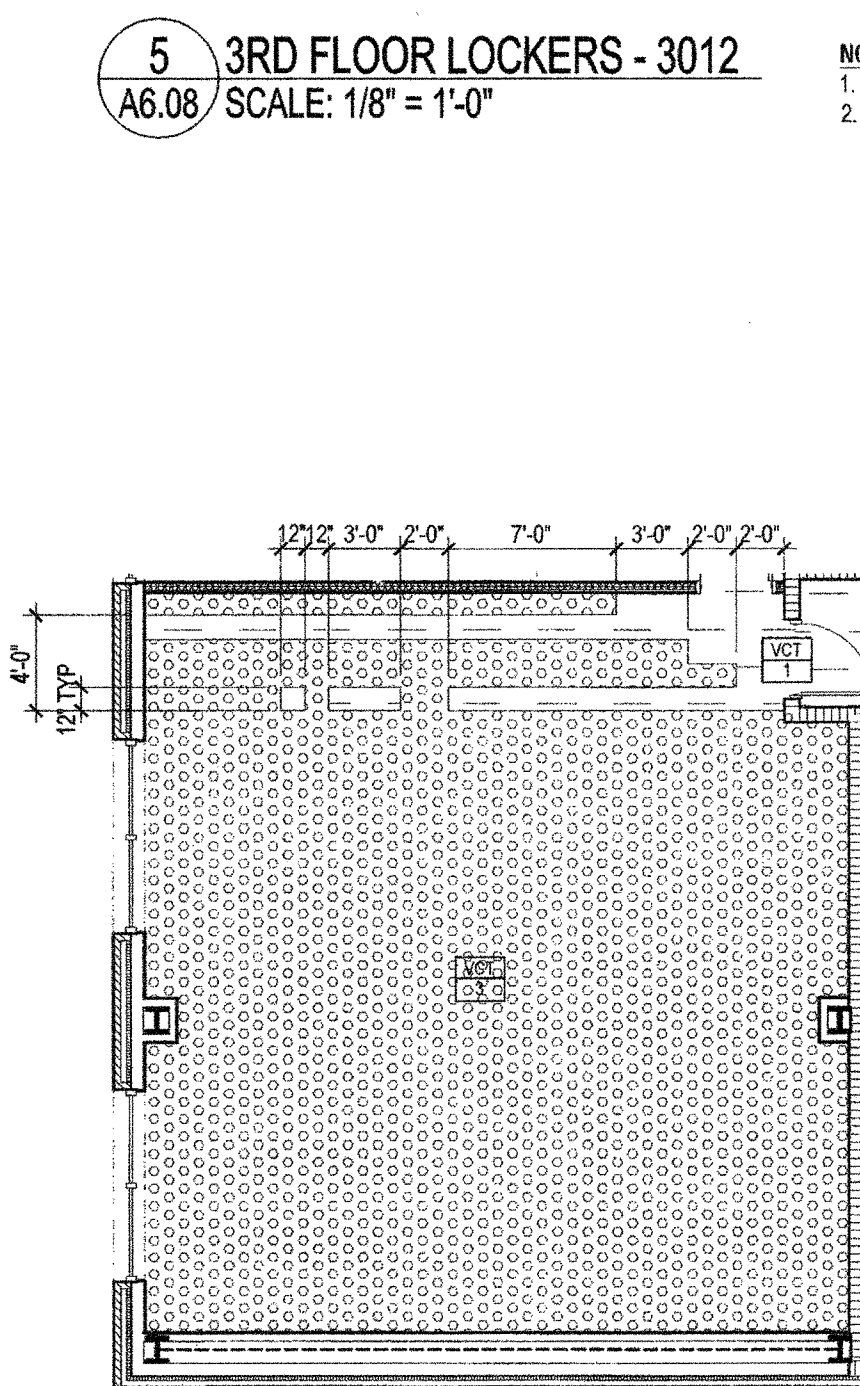
1 TYPICAL ORANGE CORRIDOR @ 2ND & 3RD FLOORS  
A6.08 SCALE: 1/8" = 1'-0"



2 TYPICAL GREEN CORRIDOR @ 2ND & 3RD FLOORS  
A6.08 SCALE: 1/8" = 1'-0"



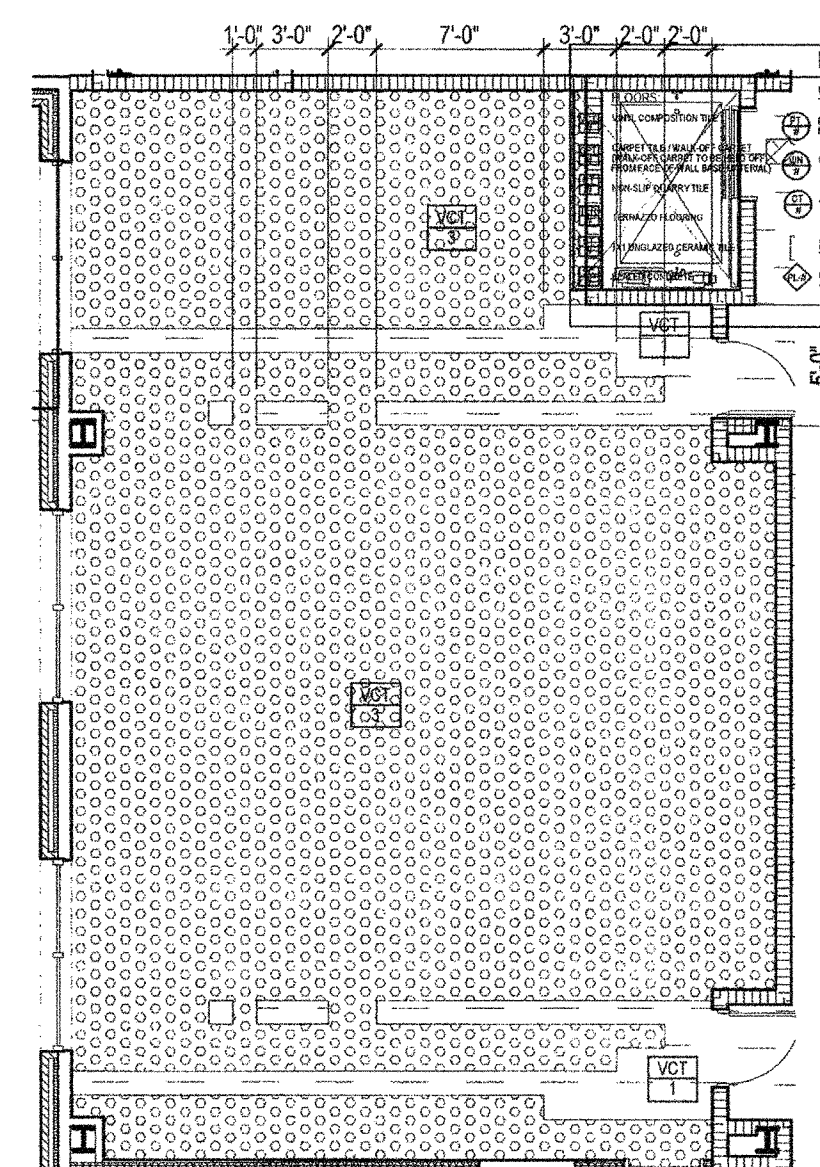
3 OFFICE - 3028  
A6.08 SCALE: 1/8" = 1'-0"



5 3RD FLOOR LOCKERS - 3012  
A6.08 SCALE: 1/8" = 1'-0"

NOTES:  
1. TOP & BOTTOM LOCKERS TO BE SAME COLOR  
2. SOLID SURFACE-01 TO BE OVER TYPE-B  
LOCKERS @ WINDOWS

4 OFFICE - 3010  
A6.08 SCALE: 1/8" = 1'-0"



6 SCIENCE LAB- 3025  
A6.08 SCALE: 1/8" = 1'-0"

7 SCIENCE CLASSROOM- 3029  
A6.08 SCALE: 1/8" = 1'-0"

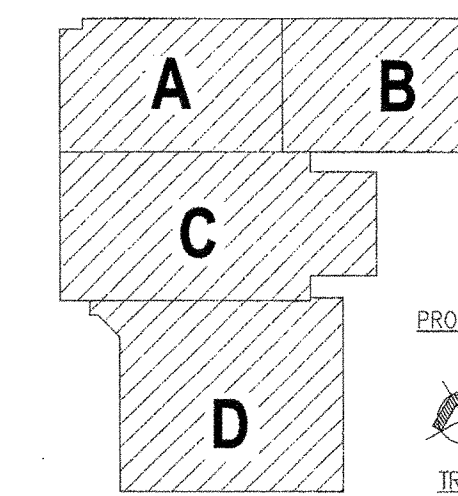
FLOOR FINISH LEGEND	
[Pattern]	TER-1
[Pattern]	TER-2
[Pattern]	TER-3
[Pattern]	TER-4
[Pattern]	VCT-1
[Pattern]	VCT-2
[Pattern]	VCT-3
[Pattern]	CT-1
[Pattern]	CT-2
[Pattern]	CT-3
[Pattern]	CPT-1
[Pattern]	CPT-2
[Pattern]	CPT-3
[Pattern]	CPT-4
[Pattern]	CPT-5
[Pattern]	CPT-6
[Pattern]	CPT-7
[Pattern]	RUB-1
[Pattern]	RUB-2
[Pattern]	RUB-3
[Pattern]	LIN-1

LOCKER COLOR LEGEND	
[Pattern]	COL-1
[Pattern]	COL-2
[Pattern]	COL-3

FINISH LEGEND		
<b>FLOORS:</b>	<b>WALLS:</b>	<b>BASE:</b>
[Symbol] VINYL COMPOSITION TILE	[Symbol] FINISHED VERTICAL/HORIZONTAL SURFACE UNLESS NOTED OTHERWISE (METAL, OR WOOD SURFACES)	[Symbol] 6" H TERRAZZO BASE
[Symbol] CARPET TILE / WALL CURE CARPET	[Symbol] VINYL WALLCOVERINGS	[Symbol] 5/8" QUARRY TILE BASE
[Symbol] NON-SLIP QUARRY TILE	[Symbol] 6"x4" CERAMIC WALL TILE, GLAZED	[Symbol] 4"x4" GLAZED CERAMIC TILE COVER BASE
[Symbol] TERRAZZO FLOORING	<b>EQUIPMENT CABINETS:</b>	[Symbol] RUBBER BASE
[Symbol] 18"x18" GLAZED CERAMIC TILE	[Symbol] PLASTIC LAMINATE (COUNTER/CABINETS)	
[Symbol] SEALED CONCRETE		

**GENERAL NOTES**

- ALL MECHANICAL AND ELECTRICAL ROOMS SHALL BE UNFINISHED.
- ALL AREAS WITH CERAMIC TILE FLOORS: WALLS SHALL HAVE CERAMIC TILE LOCATIONS OF THE SAME SIZE AND FINISH AS THE CERAMIC WALL TILES.
- ALL LOCKERS/AREAS WITH CERAMIC TILE: WALLS AND FLOORS SHALL HAVE MATCHING CERAMIC TILE LOCATIONS OF THE SAME SIZE AND FINISH AS THE CERAMIC WALL TILES.
- PROVIDE METAL TRANSITION STRIPS UNDER LOCKERS AT ROOMS THAT DO NOT HAVE CERAMIC TILE.
- ALL QUARRY AND CERAMIC TILE AT RESTROOMS AND FOOD SERVICE AREAS TO HAVE 100% SPOON GROUT. CONVENTIONAL GROUT AT ALL OTHER AREAS.
- SEALED CONCRETE AT OUTLET FREEZER LOCATION IS A BASE FOR PRE-FABRICATED UNIT FLOORING. SEE STRUCTURAL DRAWINGS FOR KITCHEN.
- FINISHES SHOWN IN ONE AREA OF A ROOM OR CORRIDOR SHALL APPLY TO THE ENTIRE ROOM UNLESS OTHERWISE NOTED.
- FIELD CARPET TILES (OPT 1, 2, 3) ARE TO BE INSTALLED MONOCOLORALLY WITH THE LINEAR PATTERN RUNNING PARALLEL WITH THE DIRECTION OF THE SOLID COLOR CARPET TILE ACCESS (OPT 4 & 5).
- ALL SOLID COLORED CARPET TILES (OPT 4 & 5) ARE TO BE INSTALLED QUARTER TURNED.
- REFRESHED SLABS ARE DIMENSIONED FROM INSIDE WALL TO INSIDE WALL WITH ALL CMU WALL COLORING STARTING AT FINISH FLOOR. POURED STEM WALLS OR CUT CALL ARE ACCEPTABLE SPACES. REFER TO STRUCTURAL DRAWINGS FOR ADDITIONAL INFORMATION. FIELD VERIFY ALL DIMENSIONS.
- ALL INTERIOR WALL PAINT SHALL BE AN EGGSHELL FINISH UNLESS NOTED OTHERWISE.
- ALL CLASSROOM DOOR ENTANCES ALCOVES TO BE PAINTED - PTG 4 OR 5. REFER TO FINISH PLANS DIMENSIONS.
- RETURN TERRAZZO BASE AND ALL WALL BASE INTO DOOR OPENINGS / FRAMES.
- ALL TRANSITIONS FROM TILE, TERRAZZO, QUARRY TILE AND CONCRETE FLOORING TO EACH OTHER AND TO OTHER FLOORING FINISH MATERIALS SHALL BE MADE LEVEL BY REBARBERING GROUT. RED, NON-LEVEL FINISHED SURFACES WILL NOT BE ACCEPTED.



KEY PLAN