



NEW 3 SECTION ELEMENTARY SCHOOL
AT FISK-HOWARD SCHOOL
RECOVERY SCHOOL DISTRICT
NEW ORLEANS, LOUISIANA 70119
211 S. LOPEZ STREET

DATE ISSUED: 7 DECEMBER, 2012
REVISED:
REVISED:
REVISED:
REVISED:
DRAWN BY: MKS
CHECKED BY:
PHASE:

BID DOCUMENTS

11085

TITLE:
UNIT A FIRST FLOOR
REFLECTED CEILING

SHEET:

A7.01

ROOM LEGEND		UNIT A 1ST FLOOR	
ROOM NO.	ROOM NAME	AREA	CLNG HT
1011	SPECIAL NEEDS CLASSROOM	846 SF	10'-0"
1013	CHANGING ROOM	147 SF	10'-0"
1013A	RESTROOM	97 SF	10'-0"
1015	RECEPTION	484 SF	10'-0"
1016	SPEECH	205 SF	10'-0"
1017	PRINCIPAL (OFFICE C)	200 SF	10'-0"
1018	OP/PT	209 SF	10'-0"
1018A	STORAGE	91 SF	10'-0"
1019	S.R.T.	100 SF	10'-0"
1020	FACULTY/LOUNGE	491 SF	10'-0"
1021	CONFERENCE	300 SF	10'-0"
1023	S.R.T.	93 SF	10'-0"
1024	RESTROOM	65 SF	10'-0"
1025	WOMEN	67 SF	10'-0"
1026	OFFICE A	141 SF	10'-0"
1027	MEN	68 SF	10'-0"
1028	OFFICE A	144 SF	10'-0"
1029	OFFICE A	170 SF	10'-0"
1030	HEALTH CLINIC	205 SF	10'-0"
1030A	COT/EXAM RM	60 SF	10'-0"
1030B	RESTROOM	60 SF	10'-0"
1030C	STORAGE	75 SF	10'-0"
1030D	COT/EXAM RM	60 SF	10'-0"
1031	CUSTODIAL	37 SF	EXPOSED
1033	BOYS RESTROOM	215 SF	10'-0"
1035	GIRLS RESTROOM	215 SF	10'-0"
1037A	SOUND	40 SF	10'-0"
1037B	STORAGE	280 SF	10'-0"
1037C	ELEVATOR EQUIPMENT	51 SF	10'-0"
1047F	STORAGE	78 SF	10'-0"
C1000	VESTIBULE	160 SF	10'-0"
C1001	CORRIDOR	1402 SF	12'-0"
C1001A	CORRIDOR	321 SF	10'-0"
C1001B	CORRIDOR	107 SF	10'-0"
C1002	CORRIDOR	119 SF	10'-0"
E1014	ELECTRICAL	181 SF	10'-0"
M1020	MECHANICAL	16 SF	EXPOSED
M1022	MECHANICAL	171 SF	EXPOSED
S102	STAIR	324 SF	VARIES
T1012	TECHNOLOGY	76 SF	10'-0"

GENERAL NOTES

A. THE ARCHITECTURAL REFLECTED CEILING PLANS GOVERN THE LAYOUT OF ALL CEILING ELEMENTS/PENETRATIONS.

B. REFER TO MASTER PLANS/CODE PLANS FOR THE LOCATION OF RATED WALL CONSTRUCTION AND WALLS THAT EXTEND TO ROOF DECK OR FLOOR STRUCTURE ABOVE.

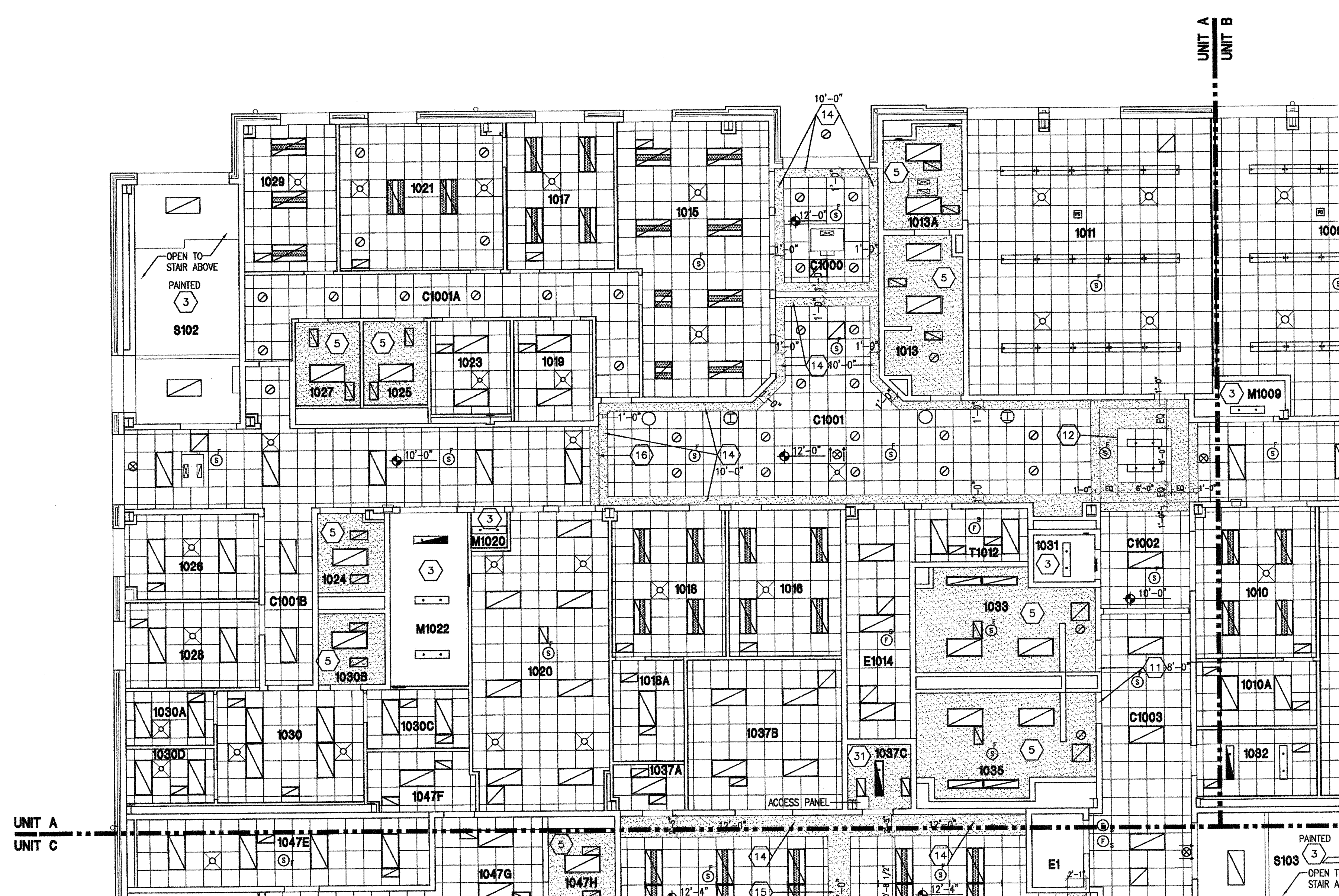
C. REFER TO ROOM FINISH SCHEDULE FOR SPECIFIC CEILING TYPES.

D. BULKHEAD FRAMING SHALL BE ATTACHED TO STRUCTURAL FRAMING AND NOT TO ROOF DECK.

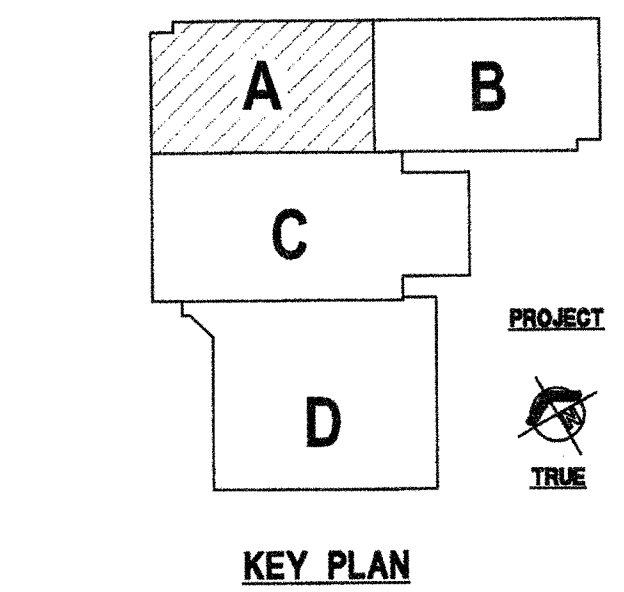
E. PROVIDE REVEAL DRYWALL TRIM AT ALL LOCATIONS WHERE GYPSUM WALL BOARD (GWB) ABUTS A DISSIMILAR MATERIAL TYPICAL UNLESS NOTED OTHERWISE. REFER TO DETAIL 1-A7.12.

- REFLECTED CEILING PLAN LEGEND**
- 2x4 OR 2x2 ACOUSTICAL CEILING - REFER TO ROOM FINISH SCHEDULE FOR TYPE
 - LIGHT FIXTURE - REFER TO ELECTRICAL DRAWINGS
 - LIGHT FIXTURE - REFER TO ELECTRICAL DRAWINGS
 - LIGHT FIXTURE - REFER TO ELECTRICAL DRAWINGS
 - DIFFUSER - REFER TO MECHANICAL DRAWINGS
 - DIFFUSER - REFER TO MECHANICAL DRAWINGS
 - RETURN AIR GRILL - REFER TO MECHANICAL DRAWINGS
 - SPEAKER - REFER TO ELECTRICAL DRAWINGS
 - OCCUPANCY SENSOR - REFER TO ELECTRICAL DRAWINGS
 - SMOKE DETECTOR - REFER TO ELECTRICAL DRAWINGS
 - HEAT DETECTOR - REFER TO ELECTRICAL DRAWINGS
 - CEILING MOUNTED EXIT LIGHT
 - CEILING MOUNTED PROJECTOR - COORDINATE INSTALLATION OF VIDEO PROJECTOR WITH TECHNOLOGY CONTRACTOR
 - CEILING MOUNTED WIRELESS ACCESS POINT
 - CEILING MOUNTED INTERCOMMUNICATIONS LOUDSPEAKER
 - CEILING MOUNTED SPECIALTY SOUND REINFORCEMENT SPEAKER
 - CEILING MOUNTED MICROPHONE
 - CEILING MOUNTED VIDEO SURVEILLANCE CAMERA
 - CEILING MOUNTED MOTION DETECTOR
 - CEILING MOUNTED DOOR ACCESS CONTROLLER JUNCTION BOX
 - CABINET HEATER - REFER TO MECHANICAL DRAWINGS
 - INDICATES GWB BULKHEAD/CEILING
 - INDICATES PLASTER CEILING/SOFFIT
 - INDICATES PROJECTION SCREEN - REFER TO EQUIPMENT DRAWINGS
 - 2" SOFFIT VENT (CONT). TERMINATE 8" FROM FACE OF WALL CONSTRUCTION

- REFLECTED PLAN KEY NOTES**
1. REFER TO SECOND FLOOR FOR CEILING.
 2. SLOPED GLAZING SKYLIGHT - REFER TO ROOF PLAN AND WALL SECTIONS.
 3. EXPOSED STRUCTURE IN THIS ROOM.
 4. NO NEW CEILING FINISH REQUIRED AT FREEZER/COOLER AREA.
 5. 5/8" GWB CEILING ON 3 5/8" STEEL STUDS AT 16" O.C. SUSPEND FROM STRUCTURE AS REQUIRED.
 6. LINE INDICATES CANOPY AND STRUCTURE REFER TO SITE PLAN CANOPY DRAWINGS.
 7. TUBULAR DAYLIGHTING DIFFUSER - REFER TO ROOF PLAN AND PROJECT MANUAL.
 8. SUSPENDED PLASTER SOFFIT - 3/4" PORTLAND CEMENT STUCCO ON METAL LATH ON RUNNERS SUSPENDED FROM STRUCTURE ABOVE. HEIGHT AS INDICATED.
 9. CONTROL JOINT AT SUSPENDED PLASTER SOFFIT REFER TO PROJECT MANUAL.
 10. CONTINUOUS EXPANSION JOINT AT CEILING - SEE DETAIL 2-A7.13.
 11. CMU LINTEL (PAINT) BOTTOM OF LINTEL HEIGHT AS INDICATED - REFER TO STRUCTURAL DRAWINGS.
 12. LUMINOUS CEILING SYSTEM AND GWB BULKHEAD REFER TO PROJECT MANUAL AND DETAIL 10-A7.12.
 13. ACRYLIC EGGRATE CEILING AT DISPLAY CASE REFER TO DETAIL 7-A1.64.
 14. GWB BULKHEAD - REFER TO DETAIL 2-A7.12.
 15. GWB BULKHEAD - REFER TO DETAIL 3-A7.12.
 16. GWB BULKHEAD - REFER TO DETAIL 4-A7.12.
 17. GWB BULKHEAD - REFER TO DETAIL 5-A7.12.
 18. GWB BULKHEAD - REFER TO DETAIL 6-A7.12.
 19. GWB BULKHEAD - REFER TO DETAIL 7-A7.12.
 20. GWB BULKHEAD - REFER TO DETAIL 8-A7.12.
 21. GWB BULKHEAD - REFER TO DETAIL 9-A7.12.
 22. GWB BULKHEAD - REFER TO DETAIL 11-A7.12.
 23. GWB BULKHEAD - REFER TO DETAIL 12-A7.12.
 24. GWB BULKHEAD - REFER TO DETAIL 13-A7.12.
 25. FORWARD FOLDING BASKETBALL BACKSTOP REFER TO EQUIPMENT DRAWINGS.
 26. GYMNASIUM DIVIDER CURTAIN - REFER TO EQUIPMENT DRAWINGS.
 27. OPERABLE PARTITION WALL - REFER TO PROJECT MANUAL AND DETAIL 1-A7.13.
 28. SUSPENDED ACOUSTICAL CEILING. HEIGHT AS INDICATED - PROVIDE 8" SUSPENSION (PERIMETER) TRIM AROUND EACH SUSPENDED GROUPING OF PANELS. PROVIDE 6" ACOUSTICAL INSULATION LAYING ON TOP OF PANELS AND EXTENDING TO PERIMETER TRIM.
 29. COORDINATE CEILING TERMINATION WITH COOLER/FREEZER CONTR.
 30. GWB BULKHEAD - REFER TO DETAIL 3-A7.13
 31. PROVIDE 1 HOUR RATED CEILING IN THIS ROOM. (2) LAYERS OF 5/8" TYPE "X" GWB CEILING ON 6" STEEL STUDS AT 16" O.C. AND SECURED TO WALLS AS REQUIRED.



1 UNIT A - FIRST FLOOR REFLECTED CEILING PLAN
A7.01 SCALE: 1/8" = 1'-0"



VERIFICATION NOTE

CONTRACTOR SHALL VERIFY ALL DIMENSIONS AND CLEARANCES AND ALL EXISTING FIELD CONDITIONS BEFORE STARTING CONSTRUCTION. COMMENCEMENT OF WORK CONSTITUTES ACCEPTANCE OF CONDITIONS.

SHOULD DIFFERENT CONDITIONS BE ENCOUNTERED, CONTACT THE ARCHITECT BEFORE PROCEEDING WITH WORK.