



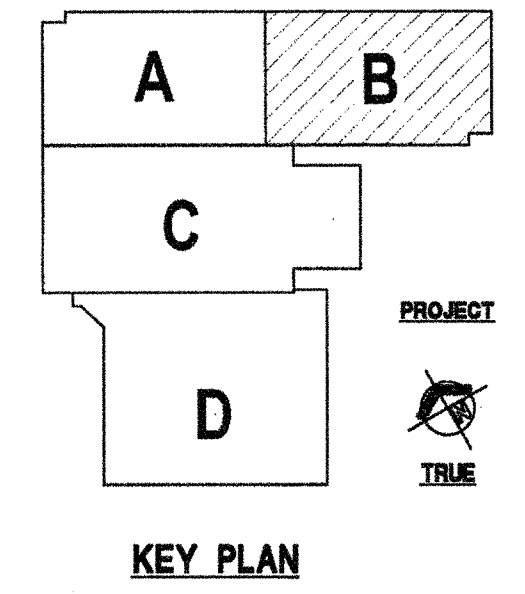
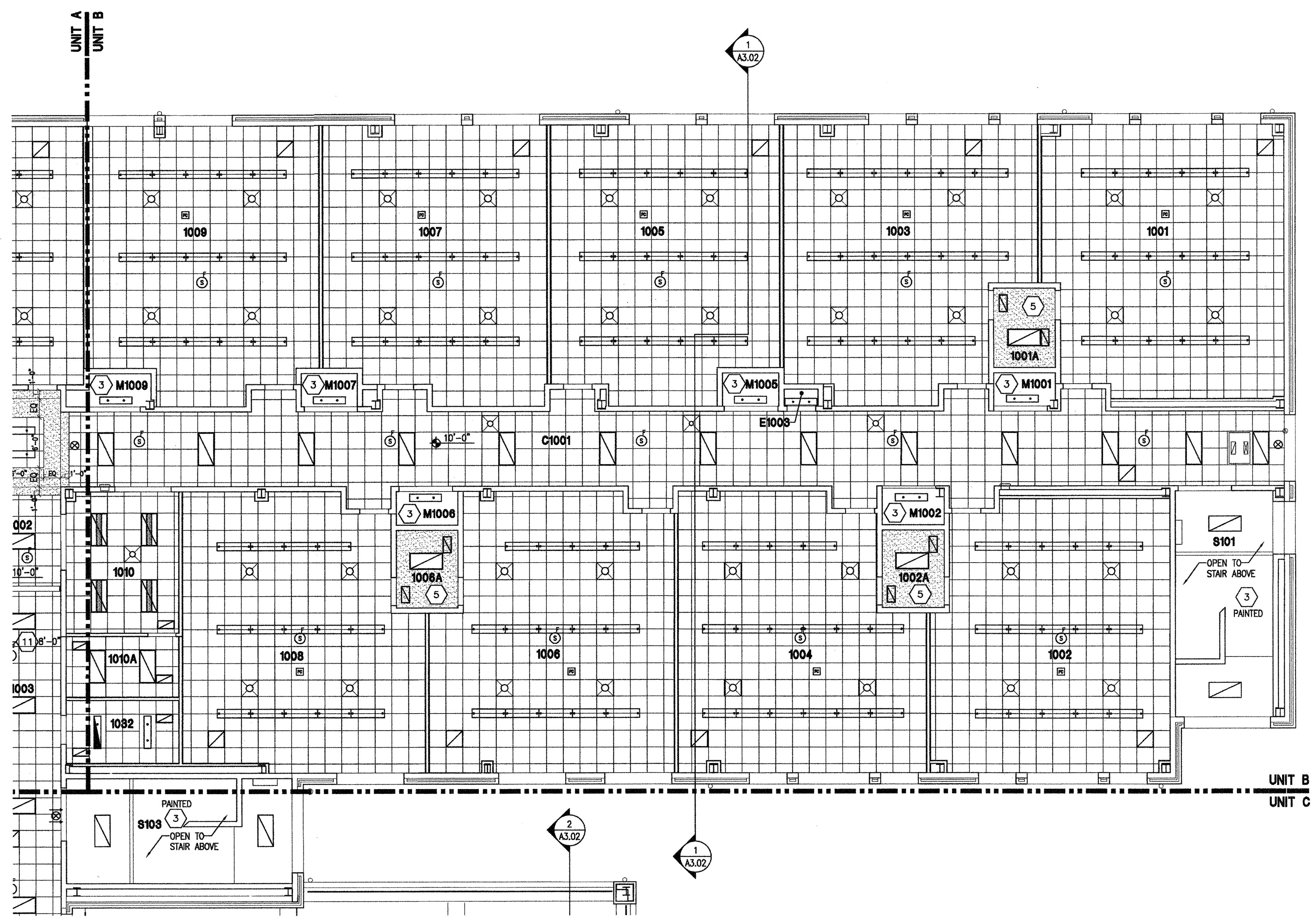
**NEW 3 SECTION ELEMENTARY SCHOOL
AT FISK-HOWARD SCHOOL
RECOVERY SCHOOL DISTRICT**
NEW ORLEANS, LOUISIANA 70119
211 SLOPEZ STREET

ROOM LEGEND		UNIT B 1ST FLOOR	
ROOM NO.	ROOM NAME	AREA	CLNG HT
1001	KINDERGARTEN CLASSROOM	902 SF	10'-0"
1001A	RESTROOM	69 SF	10'-0"
1002	KINDERGARTEN CLASSROOM	892 SF	10'-0"
1002A	RESTROOM	69 SF	10'-0"
1003	KINDERGARTEN CLASSROOM	900 SF	10'-0"
1004	PRE-K CLASSROOM	891 SF	10'-0"
1005	GRADE 1 CLASSROOM	863 SF	10'-0"
1006	PRE-K CLASSROOM	905 SF	10'-0"
1006A	RESTROOM	69 SF	10'-0"
1007	GRADE 1 CLASSROOM	854 SF	10'-0"
1008	PRE-K CLASSROOM	887 SF	10'-0"
1009	GRADE 1 CLASSROOM	863 SF	10'-0"
1010	TEACHER CENTER	228 SF	10'-0"
1010A	STORAGE	98 SF	10'-0"
1032	BUILDING SUPPORT	100 SF	10'-0"
C1001	CORRIDOR	1444 SF	10'-0"
E1003	ELEC	8 SF	EXPOSED
M1001	MECHANICAL	30 SF	EXPOSED
M1002	MECHANICAL	30 SF	EXPOSED
M1005	MECHANICAL	27 SF	EXPOSED
M1006	MECHANICAL	30 SF	EXPOSED
M1007	MECHANICAL	27 SF	EXPOSED
M1009	MECHANICAL	36 SF	EXPOSED
S101	STAIR	324 SF	VARIES

- GENERAL NOTES**
- THE ARCHITECTURAL REFLECTED CEILING PLANS GOVERN THE LAYOUT OF ALL CEILING ELEMENTS/PENETRATIONS.
 - REFER TO MASTER PLANS/CODE PLANS FOR THE LOCATION OF RATED WALL CONSTRUCTION AND WALLS THAT EXTEND TO ROOF DECK OR FLOOR STRUCTURE ABOVE. REFER TO ROOM FINISH SCHEDULE FOR SPECIFIC CEILING TYPES.
 - BULKHEAD FRAMING SHALL BE ATTACHED TO STRUCTURAL FRAMING AND NOT TO ROOF DECK. PROVIDE REVEAL DRYWALL TRIM AT ALL LOCATIONS WHERE GYPSUM WALL BOARD (GWB) ABUTS A DISSIMILAR MATERIAL. TYPICAL UNLESS NOTED OTHERWISE. REFER TO DETAIL 1-A7.12.

- REFLECTED CEILING PLAN LEGEND**
- 2x4 OR 2x2 ACOUSTICAL CEILING - REFER TO ROOM FINISH SCHEDULE FOR TYPE
 - LIGHT FIXTURE - REFER TO ELECTRICAL DRAWINGS
 - DIFFUSER - REFER TO MECHANICAL DRAWINGS
 - RETURN AIR GRILL - REFER TO MECHANICAL DRAWINGS
 - SPEAKER - REFER TO ELECTRICAL DRAWINGS
 - OCCUPANCY SENSOR - REFER TO ELECTRICAL DRAWINGS
 - SMOKE DETECTOR - REFER TO ELECTRICAL DRAWINGS
 - HEAT DETECTOR - REFER TO ELECTRICAL DRAWINGS
 - CEILING MOUNTED EXIT LIGHT
 - CEILING MOUNTED PROJECTOR - COORDINATE INSTALLATION OF VIDEO PROJECTOR WITH TECHNOLOGY CONTRACTOR
 - CEILING MOUNTED WIRELESS ACCESS POINT
 - CEILING MOUNTED INTERCOMMUNICATIONS LOUDSPEAKER
 - CEILING MOUNTED SPECIALTY SOUND REINFORCEMENT SPEAKER
 - CEILING MOUNTED MICROPHONE
 - CEILING MOUNTED VIDEO SURVEILLANCE CAMERA
 - CEILING MOUNTED MOTION DETECTOR
 - CEILING MOUNTED DOOR ACCESS CONTROLLER JUNCTION BOX
 - CABINET HEATER - REFER TO MECHANICAL DRAWINGS
 - INDICATES GWB BULKHEAD/CEILING
 - INDICATES PLASTER CEILING/SOFFIT
 - INDICATES PROJECTION SCREEN - REFER TO EQUIPMENT DRAWINGS
 - 2" SOFFIT VENT (CONT), TERMINATE 8" FROM FACE OF WALL CONSTRUCTION

- REFLECTED PLAN KEY NOTES**
- REFER TO SECOND FLOOR FOR CEILING.
 - SLOPED GLAZING SKYLIGHT - REFER TO ROOF PLAN AND WALL SECTIONS.
 - EXPOSED STRUCTURE IN THIS ROOM.
 - NO NEW CEILING FINISH REQUIRED AT FREEZER/COOLER AREA.
 - 5/8" GWB CEILING ON 3 5/8" STEEL STUDS AT 16" O.C. SUSPEND FROM STRUCTURE AS REQUIRED.
 - LINE INDICATES CANOPY AND STRUCTURE REFER TO SITE PLAN CANOPY DRAWINGS. TUBULAR DAYLIGHTING DIFFUSER - REFER TO ROOF PLAN AND PROJECT MANUAL.
 - SUSPENDED PLASTER SOFFIT - 3/4" PORTLAND CEMENT STUCCO ON METAL LATH ON RUNNERS SUSPENDED FROM STRUCTURE ABOVE. HEIGHT AS INDICATED.
 - CONTROL JOINT AT SUSPENDED PLASTER SOFFIT REFER TO PROJECT MANUAL.
 - CONTINUOUS EXPANSION JOINT AT CEILING - SEE DETAIL 2-A7.13.
 - CMU LINTEL (PAINT) BOTTOM OF LINTEL HEIGHT AS INDICATED - REFER TO STRUCTURAL DRAWINGS.
 - LUMINOUS CEILING SYSTEM AND GWB BULKHEAD REFER TO PROJECT MANUAL AND DETAIL 10-A7.12.
 - ACRYLIC EGGSRADE CEILING AT DISPLAY CASE REFER TO DETAIL 7-A1.64.
 - GWB BULKHEAD - REFER TO DETAIL 2-A7.12.
 - GWB BULKHEAD - REFER TO DETAIL 3-A7.12.
 - GWB BULKHEAD - REFER TO DETAIL 4-A7.12.
 - GWB BULKHEAD - REFER TO DETAIL 5-A7.12.
 - GWB BULKHEAD - REFER TO DETAIL 6-A7.12.
 - GWB BULKHEAD - REFER TO DETAIL 7-A7.12.
 - GWB BULKHEAD - REFER TO DETAIL 8-A7.12.
 - GWB BULKHEAD - REFER TO DETAIL 9-A7.12.
 - GWB BULKHEAD - REFER TO DETAIL 11-A7.12.
 - GWB BULKHEAD - REFER TO DETAIL 12-A7.12.
 - GWB BULKHEAD - REFER TO DETAIL 13-A7.12.
 - FORWARD FOLDING BASKETBALL BACKSTOP REFER TO EQUIPMENT DRAWINGS.
 - GYMNASIUM DIVIDER CURTAIN - REFER TO EQUIPMENT DRAWINGS.
 - OPERABLE PARTITION WALL - REFER TO PROJECT MANUAL AND DETAIL 1-A7.13.
 - SUSPENDED ACOUSTICAL CEILING. HEIGHT AS INDICATED - PROVIDE 8" SUSPENSION (PERIMETER) TRIM AROUND EACH SUSPENDED GROUPING OF PANELS. PROVIDE 6" ACOUSTICAL INSULATION LAYING ON TOP OF PANELS AND EXTENDING TO PERIMETER TRIM.
 - COORDINATE CEILING TERMINATION WITH COOLER/FREEZER CONTR.
 - GWB BULKHEAD - REFER TO DETAIL 3-A7.13
 - PROVIDE 1 HOUR RATED CEILING IN THIS ROOM. (2) LAYERS OF 5/8" TYPE "X" GWB CEILING ON 6" STEEL STUDS AT 16" O.C. AND SECURED TO WALLS AS REQUIRED.



VERIFICATION NOTE
CONTRACTOR SHALL VERIFY ALL DIMENSIONS AND CLEARANCES AND ALL EXISTING FIELD CONDITIONS BEFORE STARTING CONSTRUCTION. COMMENCEMENT OF WORK CONSTITUTES ACCEPTANCE OF CONDITIONS. SHOULD DIFFERENT CONDITIONS BE ENCOUNTERED, CONTACT THE ARCHITECT BEFORE PROCEEDING WITH WORK.

1 UNIT B - FIRST FLOOR REFLECTED CEILING PLAN
A7.02 SCALE: 1/8" = 1'-0"

DATE ISSUED: 7 DECEMBER, 2012
REVISED:
REVISED:
REVISED:
REVISED:
DRAWN BY: MKS
CHECKED BY:
PHASE: BID DOCUMENTS
TITLE: UNIT B FIRST FLOOR REFLECTED CEILING
SHEET: 11085
A7.02