

**NEW 3 SECTION ELEMENTARY SCHOOL
AT FISK-HOWARD SCHOOL
RECOVERY SCHOOL DISTRICT**
NEW ORLEANS, LOUISIANA 70119
211 S. LOPEZ STREET

DATE ISSUED: 7 DECEMBER, 2012
REVISED:
REVISED:
REVISED:
REVISED:
DRAWN BY: MKS
CHECKED BY:
PHASE: **BID DOCUMENTS**

11085
TITLE: **UNIT D FIRST FLOOR REFLECTED CEILING**
SHEET: **A7.04**

ROOM LEGEND		UNIT D 1ST FLOOR	
ROOM NO.	ROOM NAME	AREA	CLNG HT
1034	GYMNASIUM	8613 SF	EXPOSED
1D34A	CHAIR STORAGE	288 SF	10'-0"
1D34B	PE STORAGE	336 SF	10'-0"
1D34C	PLATFORM	651 SF	EXPOSED
1D34D	SOUND	12 SF	10'-0"
1D34E	PE STORAGE	344 SF	10'-0"
1036	PE OFFICE (TYPE A)	115 SF	10'-0"
038	GIRLS LOCKER ROOM	435 SF	10'-0"
040	LAUNDRY	112 SF	10'-0"
042	CUSTODIAL	48 SF	10'-0"
044	BOYS LOCKER ROOM	433 SF	10'-0"
046	PE OFFICE (TYPE A)	119 SF	10'-0"
048	GIRLS RESTROOM	210 SF	10'-0"
050	BOYS RESTROOM	207 SF	10'-0"
052	CONCESSIONS	199 SF	10'-0"
054	FAMILY RESTROOM	73 SF	10'-0"
1D54A	SHOWER	51 SF	10'-0"
C1004	CORRIDOR	784 SF	10'-0"
C1005	CORRIDOR	1252 SF	10'-0"

REFLECTED CEILING PLAN LEGEND

- 2x4 OR 2x2 ACOUSTICAL CEILING - REFER TO ROOM FINISH SCHEDULE FOR TYPE
- LIGHT FIXTURE - REFER TO ELECTRICAL DRAWINGS
- LIGHT FIXTURE - REFER TO ELECTRICAL DRAWINGS
- LIGHT FIXTURE - REFER TO ELECTRICAL DRAWINGS
- DIFFUSER - REFER TO MECHANICAL DRAWINGS
- DIFFUSER - REFER TO MECHANICAL DRAWINGS
- RETURN AIR GRILL - REFER TO MECHANICAL DRAWINGS
- SPEAKER - REFER TO ELECTRICAL DRAWINGS
- OCCUPANCY SENSOR - REFER TO ELECTRICAL DRAWINGS
- SMOKE DETECTOR - REFER TO ELECTRICAL DRAWINGS
- HEAT DETECTOR - REFER TO ELECTRICAL DRAWINGS
- CEILING MOUNTED EXIT LIGHT
- CEILING MOUNTED PROJECTOR - COORDINATE INSTALLATION OF VIDEO PROJECTOR WITH TECHNOLOGY CONTRACTOR
- CEILING MOUNTED WIRELESS ACCESS POINT
- CEILING MOUNTED INTERCOMMUNICATIONS LOUDSPEAKER
- CEILING MOUNTED SPECIALTY SOUND REINFORCEMENT SPEAKER
- CEILING MOUNTED MICROPHONE
- CEILING MOUNTED VIDEO SURVEILLANCE CAMERA
- CEILING MOUNTED MOTION DETECTOR
- CEILING MOUNTED DOOR ACCESS CONTROLLER JUNCTION BOX
- CABINET HEATER - REFER TO MECHANICAL DRAWINGS
- INDICATES GWB BULKHEAD/CEILING
- INDICATES PLASTER CEILING/SOFFIT
- INDICATES PROJECTION SCREEN - REFER TO EQUIPMENT DRAWINGS
- 2" SOFFIT VENT (CONT). TERMINATE 6" FROM FACE OF WALL CONSTRUCTION

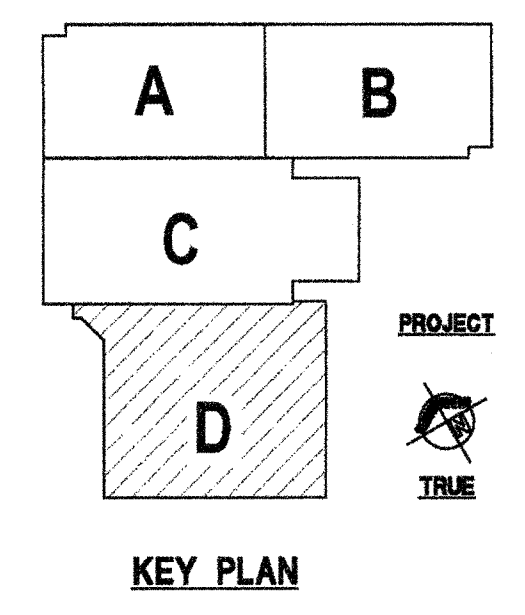
GENERAL NOTES

- A. THE ARCHITECTURAL REFLECTED CEILING PLANS GOVERN THE LAYOUT OF ALL CEILING ELEMENTS/PENETRATIONS.
- B. REFER TO MASTER PLANS/CODE PLANS FOR THE LOCATION OF RATED WALL CONSTRUCTION AND WALLS THAT EXTEND TO ROOF DECK OR FLOOR STRUCTURE ABOVE. REFER TO ROOM FINISH SCHEDULE FOR SPECIFIC CEILING TYPES.
- C. BULKHEAD FRAMING SHALL BE ATTACHED TO STRUCTURAL FRAMING AND NOT TO ROOF DECK. PROVIDE REVEAL DRYWALL TRIM AT ALL LOCATIONS WHERE GYPSUM WALL BOARD (GWB) ABUTS A DISSIMILAR MATERIAL TYPICAL UNLESS NOTED OTHERWISE. REFER TO DETAIL 1-A7.12.

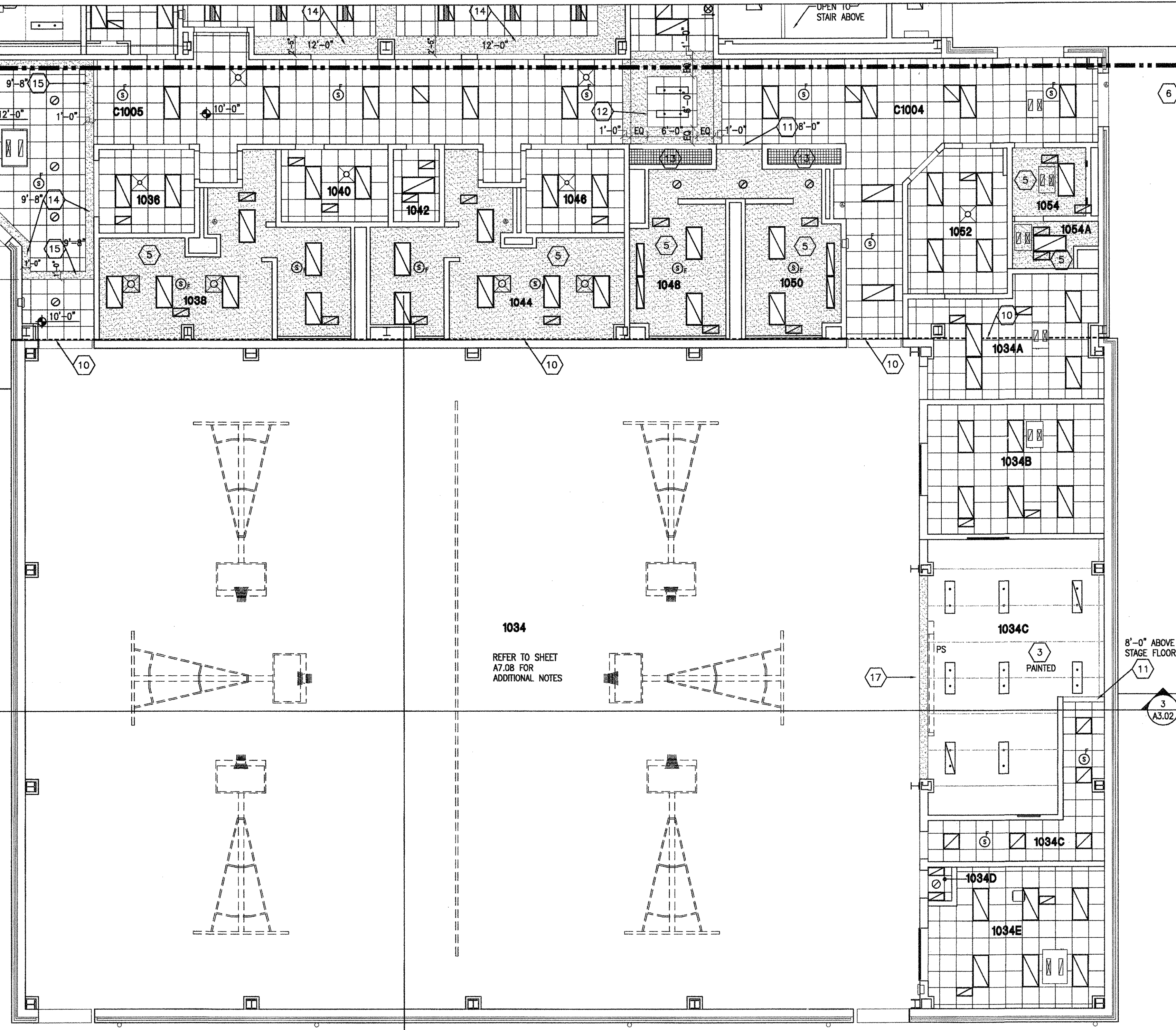
REFLECTED PLAN KEY NOTES

1. REFER TO SECOND FLOOR FOR CEILING.
2. SLOPED GLAZING SKYLIGHT - REFER TO ROOF PLAN AND WALL SECTIONS.
3. EXPOSED STRUCTURE IN THIS ROOM.
4. NO NEW CEILING FINISH REQUIRED AT FREEZER/COOLER AREA.
5. 5/8" GWB CEILING ON 3 5/8" STEEL STUDS AT 16" O.C. SUSPEND FROM STRUCTURE AS REQUIRED.
6. LINE INDICATES CANOPY AND STRUCTURE REFER TO SITE PLAN CANOPY DRAWINGS.
7. TUBULAR DAYLIGHTING DIFFUSER - REFER TO ROOF PLAN AND PROJECT MANUAL.
8. SUSPENDED PLASTER SOFFIT - 3/4" PORTLAND CEMENT STUCCO ON METAL LATH ON RUNNERS SUSPENDED FROM STRUCTURE ABOVE. HEIGHT AS INDICATED.
9. CONTROL JOINT AT SUSPENDED PLASTER SOFFIT REFER TO PROJECT MANUAL.
10. CONTINUOUS EXPANSION JOINT AT CEILING - SEE DETAIL 2-A7.13.
11. CMU LINTEL (PAINT) BOTTOM OF LINTEL HEIGHT AS INDICATED - REFER TO STRUCTURAL DRAWINGS.
12. LUMINOUS CEILING SYSTEM AND GWB BULKHEAD REFER TO PROJECT MANUAL AND DETAIL 10-A7.12.
13. ACRYLIC EGGRATE CEILING AT DISPLAY CASE REFER TO DETAIL 7-A1.64.

14. GWB BULKHEAD - REFER TO DETAIL 2-A7.12.
15. GWB BULKHEAD - REFER TO DETAIL 3-A7.12.
16. GWB BULKHEAD - REFER TO DETAIL 4-A7.12.
17. GWB BULKHEAD - REFER TO DETAIL 5-A7.12.
18. GWB BULKHEAD - REFER TO DETAIL 6-A7.12.
19. GWB BULKHEAD - REFER TO DETAIL 7-A7.12.
20. GWB BULKHEAD - REFER TO DETAIL 8-A7.12.
21. GWB BULKHEAD - REFER TO DETAIL 9-A7.12.
22. GWB BULKHEAD - REFER TO DETAIL 11-A7.12.
23. GWB BULKHEAD - REFER TO DETAIL 12-A7.12.
24. GWB BULKHEAD - REFER TO DETAIL 13-A7.12.
25. FORWARD FOLDING BASKETBALL BACKSTOP REFER TO EQUIPMENT DRAWINGS.
26. GYMNASIUM DIVIDER CURTAIN - REFER TO EQUIPMENT DRAWINGS.
27. OPERABLE PARTITION WALL - REFER TO PROJECT MANUAL AND DETAIL 1-A7.13.
28. SUSPENDED ACOUSTICAL CEILING. HEIGHT AS INDICATED - PROVIDE 6" SUSPENSION (PERIMETER) TRIM AROUND EACH SUSPENDED GROUPING OF PANELS. PROVIDE 6" ACOUSTICAL INSULATION LATHING ON TOP OF PANELS AND EXTENDING TO PERIMETER TRIM.
29. COORDINATE CEILING TERMINATION WITH COOLER/FREEZER CONTR.
30. GWB BULKHEAD - REFER TO DETAIL 3-A7.13.
31. PROVIDED 1 HOUR RATED CEILING IN THIS ROOM. (2) LAYERS OF 5/8" TYPE "X" GWB CEILING ON 6" STEEL STUDS AT 16" O.C. AND SECURED TO WALLS AS REQUIRED.



VERIFICATION NOTE
CONTRACTOR SHALL VERIFY ALL DIMENSIONS AND CLEARANCES AND ALL EXISTING FIELD CONDITIONS BEFORE STARTING CONSTRUCTION. COMMENCEMENT OF WORK CONSTITUTES ACCEPTANCE OF CONDITIONS.
SHOULD DIFFERENT CONDITIONS BE ENCOUNTERED, CONTACT THE ARCHITECT BEFORE PROCEEDING WITH WORK.



1 UNIT D - FIRST FLOOR REFLECTED CEILING PLAN
SCALE: 1/8" = 1'-0"