



**NEW 3 SECTION ELEMENTARY SCHOOL
AT FISK-HOWARD SCHOOL
RECOVERY SCHOOL DISTRICT**
NEW ORLEANS, LOUISIANA 70119
211 SLOPEZ STREET

DATE ISSUED: 7 DECEMBER, 2012
REVISED:
REVISED:
REVISED:
REVISED:
DRAWN BY: MKS
CHECKED BY:
PHASE:

**BID
DOCUMENTS**

11085

TITLE:
**UNIT B THIRD FLOOR
REFLECTED CEILING**

SHEET:

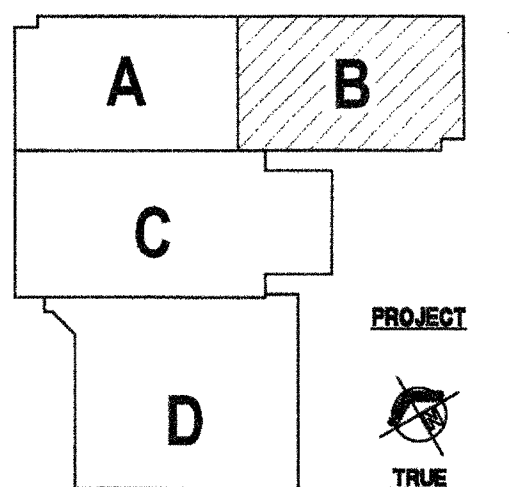
A7.10

ROOM LEGEND		UNIT B 3RD FLOOR	
ROOM NO.	ROOM NAME	AREA	CLING HT
3001	GRADE 6 CLASSROOM	856 SF	10'-0"
3002	GRADE 6 CLASSROOM	855 SF	10'-0"
3003	GRADE 6 CLASSROOM	835 SF	10'-0"
3004	SCIENCE CLASSROOM	945 SF	10'-0"
3005	GRADE 7 CLASSROOM	857 SF	10'-0"
3006	TEACHER CENTER	247 SF	10'-0"
3006A	STORAGE	133 SF	10'-0"
3007	GRADE 7 CLASSROOM	836 SF	10'-0"
3008	SUCCESS CENTER	462 SF	10'-0"
3009	GRADE 7 CLASSROOM	857 SF	10'-0"
3010	OFFICE B	160 SF	10'-0"
3012	LOCKERS	957 SF	10'-0"
3012A	CLOSET	39 SF	10'-0"
3024	MEN	50 SF	10'-0"
3026	WOMEN	54 SF	10'-0"
3028	OFFICE A	121 SF	10'-0"
3028A	CHASE	17 SF	10'-0"
C3001	CORRIDOR	1430 SF	10'-0"
E3004	ELECTRICAL	3 SF	EXPOSED
M3001	MECHANICAL	35 SF	EXPOSED
M3002	MECHANICAL	35 SF	EXPOSED
M3004	MECHANICAL	22 SF	EXPOSED
M3005	MECHANICAL	35 SF	EXPOSED
M3009	MECHANICAL	35 SF	EXPOSED
S301	STAIR	316 SF	10'-0"

- GENERAL NOTES**
- THE ARCHITECTURAL REFLECTED CEILING PLANS GOVERN THE LAYOUT OF ALL CEILING ELEMENTS/PENETRATIONS.
 - REFER TO MASTER PLANS/CODE PLANS FOR THE LOCATION OF RATED WALL CONSTRUCTION AND WALLS THAT EXTEND TO ROOF DECK OR FLOOR STRUCTURE ABOVE.
 - REFER TO ROOM FINISH SCHEDULE FOR SPECIFIC CEILING TYPES.
 - BULKHEAD FRAMING SHALL BE ATTACHED TO STRUCTURAL FRAMING AND NOT TO ROOF DECK. PROVIDE REVEAL DRYWALL TRIM AT ALL LOCATIONS WHERE GYPSUM WALL BOARD (GWB) ABUTS A DISSIMILAR MATERIAL. TYPICAL UNLESS NOTED OTHERWISE. REFER TO DETAIL 1-A7.12.

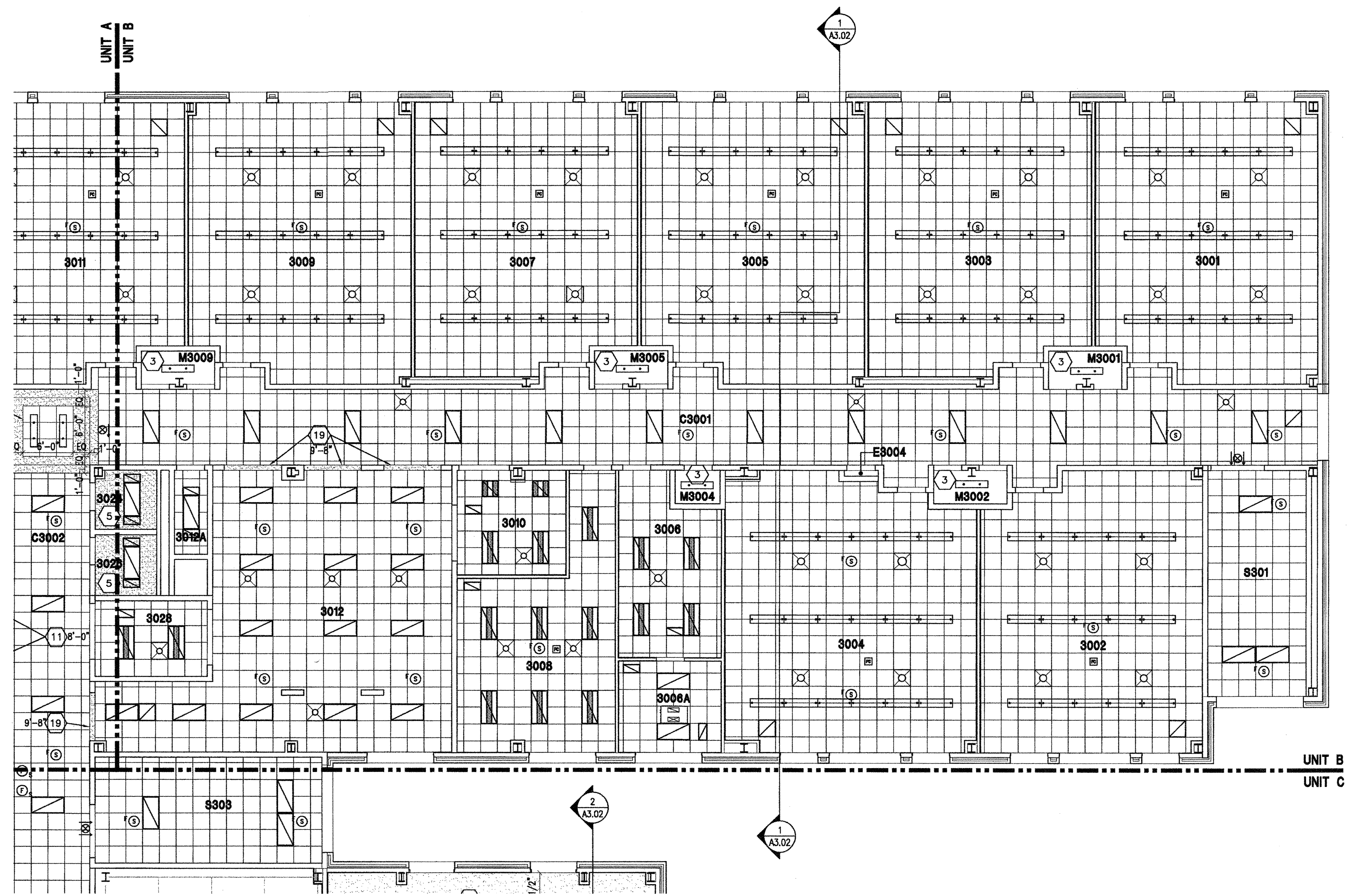
- REFLECTED CEILING PLAN LEGEND**
- 2x4 OR 2x2 ACOUSTICAL CEILING - REFER TO ROOM FINISH SCHEDULE FOR TYPE
 - LIGHT FIXTURE - REFER TO ELECTRICAL DRAWINGS
 - LIGHT FIXTURE - REFER TO ELECTRICAL DRAWINGS
 - LIGHT FIXTURE - REFER TO ELECTRICAL DRAWINGS
 - DIFFUSER - REFER TO MECHANICAL DRAWINGS
 - DIFFUSER - REFER TO MECHANICAL DRAWINGS
 - RETURN AIR GRILL - REFER TO MECHANICAL DRAWINGS
 - SPEAKER - REFER TO ELECTRICAL DRAWINGS
 - OCCUPANCY SENSOR - REFER TO ELECTRICAL DRAWINGS
 - SMOKE DETECTOR - REFER TO ELECTRICAL DRAWINGS
 - HEAT DETECTOR - REFER TO ELECTRICAL DRAWINGS
 - CEILING MOUNTED EXIT LIGHT
 - CEILING MOUNTED PROJECTOR - COORDINATE INSTALLATION OF VIDEO PROJECTOR WITH TECHNOLOGY CONTRACTOR
 - CEILING MOUNTED WIRELESS ACCESS POINT
 - CEILING MOUNTED INTERCOMMUNICATIONS LOUDSPEAKER
 - CEILING MOUNTED SPECIALTY SOUND REINFORCEMENT SPEAKER
 - CEILING MOUNTED MICROPHONE
 - CEILING MOUNTED VIDEO SURVEILLANCE CAMERA
 - CEILING MOUNTED MOTION DETECTOR
 - CEILING MOUNTED DOOR ACCESS CONTROLLER JUNCTION BOX
 - CABINET HEATER - REFER TO MECHANICAL DRAWINGS
 - INDICATES GWB BULKHEAD/CEILING
 - INDICATES PLASTER CEILING/SOFFIT
 - INDICATES PROJECTION SCREEN - REFER TO EQUIPMENT DRAWINGS
 - 2" SOFFIT VENT (CONT), TERMINATE 8" FROM FACE OF WALL CONSTRUCTION

- REFLECTED PLAN KEY NOTES**
- REFER TO SECOND FLOOR FOR CEILING.
 - SLOPED GLAZING SKYLIGHT - REFER TO ROOF PLAN AND WALL SECTIONS.
 - EXPOSED STRUCTURE IN THIS ROOM.
 - NO NEW CEILING FINISH REQUIRED AT FREEZER/COOLER AREA.
 - 5/8" GWB CEILING ON 3 5/8" STEEL STUDS AT 16" O.C. SUSPEND FROM STRUCTURE AS REQUIRED.
 - LINE INDICATES CANOPY AND STRUCTURE REFER TO SITE PLAN CANOPY DRAWINGS. TUBULAR DAYLIGHTING DIFFUSER - REFER TO ROOF PLAN AND PROJECT MANUAL.
 - SUSPENDED PLASTER SOFFIT - 3/4" PORTLAND CEMENT STUCCO ON METAL LATH ON RUNNERS SUSPENDED FROM STRUCTURE ABOVE. HEIGHT AS INDICATED.
 - CONTROL JOINT AT SUSPENDED PLASTER SOFFIT REFER TO PROJECT MANUAL.
 - CONTINUOUS EXPANSION JOINT AT CEILING - SEE DETAIL 2-A7.13.
 - CMU LINTEL (PAINT) BOTTOM OF LINTEL HEIGHT AS INDICATED - REFER TO STRUCTURAL DRAWINGS.
 - LUMINOUS CEILING SYSTEM AND GWB BULKHEAD REFER TO PROJECT MANUAL AND DETAIL 10-A7.12.
 - ACRYLIC EGGRATE CEILING AT DISPLAY CASE REFER TO DETAIL 7-A1.64.
 - GWB BULKHEAD - REFER TO DETAIL 2-A7.12.
 - GWB BULKHEAD - REFER TO DETAIL 3-A7.12.
 - GWB BULKHEAD - REFER TO DETAIL 4-A7.12.
 - GWB BULKHEAD - REFER TO DETAIL 5-A7.12.
 - GWB BULKHEAD - REFER TO DETAIL 6-A7.12.
 - GWB BULKHEAD - REFER TO DETAIL 7-A7.12.
 - GWB BULKHEAD - REFER TO DETAIL 8-A7.12.
 - GWB BULKHEAD - REFER TO DETAIL 9-A7.12.
 - GWB BULKHEAD - REFER TO DETAIL 11-A7.12.
 - GWB BULKHEAD - REFER TO DETAIL 12-A7.12.
 - GWB BULKHEAD - REFER TO DETAIL 13-A7.12.
 - FORWARD FOLDING BASKETBALL BACKSTOP REFER TO EQUIPMENT DRAWINGS.
 - GYMNASIUM DIVIDER CURTAIN - REFER TO EQUIPMENT DRAWINGS.
 - OPERABLE PARTITION WALL - REFER TO PROJECT MANUAL AND DETAIL 1-A7.13.
 - SUSPENDED ACOUSTICAL CEILING. HEIGHT AS INDICATED - PROVIDE 8" SUSPENSION (PERIMETER) TRIM AROUND EACH SUSPENDED GROUPING OF PANELS. PROVIDE 6" ACOUSTICAL INSULATION LAYING ON TOP OF PANELS AND EXTENDING TO PERIMETER TRIM. COORDINATE CEILING TERMINATION WITH COOLER/FREEZER CONTR.
 - GWB BULKHEAD - REFER TO DETAIL 3-A7.13.
 - PROVIDE 1 HOUR RATED CEILING IN THIS ROOM.
 - (2) LAYERS OF 5/8" TYPE "X" GWB CEILING ON 6" STEEL STUDS AT 16" O.C. AND SECURED TO WALLS AS REQUIRED.



KEY PLAN

VERIFICATION NOTE
CONTRACTOR SHALL VERIFY ALL DIMENSIONS AND CLEARANCES AND ALL EXISTING FIELD CONDITIONS BEFORE STARTING CONSTRUCTION. COMMENCEMENT OF WORK CONSTITUTES ACCEPTANCE OF CONDITIONS. SHOULD DIFFERENT CONDITIONS BE ENCOUNTERED, CONTACT THE ARCHITECT BEFORE PROCEEDING WITH WORK.



1 UNIT B - THIRD FLOOR REFLECTED CEILING PLAN
A7.10 SCALE: 1/8" = 1'-0"