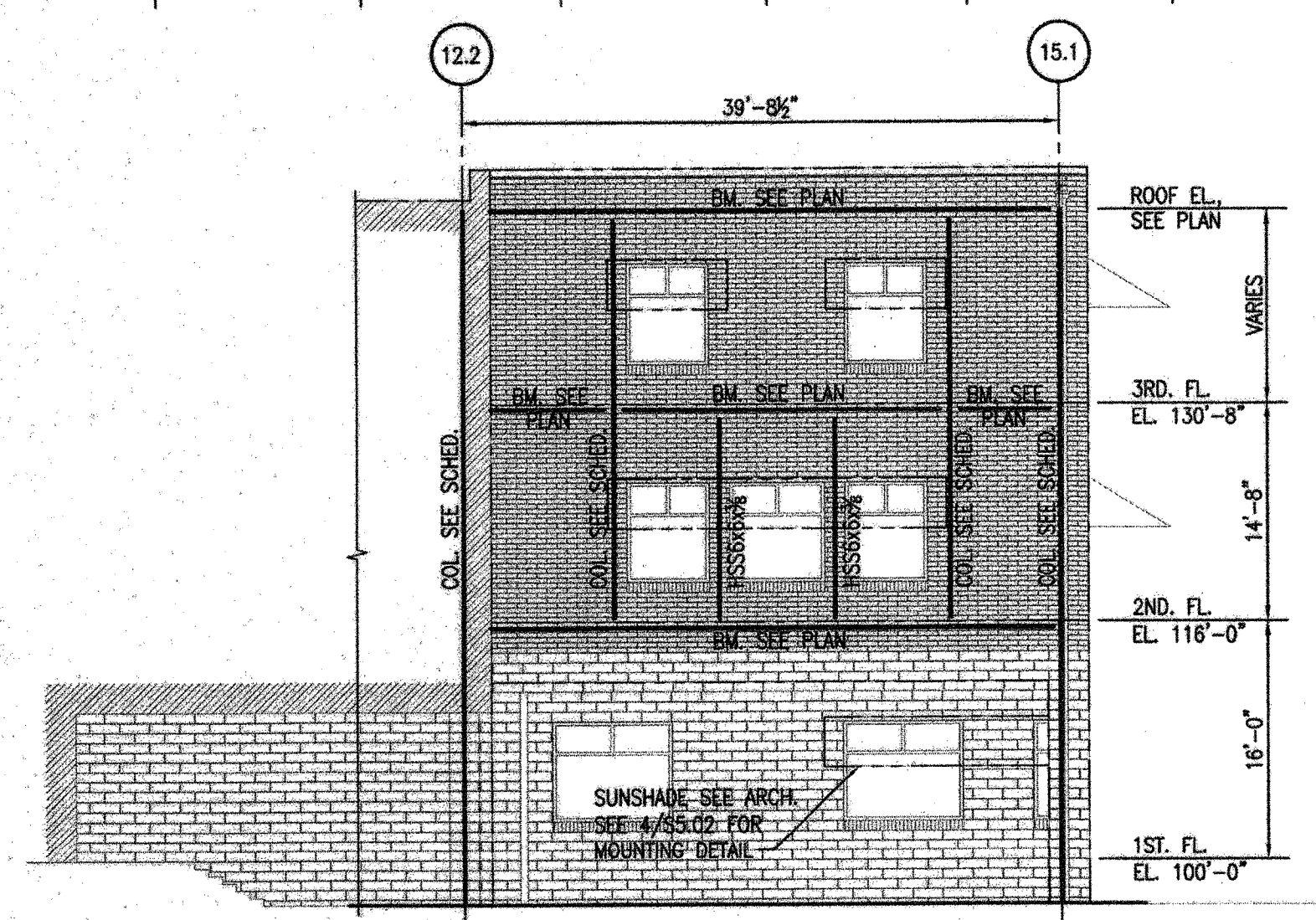
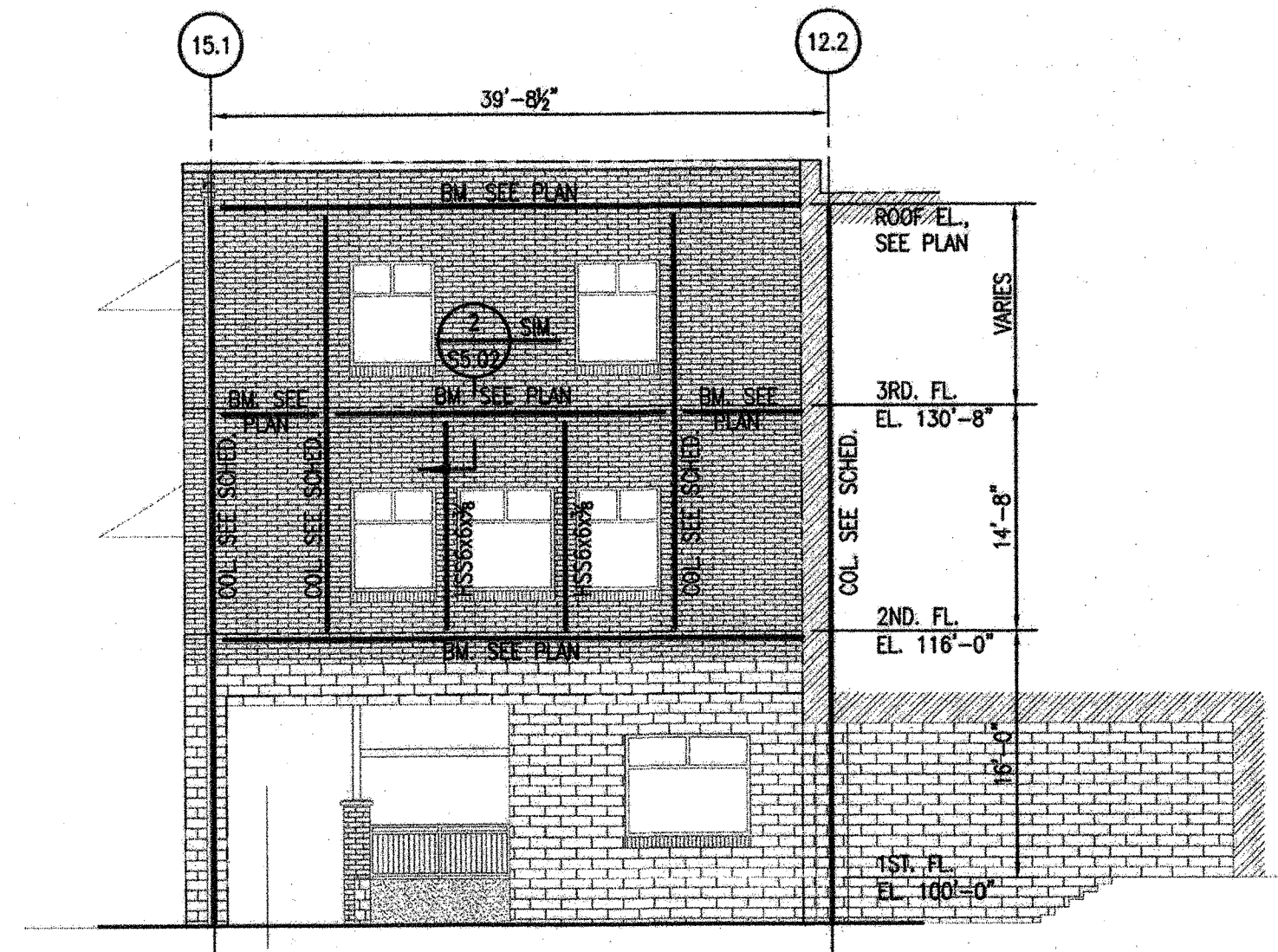


NOTES, UNLESS NOTED OTHERWISE:
 1. (P1) - INDICATES 8"x16" CMU PILASTER W/
 2-#5 VERT. EA. CELL & #2 □@16"
 2. (A) - INDICATES #5@8" O.C. VERT.
 3. (S) - INDICATES 16" CMU "U" BLOCK LINTEL
 CONTINUOUS OVER MULTIPLE SPANS.

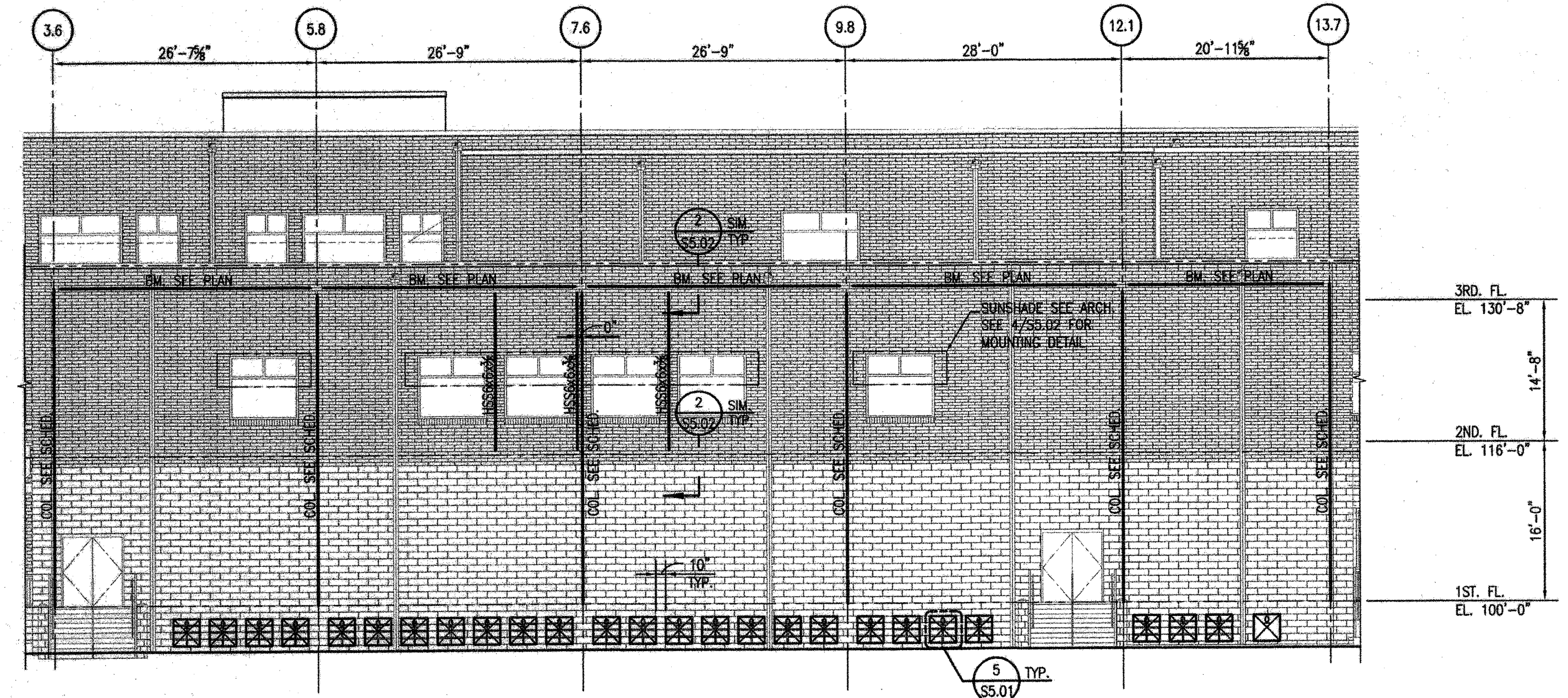
1 ELEVATION-NORTH
 S5.01 3/32"=1'-0"



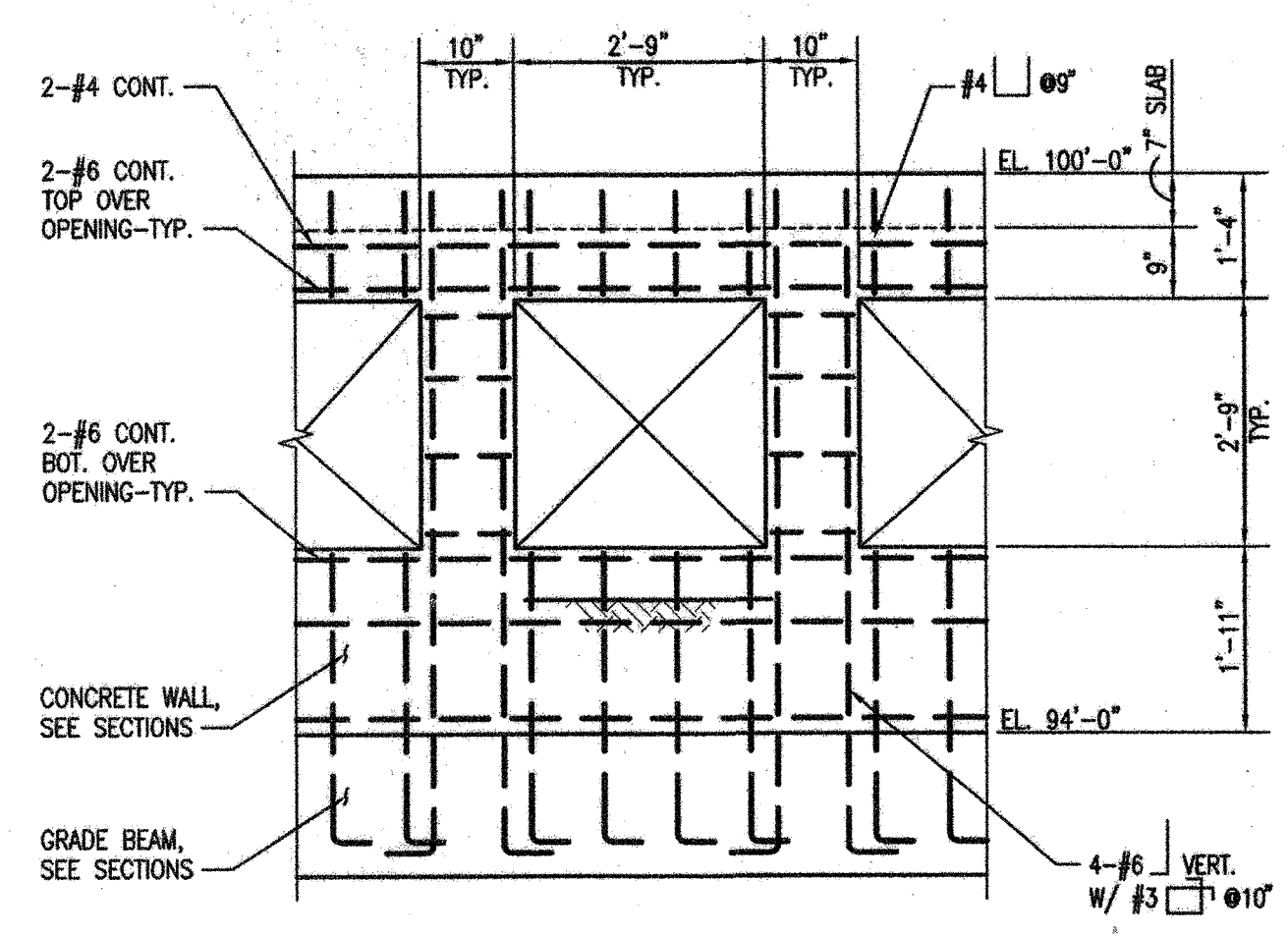
2 PART ELEVATION-SOUTH
 S5.01 3/32"=1'-0"



3 PART ELEVATION-NORTH
 S5.01 3/32"=1'-0"



4 PART ELEVATION-SOUTH
 S5.01 3/32"=1'-0"



5 DETAIL-TYPICAL VENT OPENING
 AT CONCRETE WALL
 S5.01 NTS

NOTES:
 1. COORD. VENT HOLE LOCATIONS W/ ARCH.



**NEW 3 SECTION ELEMENTARY SCHOOL
 AT FISK-HOWARD SCHOOL
 RECOVERY SCHOOL DISTRICT**

211 S. LOPEZ STREET NEW ORLEANS, LOUISIANA 70119

DATE ISSUED:	7 DECEMBER, 2012
REVISED:	
REVISED:	
REVISED:	
REVISED:	
DRAWN BY:	WFD
CHECKED BY:	JAS
PHASE:	

BID DOCUMENTS

11085

TITLE:
**EXTERIOR
 ELEVATIONS & DETAILS**

SHEET:

S5.01

