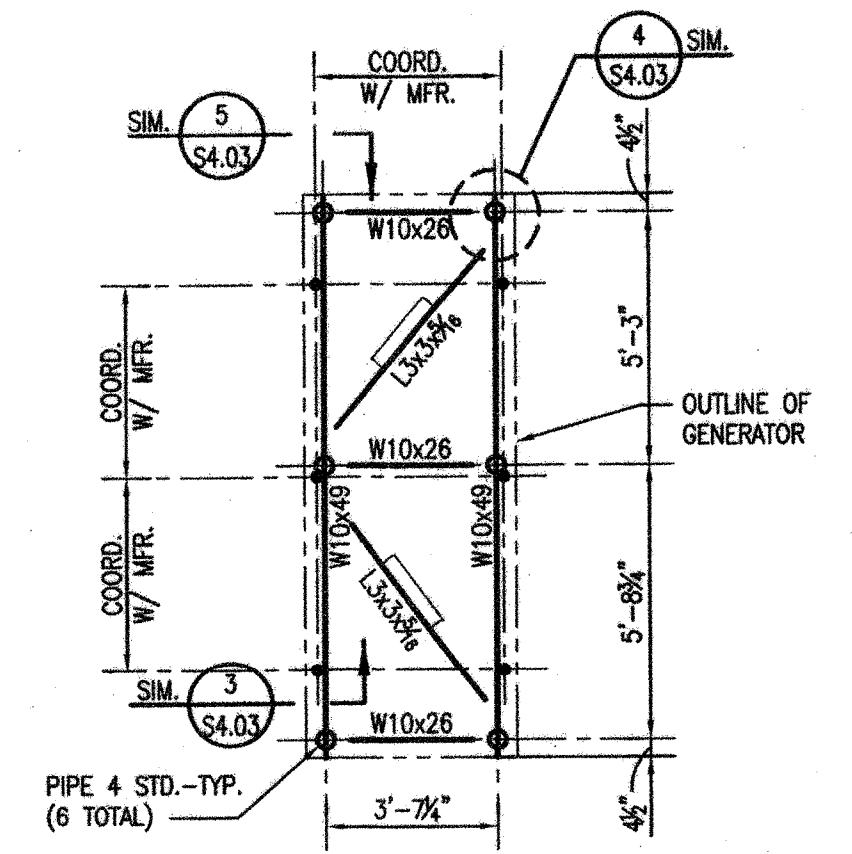


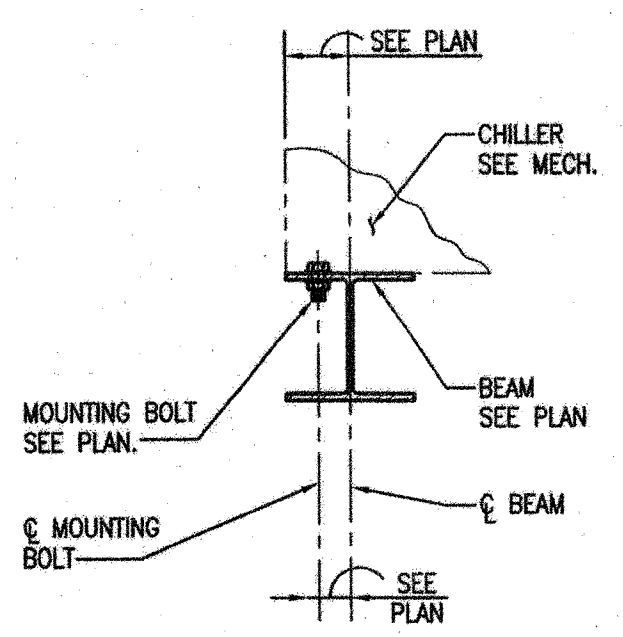
PLAN NOTES: UNLESS NOTED OTHERWISE:
 1. TOP OF STRUCTURAL STEEL EL. 133'-4 1/4".
 2. ● - INDICATES MOUNTING BOLT LOCATION.
 3. ALL STRUCTURAL STEEL TO BE HOT-DIPPED GALVANIZED AFTER FABRICATION. TOUCH UP ALL DAMAGE COATING WITH STICK GALV.
 4. FRAMING SIZES AND LAYOUT SHOWN IS TENTATIVE UNTIL SUCH TIME THAT THE FINAL EQUIPMENT TO BE USED HAS BEEN SELECTED. SEE GEN. NOTE 12 SHEET S0.01.

1 FRAMING PLAN AT MECH. CHILLER-TYP. 1/4"=1'-0"

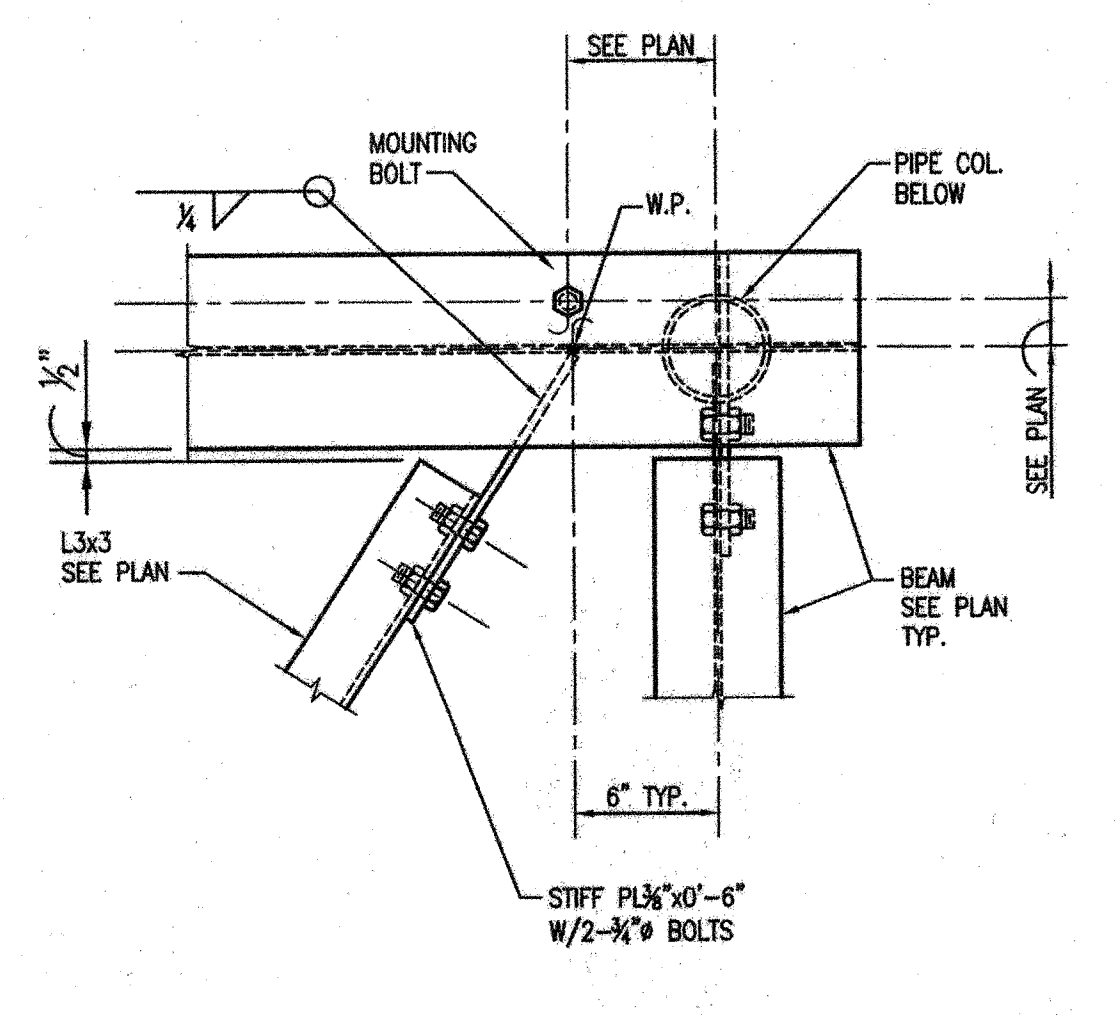


PLAN NOTES: UNLESS NOTED OTHERWISE:
 1. TOP OF STRUCTURAL STEEL EL. 133'-4 1/4".
 2. ● - INDICATES MOUNTING BOLT LOCATION.
 3. ALL STRUCTURAL STEEL TO BE HOT-DIPPED GALVANIZED AFTER FABRICATION. TOUCH UP ALL DAMAGE COATING WITH STICK GALV.
 4. FRAMING SIZES AND LAYOUT SHOWN IS TENTATIVE UNTIL SUCH TIME THAT THE FINAL EQUIPMENT TO BE USED HAS BEEN SELECTED. SEE GEN. NOTE 12 SHEET S0.01.

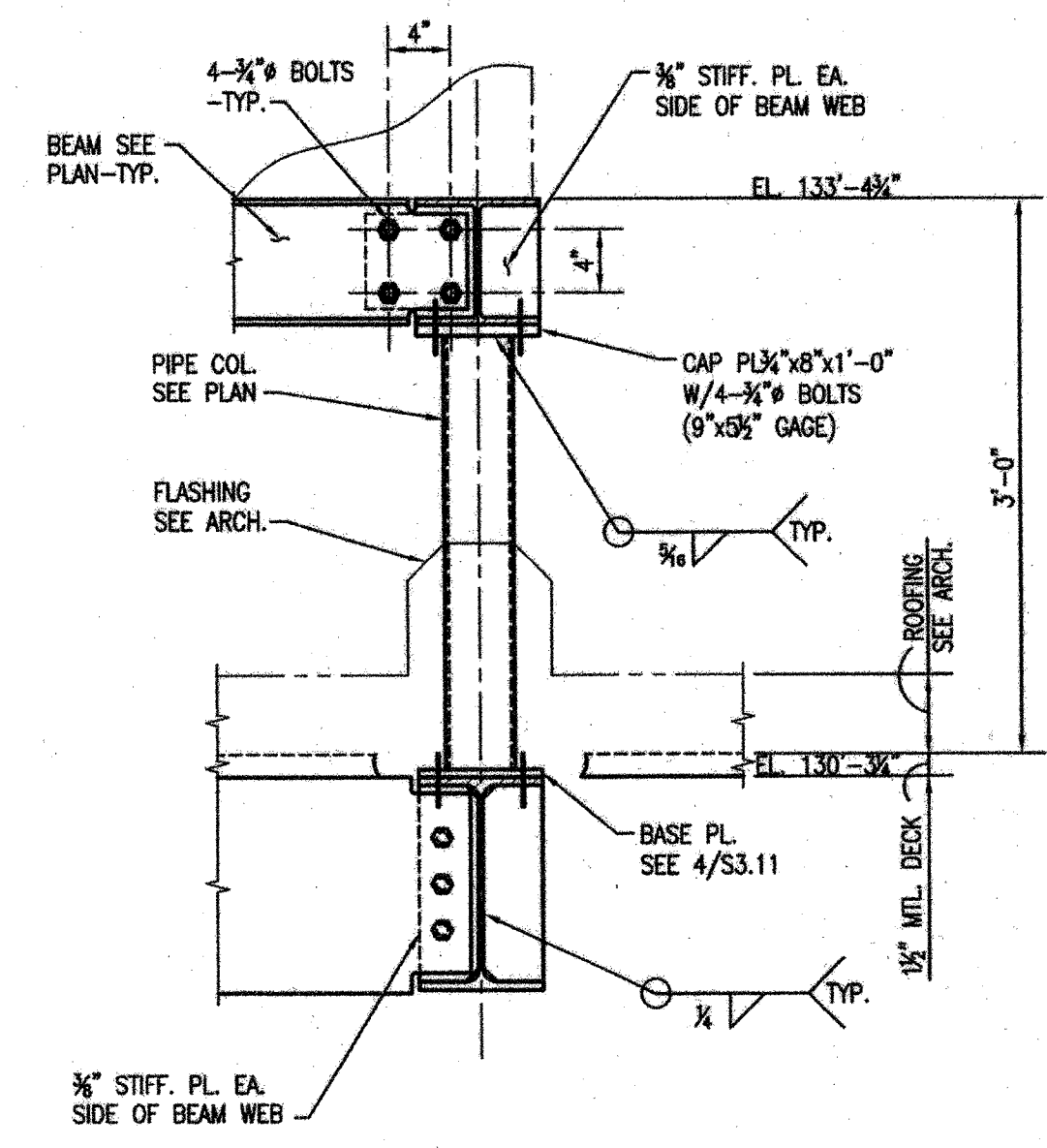
2 FRAMING PLAN AT GENERATOR 1/4"=1'-0"



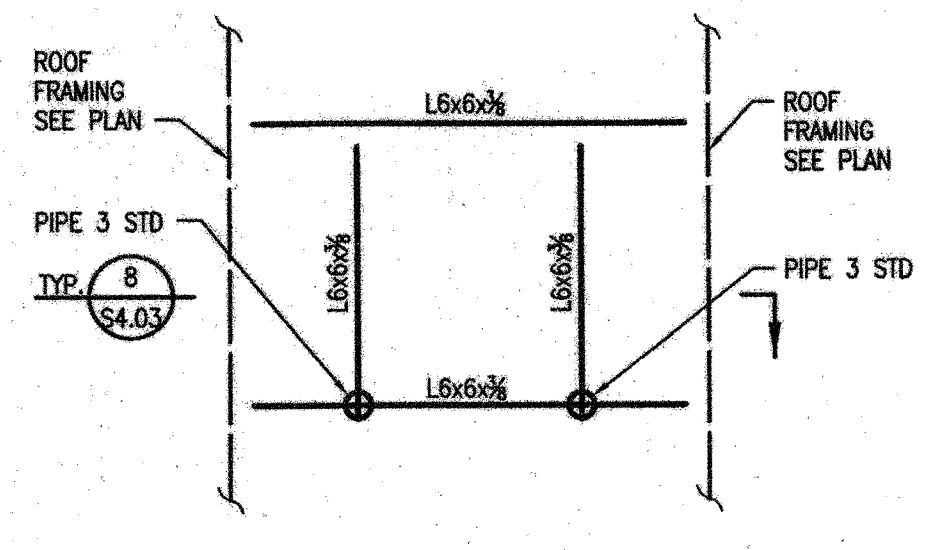
3 SECTION 1"=1'-0"



4 PLAN DETAIL 1 1/2"=1'-0"

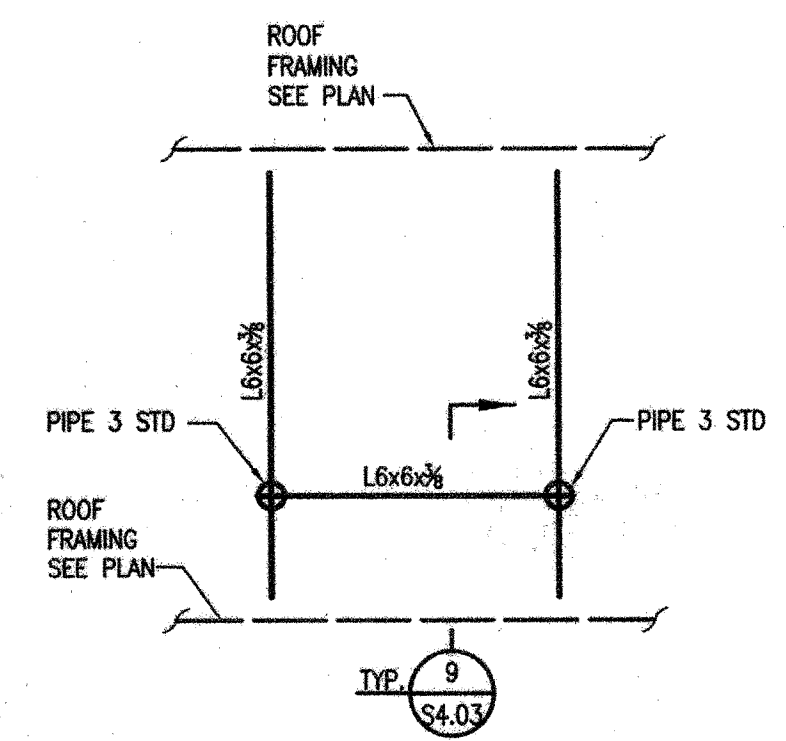


5 DETAIL 1"=1'-0"



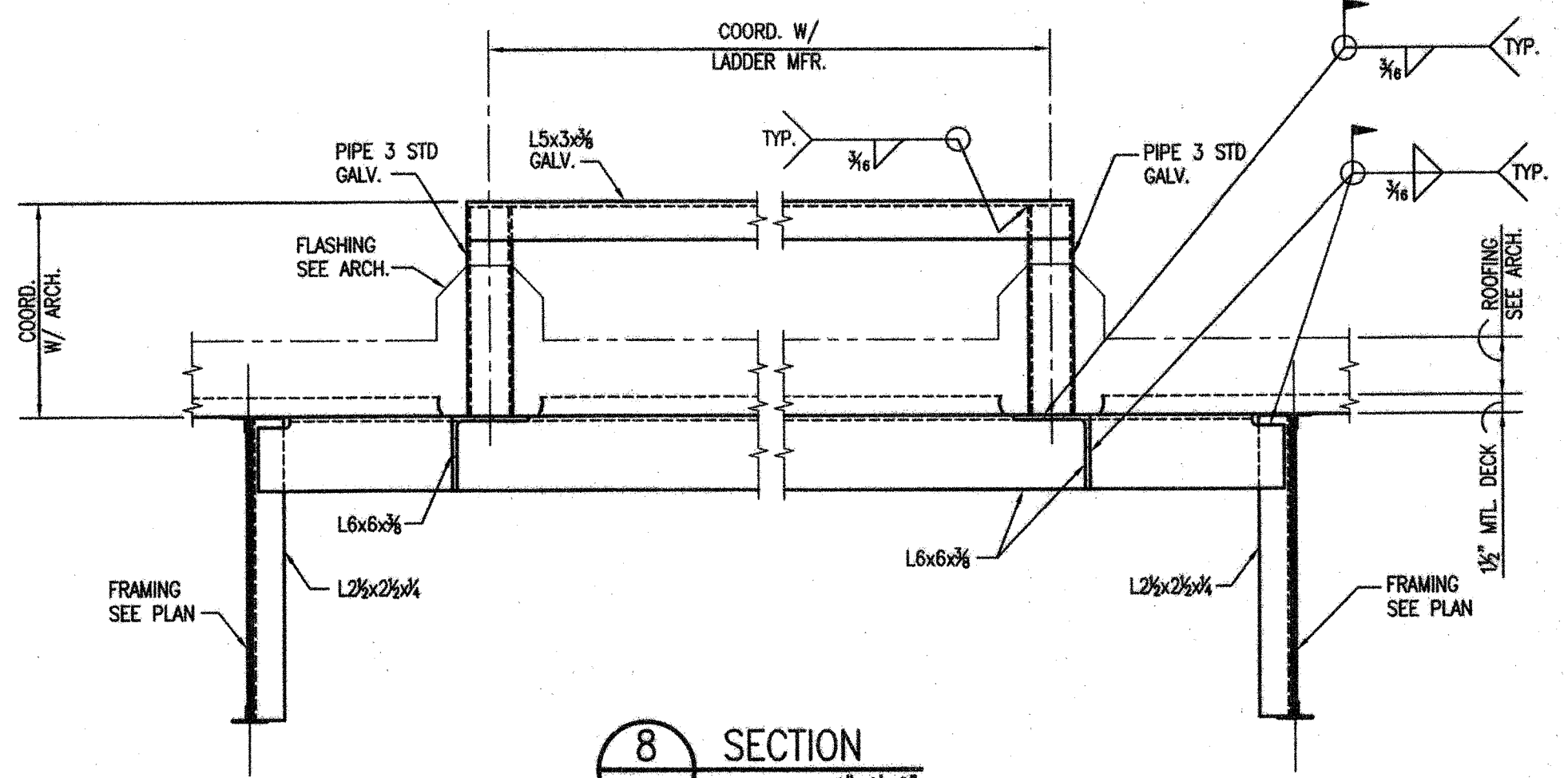
NOTE:
 1. LADDER LOCATION TO BE COORDINATED WITH ARCH.
 2. DIM. TO BE COORDINATED WITH LADDER MANUFACTURER.

6 PLAN DETAIL-TYPICAL LADDER SUPPORT (PERP. TO ROOF FRAMING) 1/2"=1'-0"

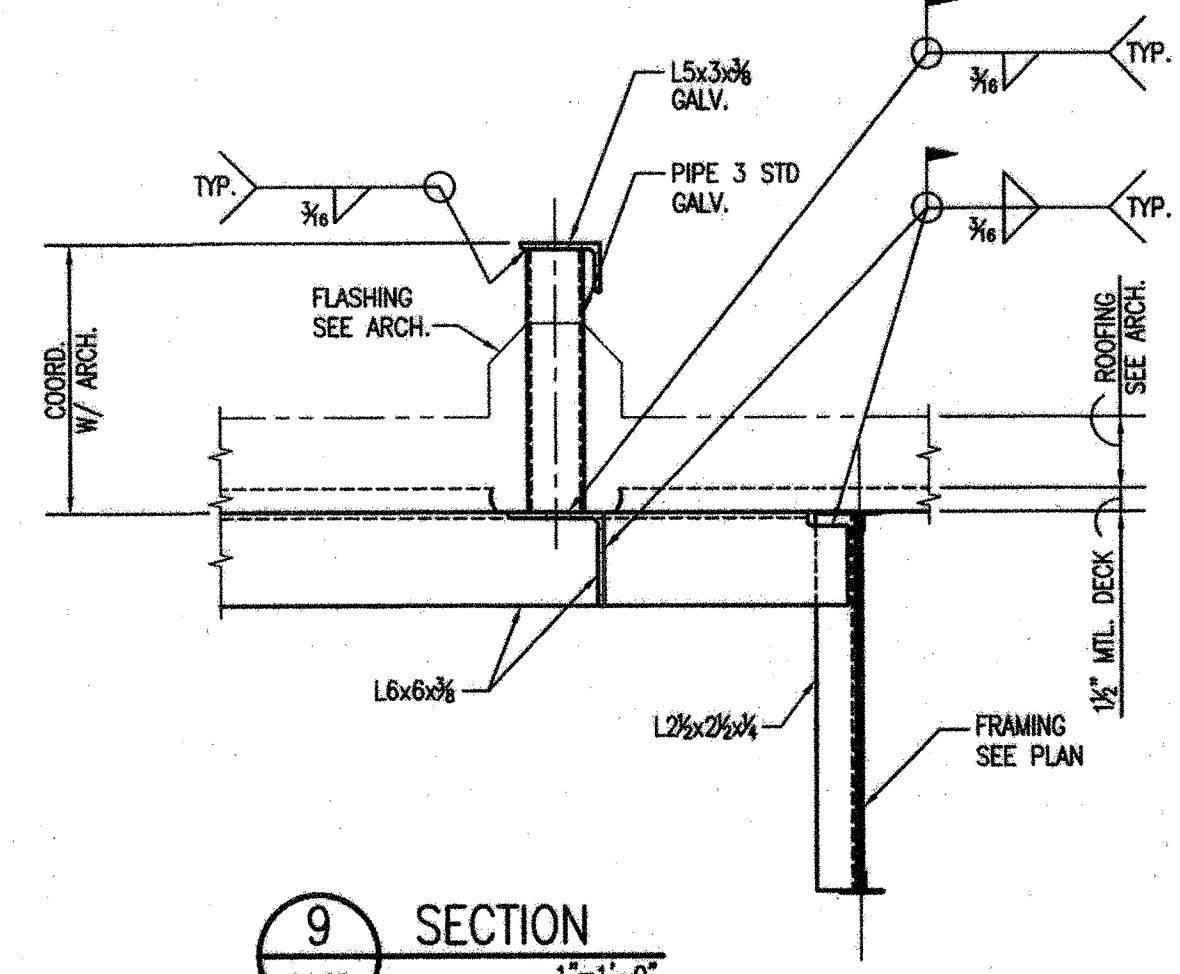


NOTE:
 1. LADDER LOCATION TO BE COORDINATED WITH ARCH.
 2. DIM. TO BE COORDINATED WITH LADDER MANUFACTURER.

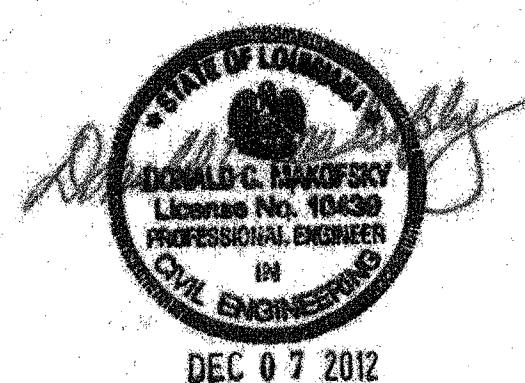
7 PLAN DETAIL-TYPICAL LADDER SUPPORT (PARALLEL TO ROOF FRAMING) 1/2"=1'-0"



8 SECTION 1"=1'-0"



9 SECTION 1"=1'-0"



NEW 3 SECTION ELEMENTARY SCHOOL
 AT FISK-HOWARD SCHOOL
 RECOVERY SCHOOL DISTRICT

211 S. LOPEZ STREET NEW ORLEANS, LOUISIANA 70119

DATE ISSUED:	7 DECEMBER, 2012
REVISED:	
REVISED:	
REVISED:	
REVISED:	
DRAWN BY:	WFD
CHECKED BY:	JAS
PHASE:	

BID DOCUMENTS

11085

TITLE:
 MECHANICAL EQUIP.
 PLANS & DETAILS

SHEET:

S4.03

