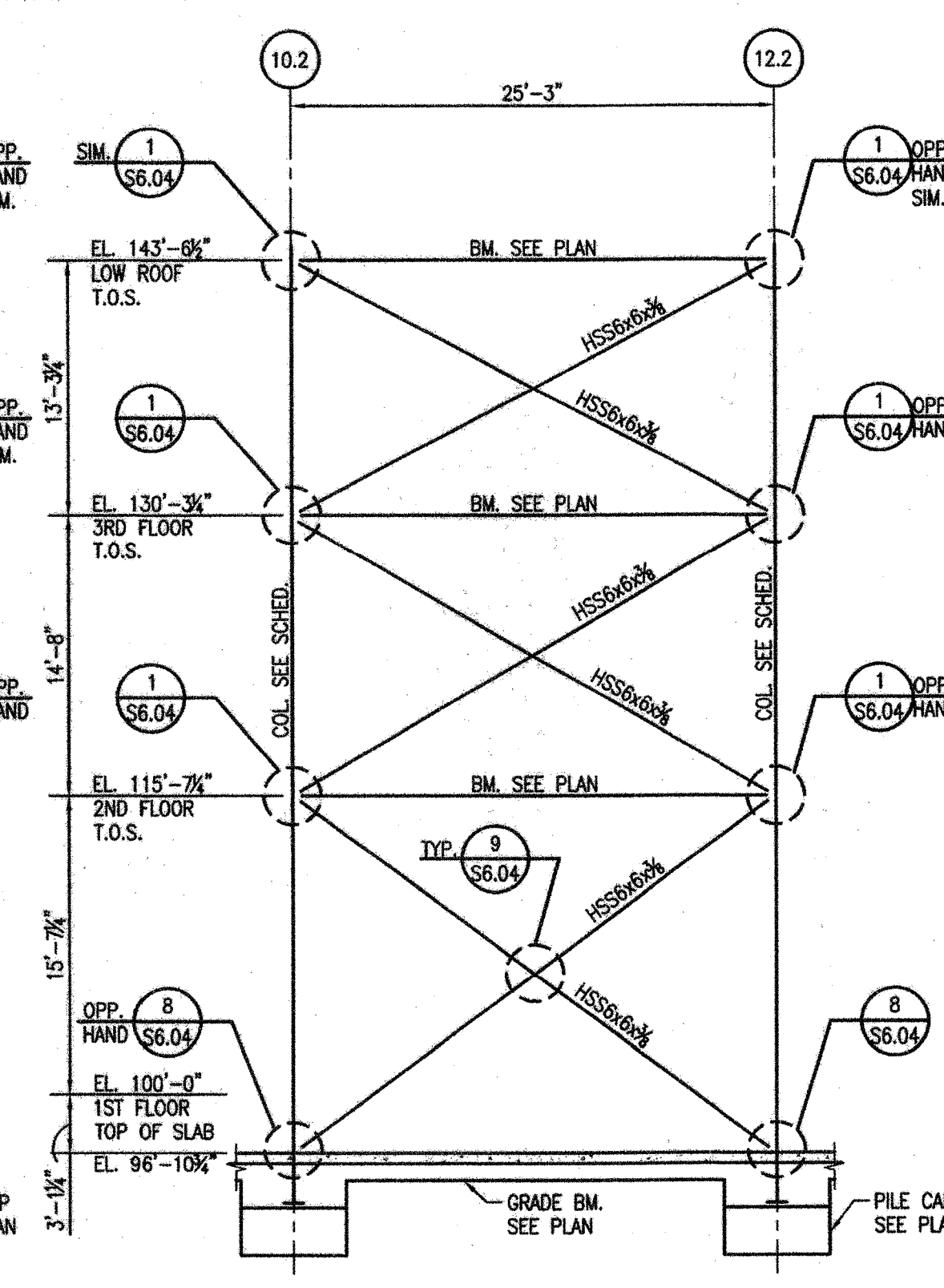


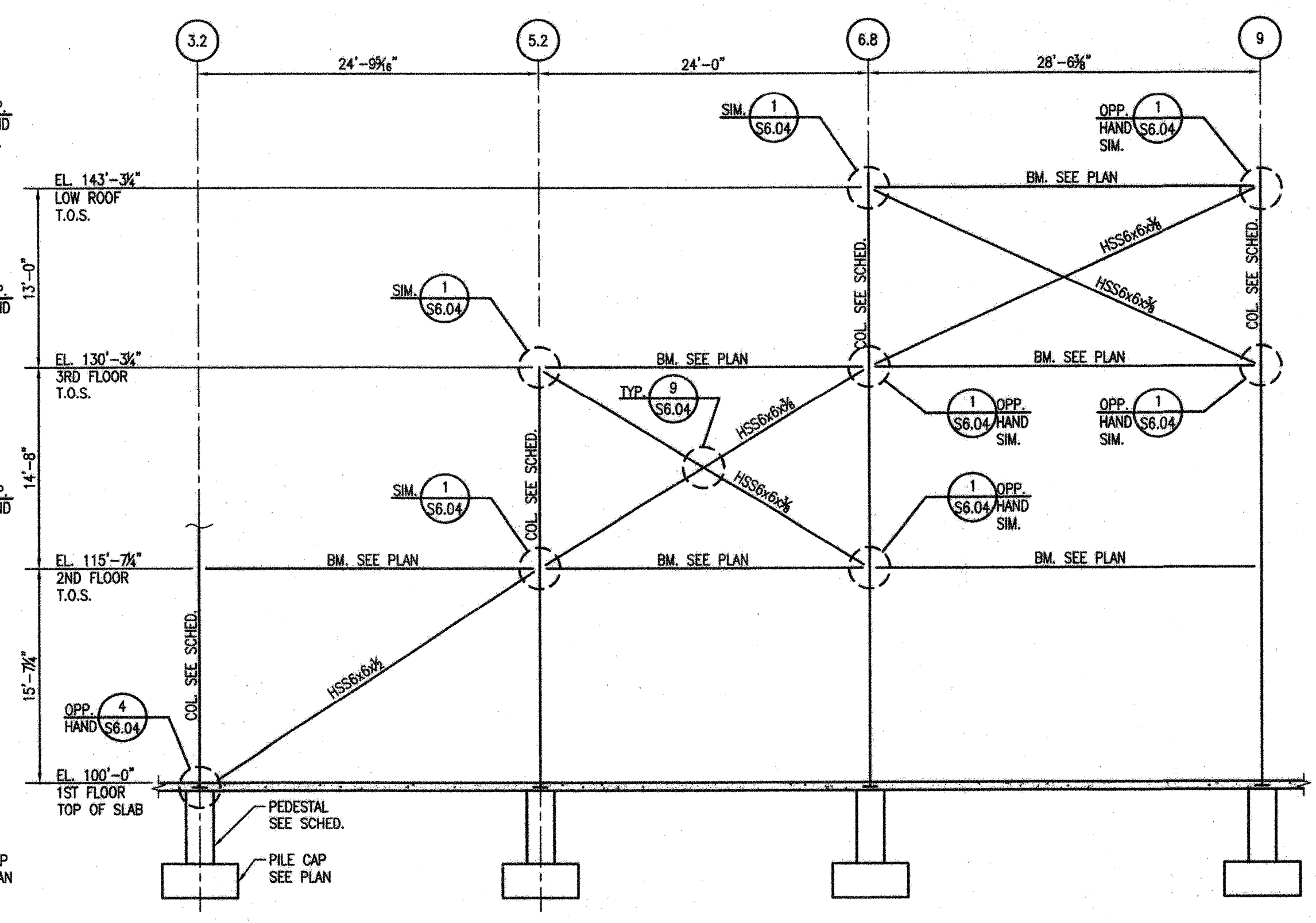
NOTE: UNLESS NOTED OTHERWISE:
1. ELEVATIONS ARE TO TOP OF STEEL.

1 ELEVATION-BRACING AT
COLUMN LINE F 1/8"=1'-0"



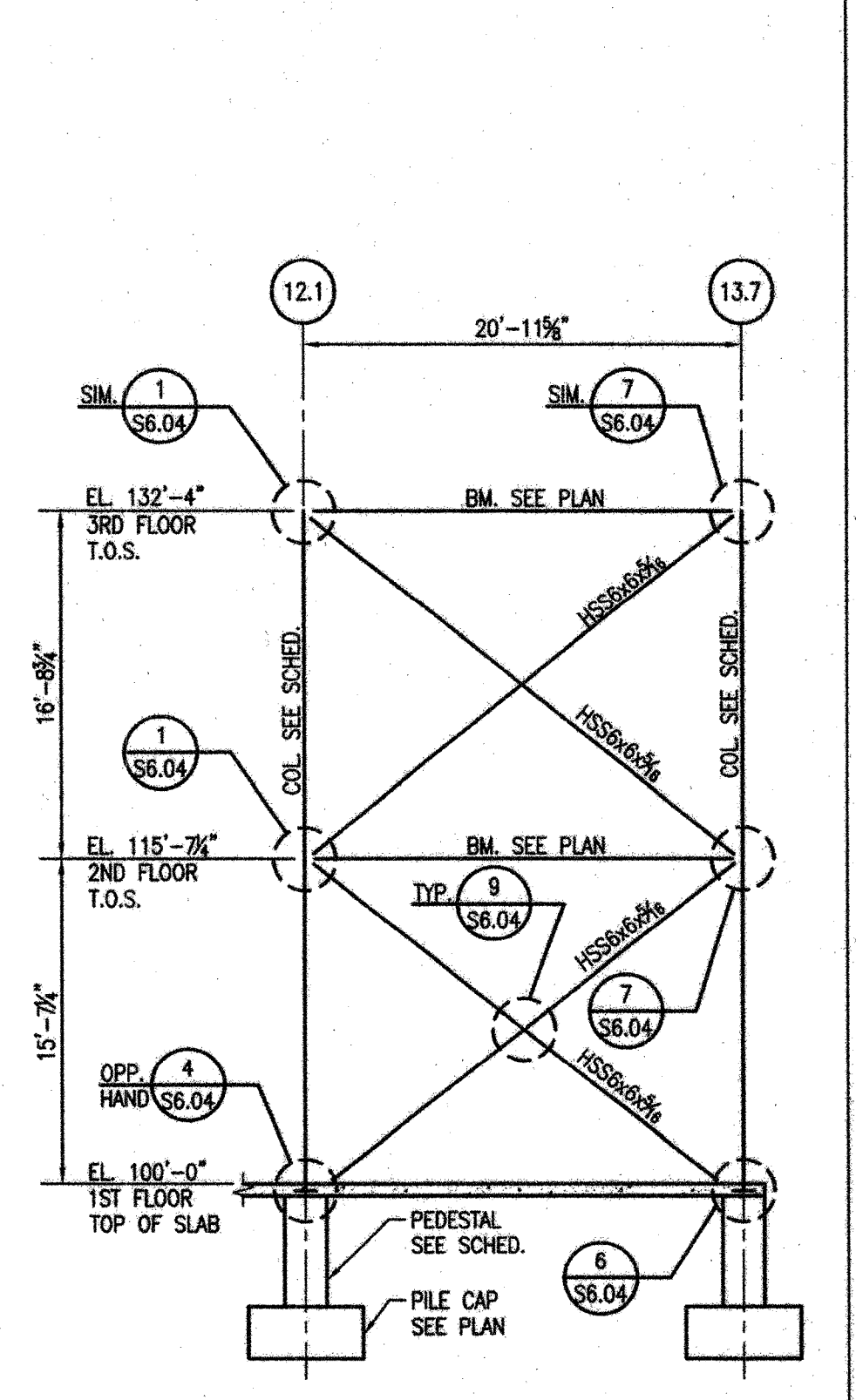
NOTE: UNLESS NOTED OTHERWISE:
1. ELEVATIONS ARE TO TOP OF STEEL.

2 ELEVATION-BRACING AT
COLUMN LINE H 1/8"=1'-0"



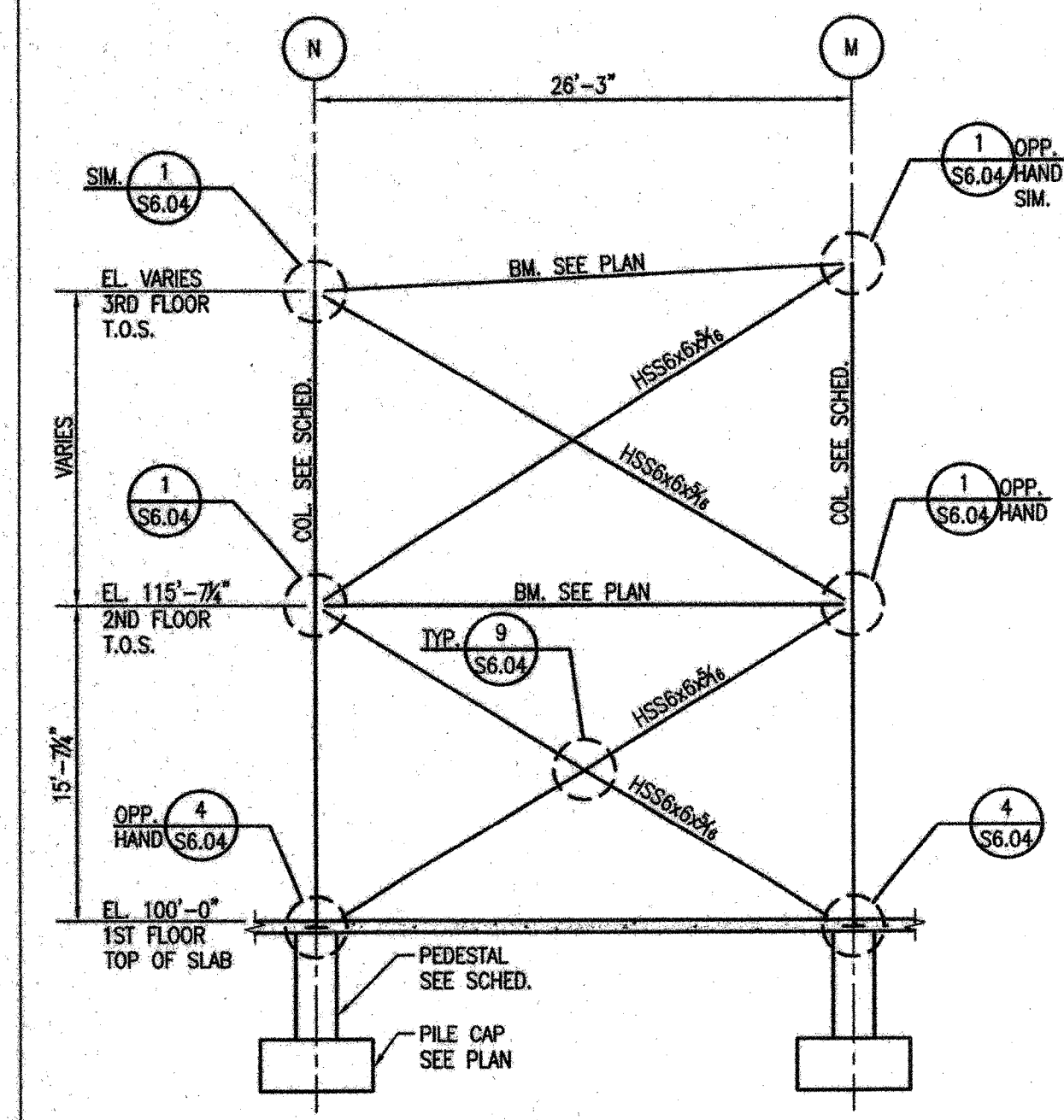
NOTE: UNLESS NOTED OTHERWISE:
1. ELEVATIONS ARE TO TOP OF STEEL.

3 ELEVATION-BRACING AT
COLUMN LINE I 1/8"=1'-0"



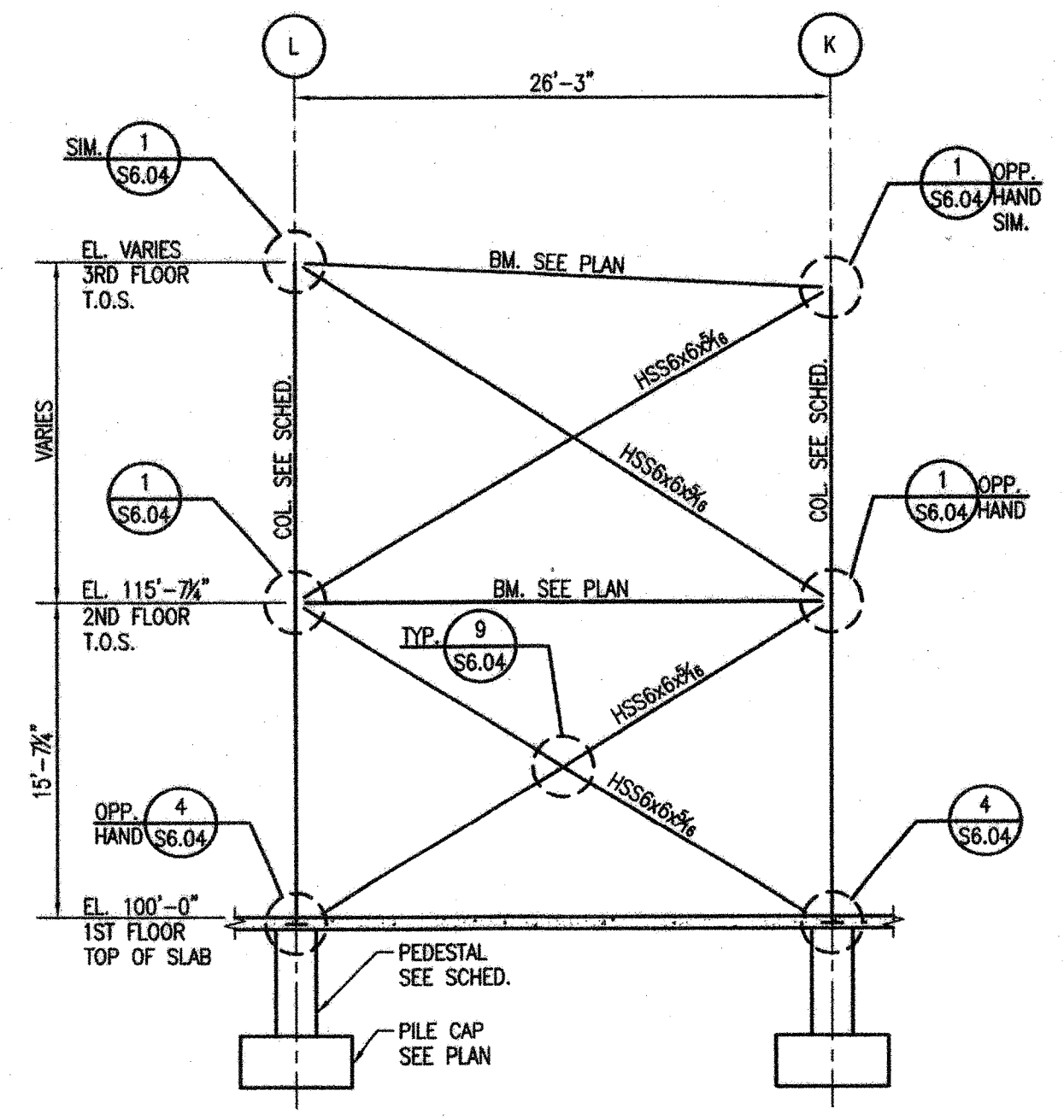
NOTE: UNLESS NOTED OTHERWISE:
1. ELEVATIONS ARE TO TOP OF STEEL.

4 ELEVATION-BRACING AT
COLUMN LINE N 1/8"=1'-0"



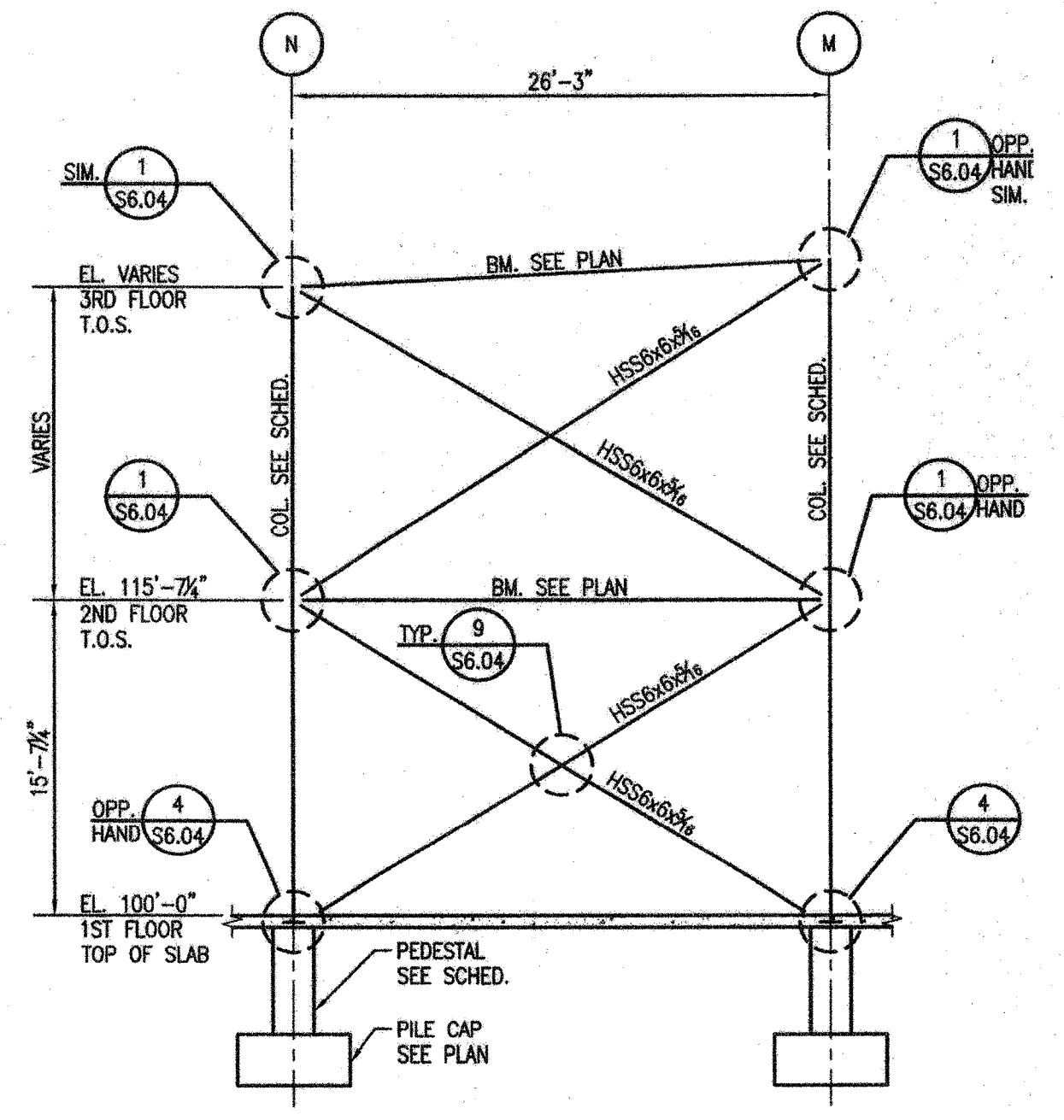
NOTE: UNLESS NOTED OTHERWISE:
1. ELEVATIONS ARE TO TOP OF STEEL.

5 ELEVATION-BRACING AT
COLUMN LINE 3.6 1/8"=1'-0"



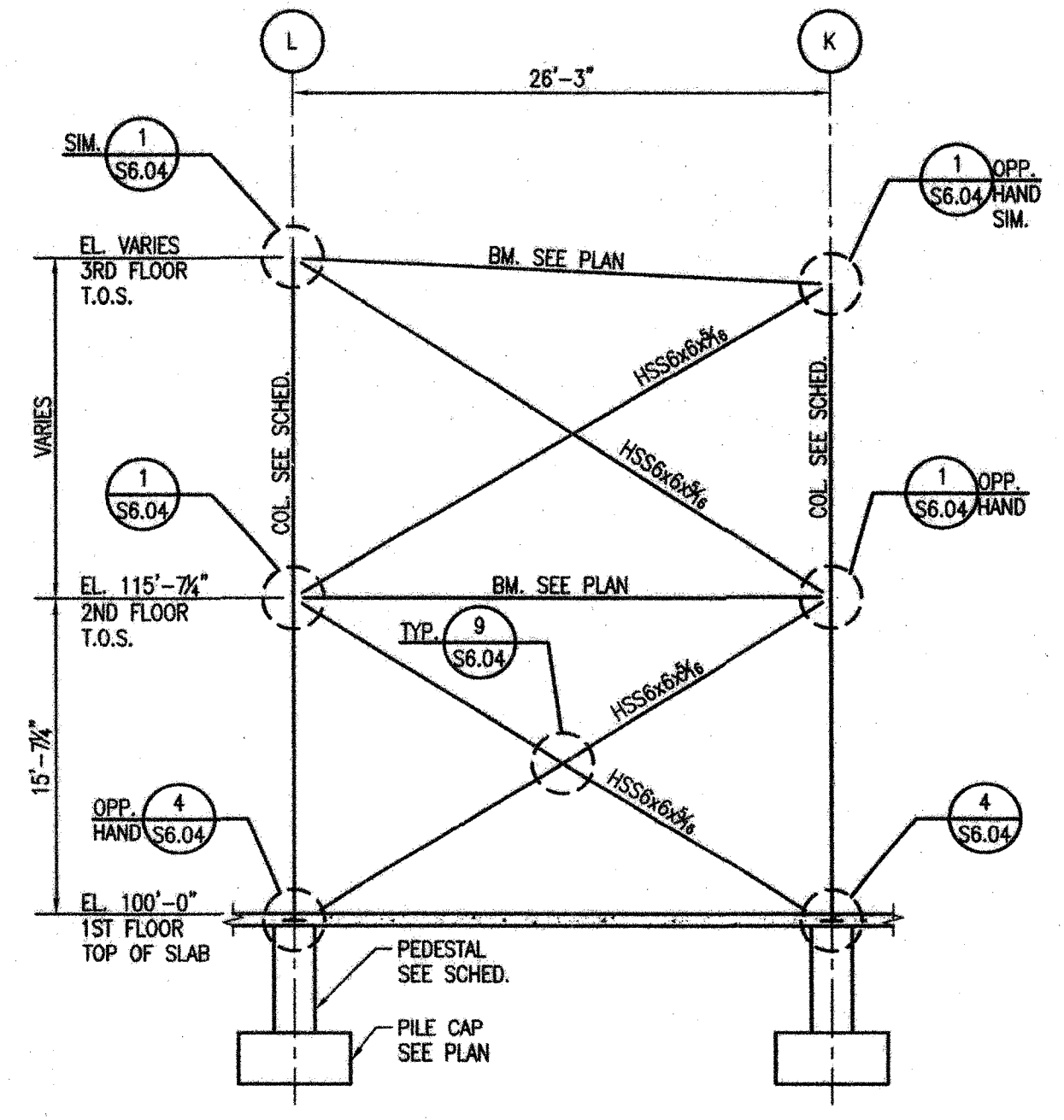
NOTE: UNLESS NOTED OTHERWISE:
1. ELEVATIONS ARE TO TOP OF STEEL.

6 ELEVATION-BRACING AT
COLUMN LINE 3.6 1/8"=1'-0"



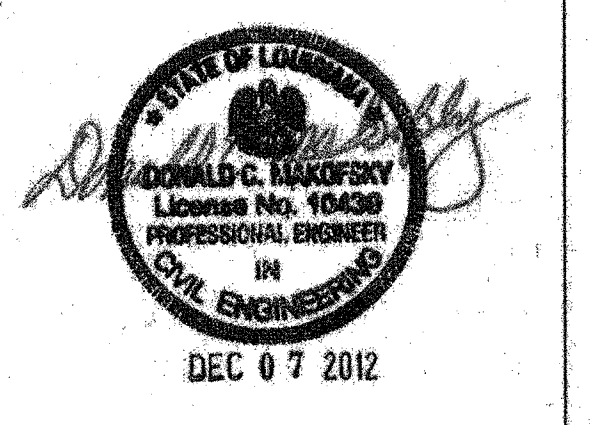
NOTE: UNLESS NOTED OTHERWISE:
1. ELEVATIONS ARE TO TOP OF STEEL.

7 ELEVATION-BRACING AT
COLUMN LINE 13.7 1/8"=1'-0"



NOTE: UNLESS NOTED OTHERWISE:
1. ELEVATIONS ARE TO TOP OF STEEL.

8 ELEVATION-BRACING AT
COLUMN LINE 13.7 1/8"=1'-0"



**NEW 3 SECTION ELEMENTARY SCHOOL
AT FISK-HOWARD SCHOOL
RECOVERY SCHOOL DISTRICT**
NEW ORLEANS, LOUISIANA 70119
211 S. LOPEZ STREET

DATE ISSUED: 7 DECEMBER, 2012
 REVISED: _____
 REVISED: _____
 REVISED: _____
 REVISED: _____
 DRAWN BY: WFD
 CHECKED BY: JAS
 PHASE: _____

BID DOCUMENTS

11085

TITLE:
BRACING ELEVATIONS

SHEET:
S6.03

