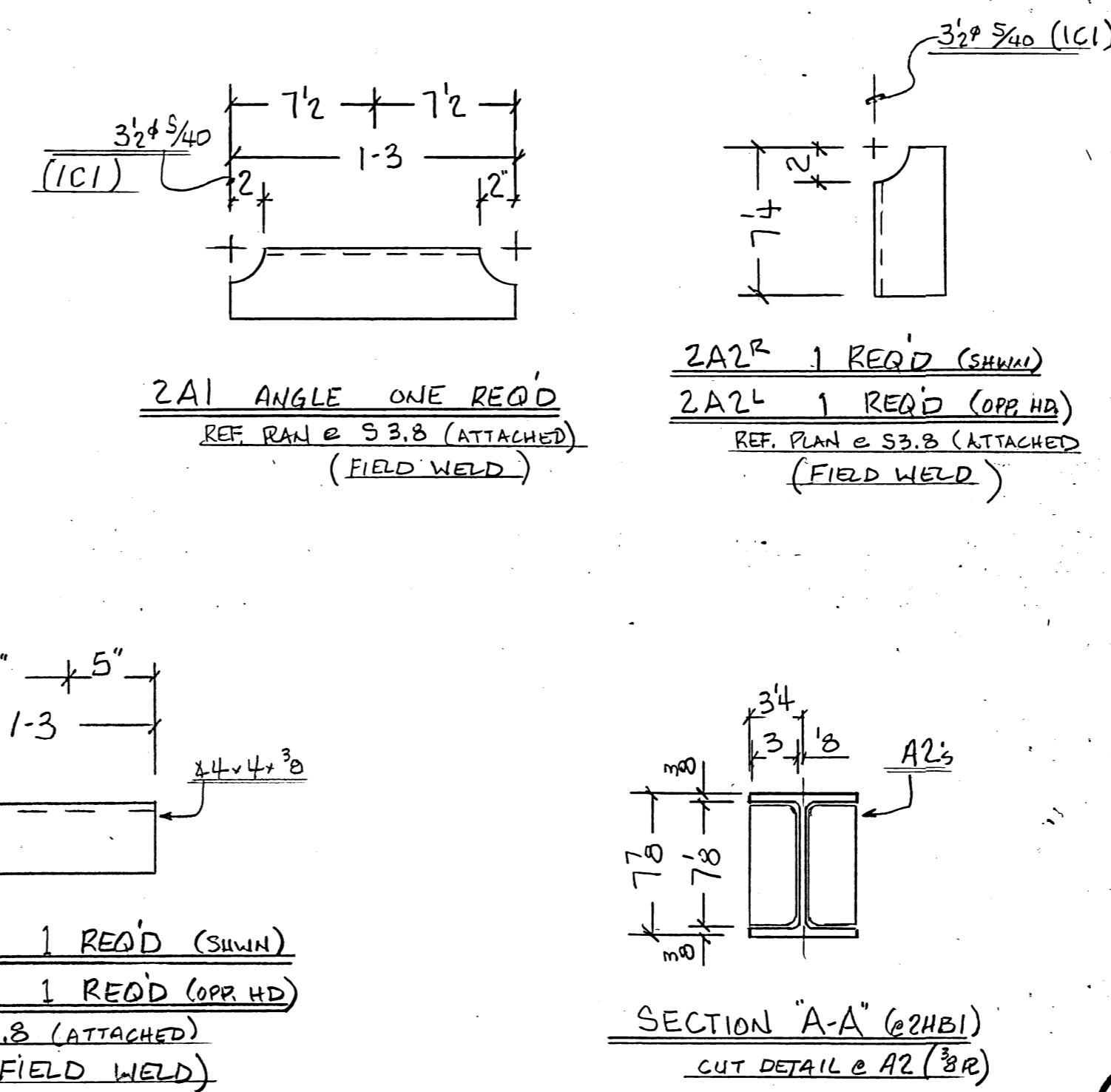
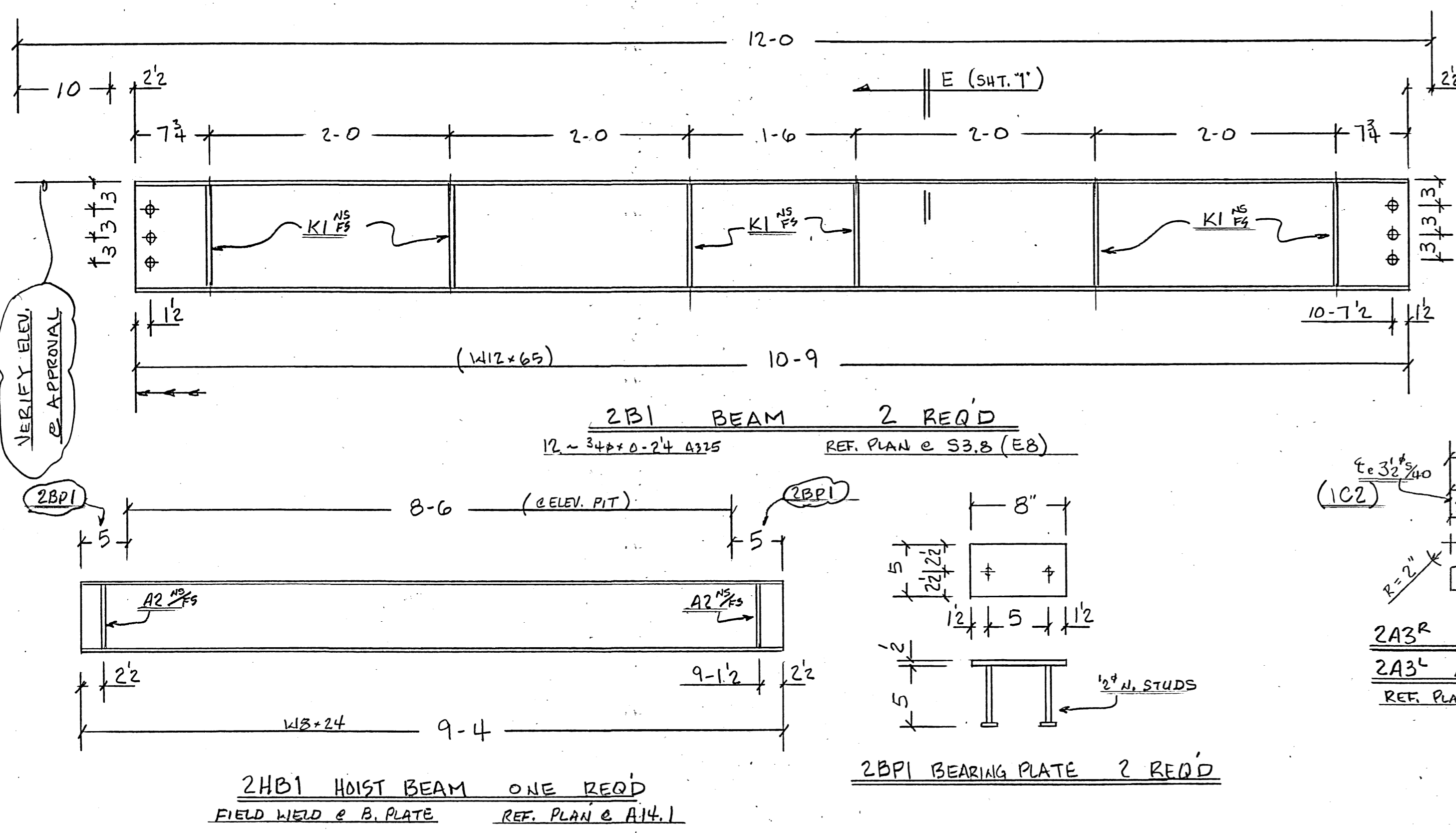


a b c d e f g h k m p s t v w x y z aa ab ac ad ae af ag ah ak am ap as at av aw ax ay az ba bb bc bd be bf bg bh bk bm bp bs bt bv bw bx by bz



BILL OF MATERIAL					SHOP ORDER		
SHIP	MARK	DATE NO.	DESCRIPTION	LENGTH		REMARKS	WT.
				FT.	IN.		
2	2B1		W12x65	10	9		
	K1	24	R3B	0	10 3/4		
ONE	2A1		2 4x4x3/8	1	3		
ONE	2A2 <sup>R</sup>		2 4x4x3/8	0	7 1/4		
ONE	2A2 <sup>L</sup>		do do	0	7 1/4		
ONE	2A3 <sup>R</sup>		2 4x4x3/8	1	3		
ONE	2A3 <sup>L</sup>		do do	1	3		
ONE	2HB1		W8x24	9	4		
	A2	4	R3Bx3	0	7 1/8		
2	2BPI		R2x5	0	8		
	4		1/2" NELSON STUD	0	5		
8	2B2		6" STD. PIPE	0	6		
4	2B3		6" STD. PIPE	2	0		

**H.D. GALV.**  
"No Paint Req'd"

**1<sup>ST</sup> RELEASE**

**E1 = A3.8**

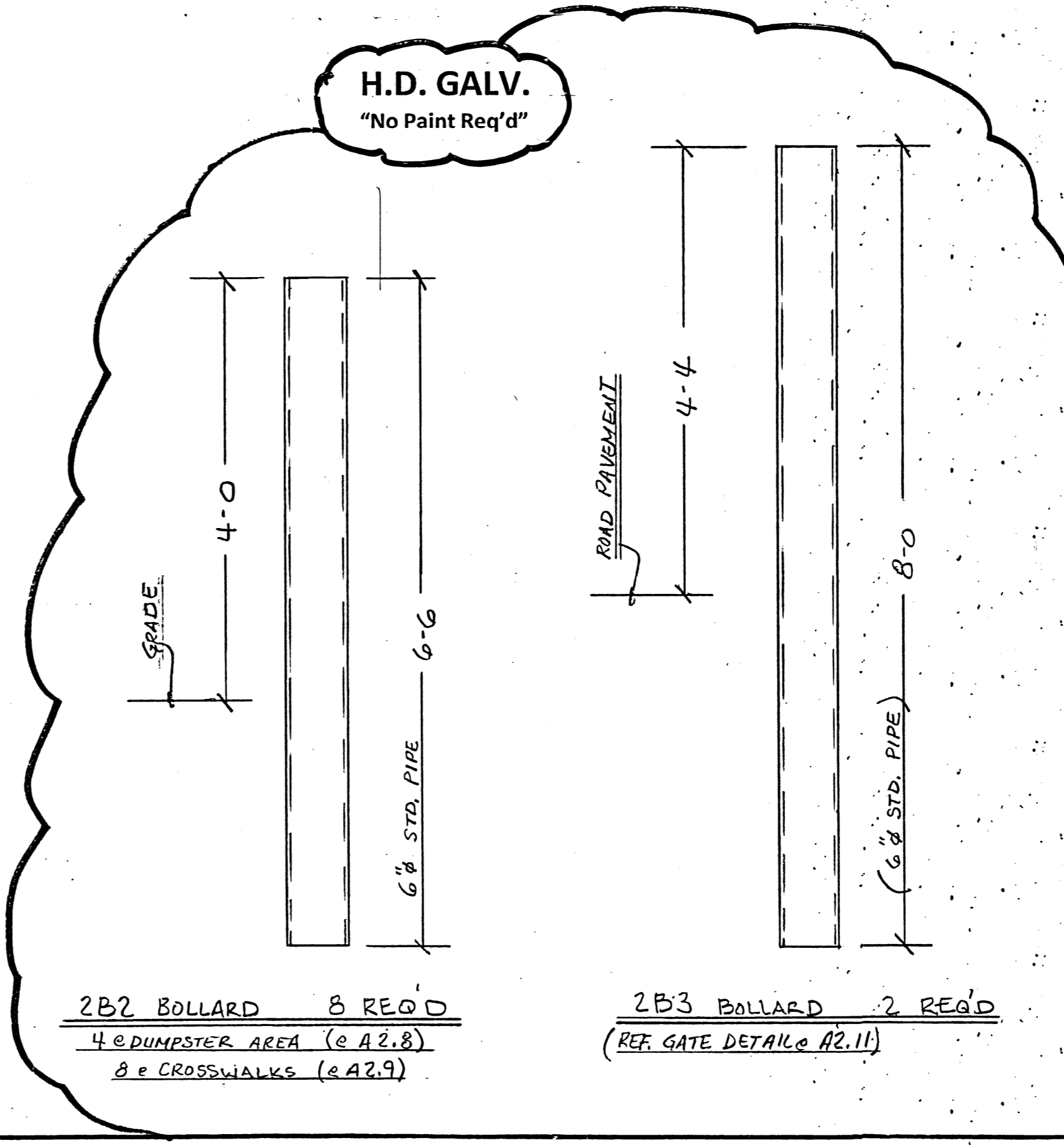
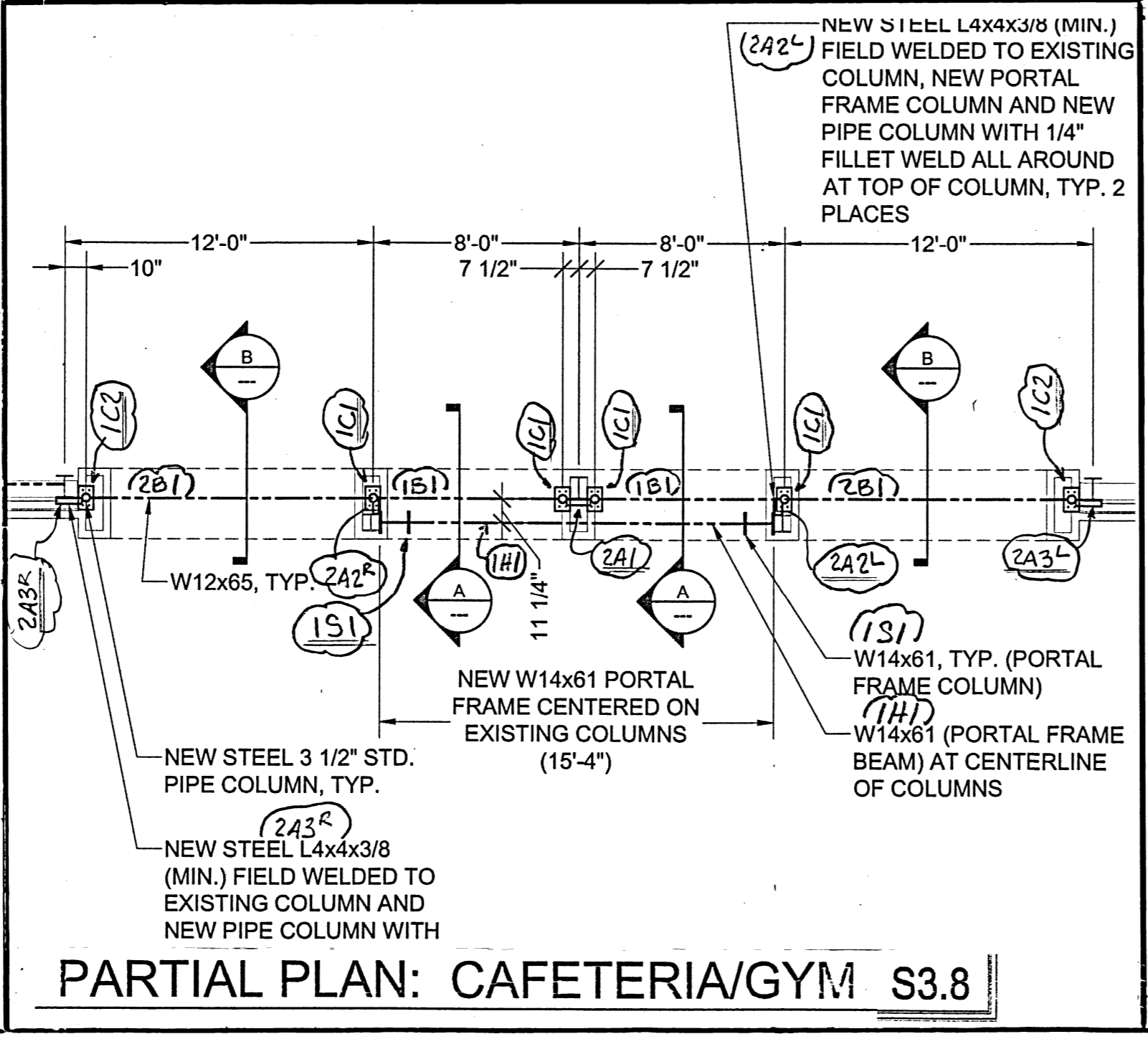
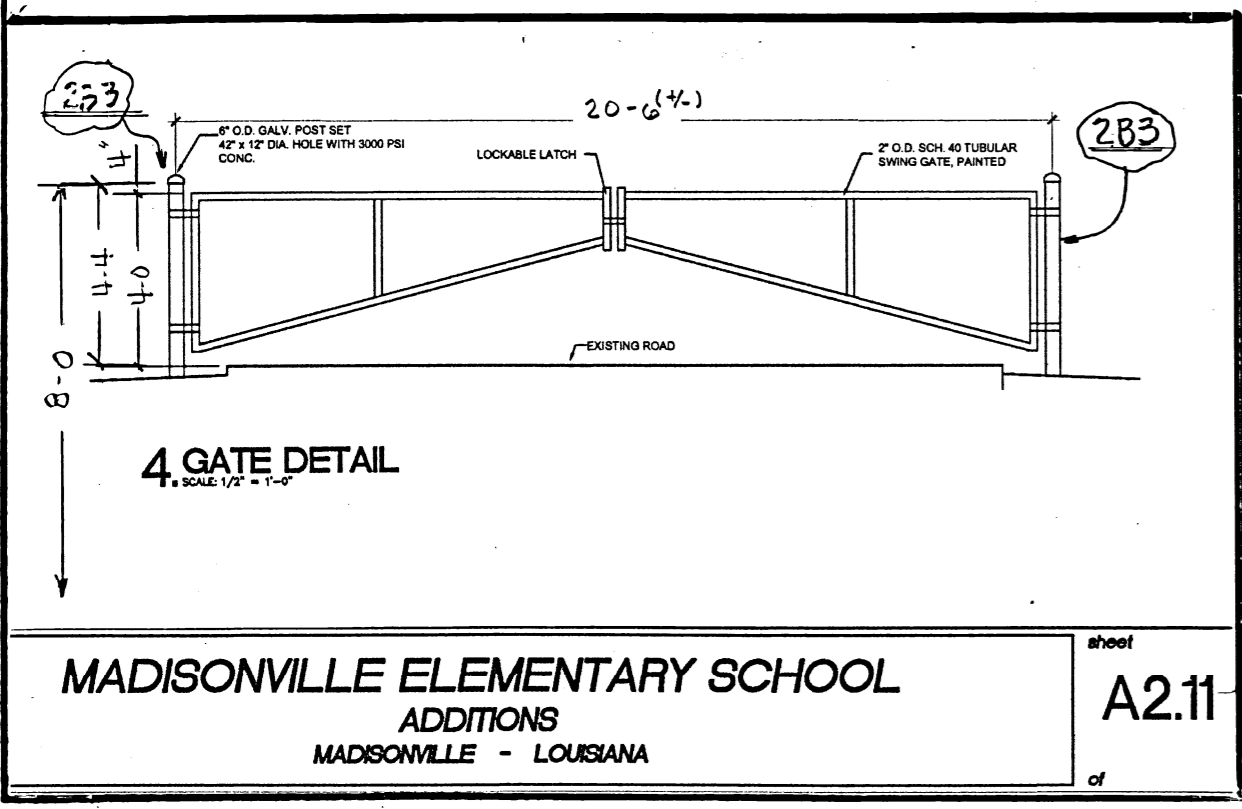
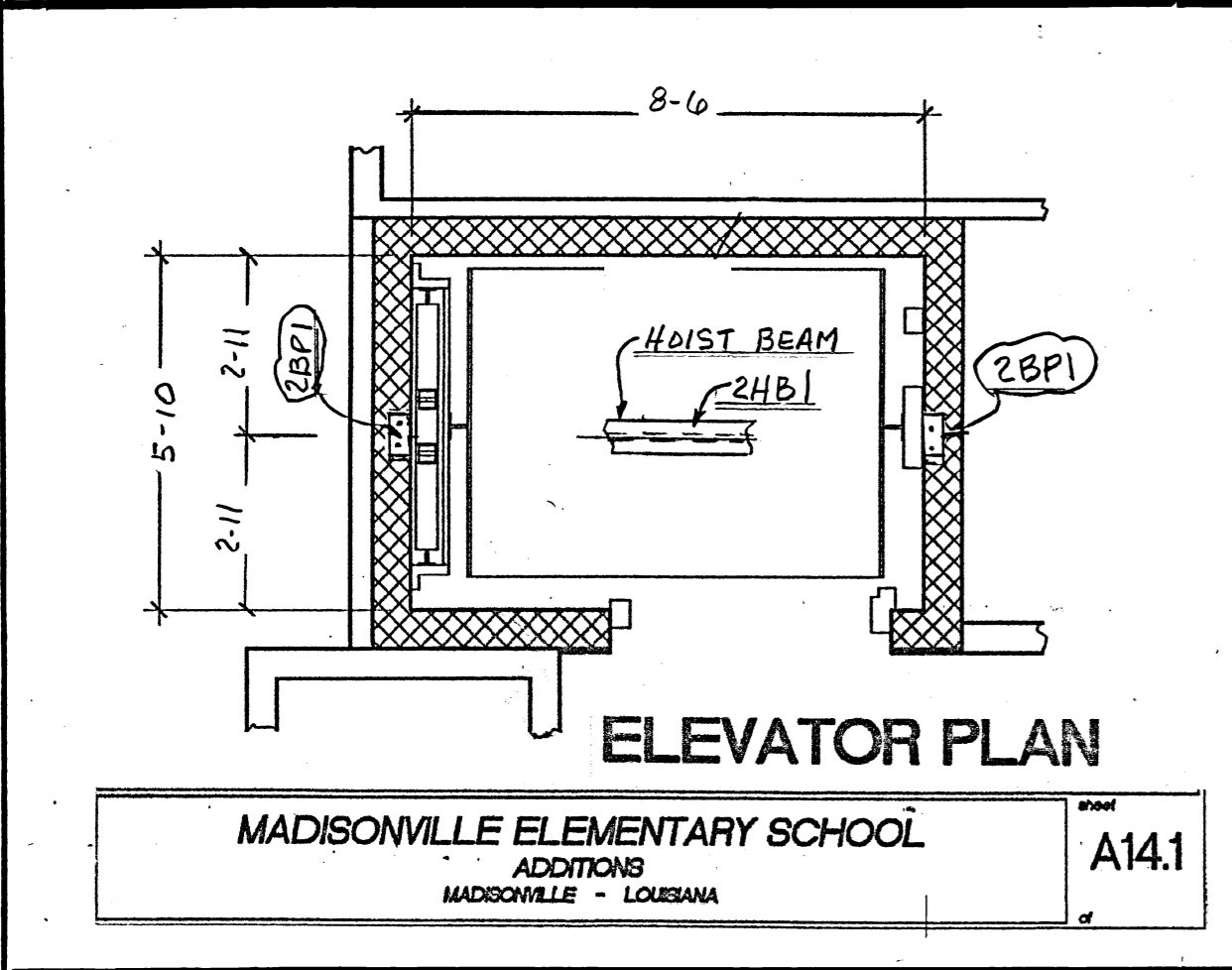
ERECTOR BOLTS W/H.H.H. & H.H.N.				WASHERS		FINISH	
QUAN.	SIZE	LENGTH	TYPE	FLAT	BEV		
						@ SHT. 1	

**PIW** Prairieville Iron Works

39041 James Drive Phone 225 673 9372  
 Prairieville, LA 70769 Email: prairievilleiron@yahoo.com

CUSTOMER: VOELKEL MCWILLIAMS LLC  
 PROJECT: Add's @ MADISONVILLE ELEM.  
 FOR ST TAMMANY PARISH SCH. BOARD  
 LOCATION: MADISONVILLE, LA  
 ARCHT.-ENGR. [ ] SHOP  
 CUST. P.O. NO. [ ] FIELD  
 SURFACE PREP. PER SPEC  
 OPEN HOLES 1/8" @ 4" ON  
 WELDS 4 FILLET E70XX (U.I.O.)  
 FINISH SHOP PRIME (U.I.O.)

DRAWN: DJR  
 CHECKED: CC  
 DRAWING NUMBER: 2050  
 SHEET: 2 OF 2



Beam: ASTM A992  
 Plate: ASTM A36  
 Angle: ASTM A36  
 Pipe: ASTM A53 Gr B

NO CHANGES WILL BE MADE ON OUR STEEL WHERE THERE ARE CHARGES WITHOUT WRITTEN APPROVAL