

FIRE DETECTION AND ALARM SYSTEM

FOR WALK WITH ME

28660 Montana Dr.
Locombe/La/70445

FIRE ALARM SYSTEM SEQUENCE OF OPERATION

ALARM

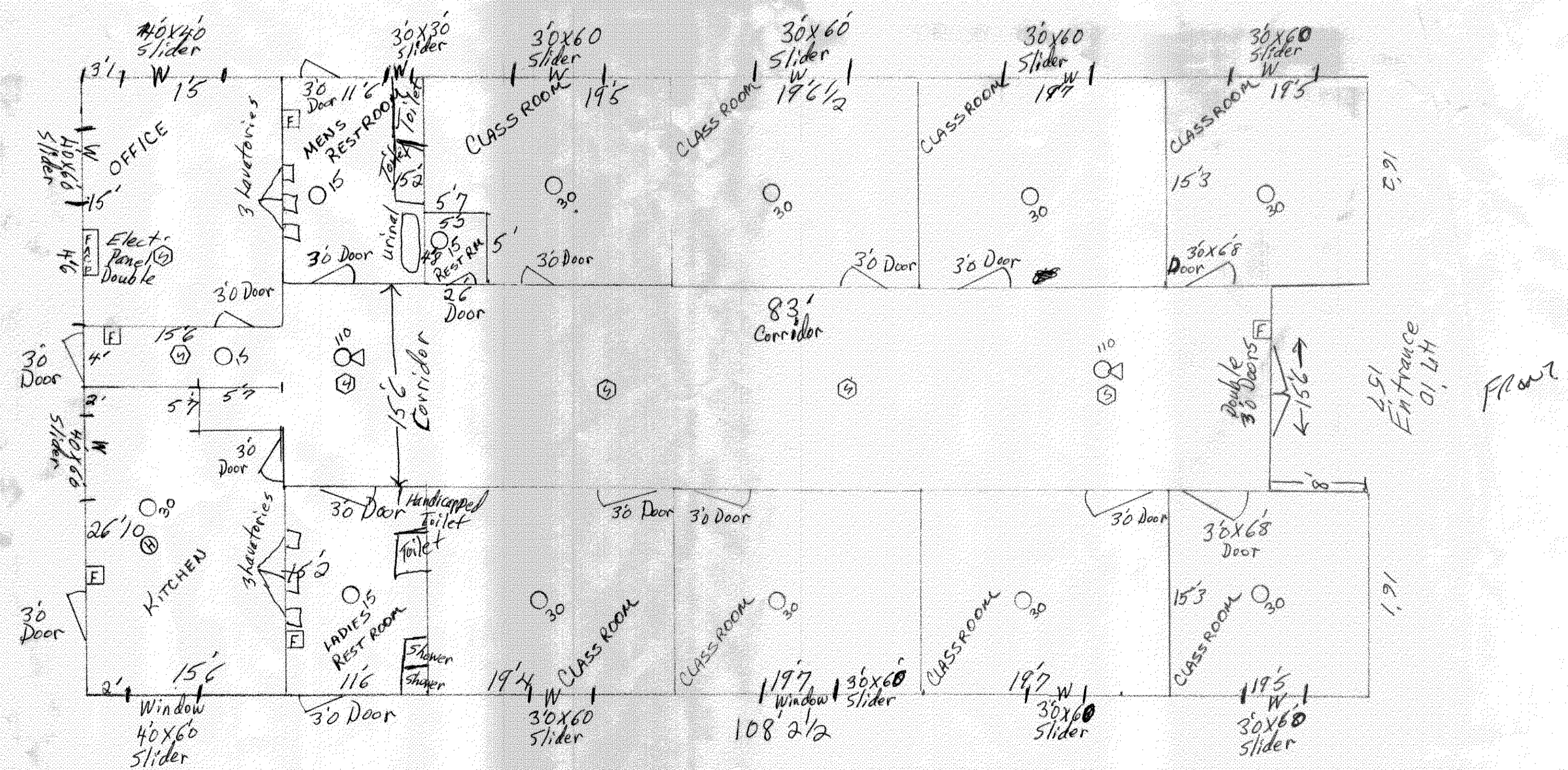
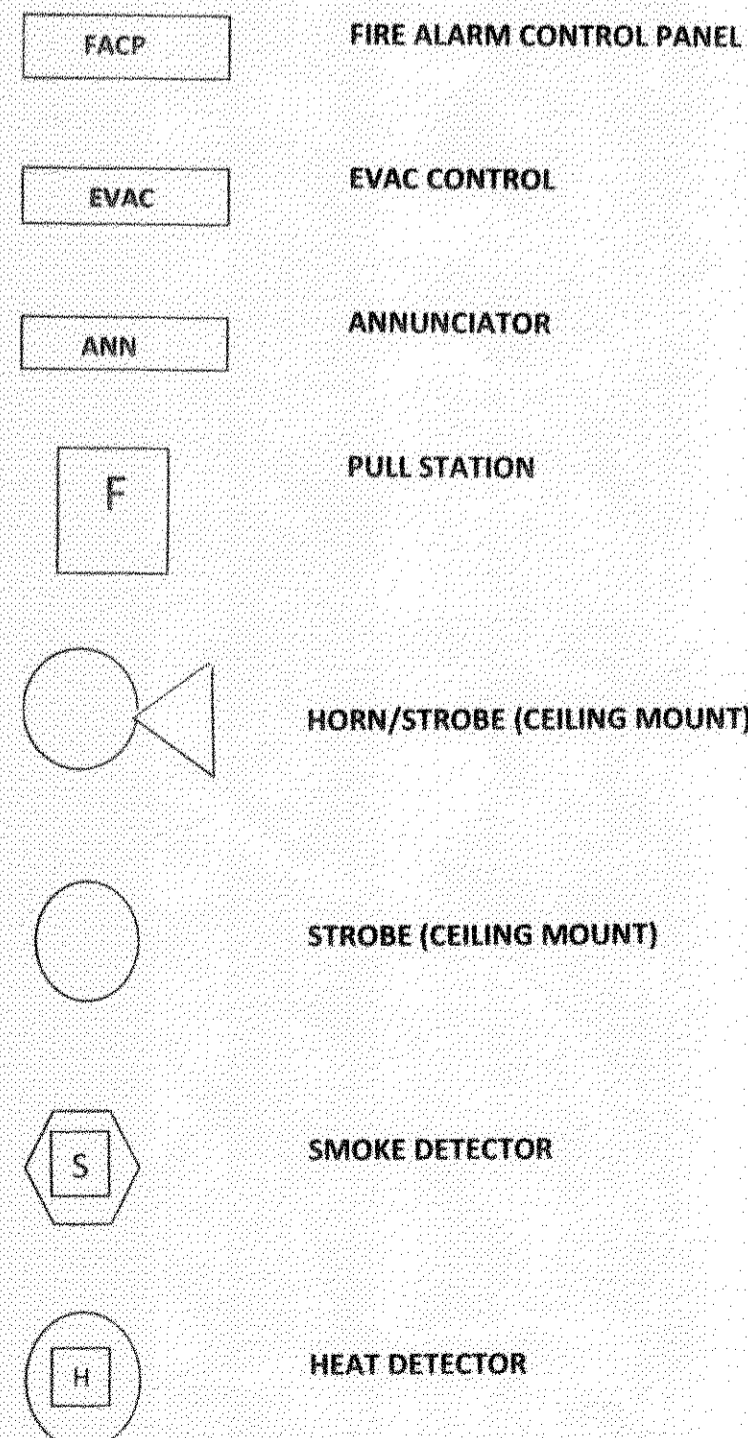
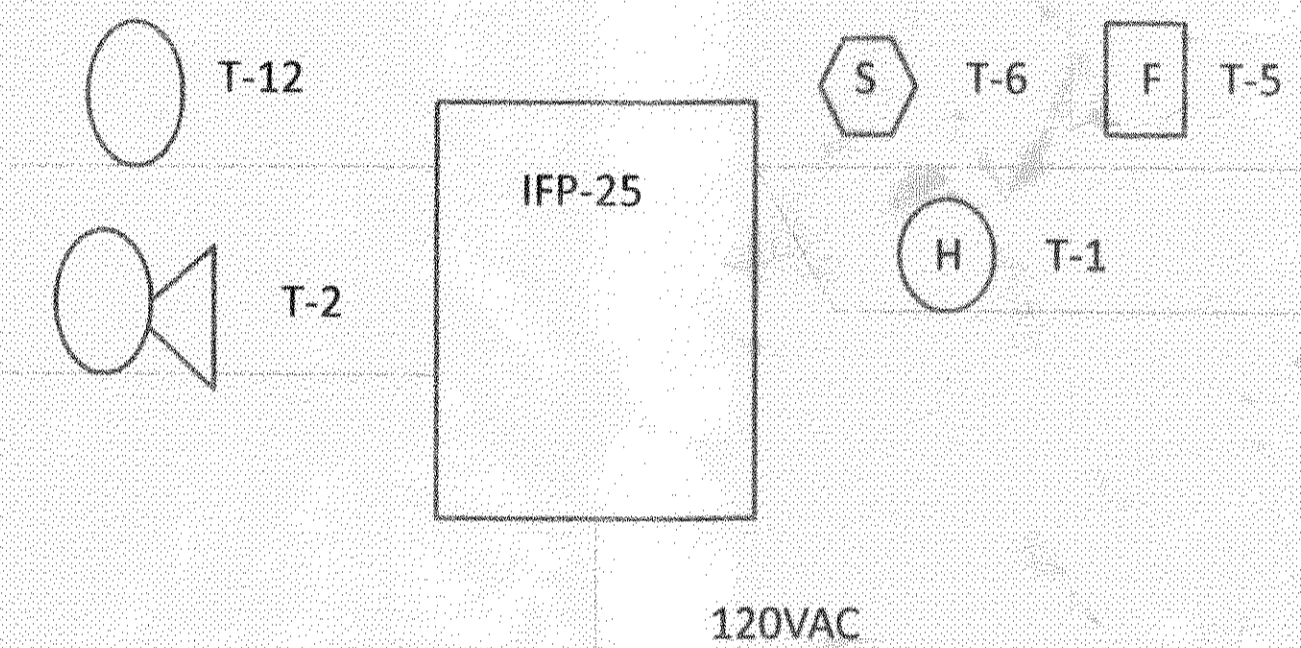
1. Activation of any Pull Station, Smoke, Heat Detector will cause the following actions to occur:
 - A) Turn on the Red L.E.D. Alarm Zone describing the device originating the alarm condition at the Control Panel.
 - B) Activate alarm relay to initiate the transmission of an alarm to Remote Station.
 - C) Activate Alarm Sounding Devices in area for purpose of initiating emergency action.
- Alarm to sound till system silenced at panel. Any subsequent alarm will reactivate the alarm notification devices.

TROUBLE

- A) Sound an audible signal at the Fire Control Panel.
- B) Activate trouble relay to initiate the transmission of a trouble to Remote Station.

SUPERVISORY

- A) Sound an audible signal at the Fire Control Panel.
- B) Activate supervisory relay to initiate the transmission of a supervisory to Remote Station.



OFFICE: 801 SOUTH OAK STREET, HAMMOND, LA. 70401
 MAILING: P.O. BOX 415, PONCHATOULA, LA. 70454
 PHONE: (985) 419-1040, FAX: (985) 419-1041

R.M. 1 W NO.C.A.
 Tommy Barnes
 28 years 985-966-5180
 EDUCATION I
 DRIVERS

SCALE: 1/4" = 1'	APPROVED BY: William Barnes	DRAWN BY: WPA
DATE: 9AUG10	REVISION:	DRAWING NUMBER: 90810