

**MCMATH CONSTRUCTION, INC**

2053 E. Gause Blvd  
Suite 150  
Slidell, LA 70461

PHONE: (985) 641-4148  
FAX: (985) 641-4155

**FAX COVER SHEET**

*Danny  
Call  
960-0807*

DATE: 4-25-07

TO: Chuck Damon FAX: 641-5950

FROM: Danny Brown RE: WGSO Radio

Number of pages including cover: 2

AS PER OUR CONVERSATION  
PLEASE TO SUBMIT TO FIRE MARSHALL  
AS SOON AS POSSIBLE.  
I NEED TO BE FINISHED BY MAY 21<sup>ST</sup>  
I NEED YOUR HELP.  
[Signature]



**NORMAN H. VOELKEL CONSTRUCTION INC.**

790 Asbury Drive  
Mandeville, LA 70471-1844

**FACSIMILE MESSAGE COVER SHEET**

TO: CHUCK  
CO: DANNON  
FAX NO.: 641 5950  
FROM: PAYSSE

Confirmation Phone No.: 985- 626-8782, Fax No.: 985-626-8783  
N.O. Direct: 504-468-8644

Total Number of Pages Including Cover Sheet: 2

COMMENTS:

SLIDEN WEST

IT LOOKS TO ME LIKE IF WE PUT A 2HR  
WALL BETWEEN 20A + 20B YOU COULD PUT  
A 2 HR WALL ON THE WEST DRIVING  
WALL OF THE RADIO STATION + WE COULD  
AVOID THE ANGLES AT THE FRONT WALL +  
THIS LEAVE THE STORE FRONT AS DRAWN

CALL WHEN YOU GET A CHANCE.

PAYSSE

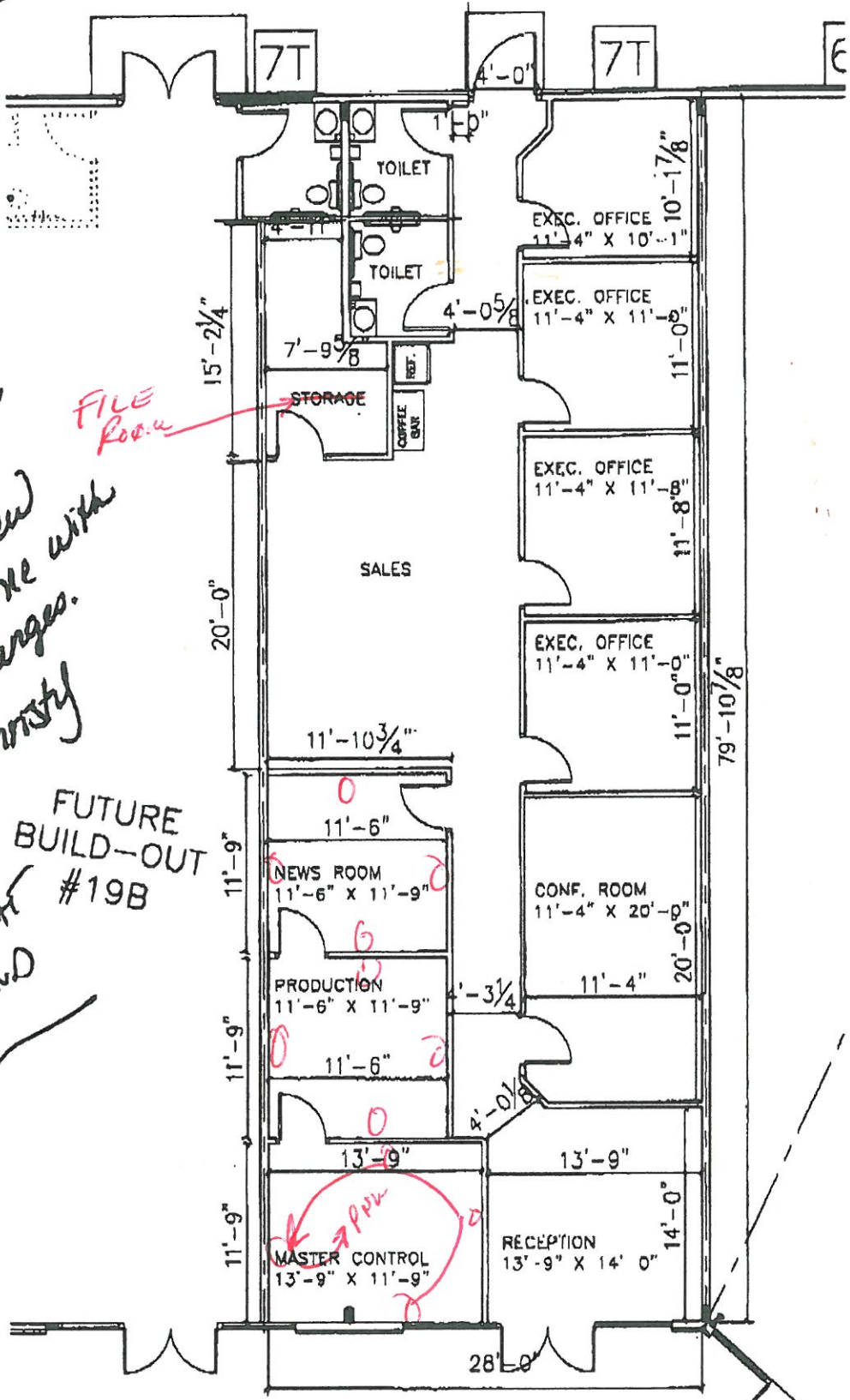
Sent By: \_\_\_\_\_

Date: 5/1/07

641-5950  
4-26-07

~~Donny~~  
Please Review  
& call me with  
any changes.  
To → Christy

Looks Great  
move forward  
YB



2304