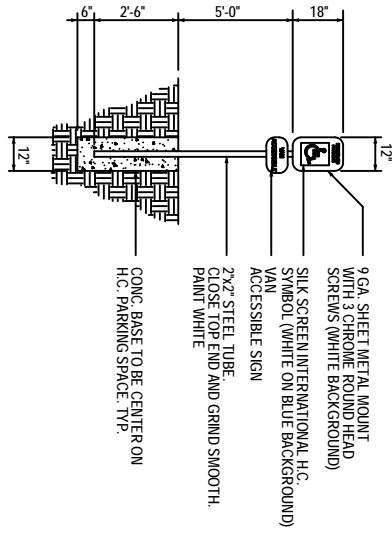
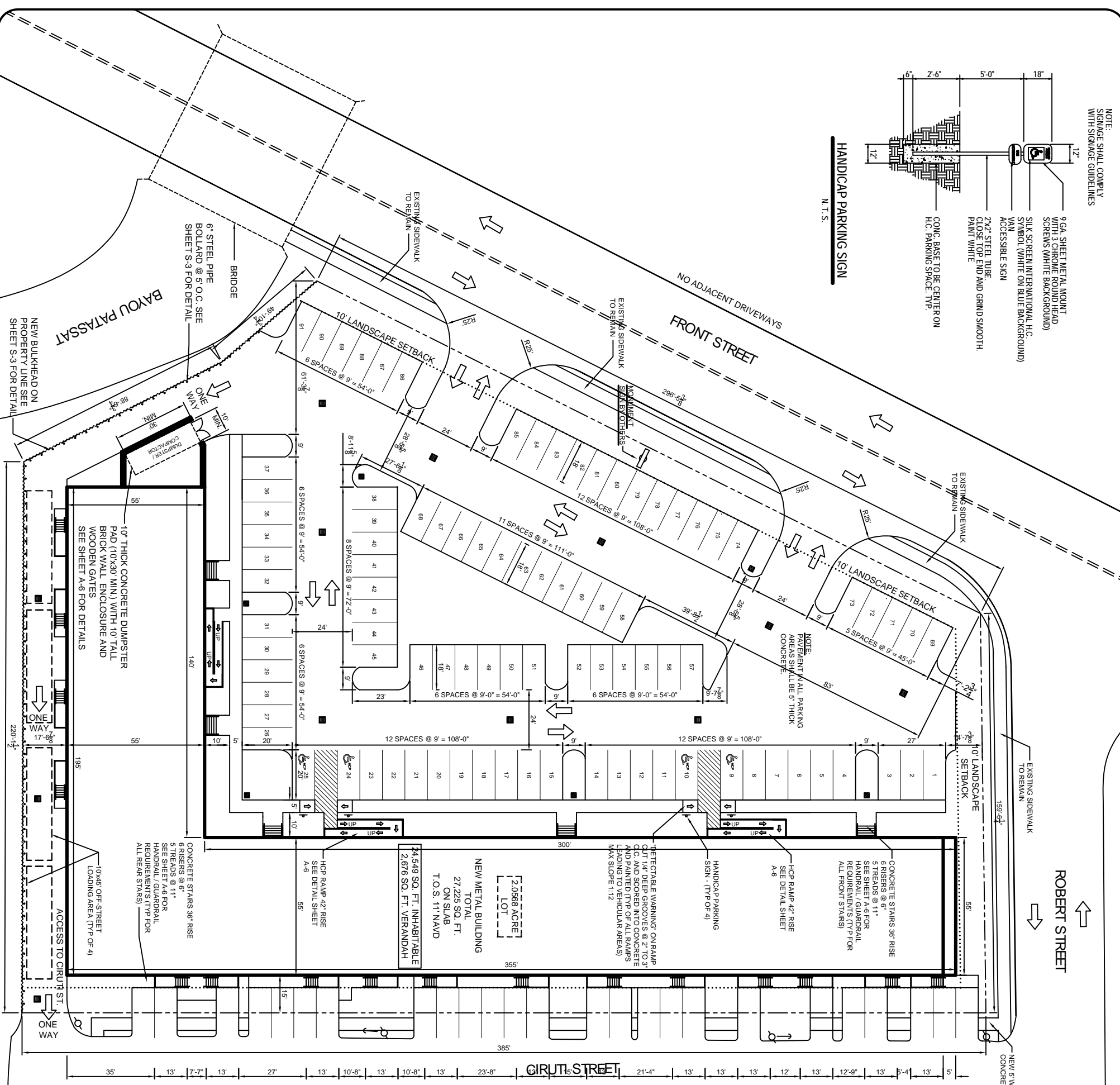


NOTE:
SIGNAGE SHALL COMPLY
WITH SIGNAGE GUIDELINES



HANDICAP PARKING SIGN
N.T.S.



ROBERT STREET

CIRUTI STREET

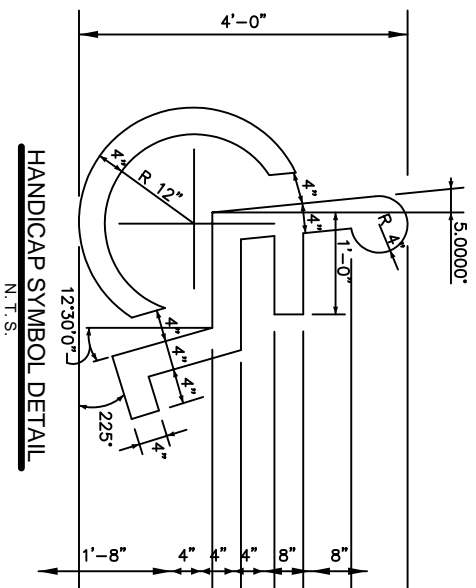
PARKING REQUIREMENTS
27,225 SQ. FT. TOTAL BUILDING AREA
REQUIRES: 1 PARKING SPACE / 300 SQ. FT. OF BUILDING AREA
TOTAL PARKING REQUIRED = 91 SPACES (4 HANDICAP)
TOTAL PARKING PROVIDED = 91 SPACES (4 HANDICAP)

SITE LIGHTING

EXTERIOR LIGHTING SHALL BE SHADDED OR UNIPOLARLY DIRECTED IN SUCH A MANNER SO THAT NO DIRECT LIGHTING OR GLARE BE CAST BEYOND THE PROPERTY LINE. THE INTENSITY OF SUCH LIGHTING SHALL NOT EXCEED ONE FOOT CANDLE AS MEASURED AT THE ABUTTING PROPERTY LINE. (N/A)

SITE PLAN NOTES

1. ROOFING MATERIAL: ASPHALT COMP. SHINGLE / METAL ROOFING PANEL.
2. SIDING MATERIAL: BRICK VENEER ON ALL FRONT EXTERIOR WALLS. CINDERBLOCK WALL WITH BRICK FINISH FOR ALL REAR EXTERIOR WALLS.
3. UTILITIES: ALL UTILITIES SHALL BE PLACED UNDERGROUND SEE SHEET C-7



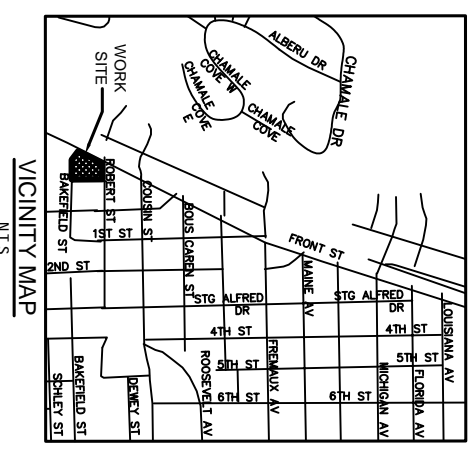
HANDICAP SYMBOL DETAIL
N.T.S.

ANCHORED TRASH RECEPTACLE INFORMATION
MATERIAL: CONCRETE
COLOR: BROWN
CAPACITY: 30 LB
QTY: 6
(VERIFY STYLE WITH OWNER)

BUILDING COLOR SCHEDULE	
DESCRIPTION	COLOR
HEAD	OLE CARABA (FROM ST. JOE BRICK)
HANDRAILS/GUARDRAILS	RUSTIC (CENTRAL STATES MANUFACTURER - CENTRAL GUARD)
RECEPTACLE FINISH VENT	AGED BARK - LANDMARK PREMIUM
DETAIL ROOFING MATERIAL	POPULAR GRAY SW 6071
SYMBOL/MOUNTINGS	BLACK
REAR EXTERIOR WALLS	GARRET GRAY SW 6075
W/ BRICK FINISH	

- LEGEND**
- PROPERTY LINE
 - SETBACK
 - NEW BUILDING OUTLINE
 - NEW BULKHEAD
 - HANDICAP PARKING
 - HANDICAP PARKING SIGN
 - CONC. WASTE RECEPTACLE
 - TRAFFIC FLOW DIRECTION

SITE PLAN
SCALE: 1" = 20'-0"



NEW STRIP MALL

DAMMON ENGINEERING, INC.

1095 FLORIDA AVENUE 985-649-5832 SLIDELL, LA. 70458
DAMMONENGINEERING.COM

REINE CONSTRUCTION CORP.
FRONT STREET
SLIDELL, LOUISIANA

SCALE: AS NOTED

FILE: C-2

JOB NO. 1816

DATE: 6-1-07

SHEET 3 OF 20