

THIS SIDE IS OCCUPIED WITH BUSINESS TYPE CLASSIFICATIONS AS IT IS A STRIP MALL BUILT IN 1979.

EXISTING FLOOR PLAN

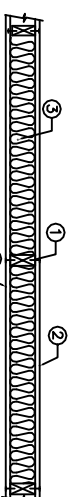
SCALE: 1/16"=1'-0"

NOTES:

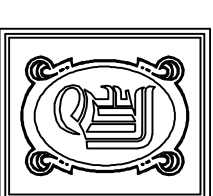
- 1) NO A/C WORK SHALL BE DONE.
- 2) NO PLUMBING WORK SHALL BE DONE.
- 3) THE CEILING GRID INTO NEW TENANT SEPARATION WALL.
- 4) RELOCATE EXISTING POWER OUTLETS WITHIN NEW WALL LOCATION.
- 5) ALL DOORS AND EXIT SIGNS TO REMAIN AS IS.
- 6) PROVIDE NEW WALL AS PER PLAN # DETAIL. FINISH AS PER OWNERS REQUIREMENTS.

EXISTING NON CONFORMING REST ROOMS TO REMAIN AS IS.

DESIGN NO. U333
BEARING WALL RATING- 1 HR.
FINISH RATING- 23 MIN.



1. WOOD STUDS:
NOM. 2 BY 4 IN., SPACED 16 IN. O.C. EFFECTIVELY CROSS BRACED.
2. GYPSUM BOARD:
5/8 IN. THICK, 4 FT. WIDE, APPLIED EITHER VERTICALLY OR HORIZONTALLY, SCREW ATTACHED TO STUDS AND PLATES WITH 1/4 IN. LONG TYPE W STEEL SCREWS, SPACED 12 IN. O. C.
AMERICAN GYPSUM CO.- TYPES AG-C, AGX-C.
BFB AMERICA, INC.- PRO ROC TYPE C.
CANADIAN GYPSUM COMPANY- TYPES C, IP-X2, IPCAR.
G-P GYPSUM CORP., SUB. OF GEORGIA PACIFIC CORP.- TYPE 5.
LAFARGE NORTH AMERICA, INC.- TYPES FSW-C, LGFC-GA.
NATIONAL GYPSUM CO.- TYPES FSW-C, FSW-G.
FABCO GYPSUM, DIV. OF PACIFIC COAST BUILDING PROD., INC.- TYPE C OR PG-C.
STANDARD GYPSUM, LLC- TYPE SG-C.
TEMPLE-INLAND FOREST PRODUCTS CORP.- TYPE TG-C.
UNITED STATES GYPSUM CO.- TYPES C, IP-X2, IPCAR.
USG MEXICO S A DE C V- TYPES C, IP-X2, IPCAR.
3. BATTIS AND BLANKETS: (OPTIONAL)-
MINERAL WOOL INSULATION, PARTIALLY OR COMPLETELY FILLING STUD CAVITY.
THERMAFIBER LLC- TYPE SA7B.
3A. FIBER, SPRAYED:
AS AN ALTERNATE TO BATTIS AND BLANKETS (ITEM 3)- SPRAY APPLIED CELLULOSE INSULATION MATERIAL. THE FIBER IS APPLIED WITH WATER TO COMPLETELY FILL THE ENCLOSED CAVITY IN ACCORDANCE WITH THE APPLICATION INSTRUCTIONS SUPPLIED WITH THE PRODUCT. NOMINAL DRY DENSITY OF 3.0 LB/FT³.
U. S. GREENFIBER LLC- COCOON STABILIZED CELLULOSE INSULATION.
3B. FIBER, SPRAYED:
AS AN ALTERNATE TO BATTIS AND BLANKETS (ITEM 3) AND ITEM 3A- SPRAY APPLIED CELLULOSE INSULATION MATERIAL. THE FIBER IS APPLIED WITH WATER TO INTERIOR SURFACES IN ACCORDANCE WITH THE APPLICATION INSTRUCTIONS SUPPLIED WITH THE PRODUCT. APPLIED TO COMPLETELY FILL THE ENCLOSED CAVITY. MINIMUM DRY DENSITY OF 4.3 POUNDS PER CUBIC FT.
NU-WOOL CO., INC.- CELLULOSE INSULATION.
4. JOINTS AND NAHHEADS:
WALLBOARD JOINTS COVERED WITH PAPER TAPE AND JOINT COMPOUND.
*BEARING THE UL CLASSIFICATION MARK



DAMMON
ENGINEERING, INC.

CHIEF ENGINEER
EMMETT
DAMMON, P.E.
CHIEF ARCHITECT
ROBERT
WILTSE

554 OLD SPANISH TRAIL
SLIDELL, LA. 70456
OFFICE: 985-649-5832
FAX: 985-641-5950

WEBSITE:
WWW.DAMMONENGINEERING.COM
EMAIL:
DAMMONENG@BELLOUTH.NET

ARCHITECTURE
ENGINEERING
STUDIES
PLANNING
INVESTIGATION
EXPERT WITNESS

6116 ROBERT
BOULEVARD
SLIDELL, LA

TENANT BUILD OUT
FOR
DANCO
CONSIGNMENT

FLOOR
PLAN

REV:

SCALE:

JOB#:

DATE: 06-19-12

SHEET 1

A-1

OF 1