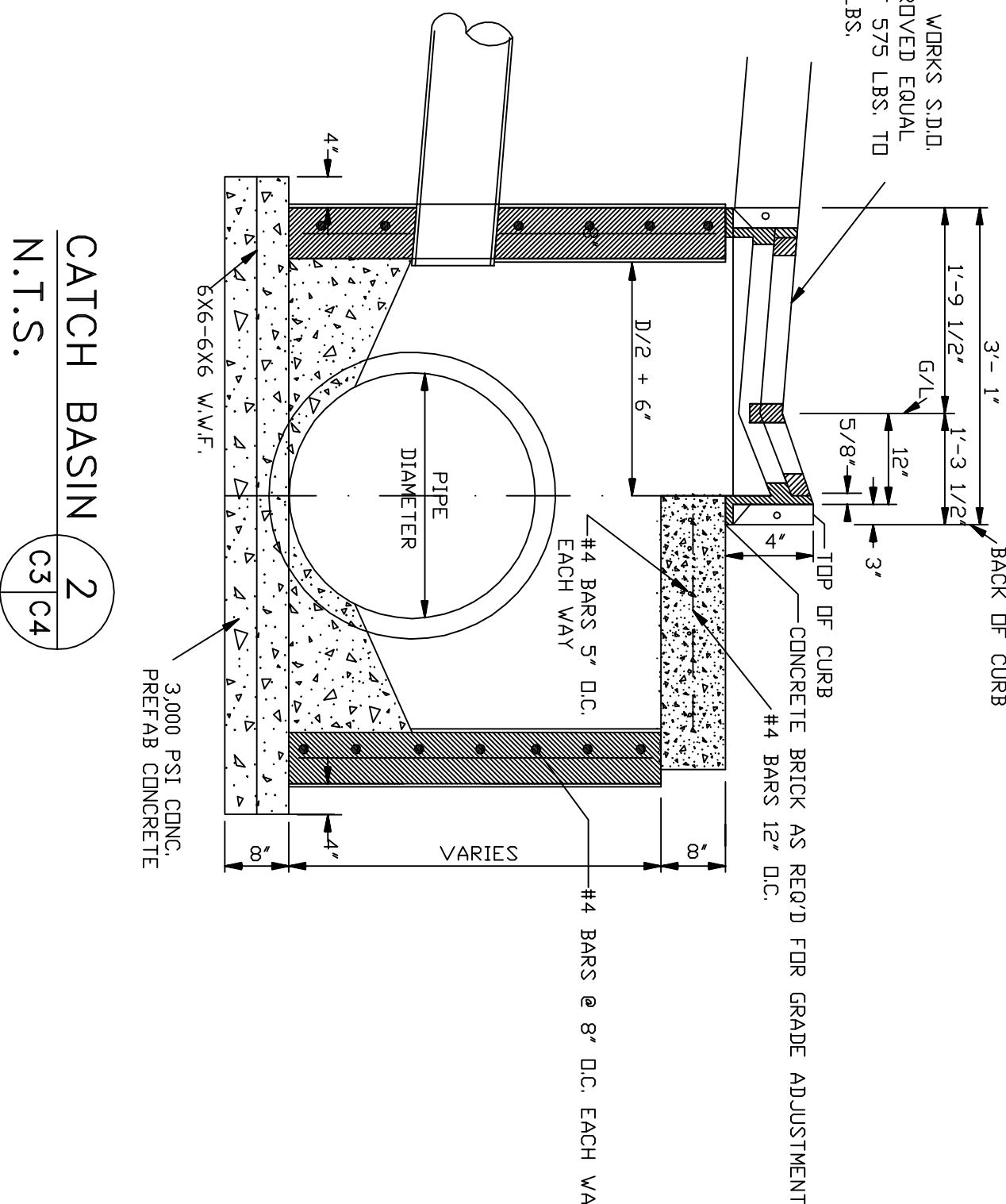


REGALUSA IRON WORKS S.P.D.
 MDI 2 DR APPROVED EQUAL
 APPRDX. WEIGHT 575 LBS. TO
 600 LBS.



CATCH BASIN 2
 N.T.S. (C3) (C4)

DIVISION II. TECHNICAL PROVISIONS

SECTION 1. STREETS

1.0 SCOPE OF WORK.

THE WORK COVERED BY THESE SPECIFICATIONS INCLUDES THE REMOVAL OF EXISTING MATERIALS AND THE CONSTRUCTION OF BASE COURSE AND CONCRETE PAVING IN THE LOCATIONS SHOWN ON THE DRAWINGS. THE CONTRACTOR SHALL FURNISH ALL LABOR, MATERIALS, SUPERVISION, EQUIPMENT AND SERVICES NECESSARY TO COMPLETE THE WORK AND LEAVE EACH SITE IN A "BROOM CLEAN" CONDITION.

2.0. EXCAVATION AND SITE PREPARATION.

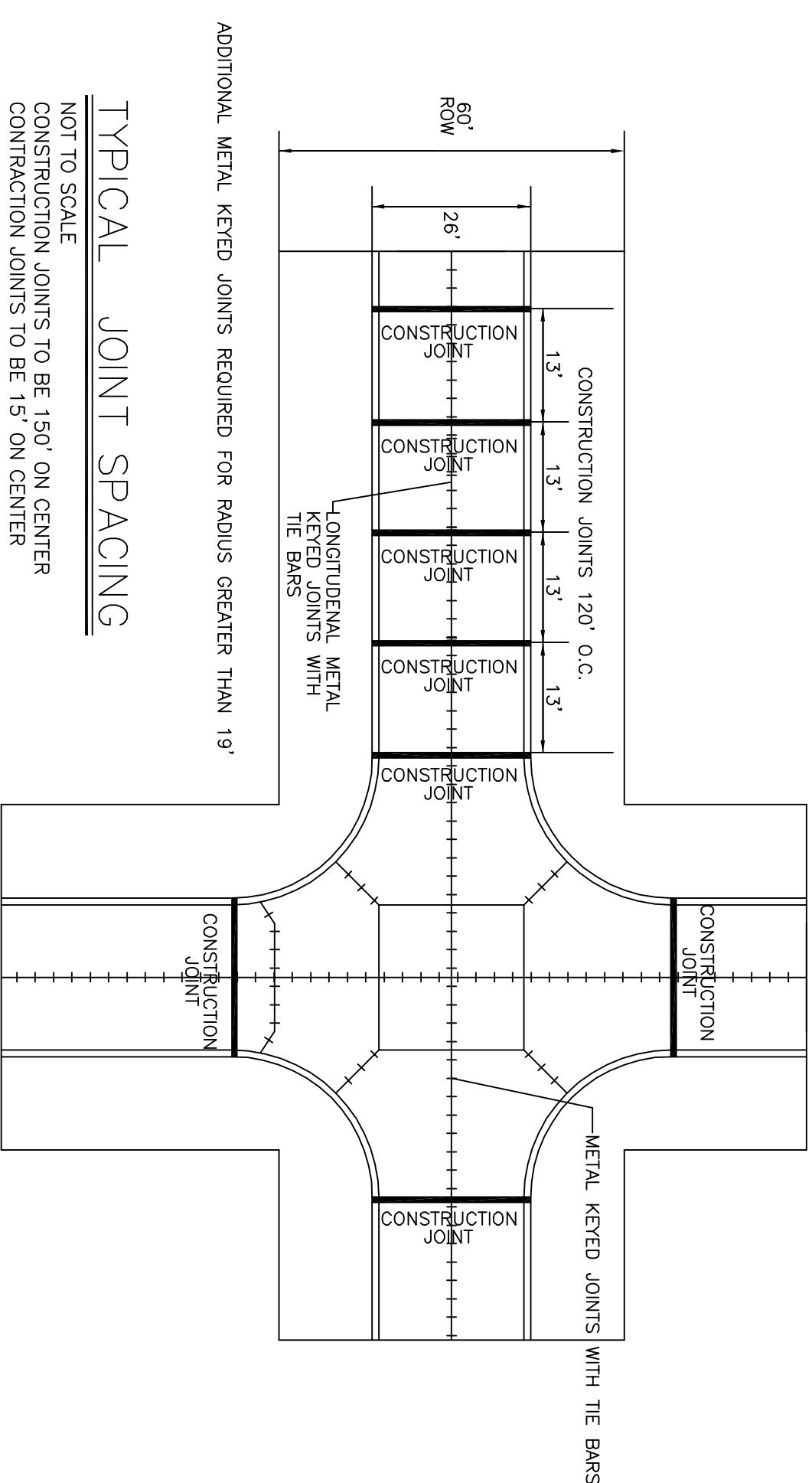
- 2.1. THIS ITEM CONSISTS OF EXCAVATION OF SITE AS NECESSARY TO PERMIT CONSTRUCTION OF AN EIGHT-INCH MINIMUM THICKNESS SAND BASE COURSE.
- 2.2. THE CONTRACTOR SHALL REMOVE AND DISPOSE OF ALL MATERIALS IN THE LOCATION OF THE PROPOSED PAVEMENT SECTIONS TO A MINIMUM DEPTH OF 14 INCHES FROM THE GRADE OF THE PROPOSED PAVEMENT.
- 2.3. THE CONTRACTOR SHALL COMPACT THE EXPOSED SURFACE TO A MINIMUM OF SIX INCHES DEPTH AS FOLLOWS:
 - (a) FOR COHESION LESS SANDS AND GRAVELS—100 PERCENT OF MAXIMUM MODIFIED AASHO DENSITY.
 - (b) FOR ALL OTHER SOILS—90 PERCENT OF MAXIMUM MODIFIED AASHO DENSITY.

3.0. SOIL BASE COURSE.

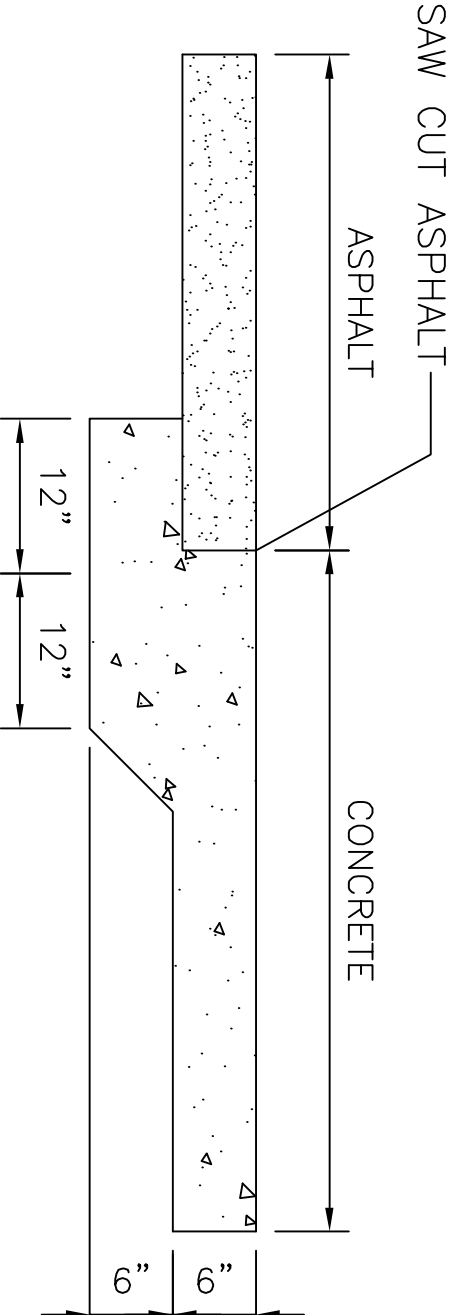
- 3.1. THIS ITEM CONSISTS OF PLACEMENT AND COMPACTING OF A BASE COURSE, A MINIMUM OF SIX INCHES THICK, ON ALL SITES IN THE PROJECT.
- 3.2. SOIL TO BE USED FOR BASE COURSE WILL BE A WELL-GRADED SOIL MEETING THE FOLLOWING REQUIREMENTS:
 - (a) MAXIMUM PARTICLE SIZE: THREE-FOURTHS INCHES
 - (b) PERCENT PASSING NO. 200 SIEVE: 15 PERCENT MAXIMUM
 - (c) PERCENT PASSING NO. 40 SIEVE: 8 PERCENT MAXIMUM
 - (d) PLASTICITY INDEX: 8 PERCENT MAXIMUM
- 3.3. THE CONTRACTOR SHALL COMPACT THE BASE COURSE TO A MINIMUM OF 100 PERCENT OF MAXIMUM MODIFIED AASHO DENSITY.
- 3.4. EQUIPMENT. ALL EQUIPMENT USED SHALL BE SUITABLE FOR THE PURPOSE INTENDED AND SHALL BE IN GOOD OPERATING CONDITION. EQUIPMENT NOT SATISFACTORY OR ADAPTABLE TO THE WORK SHALL BE REMOVED FROM THE SITE.
 - 3.4.1. THE MINIMUM EQUIPMENT REQUIRED SHALL BE:
 - (a) A BLADE GRADER WEIGHING NOT LESS THAN THREE TONS AND HAVING A BLADE AT LEAST TEN FEET IN LENGTH AND A WHEEL BASE OF NOT LESS THAN 15 FEET.
 - (b) TRACTORS WITH CLEARED TRACKS WEIGHING NOT LESS THAN TEN TONS.
 - (c) (1) SHEEPS' FOOT ROLLERS OF THE MULTIPLE UNIT OSCILLATING TYPE WITH CRAWLER TRACTOR. EACH UNIT OF THE DRUM SHALL CONSIST OF A DRUM PROVIDED WITH TAMPING FEET NOT LESS THAN SEVEN INCHES LONG AND EQUIPPED WITH TEETH CLEANING DEVICES. THE ROLLER SHALL WEIGH NOT LESS THAN 50 POUNDS PER LINEAR INCH OF DRUM LENGTH WITHOUT BALLAST, AND WITH THE DRUMS ENTIRELY FILLED WITH BALLAST. THE ROLLER SHALL WEIGH NOT LESS THAN 50 PERCENT MORE THAN WHEN EMPTY. THE PRESSURE PER SQUARE INCH OF TAMPING AREA WITH ONE ROW OF TAMPING FEET SUPPORTING THE ROLLER, SHALL NOT BE LESS THAN 110 POUNDS WITHOUT BALLAST.
 - (2) THE SHEEP'S FOOT ROLLER SHALL BE OF THE SIZE, SHAPE AND WEIGHT BEST SUITED TO GIVE THE REQUIRED DENSITIES IN THE MATERIALS BEING COMPACTED. IN GENERAL, SANDY SOILS WILL REQUIRE UNIT PRESSURES OF 50 TO 100 POUNDS PER SQUARE INCH WITH TAMPING FEET OF TEN TO 12 SQUARE INCH AREA. SANDY LOAMS AND LIGHT CLAYS WILL REQUIRE UNIT PRESSURES OF 100-150 POUNDS PER SQUARE INCH.

4.0. CONCRETE PAVEMENT.

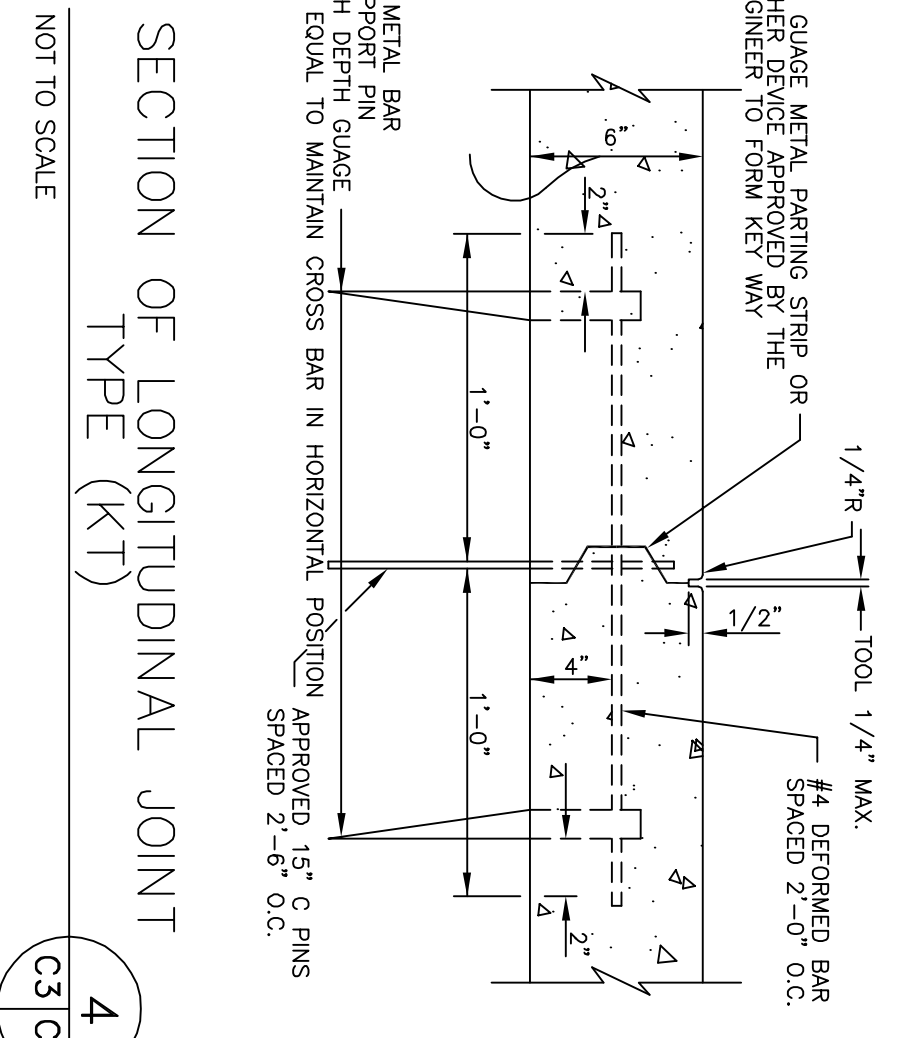
- 4.1. THIS ITEM CONSISTS OF THE PLACEMENT OF A 4,000 psi TEST PORTLAND CONCRETE PAVEMENT, A MINIMUM OF EIGHT INCHES THICK, ON MAJOR AND COLLECTOR STREETS AND A MINIMUM OF SIX INCHES THICK ON MINOR STREETS.
- 4.2. NO CONCRETE SHALL BE PLACED UNTIL THE BASE HAS BEEN APPROVED BY THE CITY ENGINEER OR HIS DESIGNATED INSPECTOR.
- 4.3. MATERIALS:
 - 4.3.01. PORTLAND CEMENT SHALL CONFORM TO ASTM C-150 TYPE 1, LATEST REVISION.
 - 4.3.02. SAND SHALL CONSIST OF CLEAN, SOUND, DURABLE GRAINS, FREE FROM DUST, DIRT, CLAY OR HARMFUL SUBSTANCES.



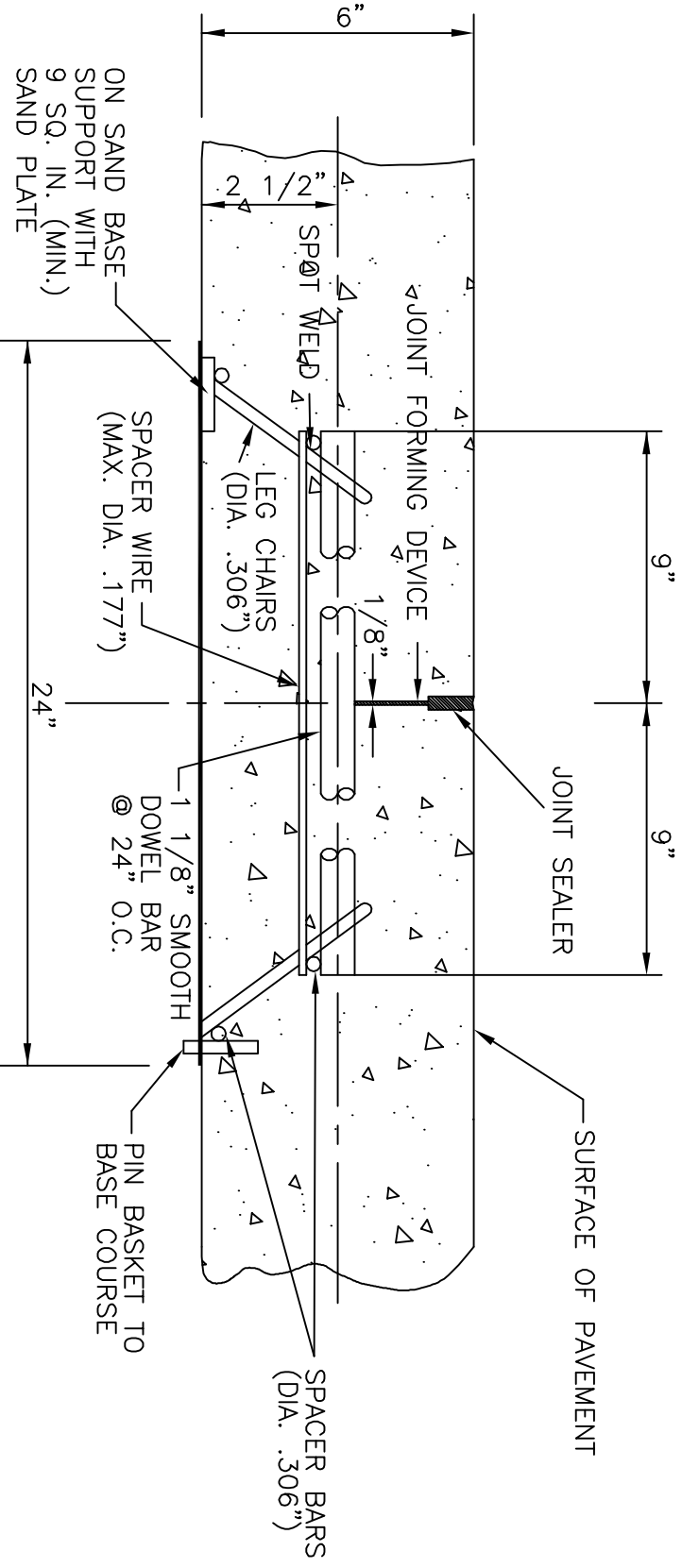
TYPICAL JOINT SPACING
 NOT TO SCALE
 CONSTRUCTION JOINTS TO BE 150' ON CENTER
 CONSTRUCTION JOINTS TO BE 15' ON CENTER



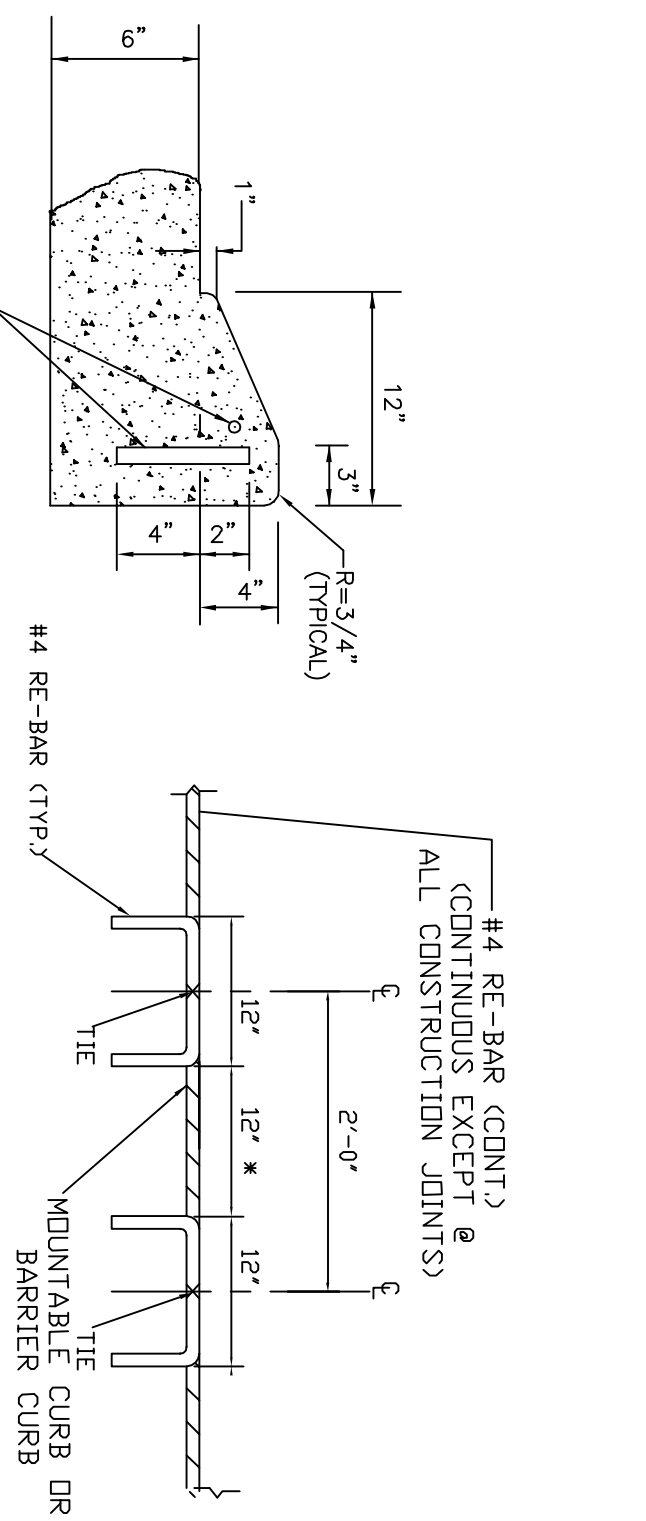
ASPHALT/CONCRETE JUNCTION
 N.T.S.



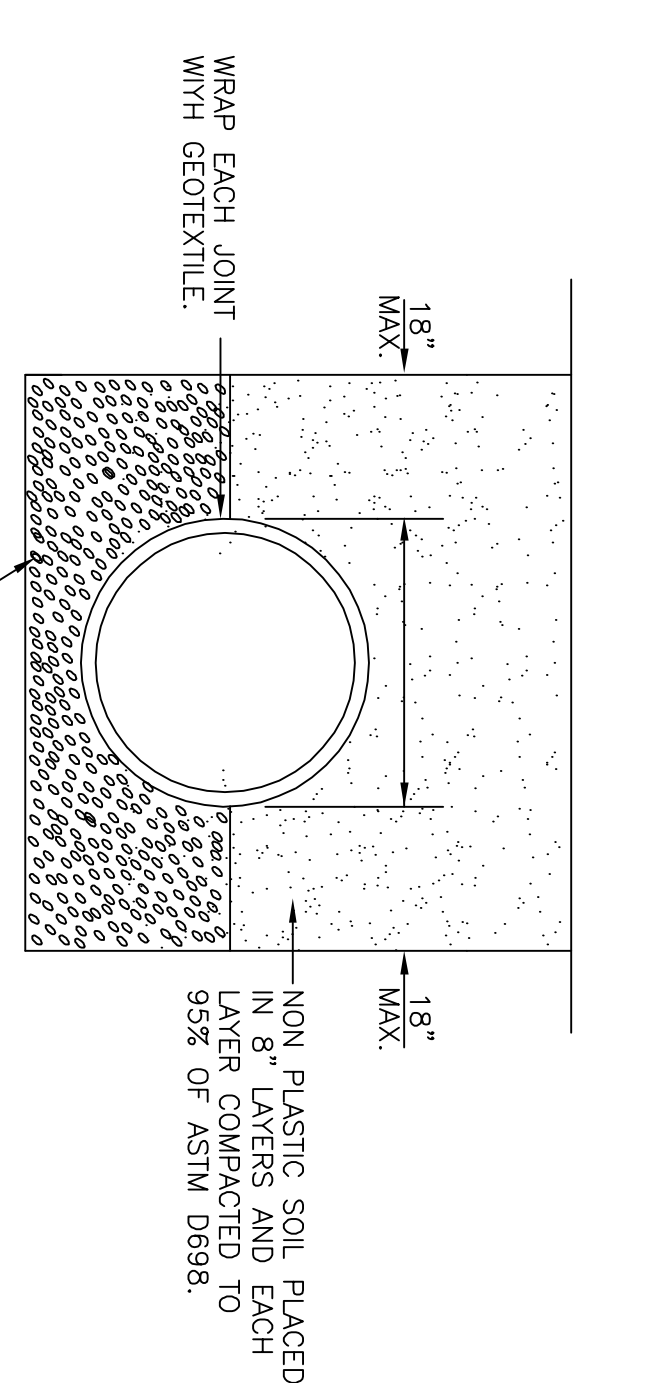
SECTION OF LONGITUDINAL JOINT
 TYPE (KT)
 NOT TO SCALE (C3) (C4)



TRANSVERSE CONTRACTION JOINT
 OR CONSTRUCTION JOINT
 TYPE (CJ)
 NOT TO SCALE (C3) (C4)



BAR DETAIL
 SHOWING DIMENSIONS AND SPACING OF #4 REINFORCING STEEL BARS FOR CONC. CURB
 NOT TO SCALE

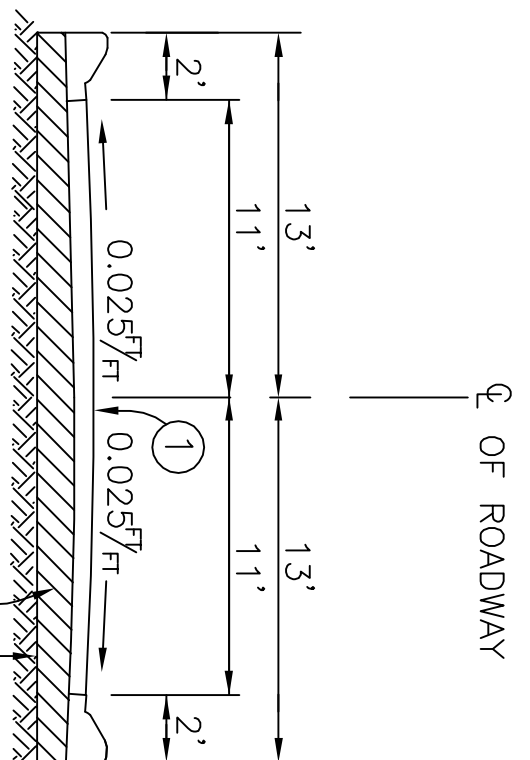


TYPICAL DRAIN PIPE BEDDING DETAIL
 NOT TO SCALE

PORTLAND CEMENT CONCRETE PAVING NOTES:

1. ALL WORK SHALL COMPLY WITH APPLICABLE PROVISIONS OF THE STATE OF LOUISIANA DEPARTMENT OF TRANSPORTATION AND DEVELOPMENT'S LATEST EDITION "LOUISIANA STANDARD SPECIFICATIONS FOR ROADS AND BRIDGES" (DOTD), EXCEPT AS MODIFIED HEREIN.
2. WHENEVER THE "DEPARTMENT" IS REFERENCED IN DOTD, CHANGE TO READ THE "OWNER" AS APPLICABLE THROUGHOUT.
3. ALL MATERIALS SHALL COMPLY WITH THE DOTD SECTIONS ENTITLED "PORTLAND CEMENT CONCRETE PAVEMENT", "CONCRETE WALKS, DRIVES, AND INCIDENTAL PAVING", AND "CURBS AND GUTTERS", AND PART "BASE COURSE" AS REQUIRED.
4. THE COMPRESSIVE STRENGTH OF THE CONCRETE AT 28 DAYS SHALL BE 4,000 PSI. THE PAVEMENT SHALL NOT BE OPENED TO TRAFFIC UNTIL A COMPRESSIVE STRENGTH OF 3,000 PSI IS ATTAINED AND IN NO CASE SHALL THE PAVEMENT BE OPENED TO TRAFFIC WITHIN A THREE (3) DAY PERIOD AFTER THE CONCRETE HAS BEEN PLACED. THE CONCRETE SHALL ALSO HAVE 7 SACKS OF CEMENT PER CUBIC YARD AND A 2" TO 4" SLUMP RANGE. THE USE OF FLY ASH IN THE MIX WILL NOT BE PERMISSIBLE.
5. JOINT SEALERS SHALL BE A HOT Poured RUBBERIZED ASPHALT ACCORDANCE WITH SECTION 1005.02 (c) OF THE DOTD STANDARD SPECIFICATION.
6. WORKMANSHIP: ALL WORKMANSHIP SHALL COMPLY WITH THE DOTD SECTIONS LISTED ABOVE. THE FINAL ROADWAY SURFACE SHALL BE A "DRAG FINISH" AS DEFINED IN THE DOTD STANDARD SPECIFICATIONS.
7. ACCEPTANCE OF WORK: WORK WILL NOT BE ACCEPTABLE IF IT DOES NOT MEET THE REQUIREMENTS FOR 100 PERCENT PAYMENT, AS INDICATED IN DOTD, AND AS INSPECTED BY THE CITY OF SLIDELL.
8. CLEANING: AFTER COMPLETION OF PAVING OPERATIONS, CLEAN SURFACES OF EXCESS OF SPILLED MATERIALS IN A WORKMANLIKE MANNER.

- LEGEND: PAVING**
- ① 6" OF PORTLAND CEMENT CONCRETE 28 DAY, COMPRESSIVE STRENGTH OF 4000 PSI
 - ② 6" OF COMPACTED SAND SUBBASE OR 6" OF LIME TREATED SUBGRADE
 - ③ EXISTING GROUND



TYPICAL STREET CROSS SECTION
 NOT TO SCALE

NOTE: PROVIDE SERVICES OF SOILS ENGINEER FOR SOILS REPORT AND BASE DESIGN THICKNESS OF CEMENT STABILIZATION TO BE DETERMINED AFTER GRADATION, DENSITY TEST AND CORE DATA IS FURNISHED BY SOILS ENGINEER OR TESTING LABORATORY.