

**STATE OF LOUISIANA**  
Department of Public Safety and Corrections  
Office of State Fire Marshal Code Enforcement and Building Safety  
8181 Independence Boulevard  
Baton Rouge, Louisiana 70806  
225-925-4920

HENRY H. FRY  
DEPUTY ASSISTANT SECRETARY

**NEW CONSTRUCTION**

ROBERT SOLLBERGER  
ROBERT SOLLBERGER, ARCHITECT  
150 CHAMALE DR  
SLIDELL, LA 70460-0000

RE: P0300916  
SOUTHSIDE CAFE  
3154 PONCHARTRAIN DR  
SLIDELL, LA 70458-0000

NFPA 101, 2003

ASSEMBLY 300 OCCUPANTS OR LESS

Dear Applicant:

This is to advise that we have reviewed the drawings and specifications for the subject proposed construction and have determined that they appear to satisfactorily comply with the adopted laws, codes, rules and regulations of The State Fire Marshal subject to the following requirements:

- 1. LRS 40:1728 The State Uniform Construction Code is enforced as promulgated by local political subdivisions of the state. Contact the local building official of the applicable local political subdivision to coordinate compliance with State Uniform Construction Code requirements.**

NOTE: THE COMMENTS LISTED BELOW IDENTIFY APPARENT DEFICIENCIES DETECTED IN OUR REVIEW OF THE DOCUMENTS SUBMITTED.

- 2. 101:7.2.1.3 Provide landings outside exterior doors level with the interior finish floor.**
- 3. 101:7.2.2.4.1 Stairs and ramps shall have handrails on both sides and shall be provided within 30 inches of all portions of the required egress width of stair.**
- 4. LRS 40:1651 Submit chemical fire suppression system shop drawings with plan review application and fee prior to installation of any work of this section. Such work shall not commence until shop drawings have been found to be in compliance with applicable codes by this office. Submittal shall include a copy of this letter and shall be in accordance with the rules for such by this office. (Systems include hoods, halon, wet or dry chemical systems, etc.)**
- 5. NOTE: HOOD CONSTRUCTION IS NOT AUTHORIZED until a satisfactory review by this office is performed for determining compliance with minimum code requirements. Compliance with NFPA 96, regarding cooking hood construction/installation, cannot be determined with the documents received. (A copy of the "Kitchen Exhaust Hood/Duct/Suppression System Requirements" is enclosed for your use). The following specific information was not apparently provided:**

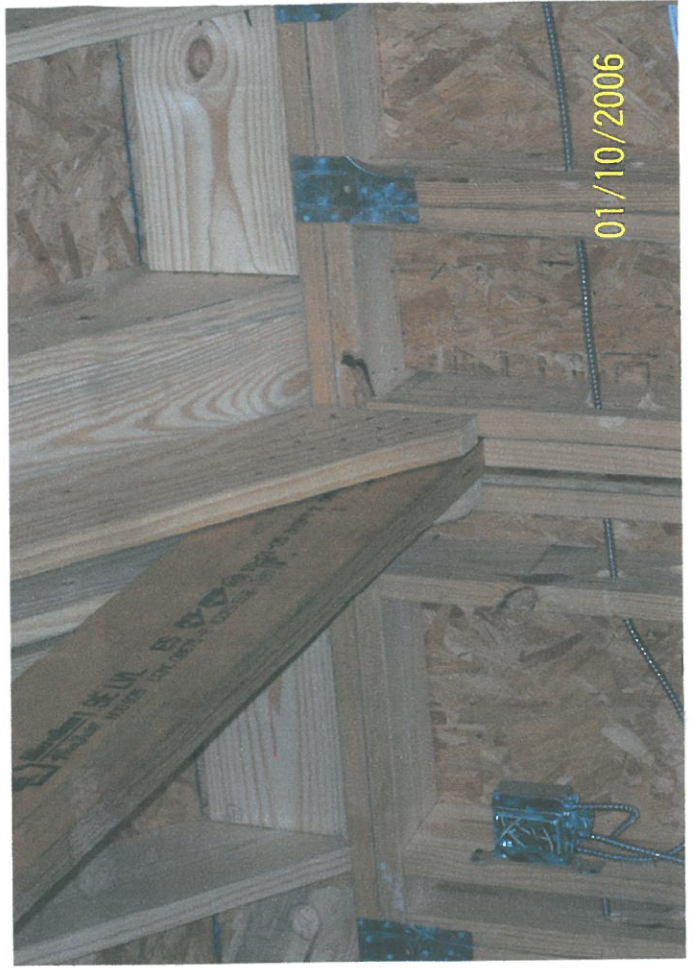
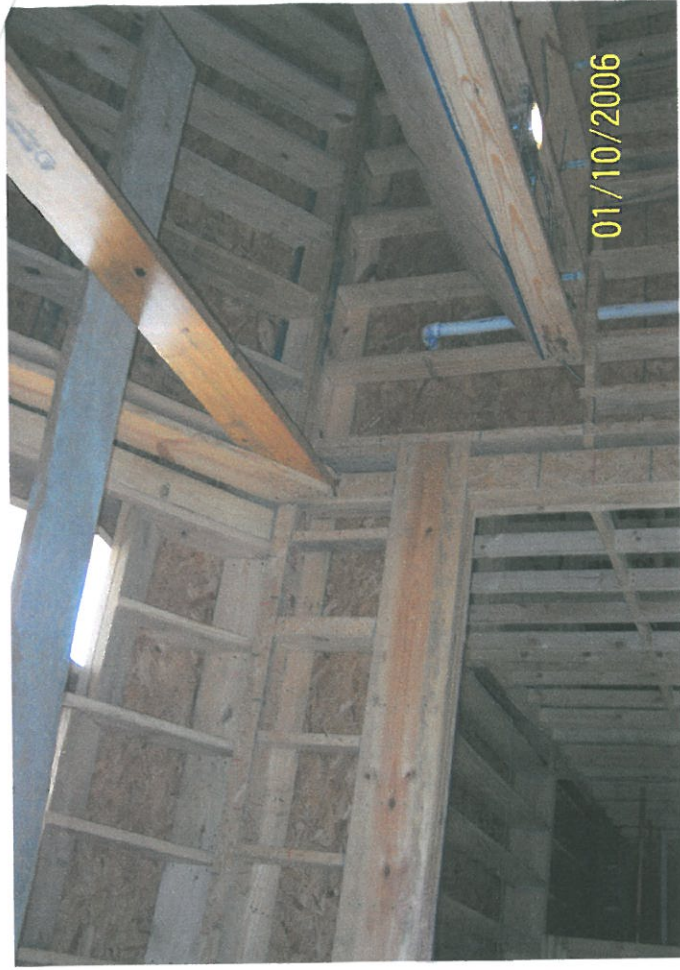
Nov 8, 2005  
P0300916 - PAGE 1

- a. Hood and duct sizes, metal type and gauge (thickness).
  - b. The type of construction at the walls, attic and roof adjacent to the hood and duct.
  - c. The clearance between the hood and surrounding walls and ceiling.
  - d. The clearance between the exhaust duct and surrounding structure at the ceiling, the attic, and the roof.
  - e. The clearances at the exhaust fan assembly.
  - f. Exhaust fan and make-up air fan (CFM) capacities and duct sizes.
6. **101:12.3.2 Separate STORAGE from other parts of the building by 1 hour fire resistive construction with self-closing 45 minute labeled door/frame assembly or provide automatic sprinkler protection in accordance with Section 9.7 and smoke partitions with self-closing doors in accordance with 8.7.1.2 and 8.4. (Sprinkler piping for isolated hazardous areas connected to domestic water supply shall comply with 101:9.7.1.2).**
  7. **101:12.2.9 Provide emergency lighting according to NFPA 101:7.9.**
  8. **101:12.2.10 Exit signs complying with NFPA 101:7.10 shall define exits and access to exits where the exit is not immediately apparent.**
  9. **LRS 40:1730.45 and LAC 55:V:2601 The documentation provided for the subject facility does not appear to comply with The Commercial Building Energy Conservation Code.**

---

NOTE: THE FOLLOWING COMMENTS IDENTIFY ISSUES FOR INFORMATIONAL AND CAUTIONARY PURPOSES OR ISSUES THAT COULD NOT BE VERIFIED IN THE SUBMITTED DOCUMENTS.

10. **101:7.2.1.3.1 and 7.1.6.3 The floor elevation shall not change by more than 1/2" from one side of a door to the other.**
11. **LRS 40:1731-(Effective 8/15/95) Provide handicapped accessibility in accordance with ADA-AG (Accessibility Guidelines - September 1994). This does not include a review for compliance with the Federal Americans with Disabilities (Civil Rights) Act of 1990. Compliance with state regulations and requirements does not guarantee compliance with federal law.**
12. **LAC 55:V:305 Insulation and insulation assemblies shall meet the requirements of Section 718, International Building Code, 2000 Edition.**
13. **LRS 40:1711 Provide safety glazing in hazardous locations.**
14. **101:7.1.7.2.2 Steps in a change in elevation, where the elevation difference is 21" or less, shall have minimum 13" treads that are readily apparent.**
15. **101:7.2.1.5.9 Doors shall be openable with ONLY one releasing operation. A two-step release, such as a knob and an independent slide bolt, is NOT acceptable.**
16. **101:7.2.1.5 Locks on doors in means of egress shall not require the use of a key, special device or special knowledge to open in the direction of egress.**
17. **101:7.2.2.4.4.1 Handrails shall be no lower than 34" nor higher than 38" above the leading edge of the tread surface.**



01/10/2006

