

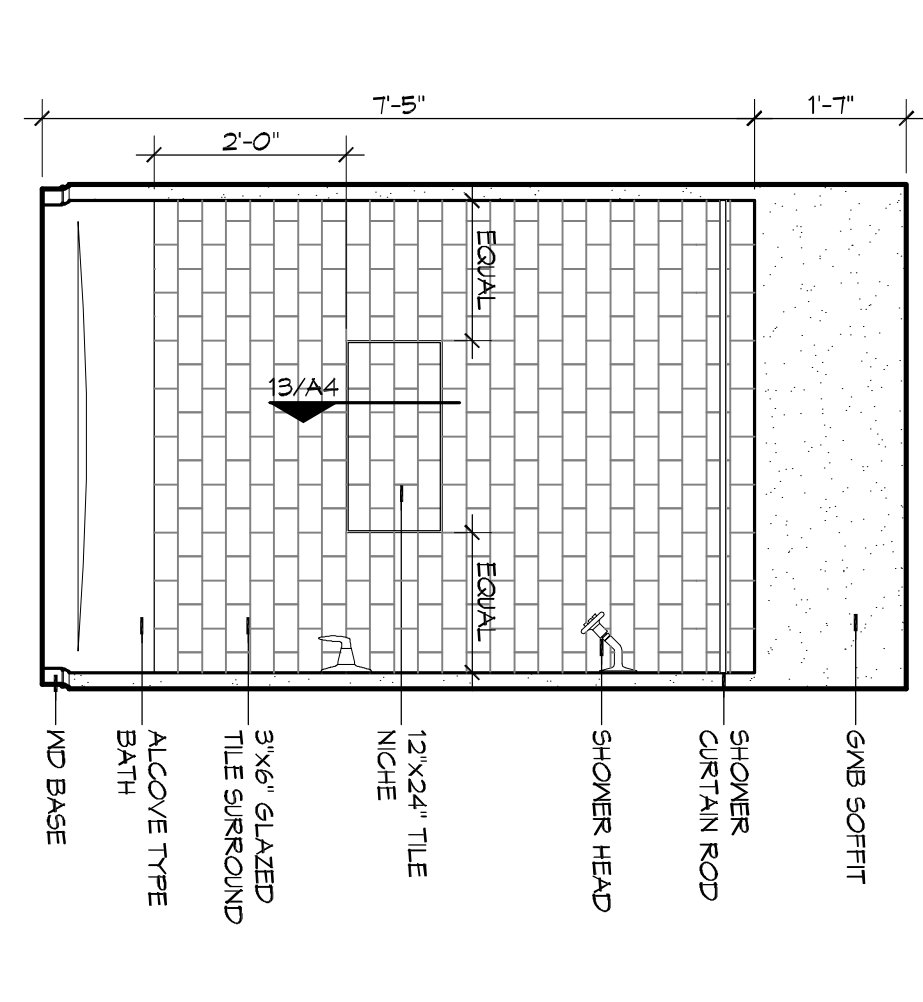
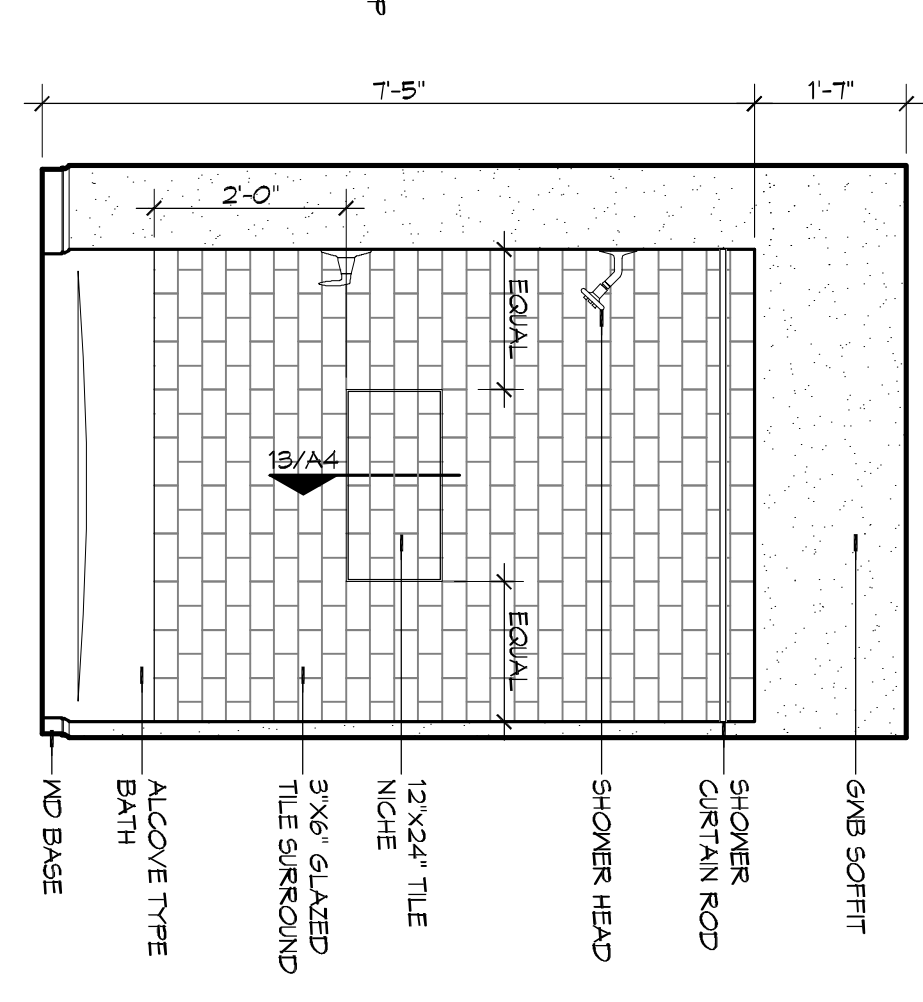
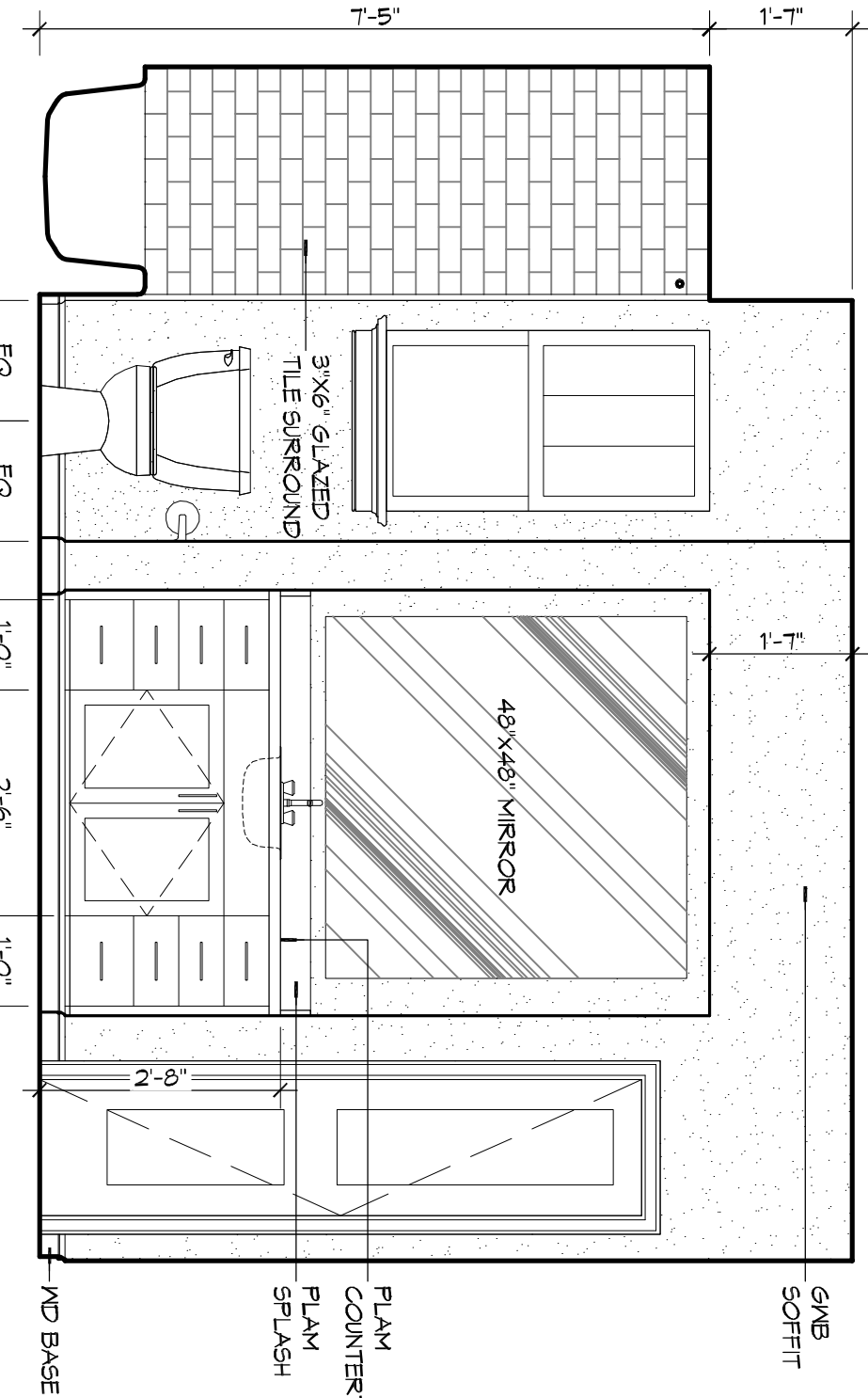
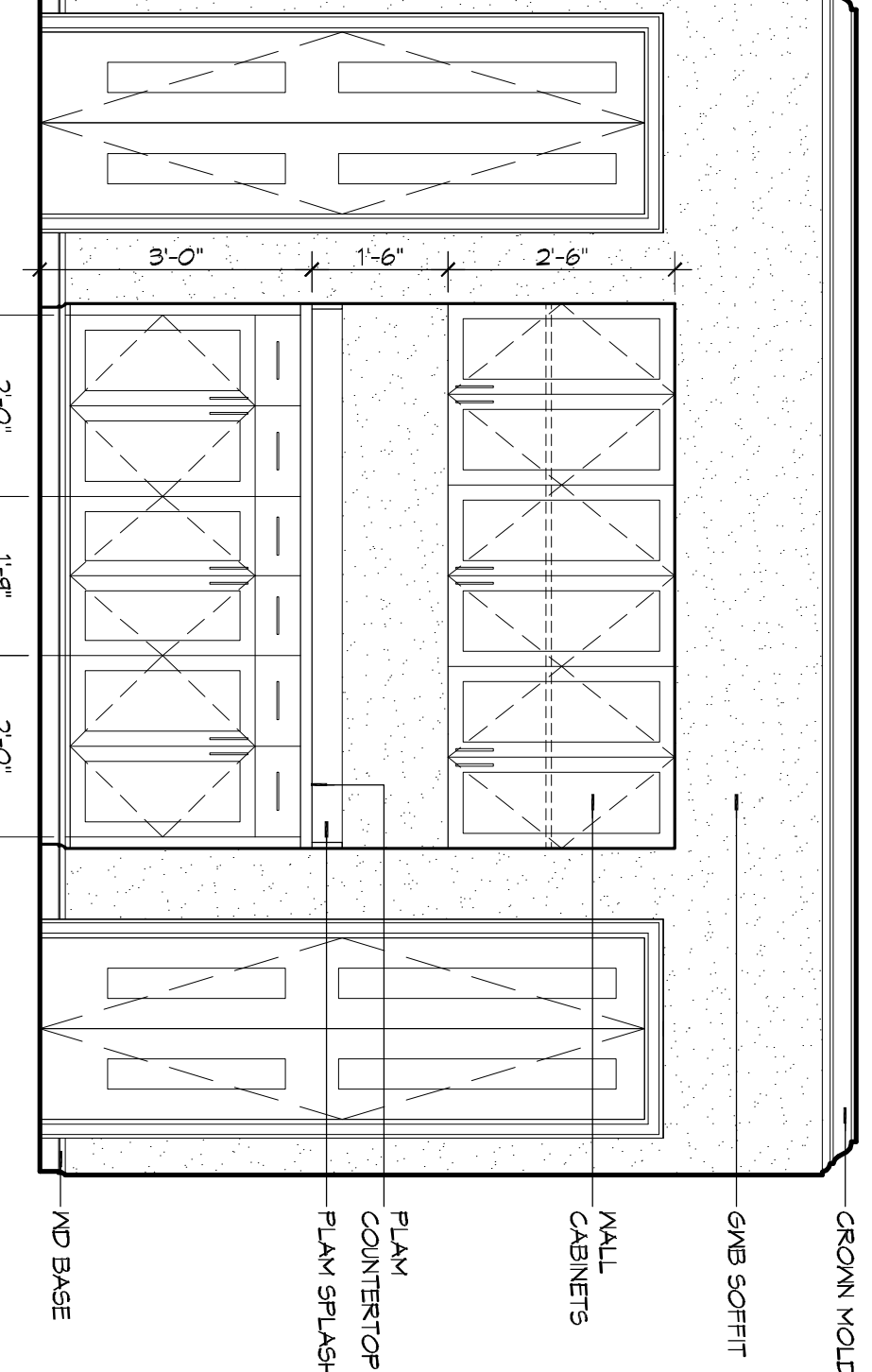
14 DETAIL  
SCALE: 6" = 1'-0"

13 DETAIL  
SCALE: 1 1/2" = 1'-0"

12 DETAIL  
SCALE: 1 1/2" = 1'-0"

10 INT ELEVATION  
SCALE: 1/2" = 1'-0"

10 INTERIOR ELEVATION  
SCALE: 1/2" = 1'-0"

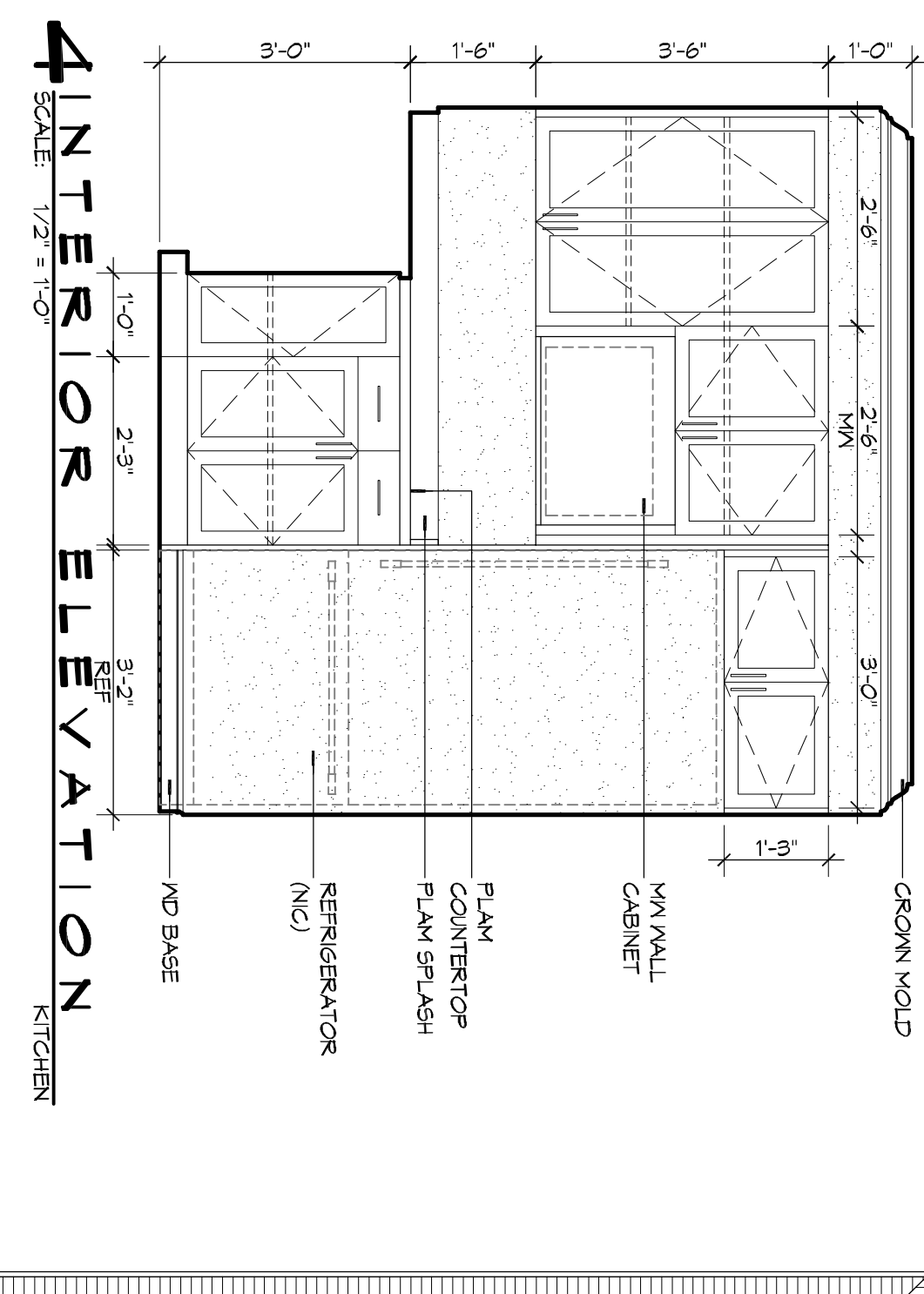
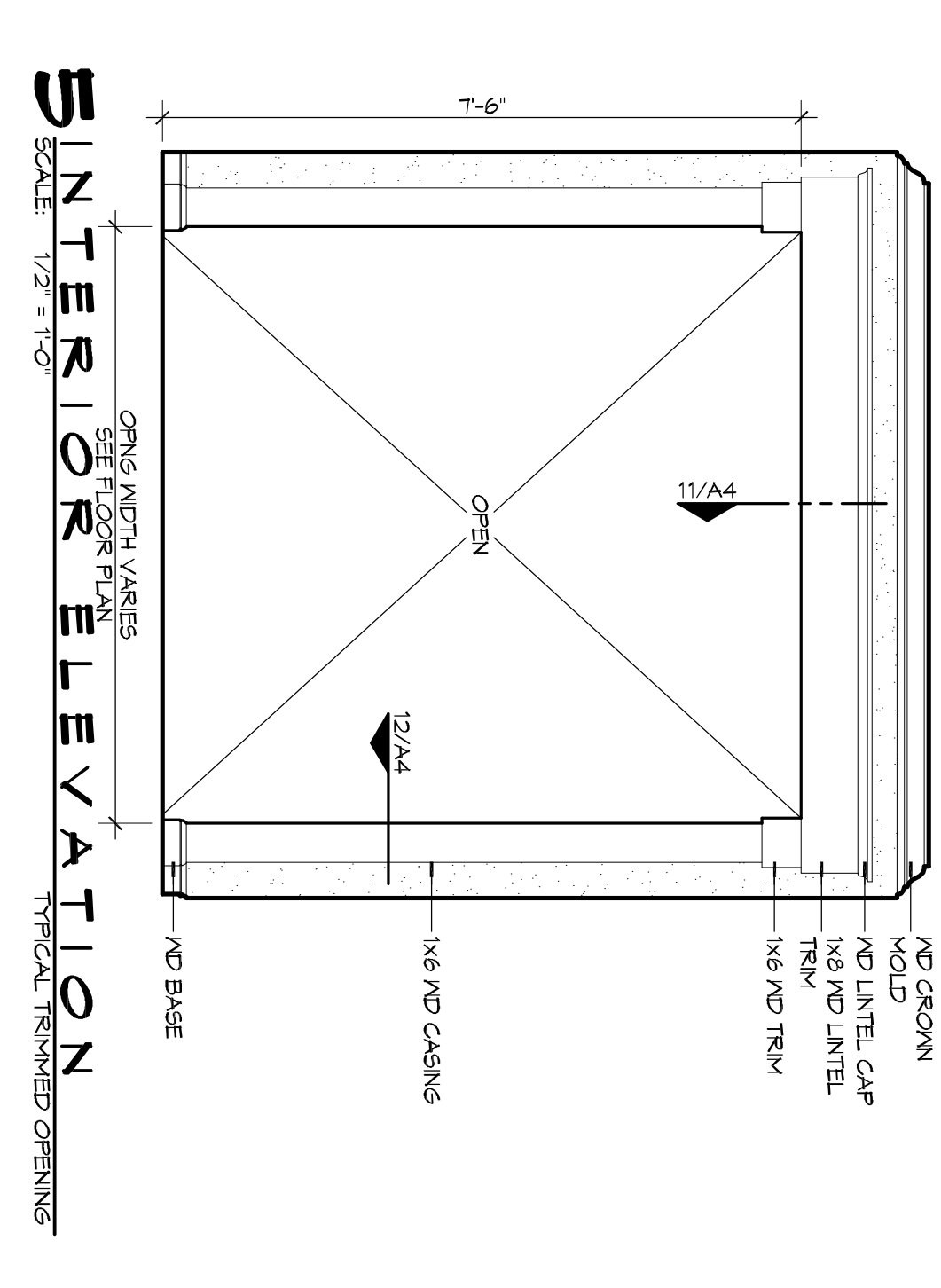


9 INTERIOR ELEVATION  
SCALE: 1/2" = 1'-0"

8 INTERIOR ELEVATION  
SCALE: 1/2" = 1'-0"

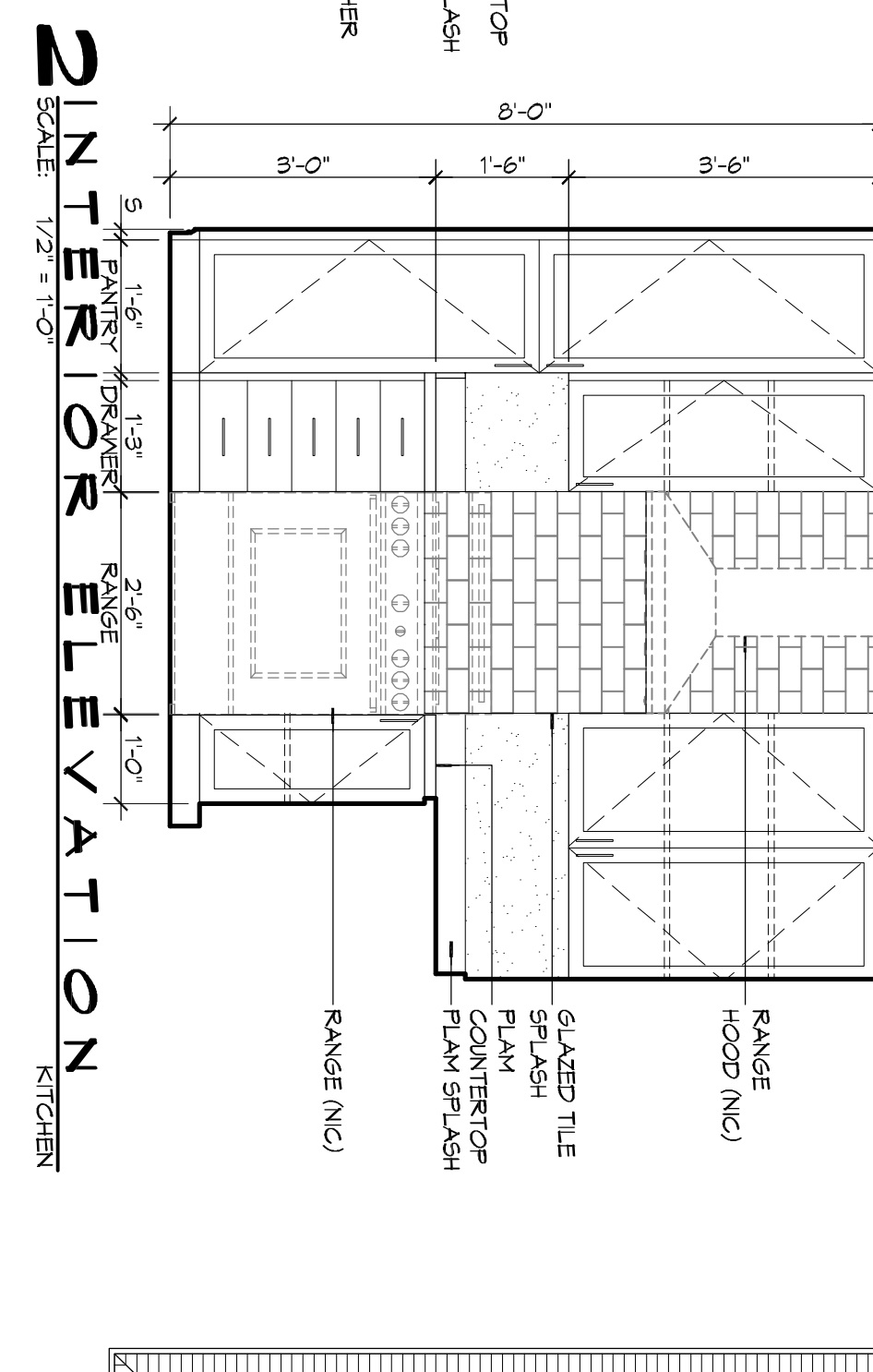
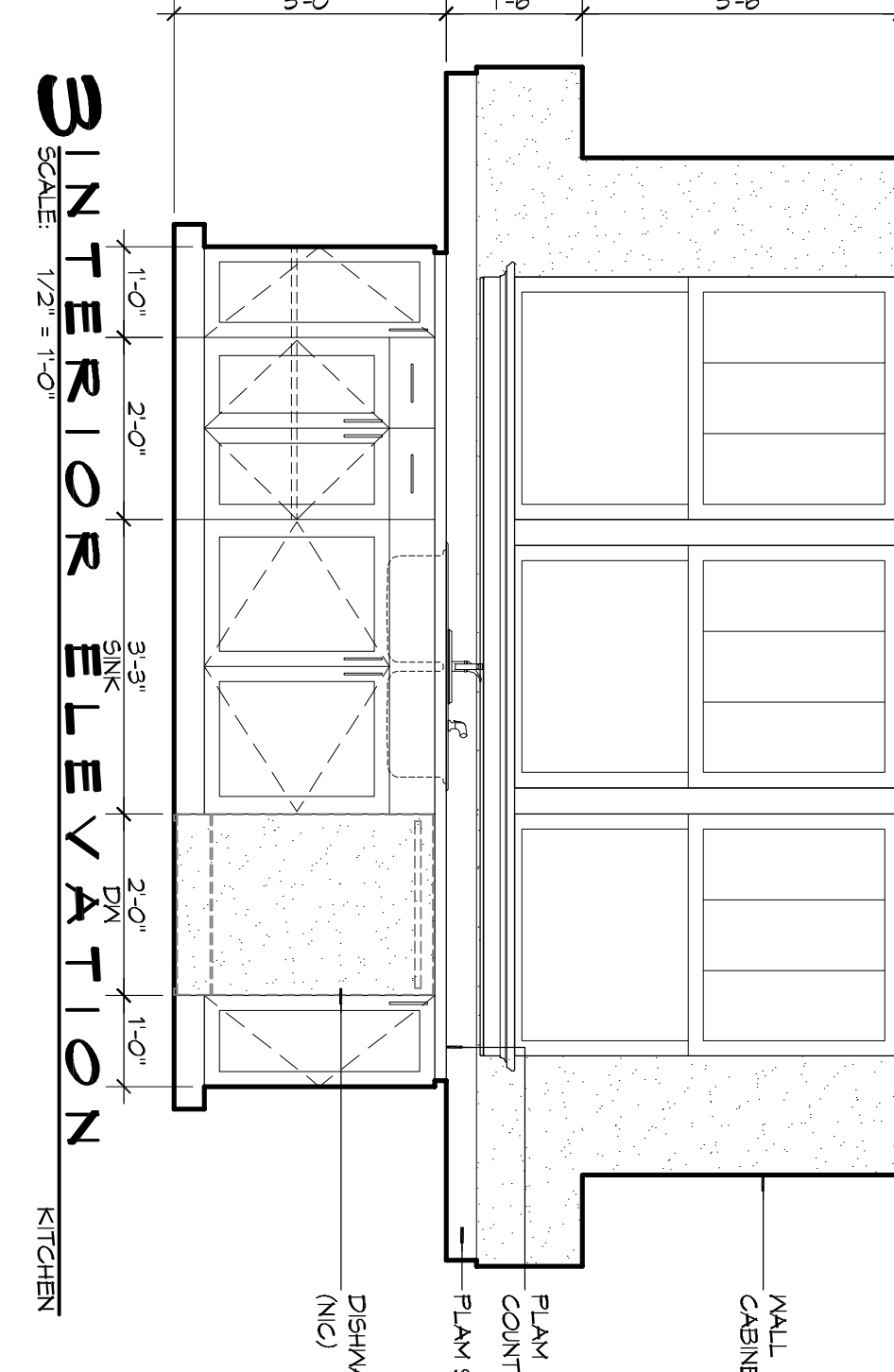
7 INT ELEVATION  
SCALE: 1/2" = 1'-0"

6 INT ELEVATION  
SCALE: 1/2" = 1'-0"



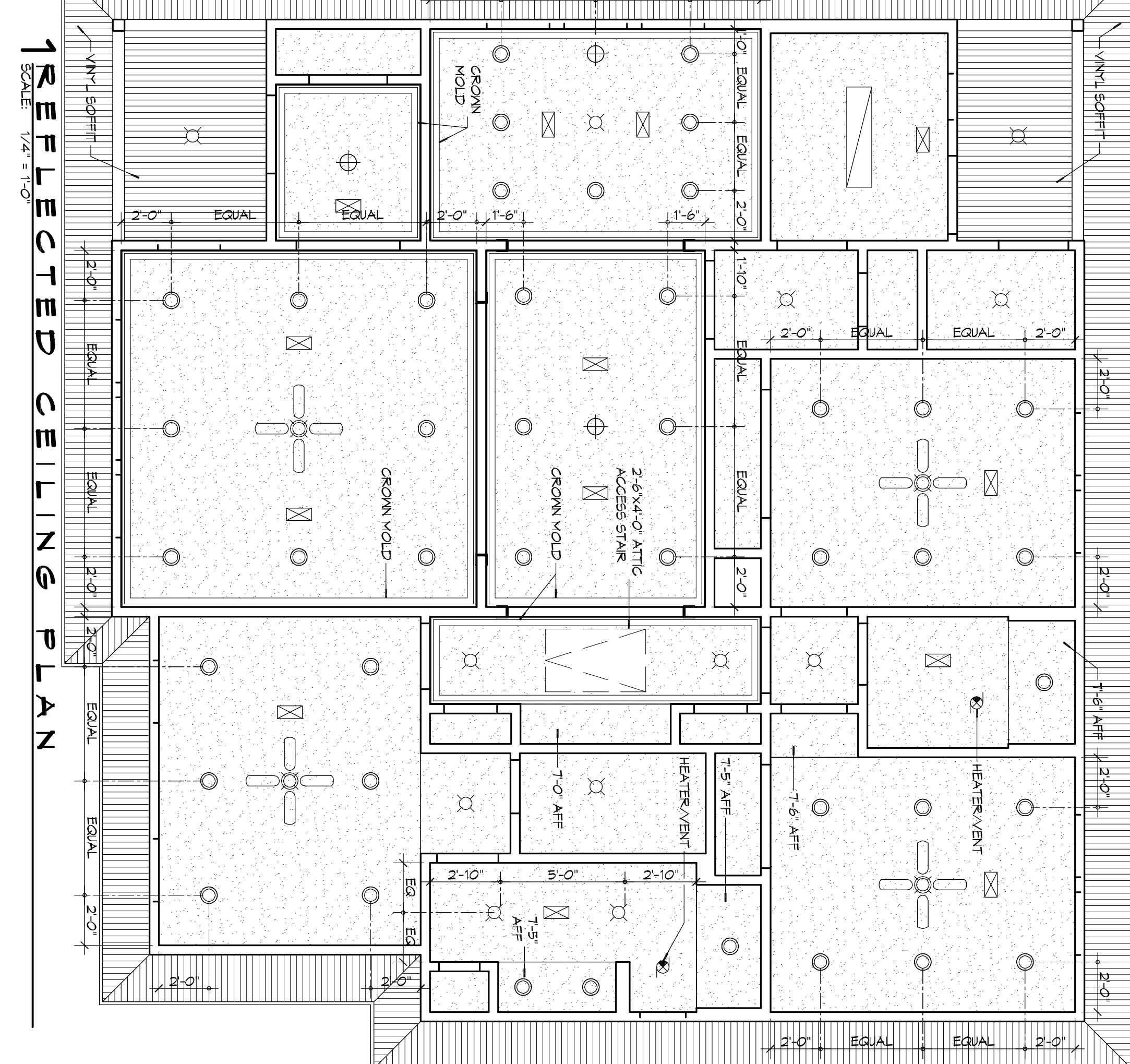
5 INTERIOR ELEVATION  
SCALE: 1/2" = 1'-0"

4 INTERIOR ELEVATION  
SCALE: 1/2" = 1'-0"



3 INTERIOR ELEVATION  
SCALE: 1/2" = 1'-0"

2 INTERIOR ELEVATION  
SCALE: 1/2" = 1'-0"



1 REFLECTED CEILING PLAN  
SCALE: 1/4" = 1'-0"

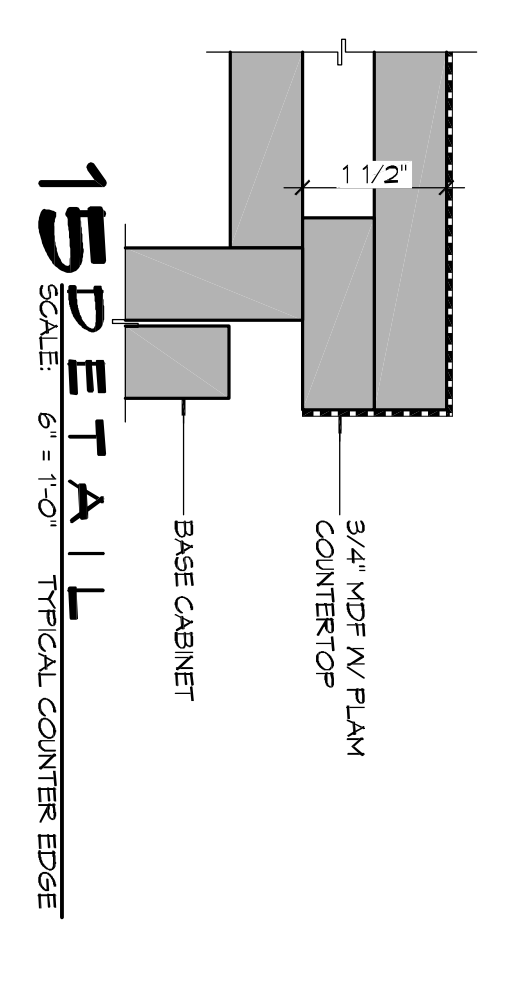
- GENERAL RCP NOTES**
1. CEILING HEIGHT TO BE 9'-0" AFF UNLESS NOTED OTHERWISE.
  2. CEILING VANTHAL SHALL BE PAINTED GMB UNLESS NOTED OTHERWISE. REFER TO FINISH SCHEDULE FOR MORE DETAILED INFORMATION RE GMB TYPE.
  3. CEILING SHALL HAVE COARSE ORANGE PEEL FINISH.
  4. REFER TO ELECTRICAL LIGHTING PLAN FOR LIGHT FIXTURE TYPE.
  5. WHERE GMB SOFFITS OCCUR ABOVE WALL TILES CONTRACTOR SHALL COORDINATE HEIGHT OF SOFFIT WITH ANY PLUMBING FIXTURE APPLIANCES, CABINETS DIVS WITH TILE MODULES.
- RCP LEGEND**
- SURFACE MTD LIGHT FIXTURE
  - RECESSED LIGHT FIXTURE
  - ⊗ EXHAUST FAN
  - ⊗ CEILING FAN WITH LIGHT FIXTURE
  - ▭ FLUORESCENT STRIP LIGHT FIXTURE

**GENERAL INTERIOR ELEVATION NOTES**

1. ITEMS SHOWN AS GREY AND DASHED ARE TO BE PROVIDED AND INSTALLED BY OWNER AND NOT IN CONTRACTOR (N/C).
2. CONTRACTOR SHALL COORDINATE ROUGH-IN AND ELEC 4 W/ ECH REQUIREMENTS WITH OWNER PER THEIR SPECIFICATIONS.
3. PROVIDE SOLID MD BLOCKING FOR ALL WALL MTD ACCESSORIES. USE MIN 2x4 MD STUDS WITH POSITIVE ATTACHMENT TO ADJACENT STUDS AND MOUNT FLUSH WITH FACE OF STUD.
4. PROVIDE 1/2" CERAMTICUS BACKER BOARD AT ALL WALL TILE LOCATIONS.

**GENERAL NOTES**

1. ALL WALL MOUNTED TILES SHALL BE ATTACHED TO 1/2" CERAMTICUS BACKER JNTS IN COMPLIANCE WITH ICA HANDBOOK FOR CERAMIC TILE INSTALLATION DETAIL M24C.
2. ALL TUB/SHOWER ALCOVES SHALL BE CONSTRUCTED IN COMPLIANCE WITH ICA HANDBOOK FOR CERAMIC TILE INSTALLATION DETAIL B411 OR B412.



**15 DETAIL**  
SCALE: 6" = 1'-0"

9/4" NDF NV PLAN  
COUNTERTOP  
BASE CABINET

**DAMMON ENGINEERING, INC.**  
Architects & Engineers

Chief Architect: Kevin J. Kinchen, NCARB  
Chief Engineer: Brian Wistich, PE  
554 Old Spanish Trail  
Slidell, LA 70458  
www.dammonengineering.com  
info@dammonengineering.com  
PH: 985.649.5832  
F: 985.641.5950

**CAMP VILLER NEW HOME CONSTRUCTION**  
CAMP VILLER, LOUISIANA

JOB No: 2210 DATE: AUGUST 22, 2014

DRAWN BY: K.K. CHECKED BY: J.K.

95% SUBMITTAL NOT FOR CONSTRUCTION

LOUISIANA ARCHITECTURAL GUARANTEE

STATE OF LOUISIANA REGISTERED ARCHITECT

REVISIONS

#	DESCRIPTION	DATE

SHEET No: **A4** 5 of 12