

DOOR SCHEDULE

MK	WIDTH	HEIGHT	THICK	TYPE	DOOR MATERIAL	FRAME MATERIAL	FRAME TYPE	HEAD	JAMB	SILL	FR	H/R	REMARKS
101A	3'-0"	T-0"	1 3/4"	G	ALUM/GLASS	ALUM	F2	13/A2	9/A2	11/A2	NR	01	
101B	3'-0"	T-0"	-	CO	-	METAL	F1	14/A2	16/A2	-	-	-	
101C	3'-0"	T-0"	1 3/4"	G	ALUM/GLASS	ALUM	F2	13/A2	11/A2	11/A2	NR	01	
102A	(2) 2'-0"	T-0"	1 3/4"	F	WOOD	METAL	F1	18/A2	15/A2	12/A2	NR	02	
104A	3'-0"	T-0"	1 3/4"	FF	WOOD	METAL	F1	18/A2	15/A2	12/A2	NR	03	
105A	3'-0"	T-0"	1 3/4"	G	ALUM/GLASS	ALUM	S4	11/A2	15/A2	9/A2	NR	01	
105B	3'-0"	T-0"	1 3/4"	G	ALUM/GLASS	ALUM	S2	13/A2	14/A2	11/A2	NR	01	
108A	3'-0"	T-0"	1 3/4"	F	WOOD	METAL	F1	18/A2	15/A2	12/A2	NR	02.1	
109A	3'-0"	T-0"	1 3/4"	F	WOOD	METAL	F1	18/A2	15/A2	11/A2	NR	05	
110A	3'-0"	T-0"	1 3/4"	F	WOOD	METAL	F1	18/A2	12/A2	10/A2	45 MIN	07	
111A	3'-0"	T-0"	1 3/4"	F	WOOD	METAL	F1	18/A2	15/A2	12/A2	NR	05	
112A	2'-4"	T-0"	1 3/4"	F	METAL	METAL	F1	10/A2	8/A2	11/A2	NR	06	
113A	3'-0"	T-0"	1 3/4"	F	WOOD	METAL	F1	18/A2	15/A2	12/A2	NR	01	
116A	3'-0"	T-0"	1 3/4"	F	WOOD	METAL	F1	18/A2	15/A2	12/A2	NR	04	
117A	3'-0"	T-0"	1 3/4"	F	WOOD	METAL	F1	18/A2	15/A2	12/A2	NR	04	
118A	3'-0"	T-0"	1 3/4"	F	WOOD	METAL	F1	18/A2	15/A2	12/A2	NR	04	
119A	3'-0"	T-0"	1 3/4"	F	WOOD	METAL	F1	18/A2	15/A2	12/A2	NR	04	
120A	3'-0"	T-0"	1 3/4"	F	WOOD	METAL	F1	18/A2	15/A2	12/A2	NR	04	
121A	3'-0"	T-0"	1 3/4"	F	WOOD	METAL	F1	18/A2	15/A2	12/A2	NR	04	
122A	3'-0"	T-0"	1 3/4"	F	WOOD	METAL	F1	18/A2	15/A2	12/A2	NR	04	
123A	3'-0"	T-0"	1 3/4"	F	WOOD	METAL	F1	18/A2	15/A2	12/A2	NR	04	

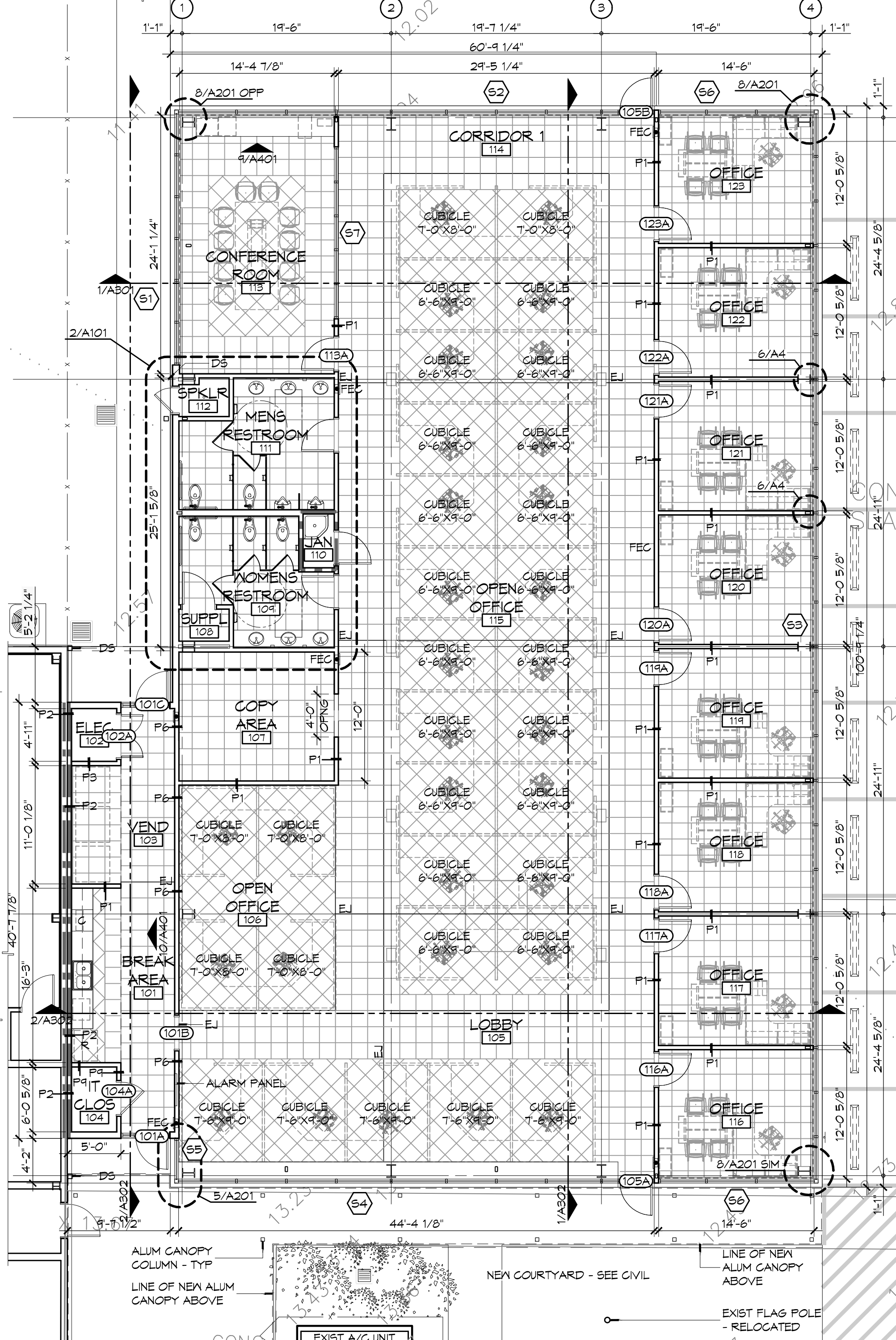
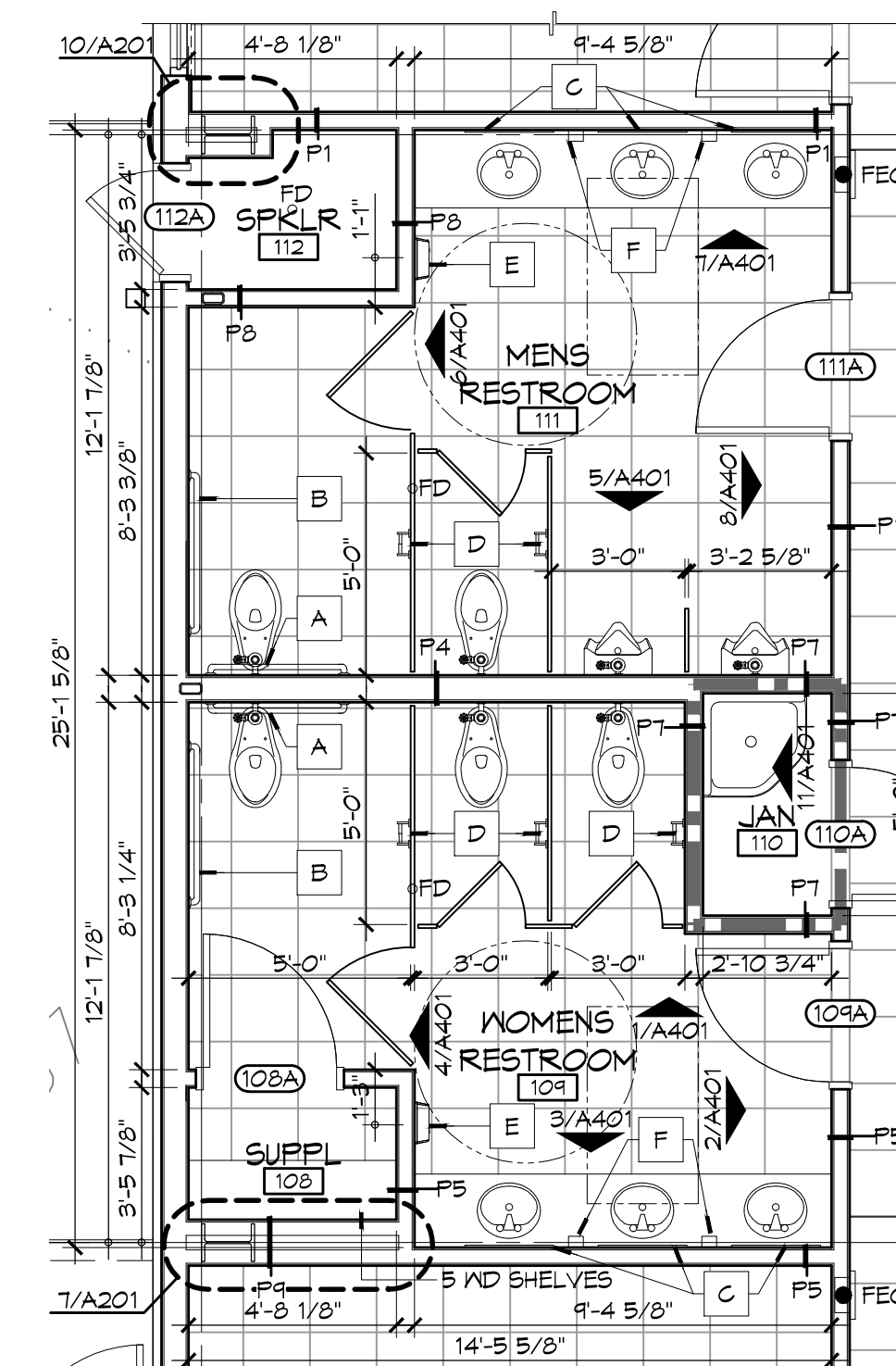
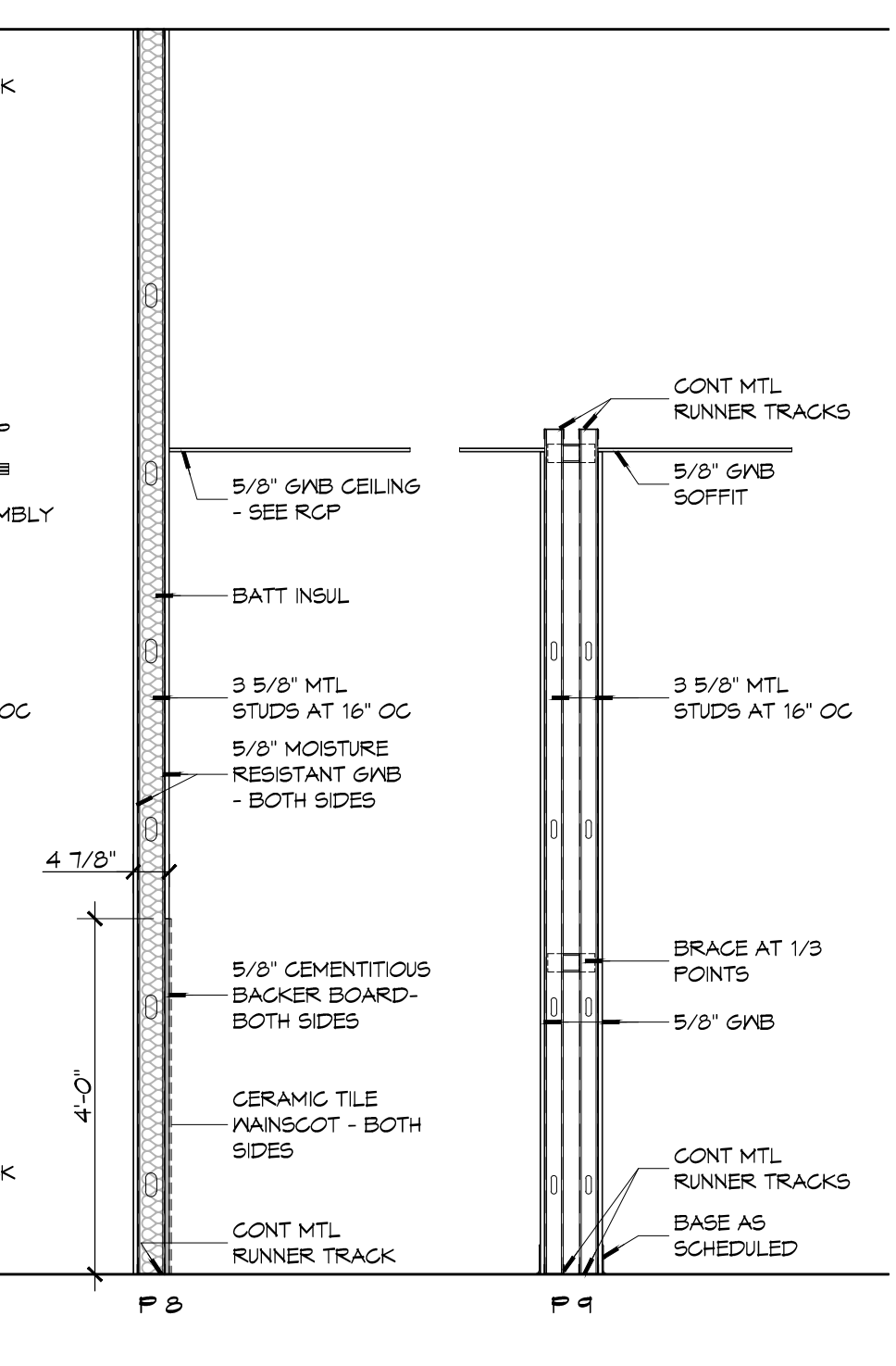
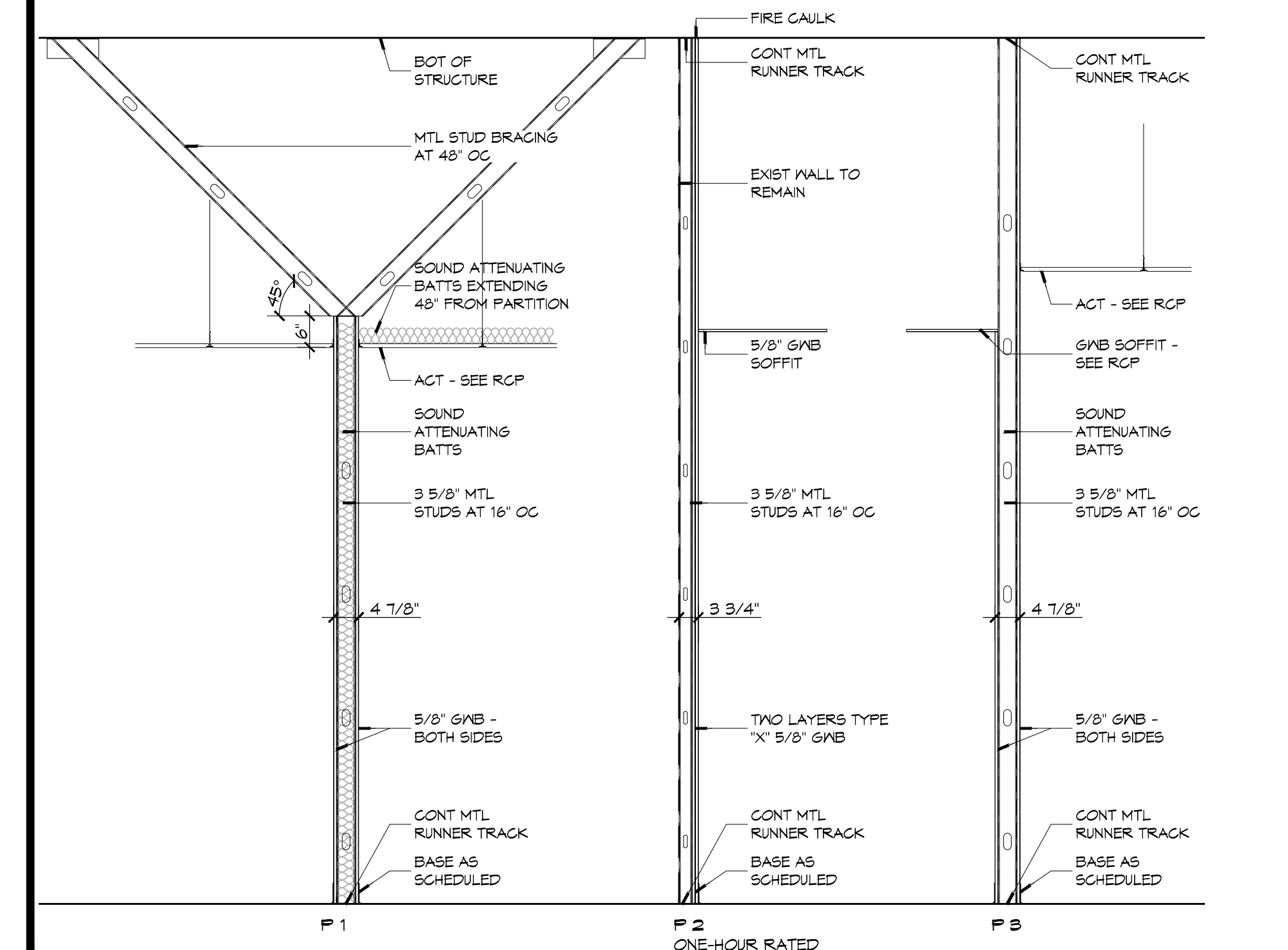
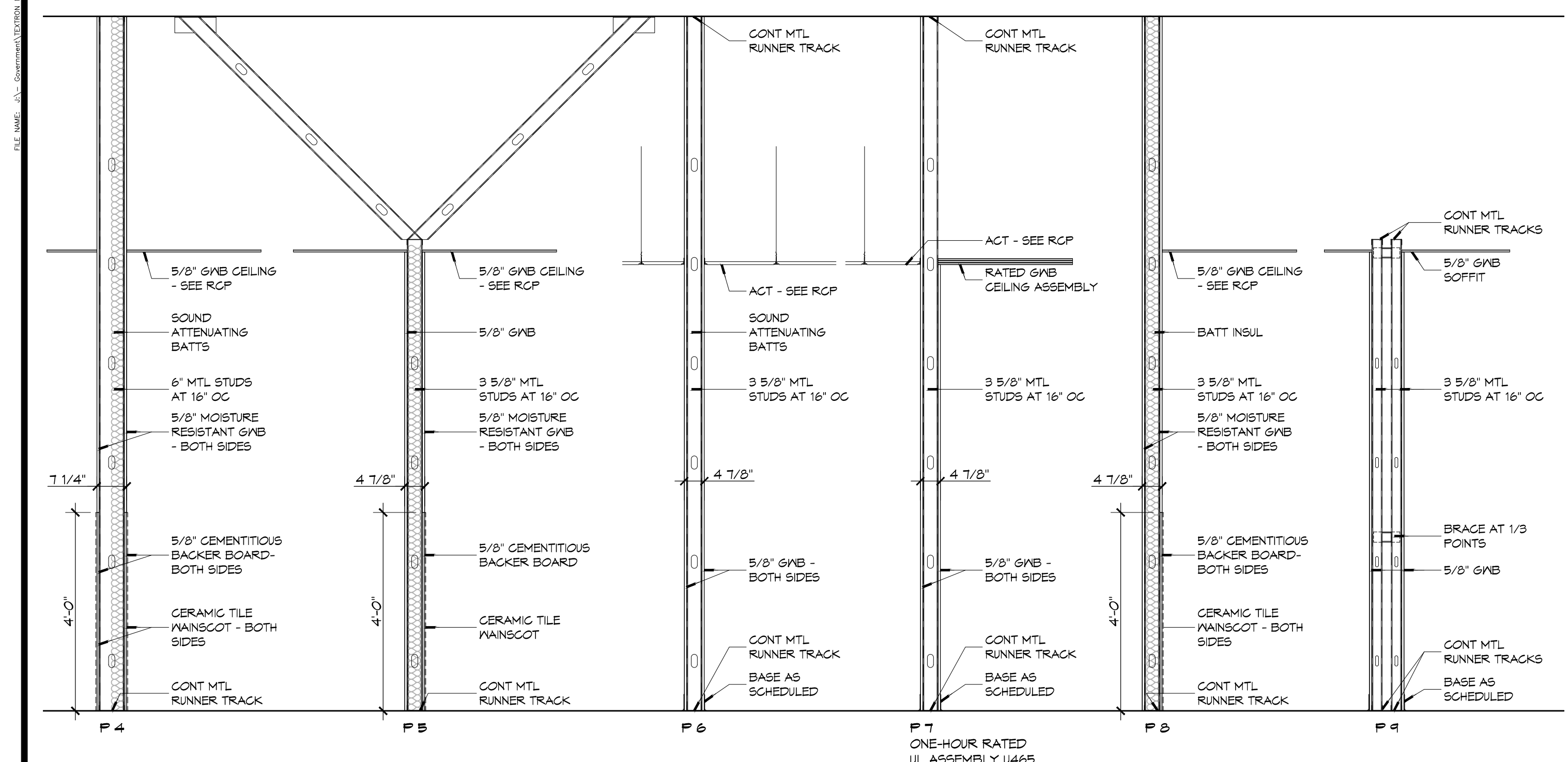
FINISH SCHEDULE

RM #	ROOM NAME	FLOOR	BASE	WALLS	CEILING	CLNG HT	REMARKS
101	BREAK AREA	CERAMIC TILE	4" COVE RUBBER	PAINTED GNB	SUSPENDED ACT	8'-0" & 9'-0"	
102	ELECTRIC	SEALED CONCRETE	4" COVE RUBBER	PAINTED GNB	PAINTED GNB	9'-0"	
103	VENDING	CERAMIC TILE	4" COVE RUBBER	PAINTED GNB	SUSPENDED ACT	8'-0" & 9'-0"	
104	IT CLOSET	SEALED CONCRETE	4" COVE RUBBER	PAINTED GNB	PAINTED GNB	9'-0"	
105	LOBBY	CERAMIC TILE	4" COVE RUBBER	PAINTED GNB	SUSPENDED ACT	9'-0"	
106	OPEN OFFICE	CERAMIC TILE	4" COVE RUBBER	PAINTED GNB	SUSPENDED ACT	9'-0"	
107	COPY AREA	CERAMIC TILE	4" COVE RUBBER	PAINTED GNB	SUSPENDED ACT	9'-0"	
108	SUPPLY	CERAMIC TILE	4" COVE RUBBER	PAINTED GNB	PAINTED GNB	9'-0"	
109	WOMENS RESTROOM	CERAMIC TILE	CERAMIC TILE	PAINTED MR GNB	PAINTED MR GNB	9'-0"	
110	JANITOR	SEALED CONCRETE	NONE	PAINTED MR GNB	PAINTED MR GNB	9'-0"	
111	MENS RESTROOM	CERAMIC TILE	CERAMIC TILE	PAINTED MR GNB	PAINTED MR GNB	9'-0"	
112	SPRINKLER	CONCRETE	NONE	MR GNB	NONE	N/A	
113	CONFERENCE ROOM	CERAMIC TILE	4" COVE RUBBER	PAINTED GNB	SUSPENDED ACT	9'-0"	
114	CORRIDOR 1	CERAMIC TILE	4" COVE RUBBER	PAINTED GNB	SUSPENDED ACT	9'-0"	
115	OPEN OFFICE	CERAMIC TILE	4" COVE RUBBER	PAINTED GNB	SUSPENDED ACT	10'-0"	
116	OFFICE	CERAMIC TILE	4" COVE RUBBER	PAINTED GNB	SUSPENDED ACT	9'-0"	
117	OFFICE	CERAMIC TILE	4" COVE RUBBER	PAINTED GNB	SUSPENDED ACT	9'-0"	
118	OFFICE	CERAMIC TILE	4" COVE RUBBER	PAINTED GNB	SUSPENDED ACT	9'-0"	
119	OFFICE	CERAMIC TILE	4" COVE RUBBER	PAINTED GNB	SUSPENDED ACT	9'-0"	
120	OFFICE	CERAMIC TILE	4" COVE RUBBER	PAINTED GNB	SUSPENDED ACT	9'-0"	
121	OFFICE	CERAMIC TILE	4" COVE RUBBER	PAINTED GNB	SUSPENDED ACT	9'-0"	
122	OFFICE	CERAMIC TILE	4" COVE RUBBER	PAINTED GNB	SUSPENDED ACT	9'-0"	
123	OFFICE	CERAMIC TILE	4" COVE RUBBER	PAINTED GNB	SUSPENDED ACT	9'-0"	

LEGEND

- ONE-HOUR FIRE RATED WALL ASSEMBLY
- GENERAL FLOOR PLAN NOTES**
- DIMENSIONS ARE FINISH SURFACE TO FINISH SURFACE UNLESS OTHERWISE NOTED.
 - REFER TO PARTITION TYPES FOR PARTITION THICKNESS WHERE NOT SHOWN ON PLAN. REFER TO SHEET 6003 FOR TYPICAL MOUNTING HEIGHTS AND REQUIRED ADAAG FLOOR CLEARANCES.
 - SEE SHEET LS101 FOR FIRE-RATED PARTITION LOCATIONS AND DESIGNATED FIRE RATING.
 - ITEMS INDICATED AS GRAYED AND DASHED ARE BY OWNER AND SHOWN FOR COORDINATION PURPOSES ONLY.
 - REFER TO SHEET A102 FOR SPECIFIED ACOUSTICAL CEILING TILE AND GRID SYSTEM.
 - NOT USED
 - NOT USED
 - WHERE RATED PARTITIONS ARE INDICATED, REFER TO THE REFERENCED ASSEMBLY DIRECTORY FOR THE COMPLETE EXTENT OF THE ASSEMBLY CITED.
 - SEE SHEET LS101 FOR LOCATIONS OF RATED PARTITIONS.
 - CONTRACTOR SHALL REPORT TO THE ARCHITECT ANY CONFLICTS BETWEEN THE INDICATED FIRE RATING OF THE PARTITION AND THAT INDICATED ON THE LIFE-SAFETY AND BUILDING CODE INFORMATION SHEET. DO NOT PROCEED WITH CONSTRUCTION OF PARTITION UNTIL CONFLICT HAS BEEN RESOLVED TO THE SATISFACTION OF THE ARCHITECT.
 - UL DESIGN NUMBERS REFER TO THE UNDERWRITERS LABORATORIES FIRE RESISTANCE DIRECTORY - LATEST ADDITION.
 - NON-RATED PARTITIONS SHALL HAVE SEALANTS AT THE HEAD, SILL, THROUGH PENETRATIONS, OPENINGS, AND JUNCTURES WITH DISSIMILAR MATERIALS.
 - ALL FIRE RATED ASSEMBLIES SHALL HAVE FIRESTOPS AT THE HEAD, SILL, THROUGH PENETRATIONS, OPENINGS, AND JUNCTURES WITH DISSIMILAR MATERIALS.
 - UL AND GA (GYPSUM ASSOCIATION) TEST NUMBERS MAY VARY ON THE MANUFACTURER OR COMPONENTS ACTUALLY USED.
 - ANY WORK THAT PENETRATES DENIGED WALLS OR EXTERIOR WALLS MUST BE DONE SUCH THAT THE INTEGRITY OF THE FIRE RATING IS MAINTAINED.
 - PARTITION TYPE P2 SHALL BE IN COMPLIANCE WITH IBC 2012 SECTION 706. REPLACE EXIST CAULK W/ FIRE STOPPING AND FIRE CAULK IN EXIST 6" CONG WALL WHERE WALL TWO-HOUR FIRE WALL IS INDICATED.

DAMMON ENGINEERING, INC.
 Architects & Engineers
 Chief Architect: Kevin J. Kinchen, NCARB
 Civil Engineer: Brian W. Austin, PE
 554 Old Spanish Trail
 Slidell, LA 70458
 Phone: 985.641.5932
 Fax: 985.641.5990
 www.dammonengineering.com
 info@dammonengineering.com



DOOR HARDWARE SCHEDULE

- SET 01**
 DOORS: 101A, 101C, 105A, 105B
 EACH TO HAVE:
 1 CYLINDER AS REQUIRED 626
 BALANCE OF HARDWARE BY DOOR MFG
- SET 02**
 DOORS: 102A
 EACH TO HAVE:
 3 HINGES BB1214 1526D
 1 STOREROOM LOCK CL-780-D-LRC 626
 1 OVERHEAD STOP 4505 630
 3 DOOR SILENCERS 608 GRV
- SET 02.1**
 DOORS: 108A
 EACH TO HAVE:
 3 HINGES BB1214 1526D
 1 STOREROOM LOCK CL-780-D-LRC 626
 1 MALL STOP MS40TCCV 630
 3 DOOR SILENCERS 608 GRV
- SET 03**
 DOORS: 104A
 EACH TO HAVE:
 6 HINGES BB1214 626
 2 FLUSH BOLTS 555 626
 1 DUST PROOF STRIKE 510 626
 1 STOREROOM LOCK CL-780-D-LR-C 626
 2 OVERHEAD STOPS 4505 630
 1 ASTRAGAL 600A 626
 2 DOOR SILENCERS 608 GRV
- SET 04**
 DOORS: 116A, 117A, 118A, 119A, 120A, 121A, 122A, 123A
 EACH TO HAVE:
 3 HINGES BB1214 626
 1 OFFICE LOCK CL-750-D-LR-C 626
 1 MALL STOP MS40TCCV 630
 3 DOOR SILENCERS 608 GRV
- SET 05**
 DOOR: 109A, 111A
 EACH TO HAVE:
 3 HINGES BB1191 630
 1 DOOR CLOSER SC80 684
 1 PUSH PLATE 70C 630
 1 PULL PLATE 110 X 70C 630
 1 KICK PLATE K1050 8" X 2" LDW 620
 1 OVERHEAD STOP 4505 @ DR. 111A 630
 1 MALL STOP MS40TCCV @ DR. 109A 630
 3 DOOR SILENCERS 608 GRV
- SET 06**
 DOORS: 112A
 EACH TO HAVE:
 3 HINGES BB1191 NRP 630
 1 STOREROOM LOCK CL-780-D-LR-C 626
 1 DOOR CLOSER SC80 X DS 684
 1 THRESHOLD 8465 626
 1 GASKETING 2525B BRN
- SET 07**
 DOORS: 110A
 EACH TO HAVE:
 3 HINGES BB1214 626
 1 STOREROOM LOCK CL-780-D-LR-C 626
 1 DOOR CLOSER SC80 X DS 684
 1 GASKETING 2525B BRN
 3 DOOR SILENCERS 608 GRV

DATE	REVISIONS

SEAL:

NEW OFFICE BUILDING ADDITION:
TEXTRON
 Marine & Land Systems
 252 STONE ROAD
 SLIDELL, LOUISIANA
 JOB NO: 2209 DATE: AUGUST 5, 2015 CHECKED BY: KJK
 DRAWN BY: KJK