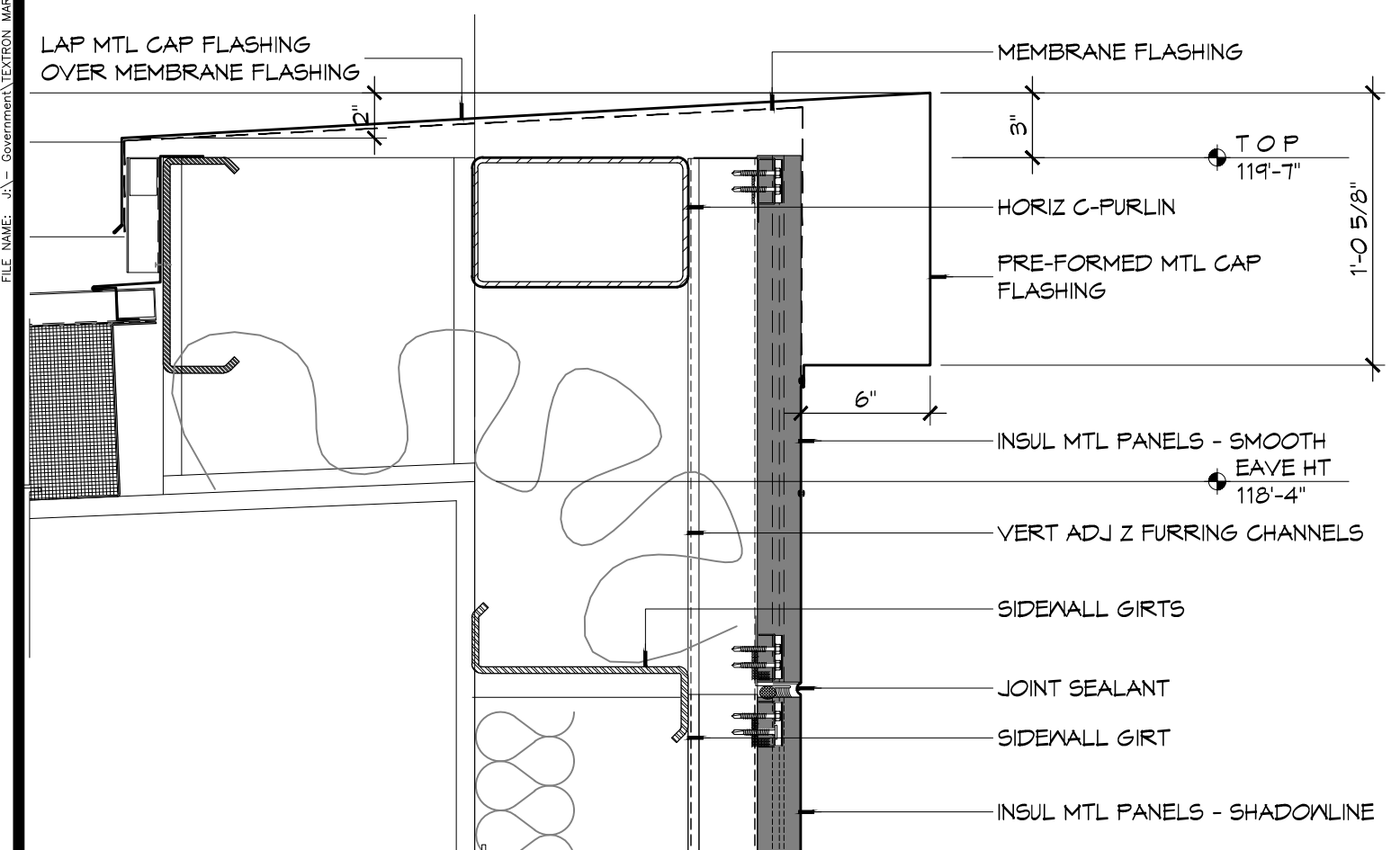
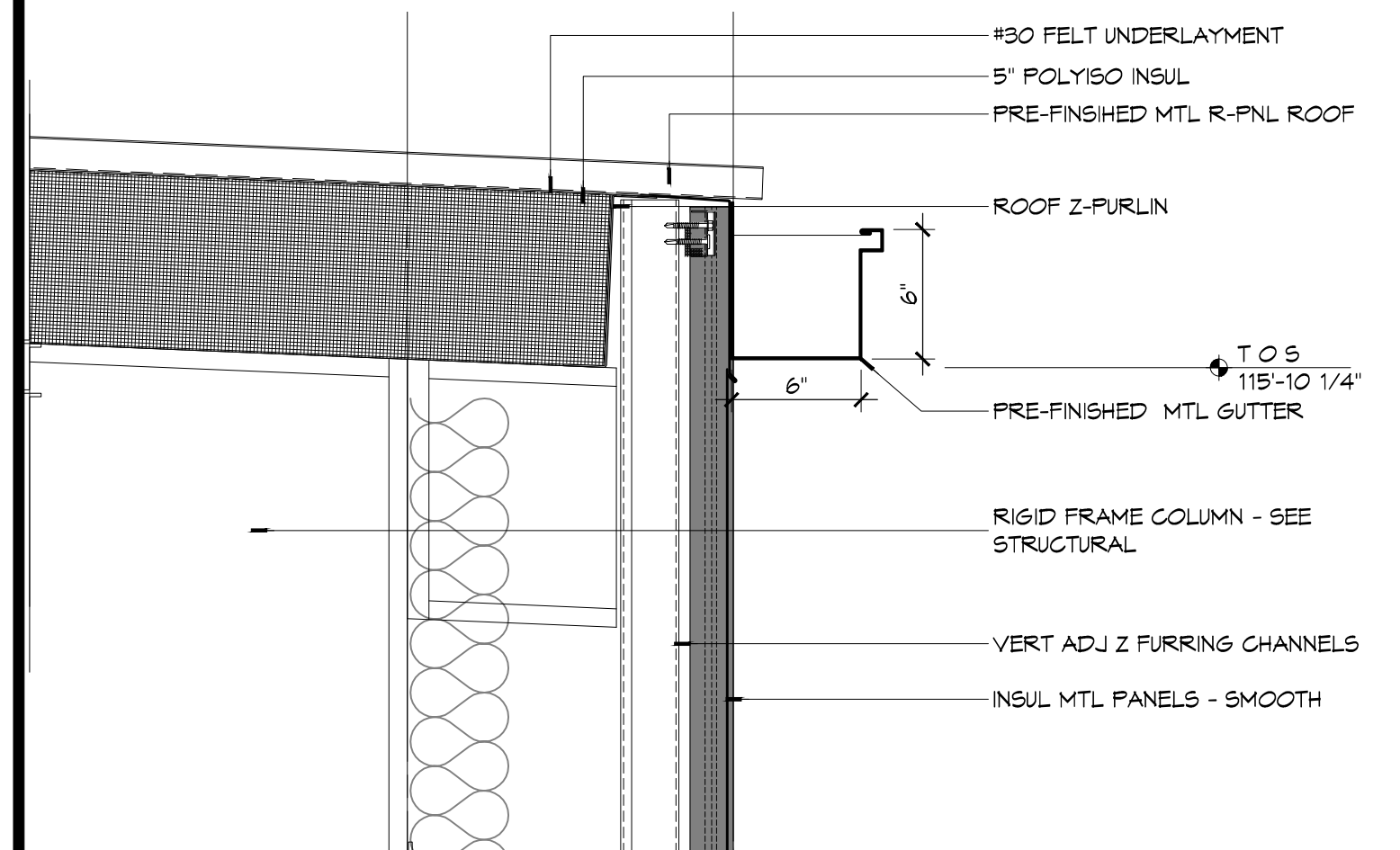


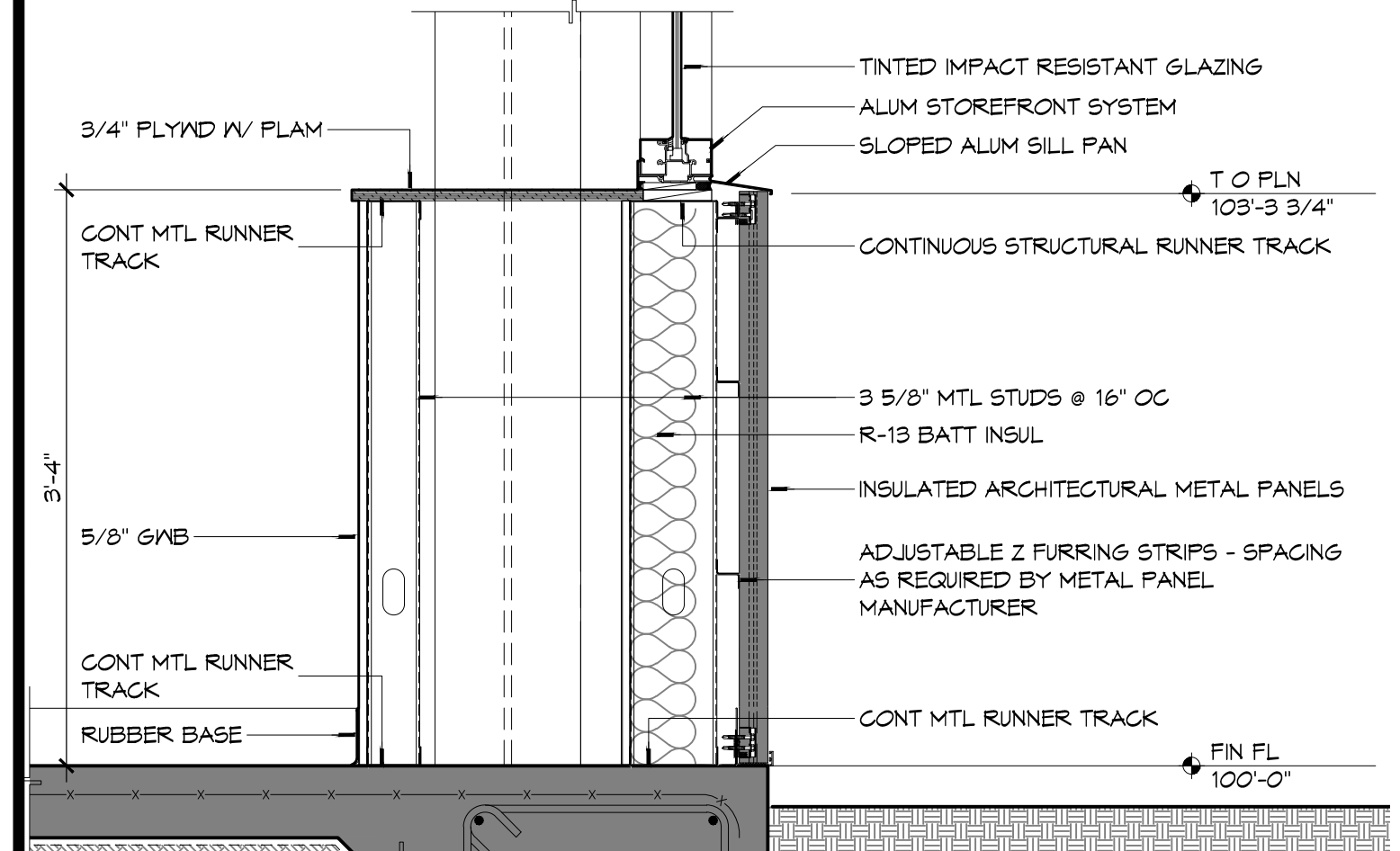
8 SECTION DETAIL
SCALE: 1 1/2" = 1'-0"



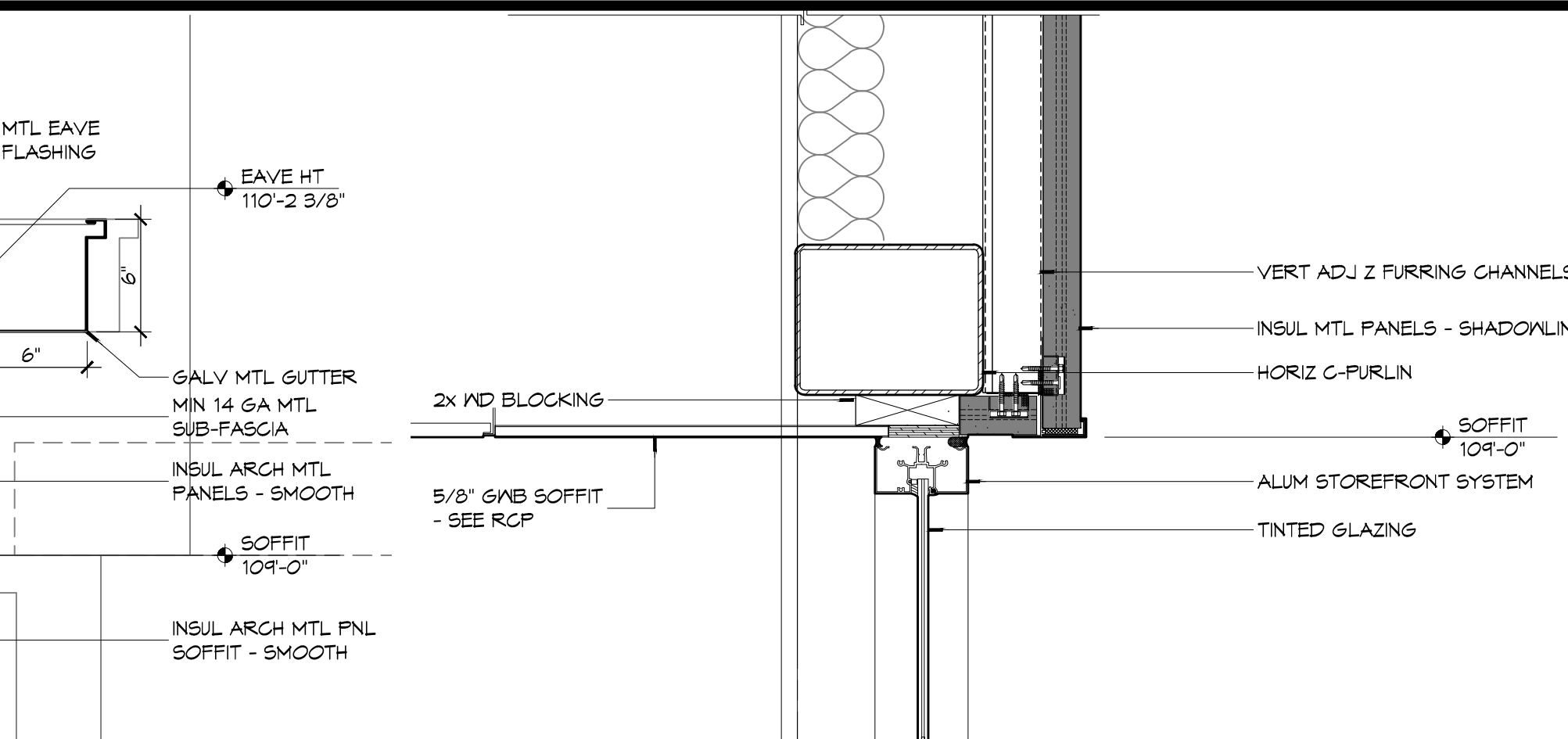
5 SECTION DETAIL
SCALE: 1 1/2" = 1'-0"



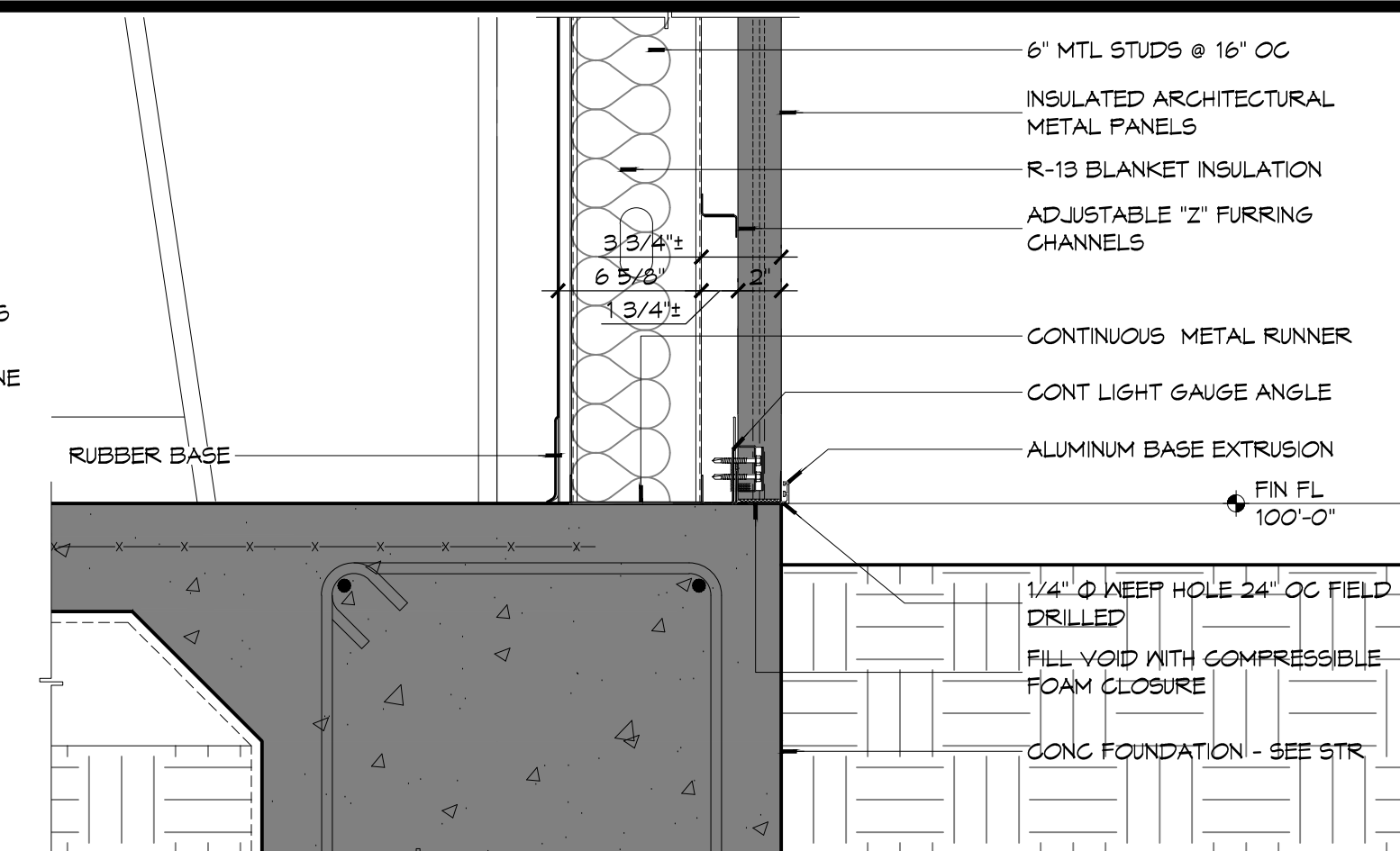
3 SECTION DETAIL
SCALE: 1 1/2" = 1'-0"



2 SECTION DETAIL
SCALE: 1" = 1'-0"



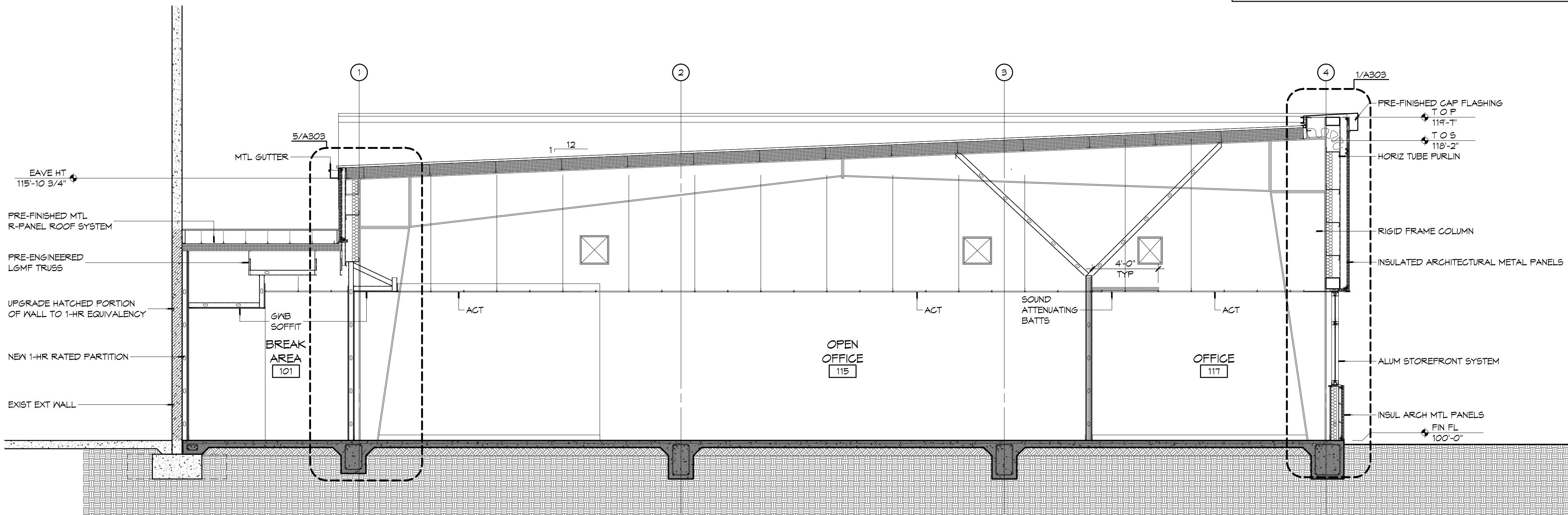
7 SECTION DETAIL
SCALE: 1 1/2" = 1'-0"



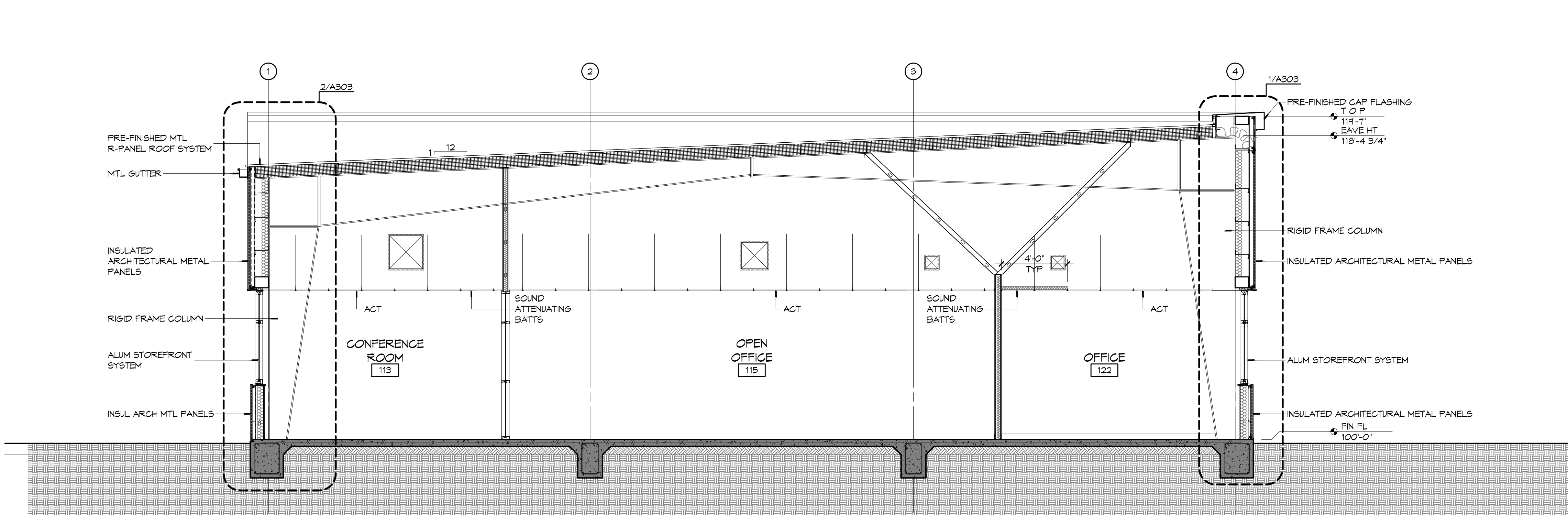
8 SECTION DETAIL
SCALE: 1 1/2" = 1'-0"

GENERAL BUILDING SECTION NOTES

- FOR ROOF FLASHING DETAILS, SEE SHEET A103.



4 BUILDING SECTION
SCALE: 1/4" = 1'-0"



1 BUILDING SECTION
SCALE: 1/4" = 1'-0"

DAMMON ENGINEERING, INC.
Architects & Engineers
www.dammonengineering.com
info@dammon.com
504 Old Spanish Trail
Slidell, LA 70458
F: 985.641.5950

#	DESCRIPTION	DATE

SEAL:
8/5/2015

NEW OFFICE BUILDING ADDITION:
TEXTRON
Marine & Land Systems
257 STONE ROAD
SLIDELL, LOUISIANA
JOB No: 2209 DATE: AUGUST 5, 2015
DRAWN BY: KJK CHECKED BY: KJK

SHEET TITLE:
BUILDING SECTIONS,
SECTION DETAILS
DRAWING NUMBER:
A301
SHEET No: 16 of 26