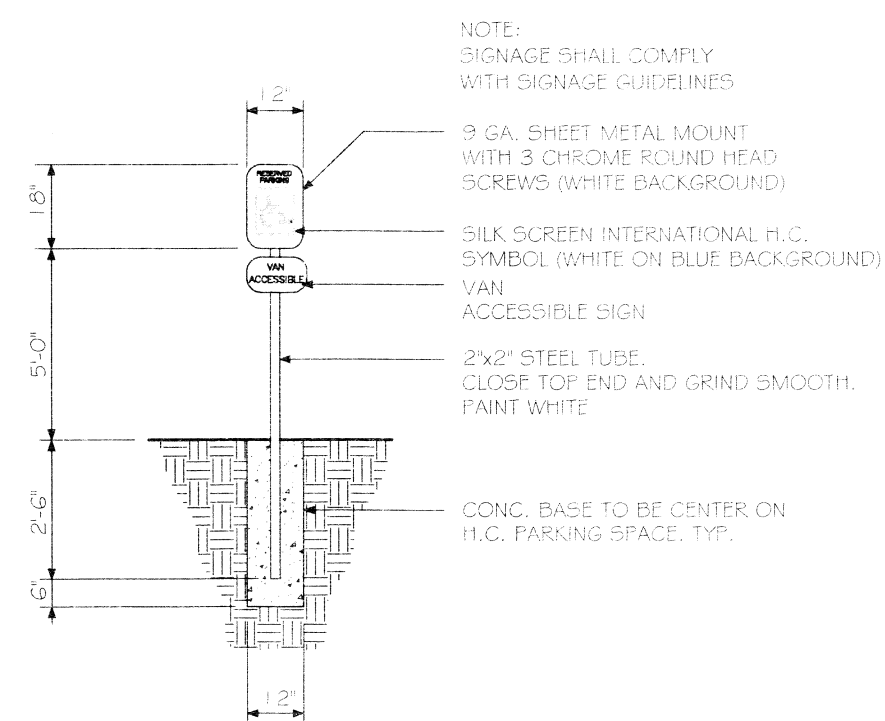


ENLARGED SITE PLAN
SCALE: 1/4" = 1'-0"

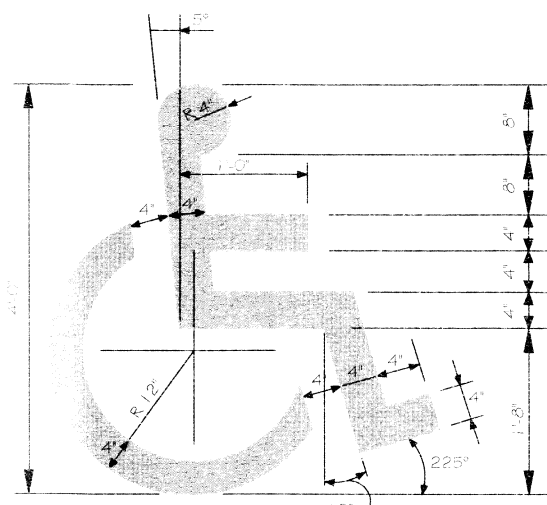
PARKING REQUIREMENTS
 MERCANTILE - 1 PER THREE HUNDRED SQUARE FT. = 27
 TOTAL PARKING REQUIRED = 27 SPACES INCLUDING
 2 HANDICAP ACCESSIBLE, TOTAL PROVIDED = 45

NOTE:
 ALL CONCRETE PAVEMENT SHALL BE
 5" THICK CONCRETE EXCEPT FROM
 PROPERTY LINE TO STREET SHALL BE 6"
 THICK CONCRETE.

SITE PLAN NOTES
 1. ROOFING MATERIAL: METAL ROOFING PANEL
 2. SIDING MATERIAL: STUCCO + ALUM STOREFRONT
 3. UTILITIES: ALL UTILITIES SHALL BE PLACED UNDERGROUND



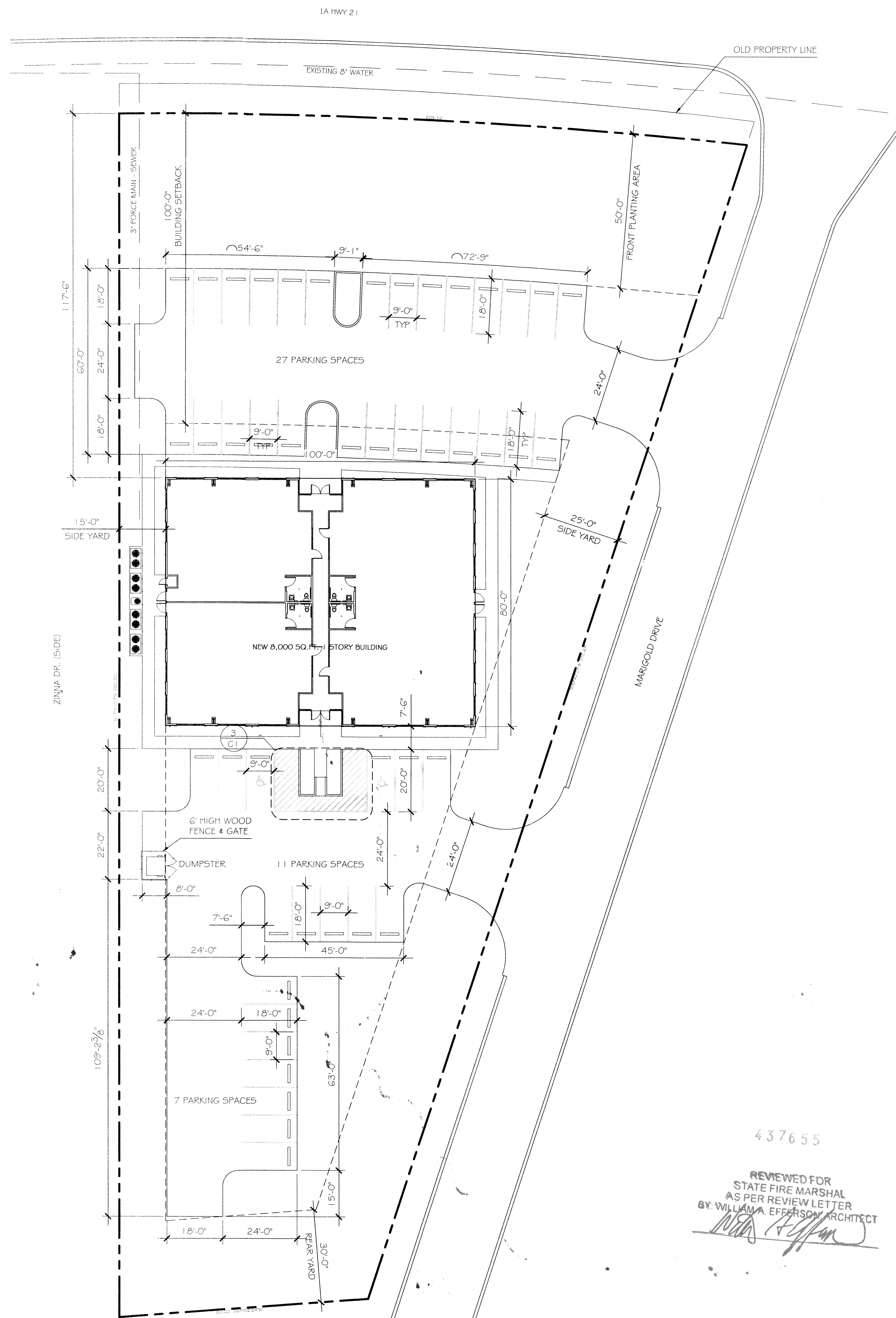
HANDICAP PARKING SIGN
N.T.S.



HANDICAP SYMBOL DETAIL
N.T.S.

SITE LIGHTING
 EXTERIOR LIGHTING SHALL BE SHADDED OR INWARDLY DIRECTED IN SUCH A MANNER SO
 THAT NO DIRECT LIGHTING OR GLARE BE CAST BEYOND THE PROPERTY LINE. THE
 INTENSITY OF SUCH LIGHTING SHALL NOT EXCEED ONE FOOT CANDLE AS MEASURED AT
 THE ADJUTING PROPERTY LINE. (N/A FOR THIS PARTICULAR JOB)

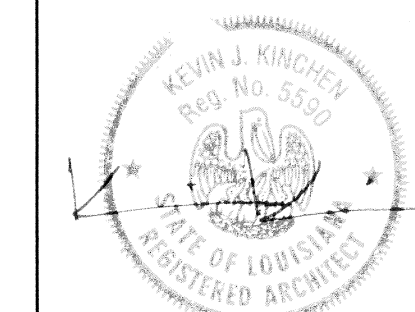
2 SITE DETAILS
SCALE: N.T.S.



SITE PLAN
SCALE: 1" = 200'

NEW COMMERCIAL BUILDING
DR. FARZAD ADULI
 LOT 285 MARIGOLD DRIVE
 COVINGTON, LA

REVISIONS	DATE
# DESCRIPTION	



8/16/13

SITE PLAN
&
DETAILS

SHEET No: 4 of 11

CI

DAMMON
 ENGINEERING, INC.
 Architects & Engineers

dammonengineering.com
 dammoneng@earthlink.net
 PHONE: 985 649-5832
 FAX: 985 641-5950

CHIEF ENGINEER: EMMETT DAMMON, P.E.
 CHIEF ARCHITECT: KEVIN KINCHEN, NCARB
 554 OLD SPANISH TRAIL
 SUITE 100, COVINGTON, LA 70455

DATE: 08-16-2013
 JOB No: 2178
 DRAWN BY: KJK
 CHECKED BY: KJK

437655
 REVIEWED FOR
 STATE FIRE MARSHAL
 AS PER REVIEW LETTER
 BY WILLIAM A. EFFERSON ARCHITECT