

## PLUMBING FIXTURE SCHEDULE

**WC-1 (HANDICAPPED WATER CLOSET):**  
LOW CONSUMPTION TANK TYPE PRESSURE ASSISTED WATER CLOSET. HANDICAPPED WITH MINIMUM 17-1/2" HIGH ELONGATED 1.5 GPF.

**WC-2 (NON-HANDICAPPED WATER CLOSET):**  
SAME AS WC-1 WITH STANDARD 15-1/2" HEIGHT.

**UR-1 (HANDICAPPED URINAL):**  
FLUSH VALVE URINAL WITH EXTENDED SHIELDS AND FLUSHING RIM. MOUNT LIP MINIMUM 17" ABOVE FINISH FLOOR.

**UR-2 (NON-HANDICAPPED URINAL):**  
SAME AS UR-1 WITH STANDARD WALL MOUNTED HEIGHT.

**L-1 (LAVATORY):**  
RIM TYPE ADA COUNTER MOUNTED LAVATORY WITH WING HANDLES. PROVIDE WITH PIE AND DRAIN INSULATION.

**FD-1 (FLOOR DRAIN):**  
2" DIAMETER FLOOR DRAIN WITH 1/2" TRAP PRIMER.

**WH-1 (WATER HEATER):**  
60 GALLON ELECTRIC WATER HEATER WITH TWO 4,500 WATT NON-SIMULTANEOUS ELECTRIC ELEMENTS, INSULATED AND JACKETED GLASS LINED STEEL.

**MB-1 (MOP BASIN):**  
2' X 2' FIBERGLASS BASIN WITH SUPPORTED LEGS. PROVIDE WITH HOT AND COLD WATER WITH GOOSE NECK FAUCET.

**HB-1 (HOSE BIBB):**  
FREEZE PROOF EXTERIOR HOSE BIBB WITH BACK FLOW PREVENTER.

**S-1:**  
STAINLESS STEEL SELF RIMMED SINK

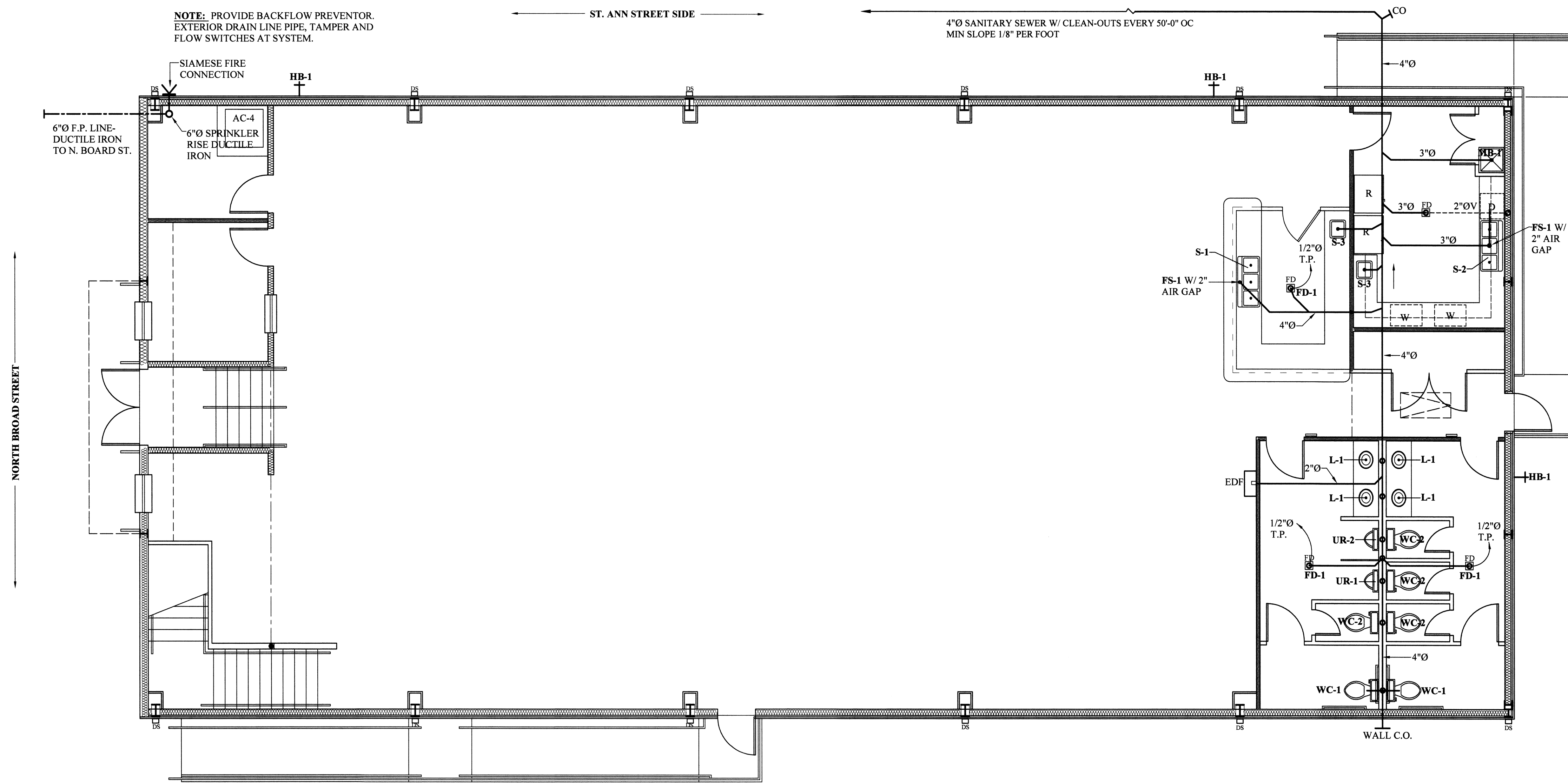
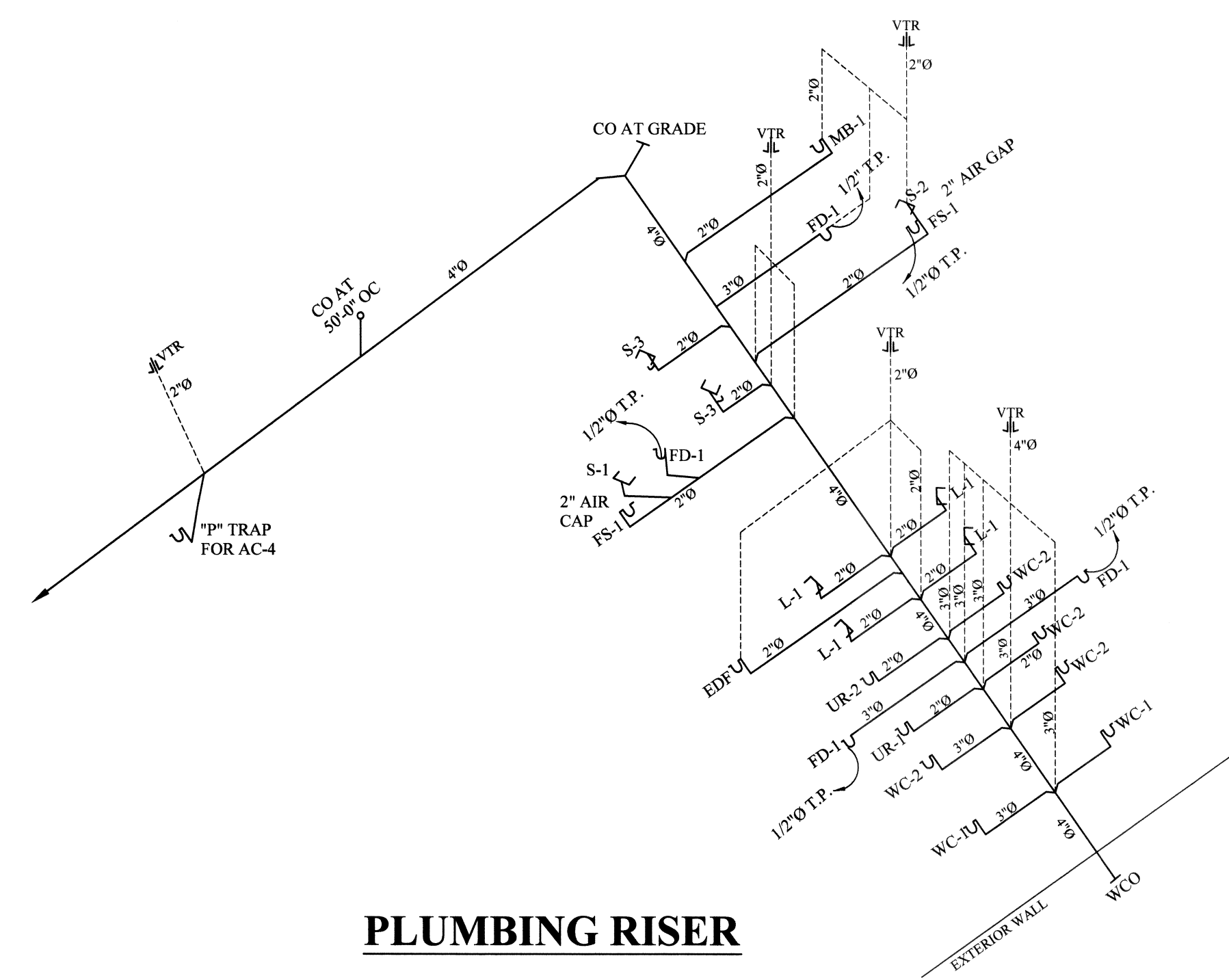
**S-2:**  
20 GA. 43" X 22" STAINLESS STEEL SINK. PROVIDE WITH 8" SPREAD GOOSE (SWIVEL) NECK. PROVIDE WITH SPRAY NOZZLE AND STRAINER.

**S-3:**  
STAINLESS STEEL 20" X 17" X 9 1/2" DEEP HAND SINK. PROVIDE WITH 4" CENTER SINGLE LEVEL AND STRAINER.

**FS-1:**  
FLOOR SINK W/ 1/2 GRATE EQUAL TO JOSAN NO. 49303-3. PROVIDE WITH DEEP SEAT TRAP. PROVIDE WITH 1/2" NON-MECHANICAL TRAP PRIMER FROM SINK.

### MISCELLANEOUS PLUMBING ITEMS

- A. VB - 1, VACUUM BREAKER: INSTALL VACUUMS BREAKER ON COLD WATER INLET TO WATER HEATER UNIT SHALL BE EQUAL TO WATTS 36 A.
- B. WHA, WATER HAMMER ARRESTORS: STAINLESS STEEL, BELLOWS / COMPRESSION CHAMBER TYPE, PRE - CHARGED AND PERMANENTLY SEALED AT THE FACTORY. EQUAL TO SMITH'S HYDROTOL # 5005.
- C. INTERIOR FINISHED FLOOR CLEANOUT: SERIES 58660 BY JOSAM OR EQUAL. LACQUERED CAST IRON, TWO PIECE BODY WITH DOUBLE DRAINAGE FLANGE, WEEP HOLES, REVERSIBLE CLAMPING COLLAR AND ADJUSTABLE NICKEL, BRONZE STRAINER, ROUND WITH SCORIATED COVER IN SERVICE AREA AND ROUND WITH DEPRESSED COVER TO ACCEPT FLOOR FINISH IN FINISHED FLOOR AREAS.
- D. CLEANOUTS AND TEST TEES: FLOOR CLEANOUTS SHALL BE JOSAM SERIES 58340, ZURN Z1425 - 3 OR APPROVED EQUAL. WALL CLEANOUTS SHALL BE JOSAM SERIES 58710, ZURN Z1440 - 1 OR APPROVED EQUAL. EXTERIOR CLEANOUTS SHALL BE JOSAM SERIES 58310, ZURN Z1420 - 27 OR APPROVED EQUAL, SET IN 15" X 15" X 6" CONCRETE PAD.
- E. VALVE BOXES: EACH GATE VALVE SHALL BE PROVIDED WITH AN ADJUSTABLE, TWO PIECE, CAST IRON VALVE BOX OF A SIZE SUITABLE FOR THE VALVE. THE HEAD SHALL BE ROUND AND THE LID SHALL HAVE THE WORD "WATER" CAST ON IT. THE LEAST DIAMETER OF THE SHAFT OF THE BOX SHALL BE 5". EACH BOX SHALL BE GIVEN A HEAVY COAT OF BITUMINOUS PAINT AND SET IN AN 18" X 18" X 6" CONCRETE PAD.
- F. BP - 1, BACKFLOW PREVENTER: REDUCED PRESSURE EQUAL TO WATTS WITH AIR GAP AND STRAINER. PIPE DRAIN TO FLOOR DRAIN. EQUAL PRODUCTS BY FEBCO, HERSEY, ZURN.
- G. SHOCK ABSORBERS: SHOCK ABSORBERS SHALL BE INSTALLED ON ALL HOT AND COLD WATER SUPPLIES NEAR THE FAUCET. SHOCK ABSORBERS SHALL BE EQUAL TO PRECISION PLUMBING PRODUCTS, INC. WITH SIZES AS RECOMMENDED BY THE MANUFACTURER.



## FLOOR PLAN- PLUMBING PLAN

SCALE: 3/16" = 1'-0"

REVISIONS	BY
1	11/13/2013 JFS

**ADDITION TO ZULU SOCIAL AID  
AND PLEASURE CLUB  
732 NORTH BOARD STREET  
NEW ORLEANS, LA 70119**

**JOSEPH F. SCHNEIDER JR., AIA**  
ARCHITECT  
105 EVANGELINE DRIVE, SLIDELL, LOUISIANA 70460  
(985) 847-0714  
jfsarchitect@charter.net

DRAWN H. SCHNEIDER
CHECKED
DATE 11/02/2013
SCALE AS NOTED
JOB NO.
SHEET <b>P-1</b>
OF SHEETS