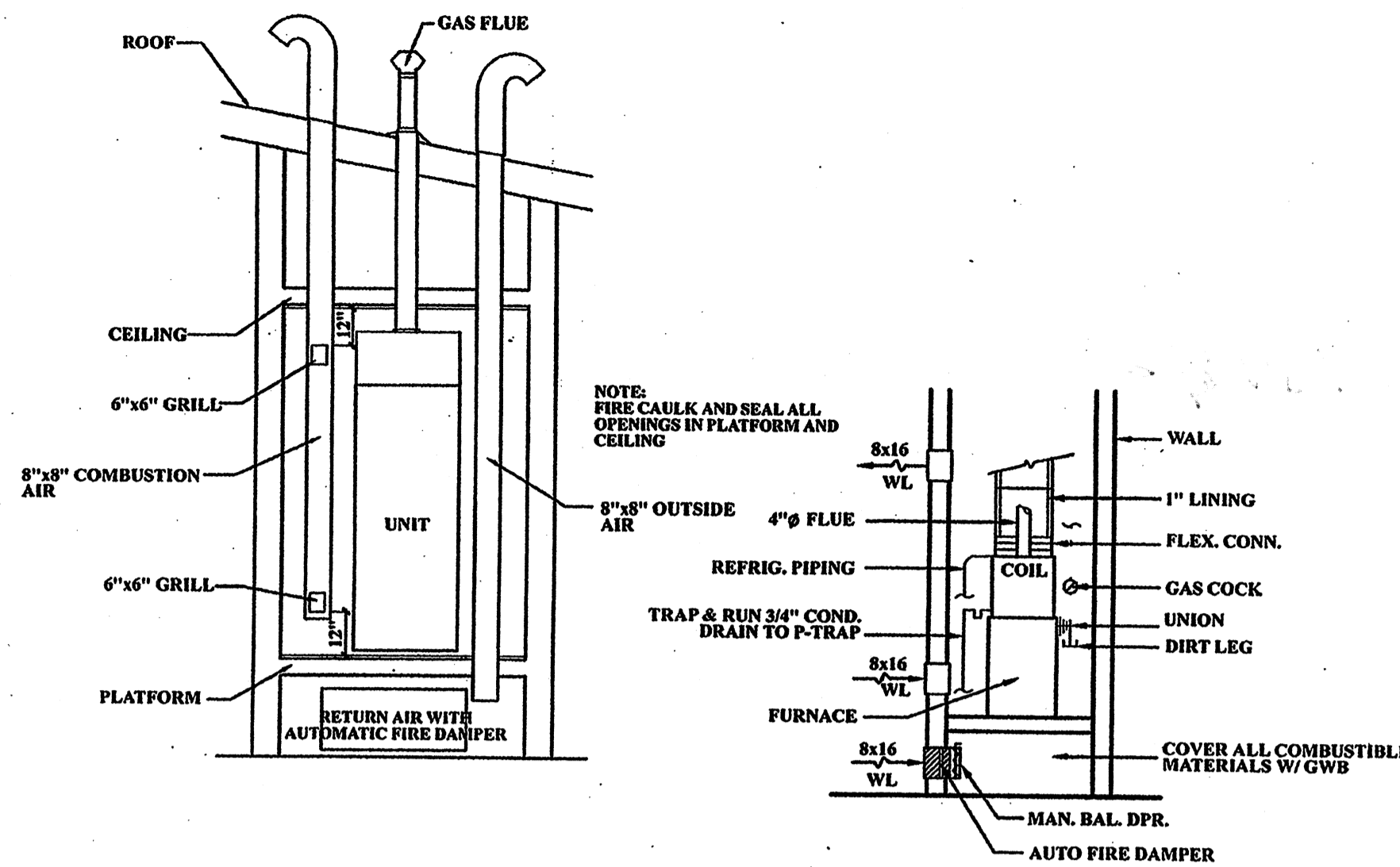


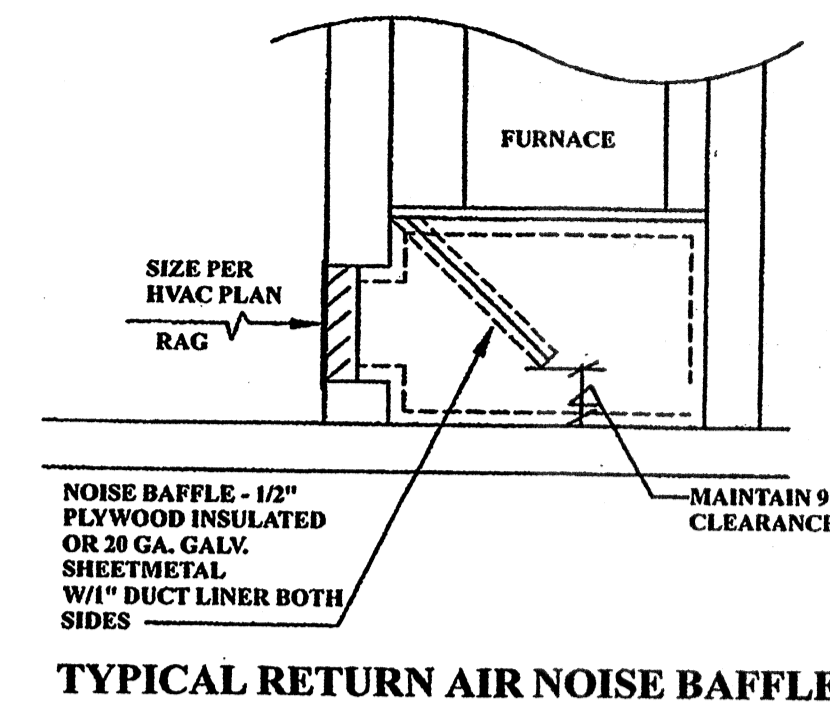
HVAC DETAIL NOTES:

1. EXISTING EXTERIOR WALL.
2. EXISTING FLOOR SYSTEM.
3. FINISHED CEILING-REFER TO ARCHITECTURAL DRAWINGS FOR HEIGHTS.
4. INSULATED SUPPLY DUCT.
5. INSULATED SUPPLY DUCT MAIN DUCT.
6. 5/8" FIRE RATED GYPSUM BOARD ALL WALLS AND CEILINGS OF HVAC CLOSET.
7. FLEXIBLE CONNECTION.
8. FRAMED DOOR OPENING OF HVAC CLOSET.
9. HVAC CLOSET DOOR.
10. VERTICAL AIR HANDLER.
11. COIL UNIT-FULL CASED MULTI-POSITION TYPE.
12. 1/2" CONDENSATE DRAIN LINE WITH "P" TRAP. CONNECT TO EITHER HOUSE.
13. 20 GA. GALV. SHEET METAL OVER PLYWOOD PLATFORM.
14. SMOKE DETECTOR OR FIRESTAT AS SPECIFIED.
15. 2"x4" BLOCKING UNDER UNIT TO ALLOW TRAPPING FOR CONDENSATE DRAIN.
16. 2"x4" PLATFORM FRAMING WITH 1/2" PLYWOOD TOP.
17. RETURN AIR WALL GRILL-REFER TO DRAWINGS FOR SIZE.
18. LINE RETURN AIR FLENUM WITH 1" ACOUSTIC DUCT LINER.
19. 5"x16" OUTSIDE AIR (OSA) ALUMINUM WALL GRILL WITH INSECT SCREEN EQUAL TO RUSKIN MODEL ELF-2H OR EQUAL.
20. AUTOMATIC FIRE DAMPER (AFD).
21. MANUAL DAMPER.
22. SHEET METAL SLEEVE.
23. FILTER.
24. METAL WALL SLEEVE WITH SEALANT.
25. ANGLE 3/4"x1/4" OVER LOWER OPENING WITH THRU-WALL FLASHING.
26. SEAL ALL WALL PENETRATIONS BY DUCTWORK.
27. REFRIGERANT LINES-SIZE PER MANUFACTURER'S SPECIFICATION. INSULATE ALL LINES.
28. NOISE BAFFLE-1/2" PLYWOOD WITH 1" DUCT LINER BOTH SIDES.
29. RETURN AIR FLENUM.

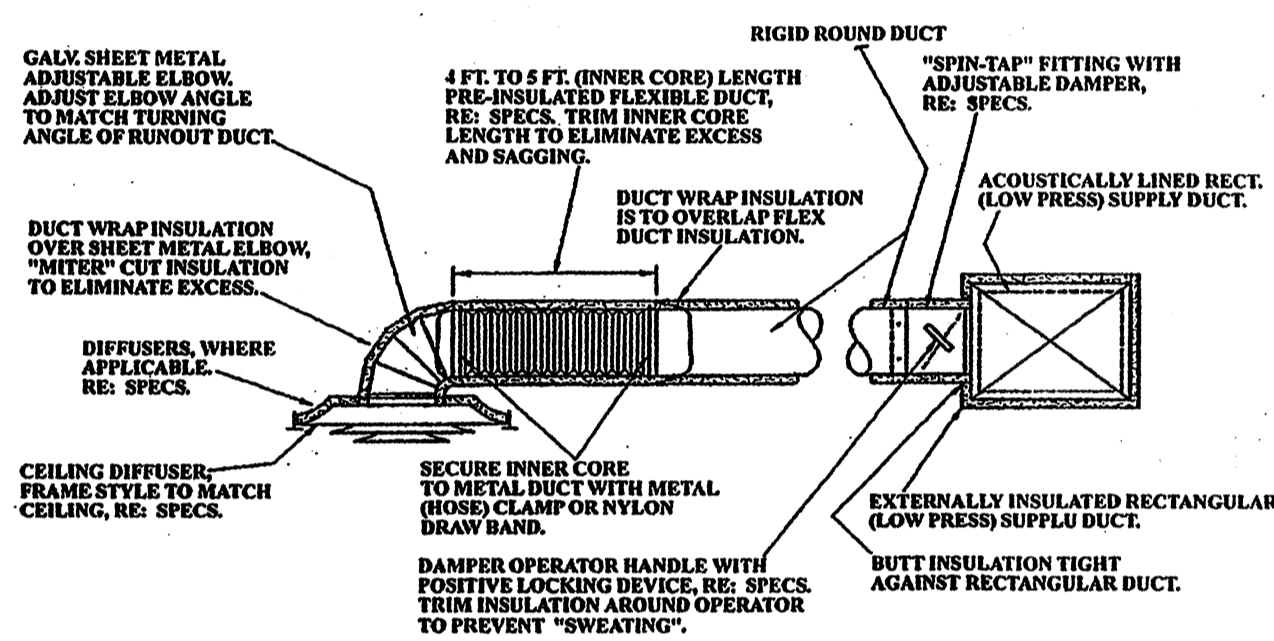
TYPICAL HVAC VERTICAL UNIT ON EXTERIOR WALL DETAIL



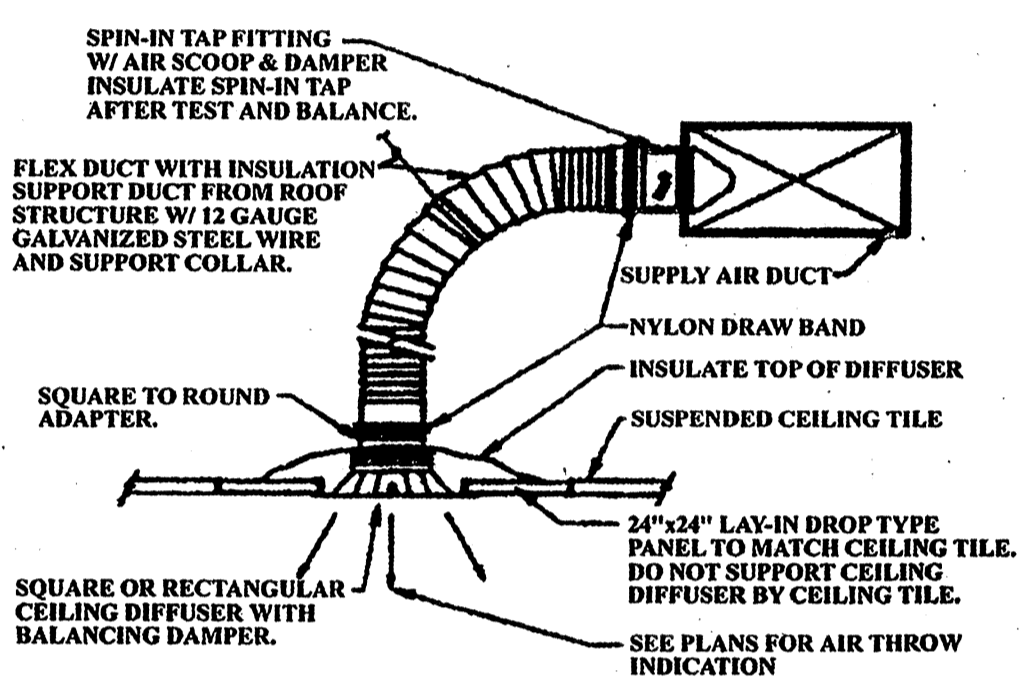
TYPICAL GAS FIRE CLOSET UNIT DETAIL



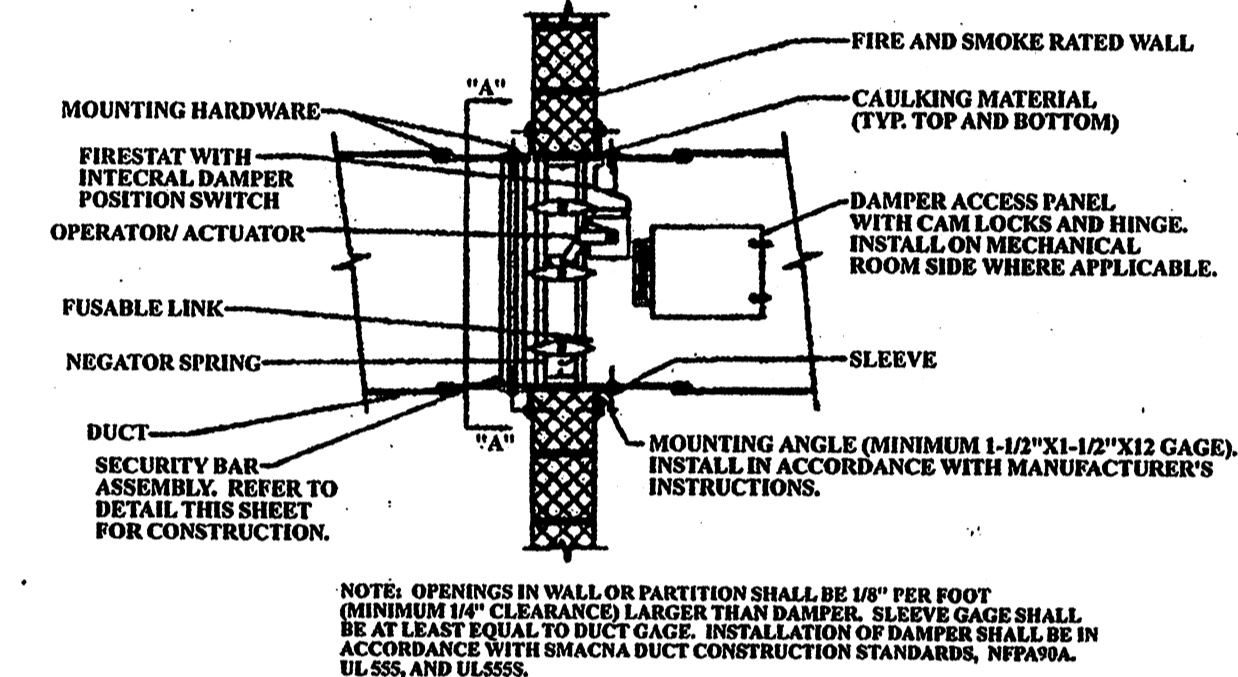
TYPICAL RETURN AIR NOISE BAFFLE



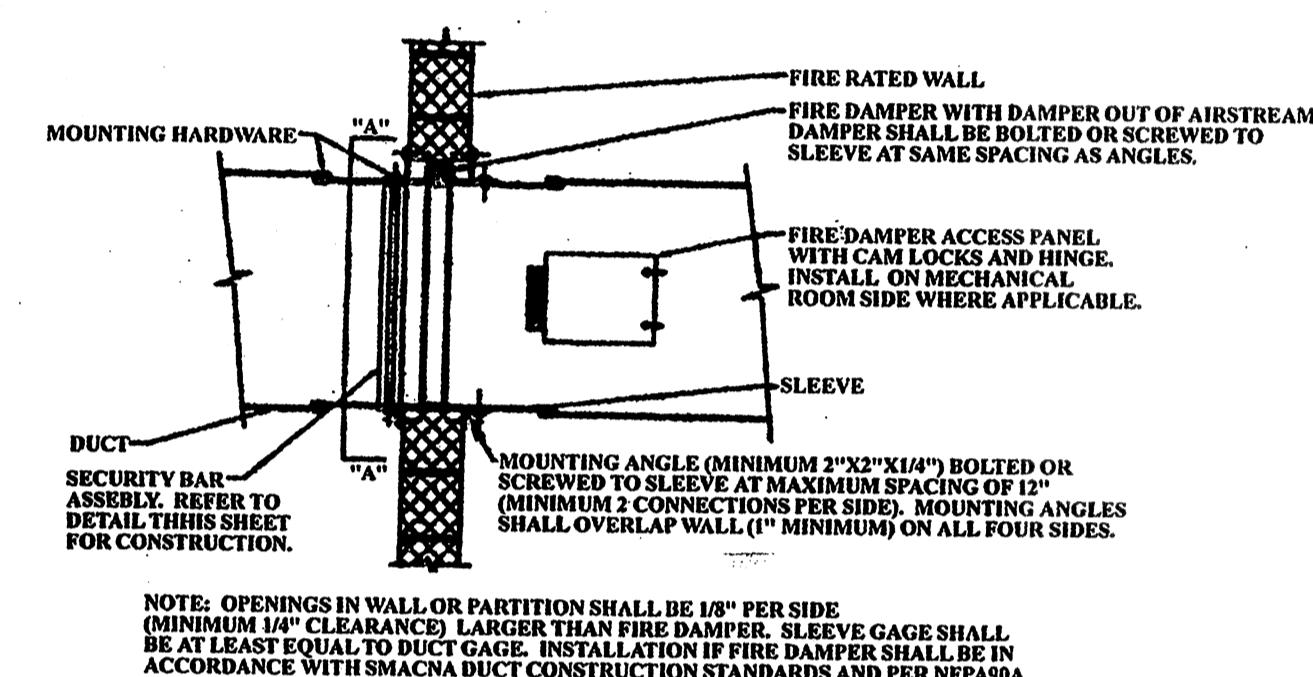
ROUND DUCT BRANCH RUNOUT CONNECTION DETAIL



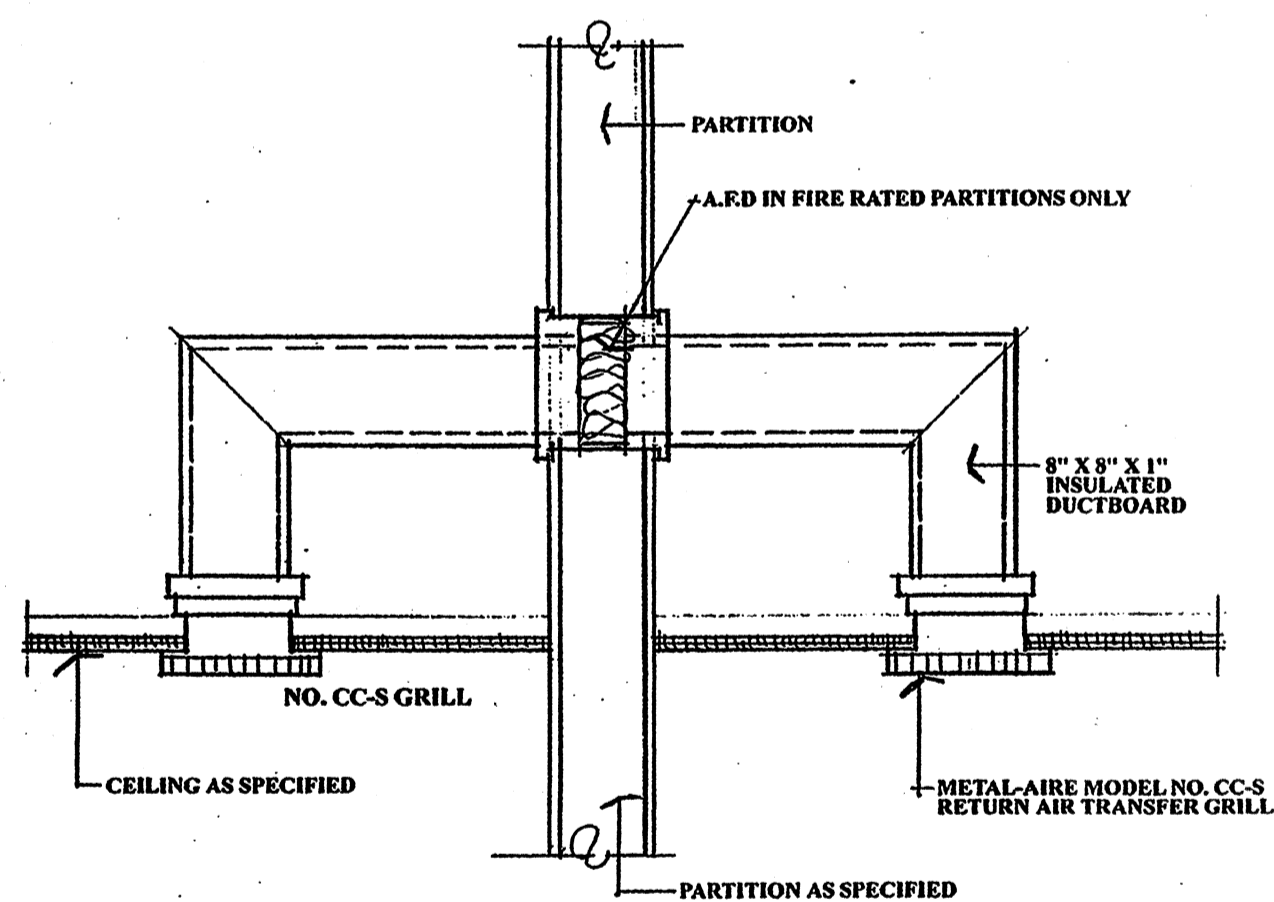
TYPICAL LAY-IN CEILING DIFFUSER DETAIL



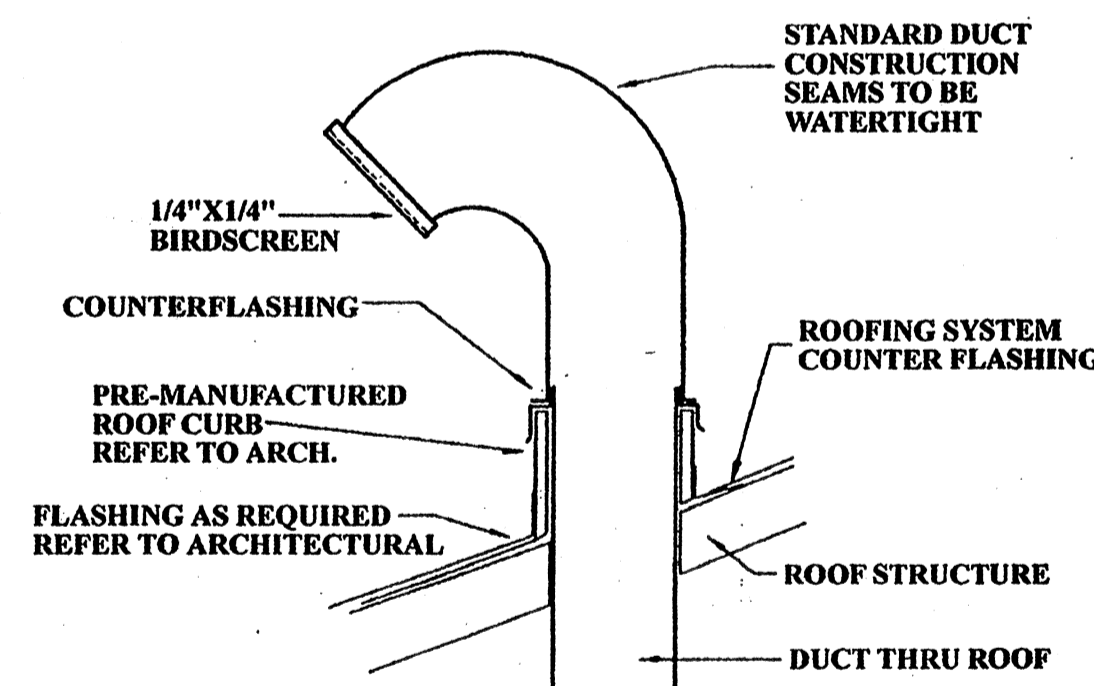
COMBINATION FIRE/SMOKE DAMPER DETAIL



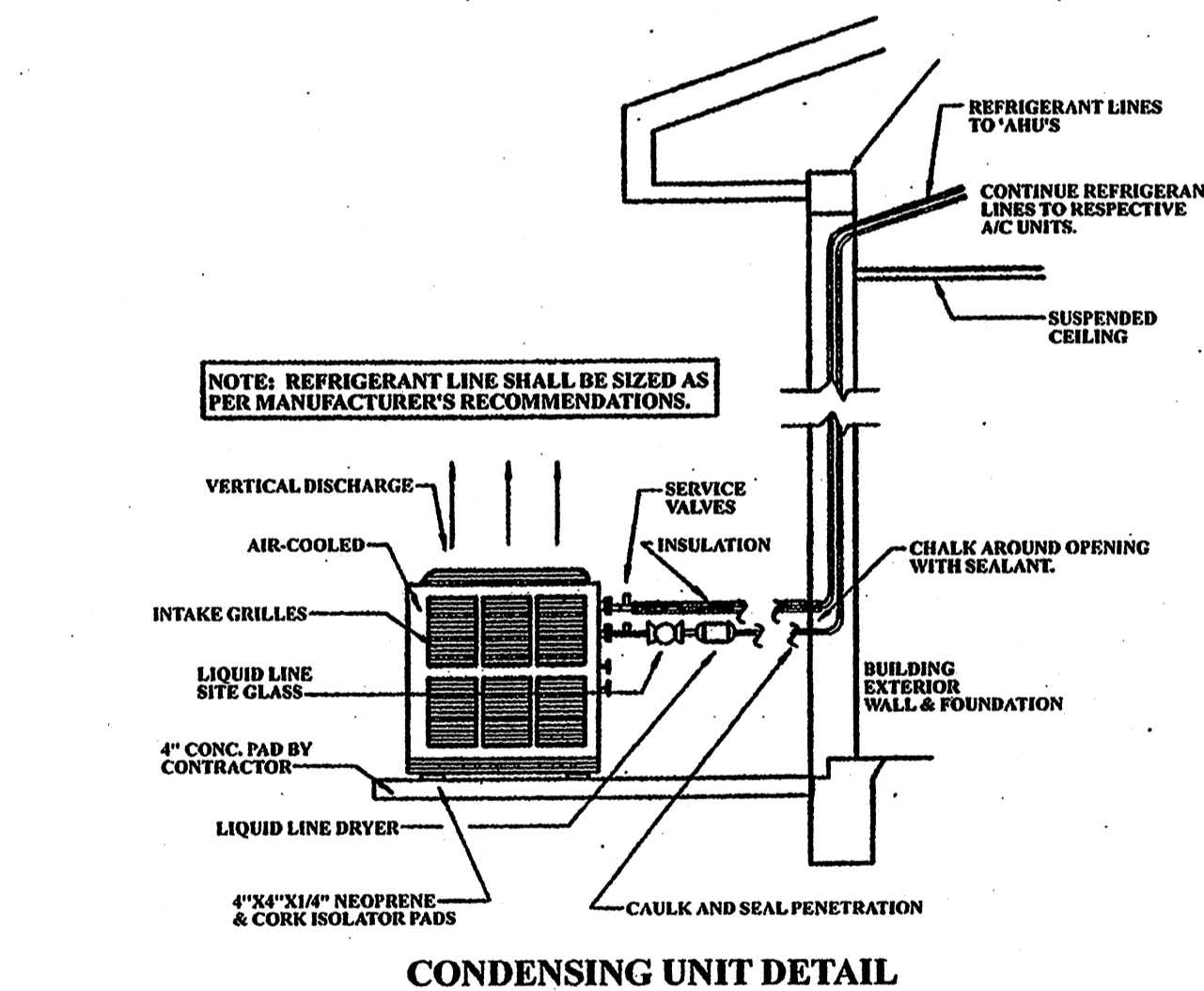
TYPICAL VERTICAL FIRE DAMPER DETAIL



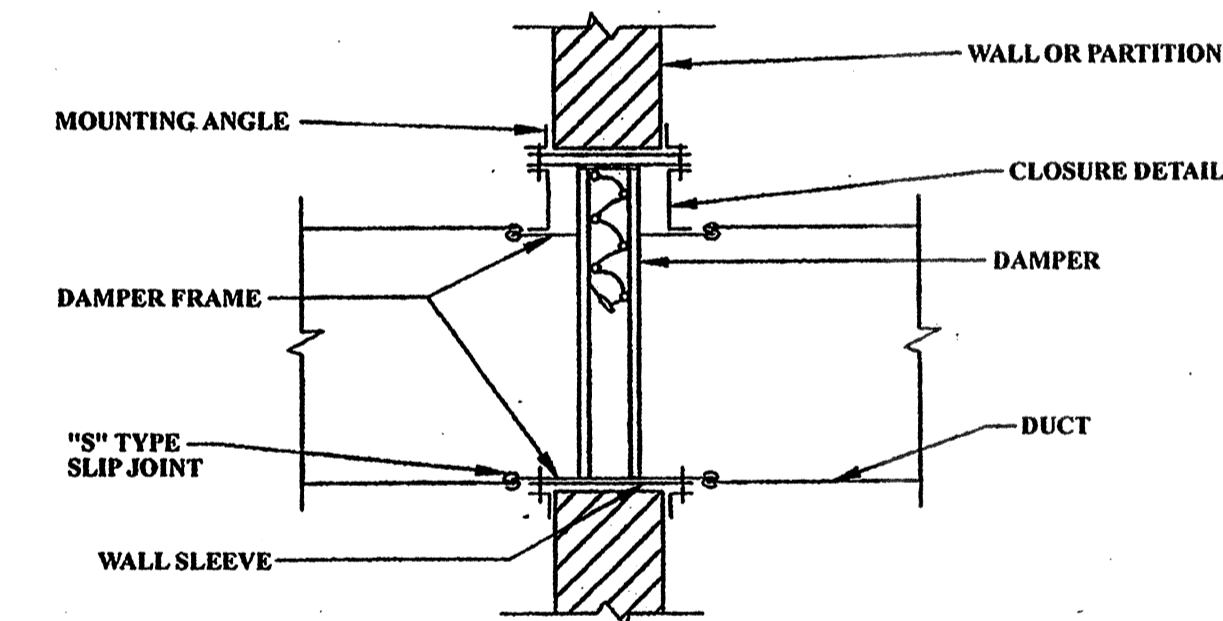
CEILING RETURN-AIR TRANSFER DETAIL



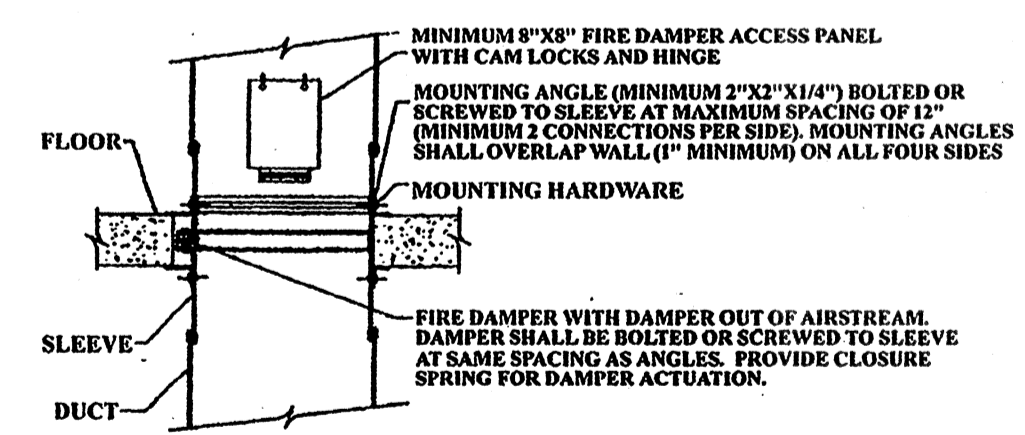
GOOSENECK DETAIL - SLOPED ROOF



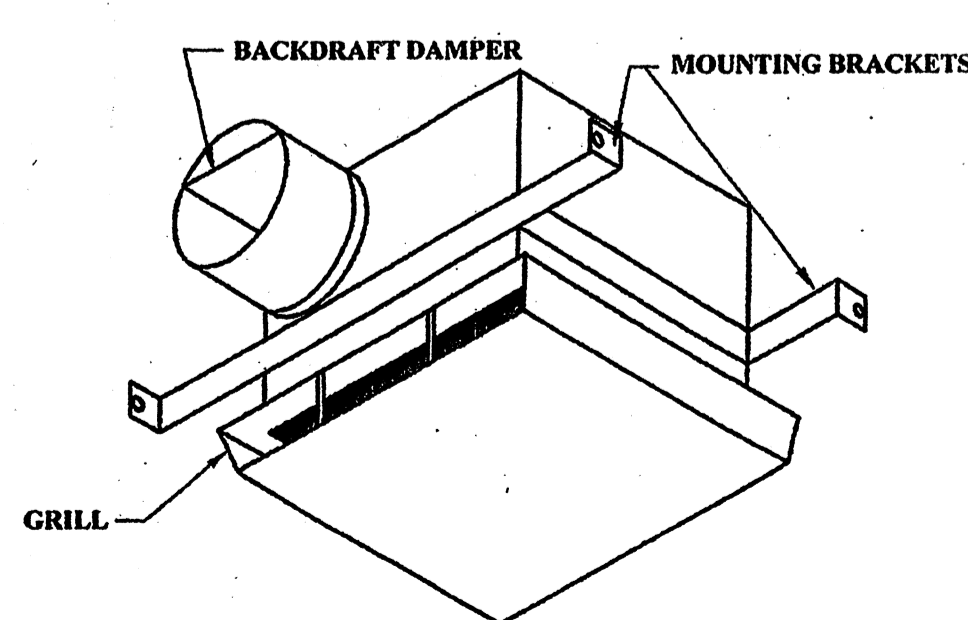
CONDENSING UNIT DETAIL



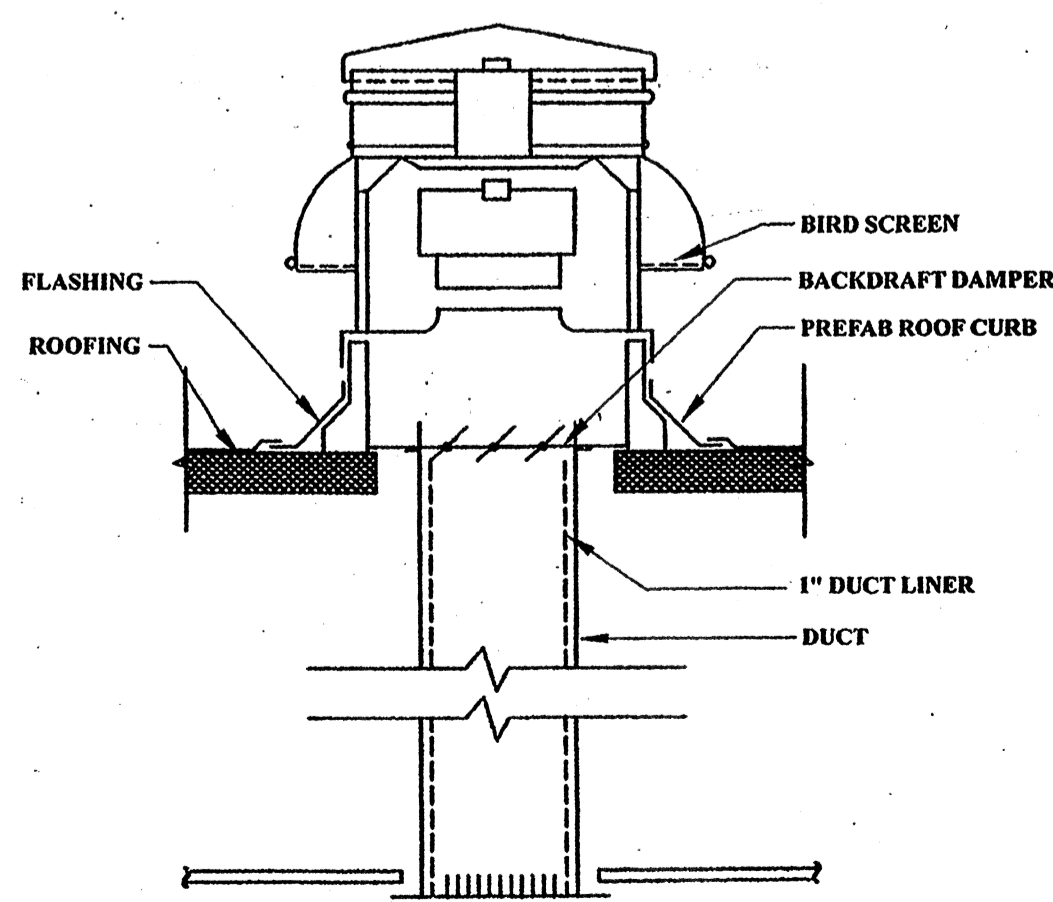
TYPICAL VERTICAL FIRE DAMPER DETAIL



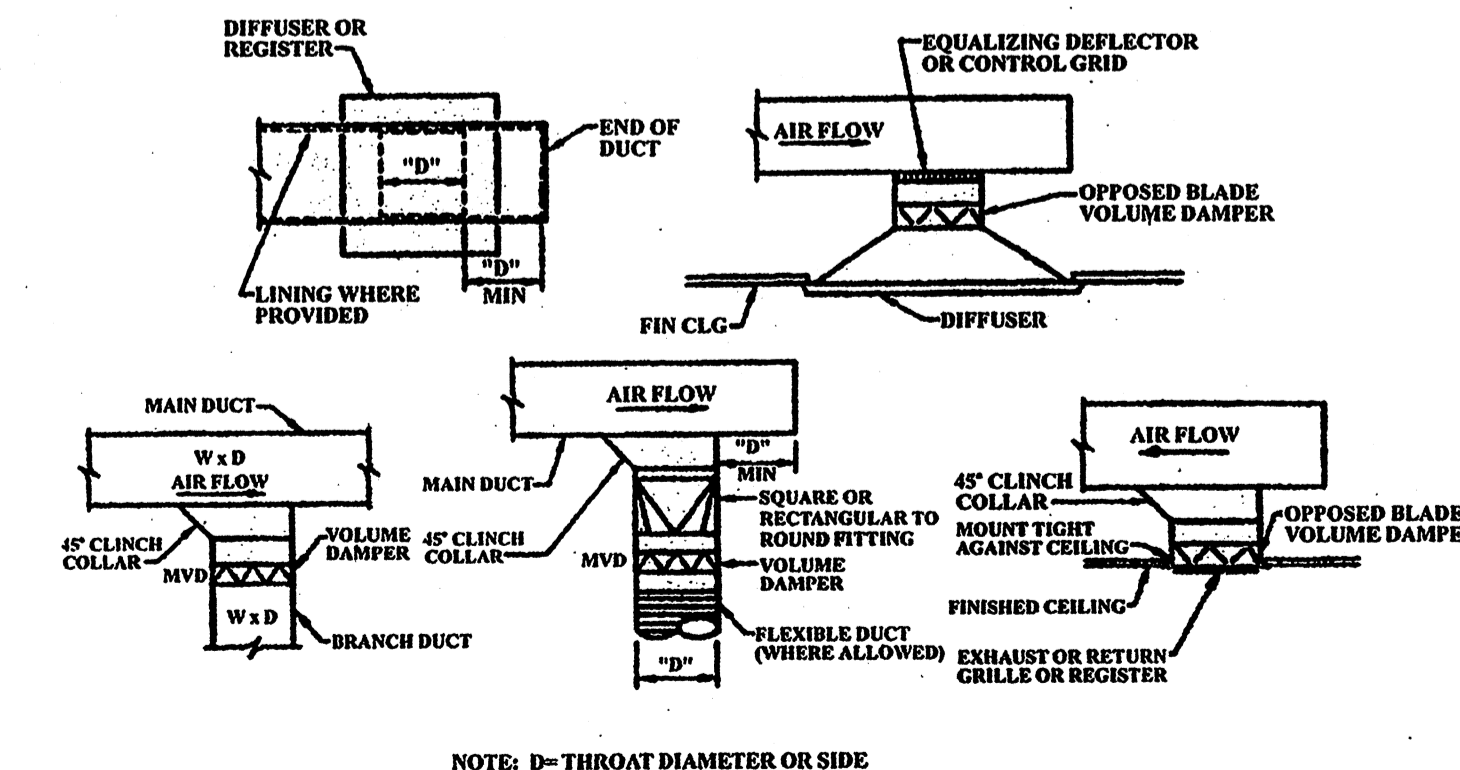
TYPICAL HORIZONTAL MOUNTED FIRE DAMPER DETAIL



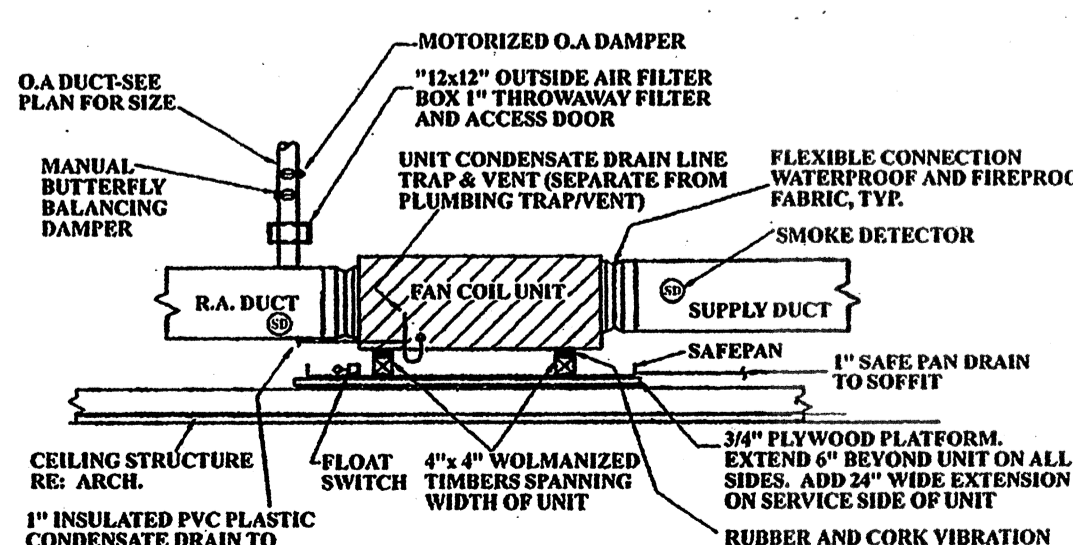
CEILING MOUNTED EXHAUST FAN



ROOF MOUNTED EXHAUST FAN DETAIL



TYPICAL HARD DUCT TO AIR DEVICE CONNECTION DETAILS



HORIZONTAL FAN COIL UNIT DETAIL

| REVISIONS | BY |
|-----------|----|
| | |
| | |
| | |
| | |
| | |

TYPICAL MECHANICAL DETAILS

JOSEPH F. SCHNEIDER, JR. AIA
architect
105 Evangeline Drive Slidell, Louisiana 70460 (985) 847-0714

| | |
|-------------|-------------|
| DRAWN | SCHEIDT |
| CHECKED | |
| DATE | MAY 13 2006 |
| SCALE | AS NOTED |
| JOB NO. | 0600 |
| SHEET | |
| ME-3 | |
| OF | SHEETS |