

FARZAD ADULI

ST. TAMMANY PARISH, LA

JOB NO: XXXX
DATE: X-X-2013
DRAWN BY: BSN
CHECKED BY: BSN

DAMMON ENGINEERING INC
Architects & Engineers

554 OLD SPANISH TRAIL
CHIEF ENGINEER: KAVIN DAMMON, NCAES
SUDLIT, LA 70458

954 OLD SPANISH TRAIL
CHIEF ARCHITECT: KAVIN DAMMON, NCAES
DAMMON ENGINEERING, INC
PHONE: 905-649-5032
FAX: 905-641-5950

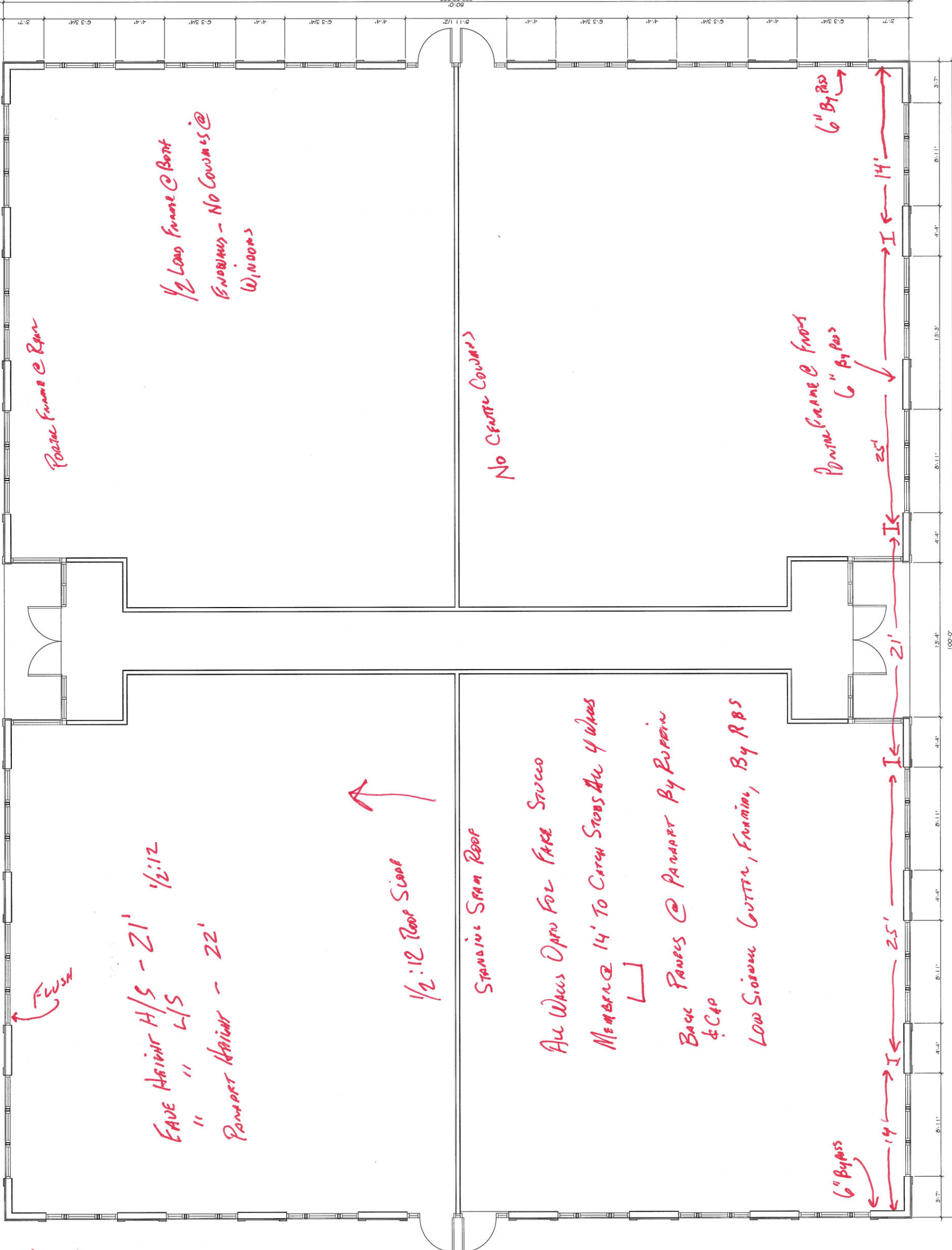
FLOOR PLAN

SHEET No: of 8

AI

OUTRIGGERS & FRAMING SAME AS QUOTE VOL 83A

JOB NAME - ADULI
LOCATION - COULMAY



FLUSH

FACE HEIGHT H/S - 21' 1/2:12
L/S

POSTAL HEIGHT - 22'

1/2:12 Roof Slope

↑

STANDING SPAN ROOF

ALL WALLS OPEN FOR FACE STUCCO

MEMBER @ 14' TO CATCH STOPS ALL 4 WALLS

BACK PANELS @ POSTAL BY PURPIN & CAP

LOW SILICON GUTTER, FRAMING, BY RBS

1/2 LOW FRAME @ POSTAL

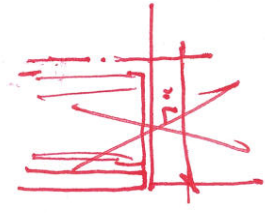
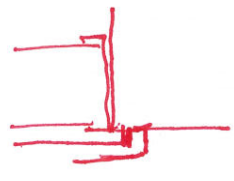
FRAMING - NO COVER @ WINDOWS

No Center Columns

POSTAL FRAME @ POSTAL

6" By 8"

6" By 8"



FLOOR PLAN
SCALE: 1/4" = 1'-0"