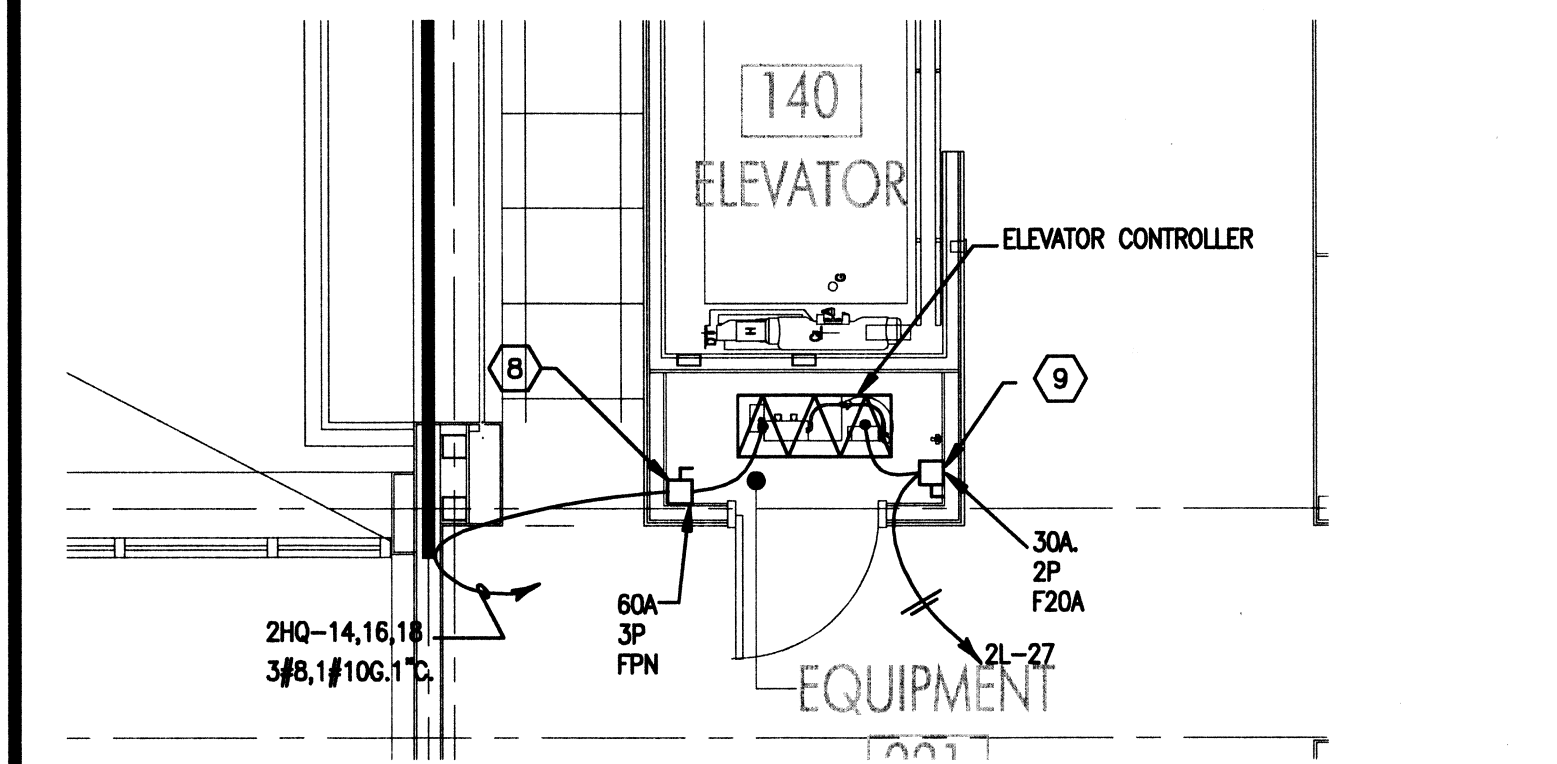
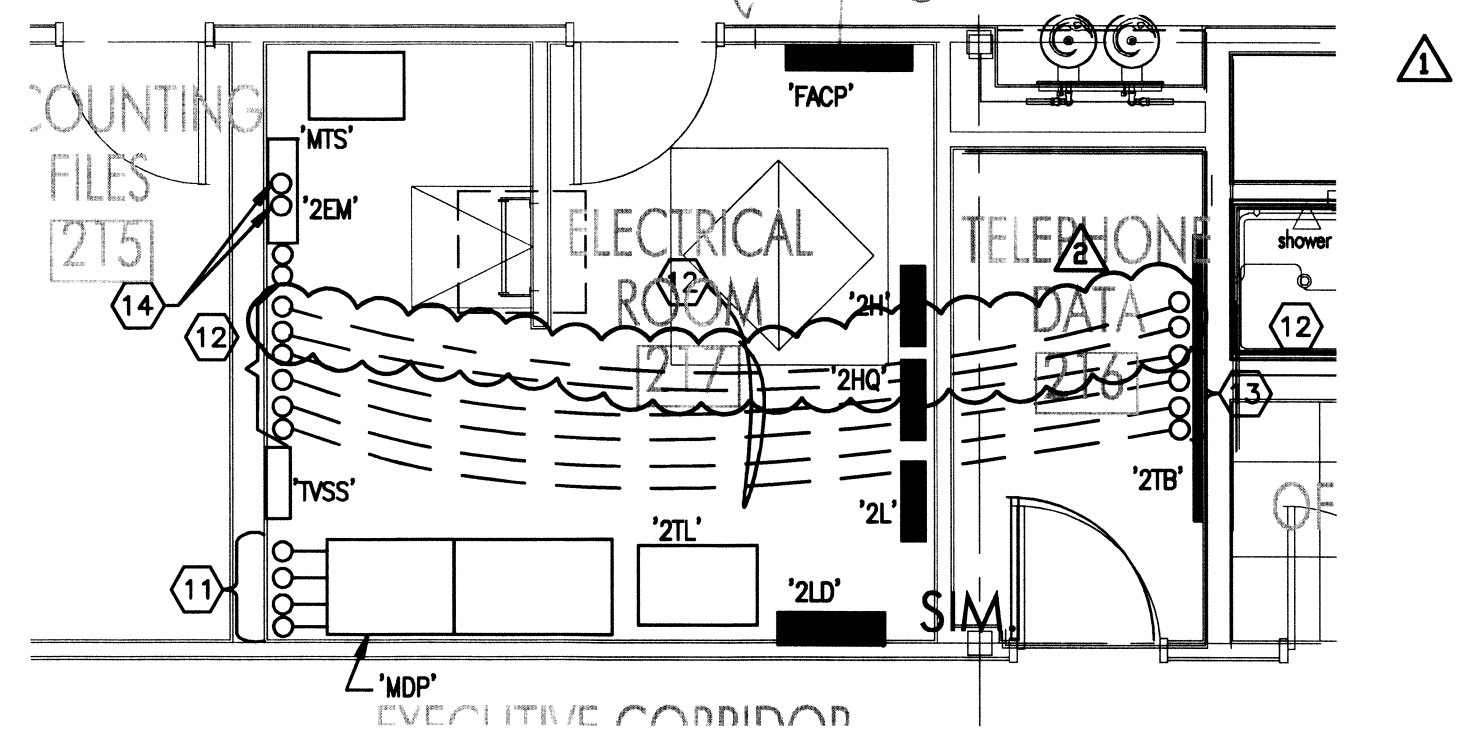


**1 SECOND LEVEL POWER PLAN**  
 E-202 1/8" = 1' - 0"



**2 ENLARGED ELEVATOR MACHINE ROOM**  
 E-202 1/4" = 1' - 0"



**3 ENLARGED ELECTRICAL ROOM**  
 E-202 1/4" = 1' - 0"

**SPECIFIC NOTES:**

- 1 CONNECT TO THE ELECTRIC WATER COOLERS.
- 2 TELEPHONE BACKBOARD '2TB', SEE SHEET E-302.
- 3 CONNECT THE GFI DUPLEX RECEPTACLE FROM THE LINE SIDE OF THE RECEPTACLE TO THE LIGHTING FIXTURE INDICATED IN THIS ROOM. SEE SHEET E-102.
- 4 MOUNT THE QUAD RECEPTACLES FLUSH WITH THE TELEPHONE BACKBOARD. PROVIDE EXTENSION BOXES AS REQUIRED.
- 5 INSTANTANEOUS WATER HEATER, WH-3, 16.0KW, 277V, 3ø. PROVIDE (2) SEPARATE POWER CONNECTIONS AS INDICATED ON THE DRAWING.
- 6 PROVIDE A 60A, 2P FUSED DISCONNECT SWITCH. FUSE THE SWITCH WITH 40A FUSES. PROVIDE A BAKELITE PHENOLIC NAMEPLATE AT EACH DISCONNECT SWITCH AND THE INSTANTANEOUS WATER HEATER THAT READS, "BOTH DISCONNECT SWITCHES MUST BE TURNED TO THE OFF POSITION BEFORE WORKING ON THE INSTANTANEOUS WATER HEATER".
- 7 FOR ADDITIONAL WORK IN THE ELEVATOR MACHINE ROOM, REFER TO DETAIL 2 ON THIS SHEET.
- 8 PROVIDE BAKELITE PHENOLIC NAMEPLATE FOR THE ELEVATOR POWER DISCONNECT SWITCH THAT READS, "ELEVATOR POWER DISCONNECT".
- 9 PROVIDE BAKELITE PHENOLIC NAMEPLATE FOR THE ELEVATOR CAB LIGHTS THAT READS "ELEVATOR CAB LIGHTS DISCONNECT".
- 10 FOR ELECTRICAL GEAR LAYOUT AND CONDUITS IN THESE ROOMS, SEE DETAIL 3 ON THIS SHEET.
- 11 TURN SWITCHBOARD CONDUITS AND POWER FEEDER INTO THE MAIN CIRCUIT BREAKER SECTION OF THE SWITCHBOARD. PROVIDE TOP HAT FOR SWITCHBOARD IF REQUIRED.
- 12 RISE UP ABOVE THE ACCESSIBLE CEILING WITH (2) 3" TELEPHONE CONDUITS, (2) 2" TV CONDUITS AND (2) 2" WI-FI POS SYSTEM CONDUITS AND EXTEND TO TELEPHONE BACKBOARD '2TB'.
- 13 SEE DETAIL 2/E03.
- 14 STUB-UP THE (2) 2 1/2" CONDUITS AND THE POWER FEEDER FROM LEVEL 1 CEILING CAVITY INTO PANELBOARD '2EM'.

**ASSOCIATED DESIGN GROUP, INC.**  
 CONSULTING ENGINEERS

**CORPORATE OFFICE**  
 114 Toledo Drive  
 Lafayette, Louisiana 70506  
 (507) 234-5710

**NEW ORLEANS BRANCH**  
 1010 Common St.  
 Suite 2405  
 New Orleans, LA 70112  
 (504) 581-6333

Project # 08213

COPYRIGHT © 2009 by Waggoner & Ball Architects, APC  
 All rights reserved. No part of this work covered by the copyright notice may be reproduced or used in any form or by any means - graphic, electronic or mechanical, including photocopying, recording, taping or information storage and retrieval systems - without written permission of the copyright holder.

**New Orleans City Park**  
 Administration Building  
 1 Palm Drive  
 New Orleans, Louisiana 70124  
 Project No. 01-107-05B-13 Part No. BZ  
 Site Code 1-36-066

SHEET TITLE:  
 SECOND LEVEL  
 POWER PLAN

DATE: March 23, 2009  
 DRAWN BY: JAM  
 REVISION:  
 9-15-09  
 CONDUIT ROUTING REVISIONS  
 9-15-09  
 WI-FI POS SYSTEM CONDUITS  
 9-15-09

Bid/Construction Documents