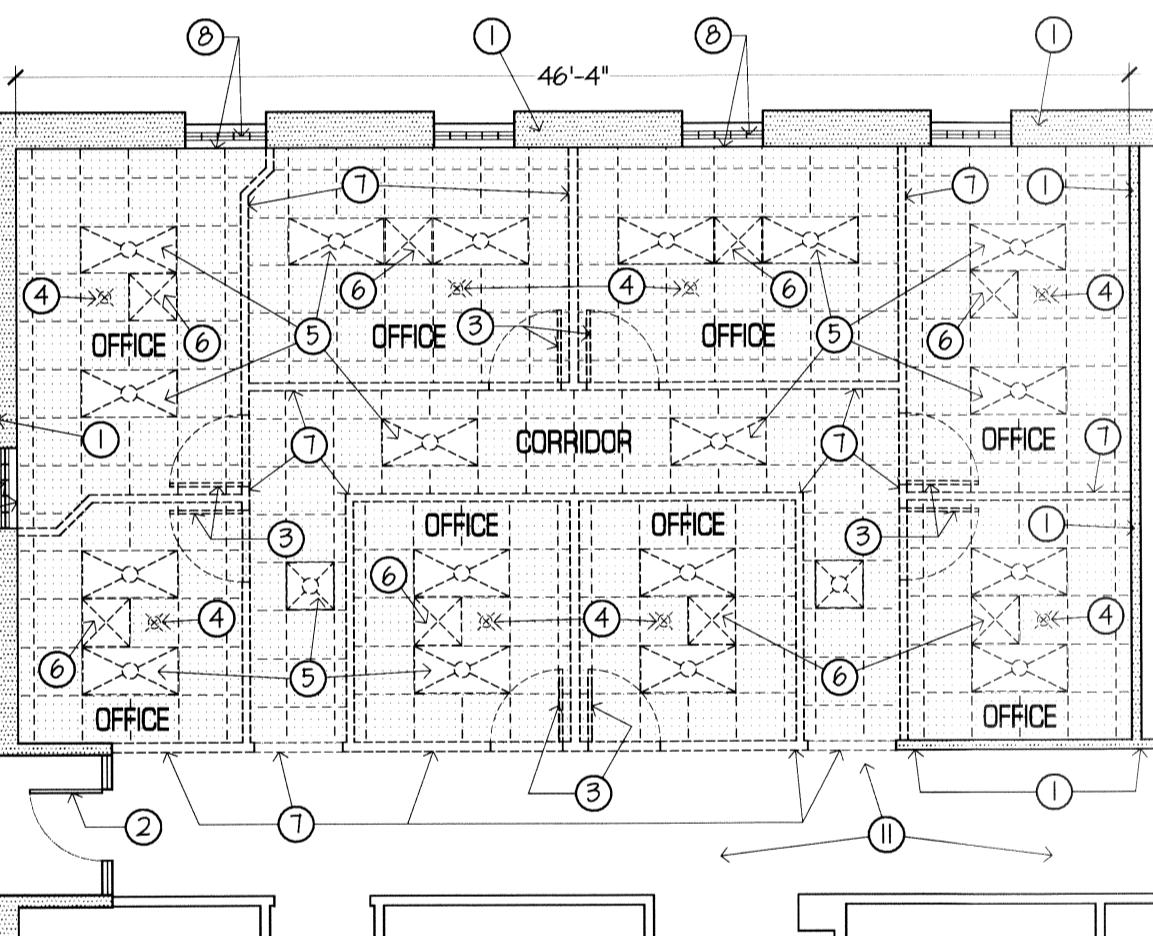
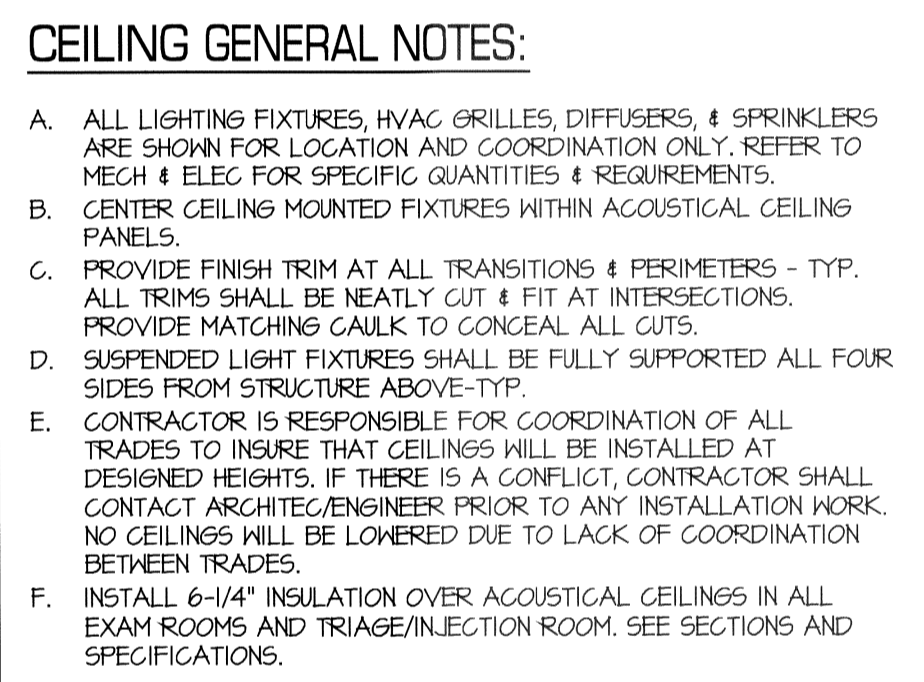
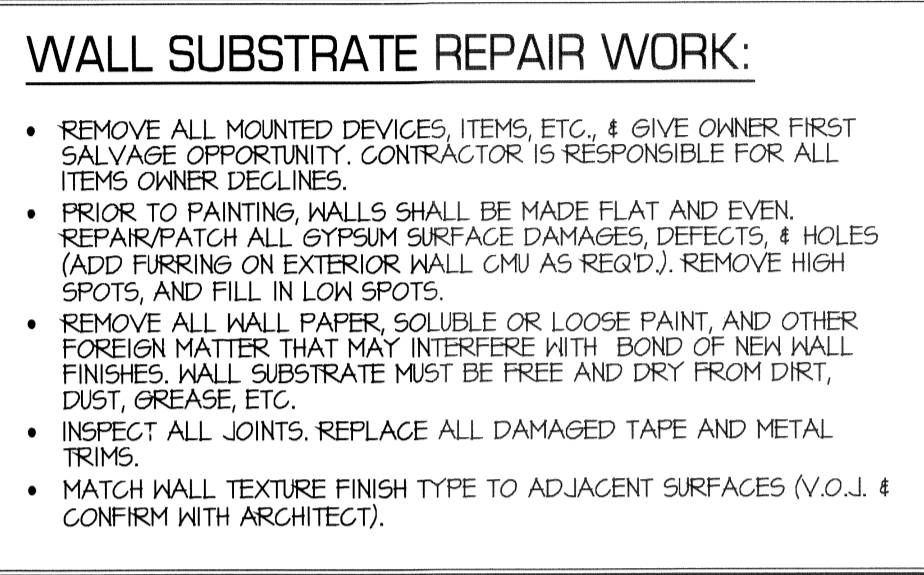
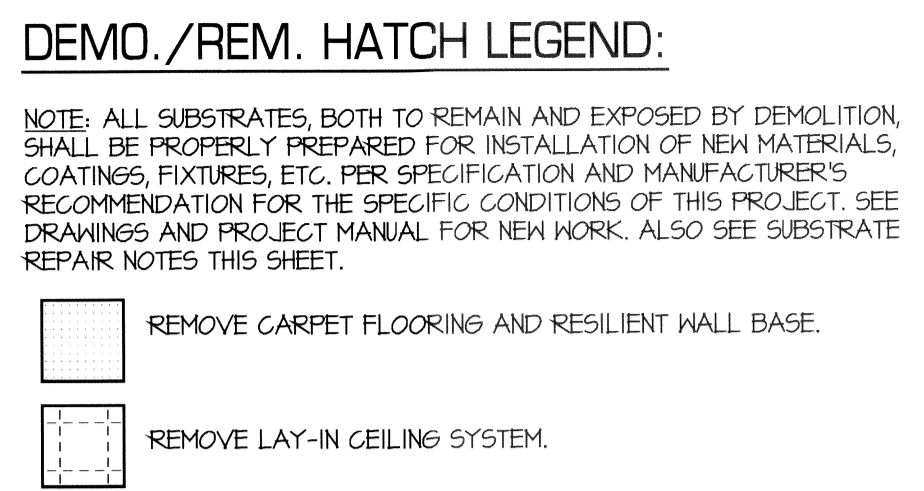


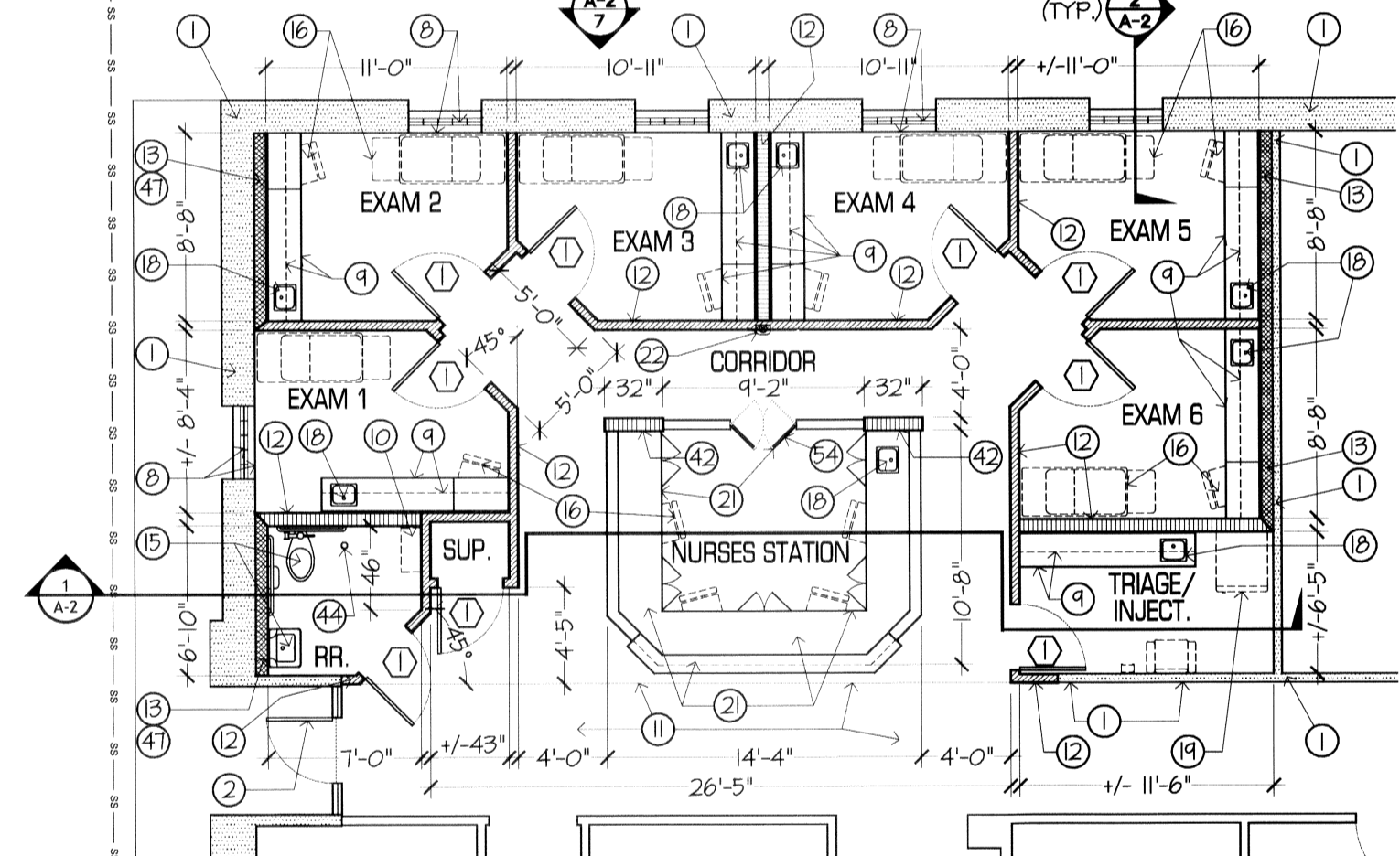
1 DEMOLITION / REMEDIATION PLAN
scale: 1" = 20'-0"
NORTH

SPECIFIC KEY NOTES (THIS SHEET):

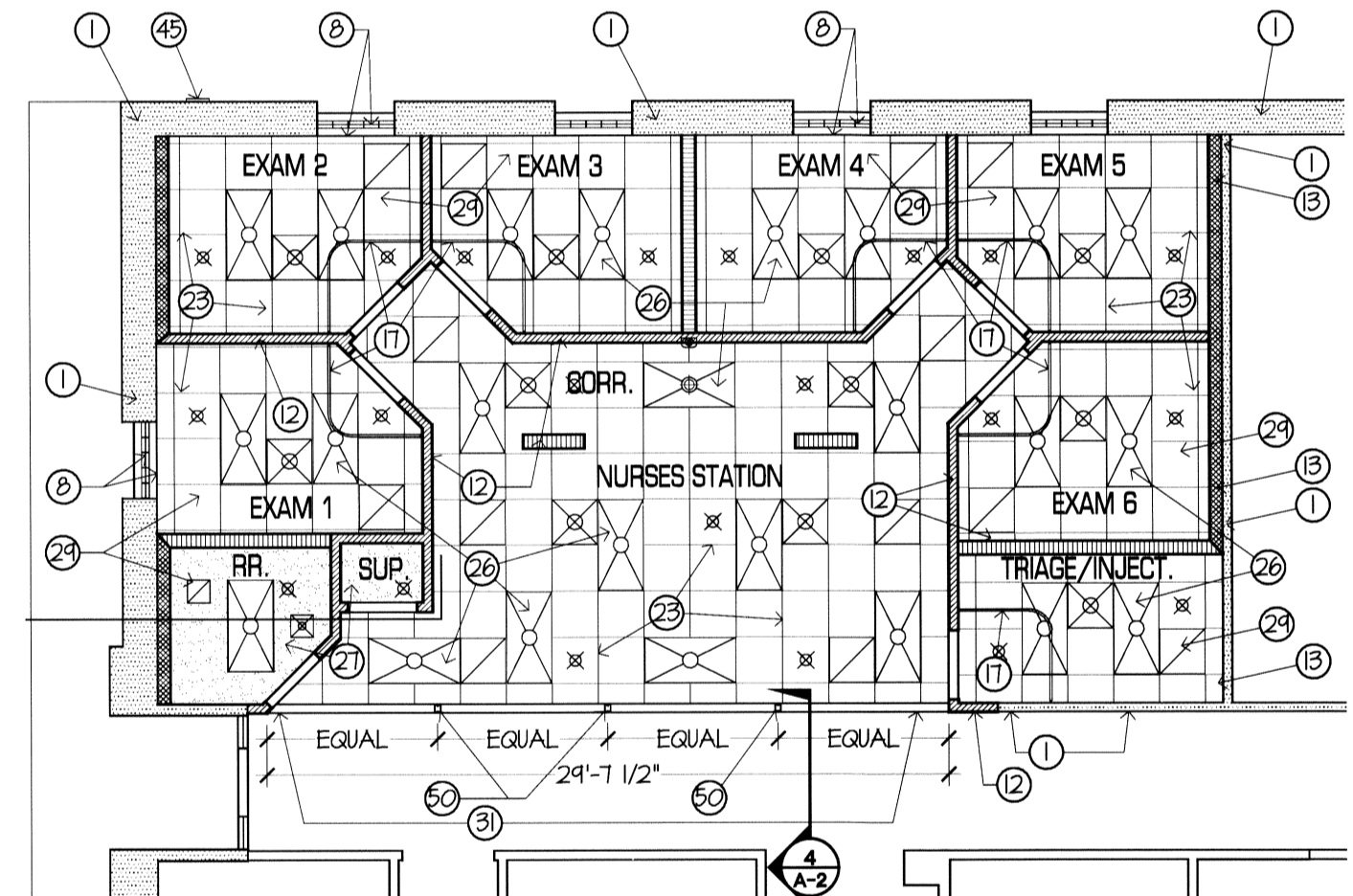
- EXST. WALL (SHOWN SHADED) - TYP. REMOVE/REPLACE/REFINISH GYPSUM AS NEEDED FOR ELECTRICAL WORK. ALSO SEE REMEDIAL SCOPE IN "WALL SUBSTRATE REPAIR WORK" NOTE ON THIS SHEET FOR ADDITIONAL REQUIREMENTS.
- EXST. DOOR TO REMAIN, PROTECT AS REQUIRED.
- REMOVE WOOD DOOR AND HOLLOW-METAL FRAME.
- EXISTING SPRINKLER HEAD, SEE MECHANICAL FOR WORK - TYP.
- EXISTING LIGHT FIXTURE, SEE ELECTRICAL FOR WORK - TYP.
- EXISTING HVAC GRILLE, SEE MECHANICAL FOR WORK - TYP.
- REMOVE EXISTING STUD/GYPSUM WALL (SHOWN DASHED), FULL HEIGHT. BRACE PORTIONS TO REMAIN AS REQUIRED UNTIL NEW WALLS ARE SECURELY INSTALLED. PATCH & REPAIR ANCHOR POINTS IN WALLS & CONCRETE SLAB TO BLEND FLUSH & UNIFORMLY WITH SURROUNDING SURFACES. COORDINATE W/ MECH & ELEC. FOR REUSE/CAP/RELOCATION OF ALL EXISTING IN-WALL SERVICES (DATA, POWER, PLUMBING, ETC.).
- EXISTING GLASS BLOCK WINDOW & WOOD SILL TO REMAIN. INSPECT CONDITION OF SILLS, REPAIR/REPLACE DAMAGED SILLS, AND PREPARE & PAINT ALL SILLS - TYP.
- MEDICAL-GRADE WALL CABINETS, BASE CABINETS, AND CONTINUOUS COUNTERTOPS, SEE 1/A-2 FOR TRIAGE/INJECTION AND 5/A-2 FOR EXAMS (TYP. OR OPP. PER FLOOR PLAN 3/A-1).
- MEDICAL-GRADE WALL CABINETS, SEE SHEET A-2.
- PROTECT CORRIDOR VCT FLOORING TO REMAIN.
- NEW SOUND WALL (SHOWN HATCHED), EXTEND 1'-0" ABOVE FINISHED CEILING HEIGHT. MTL. STUDS PER HATCH (3-5/8") 20 GA. AT 16" O.C. W/ ACOUSTICAL BATT INSULATION, 5/8" GYPSUM BOARD (BOTH SIDES). SET BOTTOM TRACK IN ACOUSTICAL SEALANT AND SECURE TO SLAB AT 16" O.C. BRACE WALLS FOR STABILITY, SEE 1/A-2 - TYP.
- NEW PLUMBING CHASE (SHOWN CROSS-HATCHED), EXTEND 1'-0" ABOVE FINISHED CEILING HEIGHT. 6" 20 GA. METAL STUDS AT 16" O.C. W/ ACOUSTICAL BATT INSULATION, 5/8" GYPSUM BOARD (ONE SIDE). SET BOTTOM TRACK IN ACOUSTICAL SEALANT AND SECURE TO SLAB AT 16" O.C.
- VCT REFERENCE POINT FOR ALIGNMENT - TYP.
- WATERCLOSET AND LAVATORY PER MECHANICAL. ALSO SEE SHEET A-2 FOR ADDITIONAL RESTROOM INFORMATION.
- FURNITURE SHOWN DASHED FOR CLARITY, N.I.C. - TYP.
- CEILING-MOUNTED PRIVACY CURTAIN - TYP. SEE ACCESSORY SCHEDULE.
- HANDWASH SINK PER MECHANICAL.
- REFRIGERATOR SHOWN DASHED FOR CLARITY, N.I.C.
- NEW VCT FLOORING, PATTERN SHOWN PER FLOOR PLAN. DO NOT QUARTER-TURN TILE.
- NURSES STATION BUILT-IN CASEWORK W/ GATED BACK PARTITION AND SOLID SURFACE COUNTERTOP. SEE ENLARGED PLAN 6/A-1.
- SEMI-RECESSED FIRE EXTINGUISHER, SEE SECTION 10520.
- LAY-IN ACOUSTICAL CEILING SYSTEM THROUGHOUT MEDICAL SUITE, 2'-0" x 2'-0" TILES IN 15/16" GRID SUPPORTED FROM STRUCTURE ABOVE. MATCH PREVIOUS CEILING HEIGHT, APPROXIMATELY 9'-6" - V.O.J. INSTALL CEILING GRID SPACED & TILE TRIMMED AS SHOWN ON CEILING PLAN TO PROVIDE CENTERED LIGHT FIXTURE LOCATIONS.
- DIMENSION REFERENCE POINT.
- HVAC GRILLE PER MECH - TYP.
- 2' x 4' LAY-IN LIGHT FIXTURE PER ELEC - TYP.
- PAINTED GYPSUM CEILING (SHOWN STIPPLED) ON 6" 20 GA. METAL STUDS AT 16" O.C. MATCH PREVIOUS CEILING HEIGHT, APPROXIMATELY 9'-6" - V.O.J.
- SPRINKLER HEAD PER MECHANICAL - TYP. MODIFY EXST. SYSTEM DROPS PER NEW LAYOUT.
- PROVIDE 6-1/4" LOW FLAME SPREAD, ACOUSTICAL BATT INSULATION ABOVE CEILING TILES IN EXAM ROOMS AND TRIAGE/INJECTION.
- CEILING GRID REFERENCE POINT FOR ALIGNMENT - TYP.
- NEW HEADER TO SPAN MEDICAL SUITE ENTRANCE. SEE 4-A/2.
- PREPARE & PAINT ALL SURFACES OF EXISTING WALL (SHOWN SHADED) TO REMAIN EXPOSED IN PROJECT AREA - TYP.
- THIS EXISTING WALL EXTENDS TO ROOF DECK ABOVE.
- 3-5/8" METAL STUDS AT 16" O.C.
- DOUBLE STUD HEADER - TYP.
- 5/8" GYPSUM BOARD.
- CONTINUOUS CAULK.
- DOOR, SEE SCHEDULE.
- WALL ANCHOR AT JAMB, THREE (3) PER SIDE.
- DOUBLE STUD AT JAMB - TYP.
- HOLLOW-METAL FRAME, SEE SCHEDULE.
- END WALL TO BE USED AS UTILITY CHASE. EXTEND 1'-0" ABOVE THE CEILING FINISHED CEILING HEIGHT. 6" 20 GA. MTL. STUDS AT 16" O.C., 5/8" GYPSUM BOARD ALL SIDES, W/ TRACK SECURED TO SLAB AT 16" O.C. BRACE WALLS FOR STABILITY. SEE 1/A-2, MECHANICAL, AND ELECTRICAL.
- ALIGN VCT JOINTS W/ EXST. CORRIDOR FLOORING TILE (V.O.J.).
- FLOOR DRAIN LOCATION IS SHOWN ON 5/1-A. ANCHOR DRAIN BODY TO EXST. SLAB PER MANUFACTURER'S RECOMMENDATIONS. PROVIDE COLLAR FLUSH W/ FINISH FLOOR. ALSO SEE MECHANICAL.
- 12 x 12 LOUVERED GRILLE ON EXTERIOR WALL PER MECH. SEAL PENETRATIONS WEATHER AND WATER-TIGHT. COORDINATE W/ ALL TRADES TO ENSURE CLEARANCE TO CEILING HEIGHTS, WALL CAVITY, ETC. IN CASE OF CONFLICT, CONSULT W/ ARCHITECT & ENGINEER PRIOR TO INSTALLATION.
- SLOPED FLOORING TRIM, SATIN ANODIZED ALUMINUM, 2" W x 1/4" H TO TRANSITION SMOOTHLY FROM PORCELAIN TILE TO VCT. PROVIDE "RENO RAMP AERF 60 60" AS MANUFACTURED BY SCHLUTER (OR PRIOR APPROVED EQUAL).
- NO INSULATION NEEDED IN THIS WALL.
- PLASTIC LAMINATE BASE CABINET W/ DRAWER, DOORS, AND ADJUSTABLE SHELF.
- PLASTIC LAMINATE BASE CABINET W/ SINK, FALSE DRAWER FACE, DOORS, AND ACCOMMODATIONS FOR SUMP PUMP INSIDE CABINET (POWER, PLUMBING, ETC.). ALSO SEE MECHANICAL AND ELECTRICAL.
- 3-5/8" 18 GA. DOUBLE STUD HANGER FOR HEADER. SECURE TO STRUCTURE ABOVE AND BRACE FOR STABILITY.
- 1/2" SOLID SURFACE COUNTERTOP, EDGING, NOSING, ETC. - TYP. PROVIDE 1/8" ROUND OVER ALL EDGES.
- RUBBER GROMMET W/ 2" INSIDE DIAMETER.
- 3/4" PLYWOOD UPPER COUNTER SUPPORT W/ PLASTIC LAMINATE ON ALL EXPOSED SURFACES.
- DOUBLE-ACTING PLASTIC LAMINATE GATE. SEE 1/A-2.
- PLASTIC LAMINATE BACK PARTITION W/ SOLID SURFACE CAP. ANCHOR TO SLAB AND WALLS AS REQ'D. ALSO SEE SECTION 15/A-2.



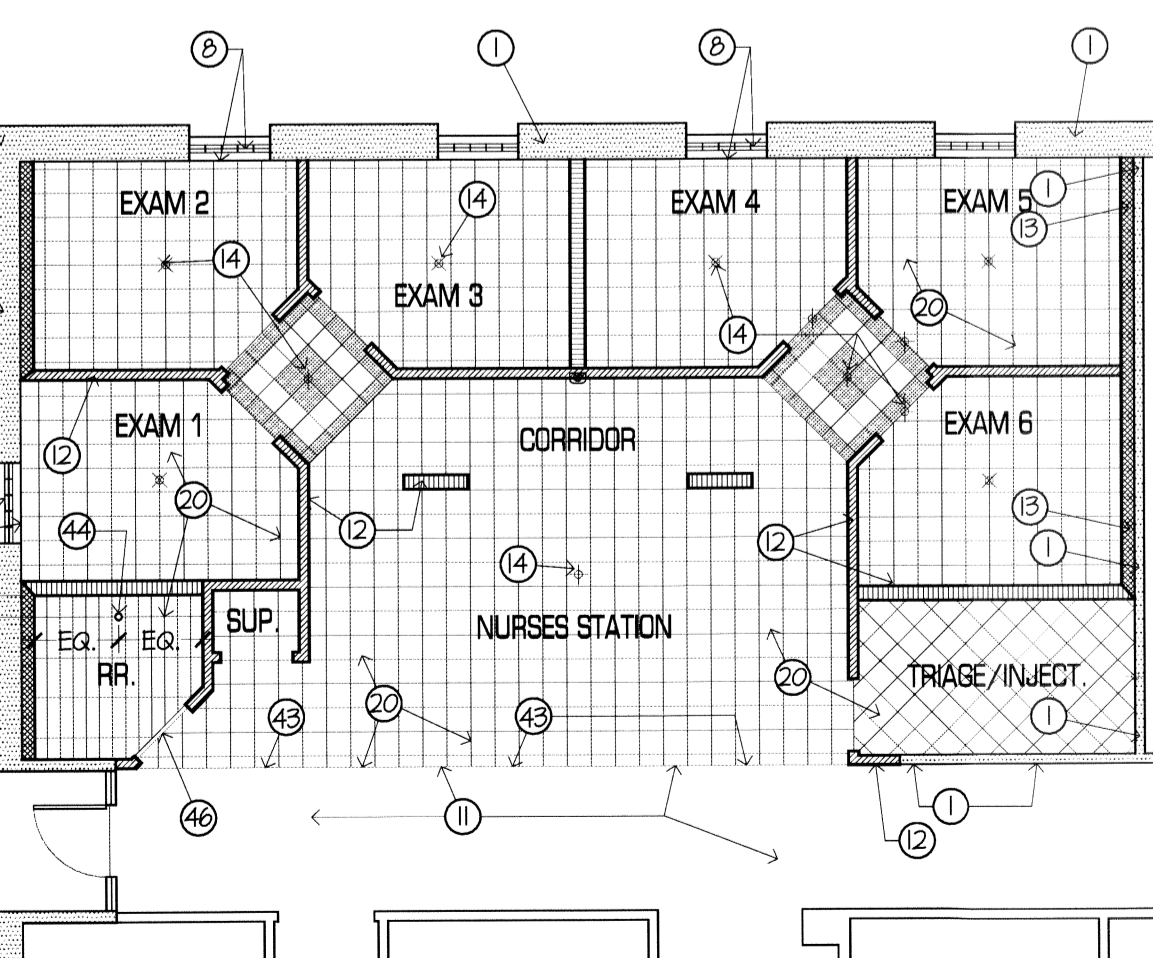
2 ENL. DEMO./REM. PLAN
scale: 1/8" = 1'-0"
NORTH



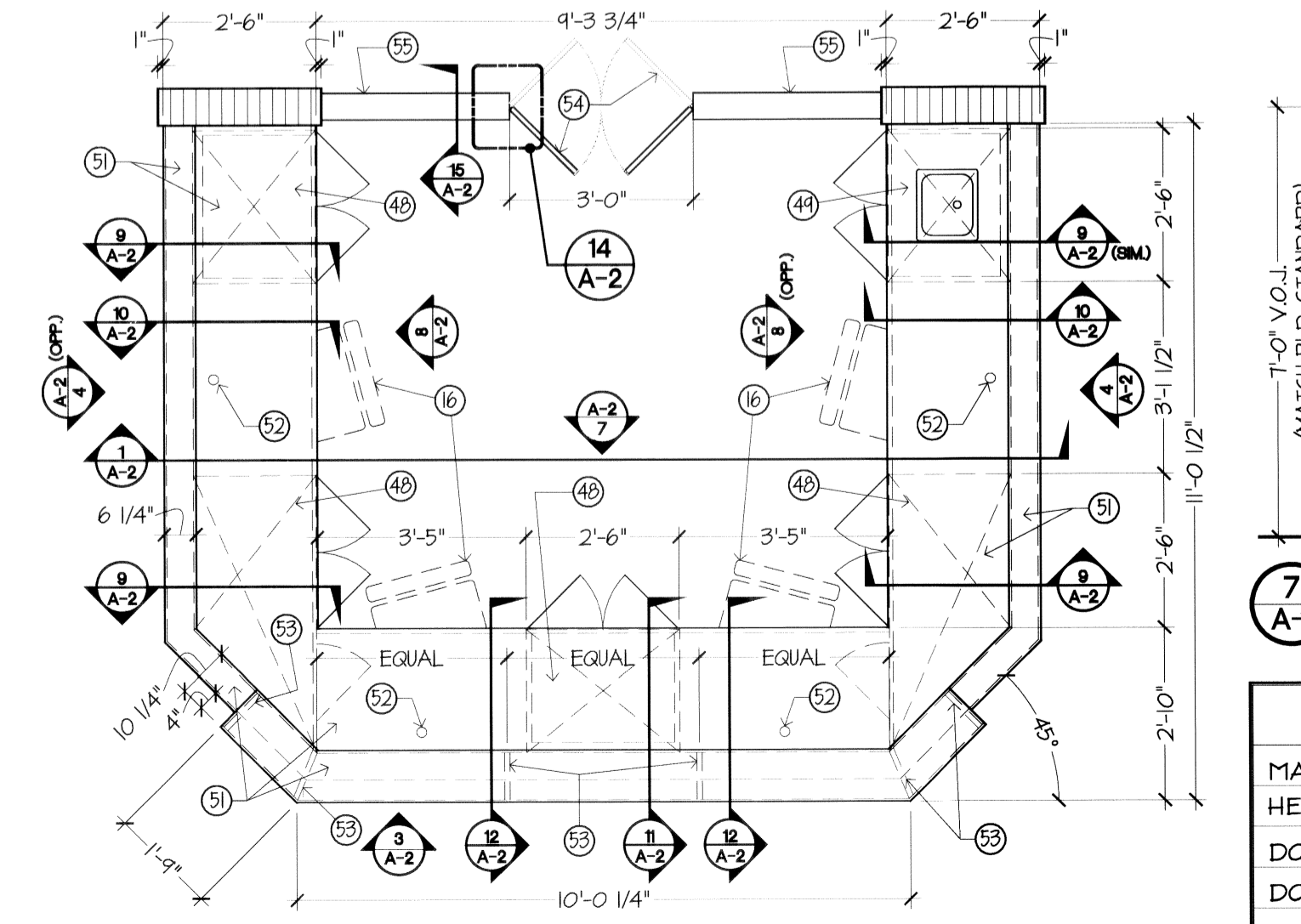
3 ENL. FLOOR PLAN
scale: 1/8" = 1'-0"
NORTH



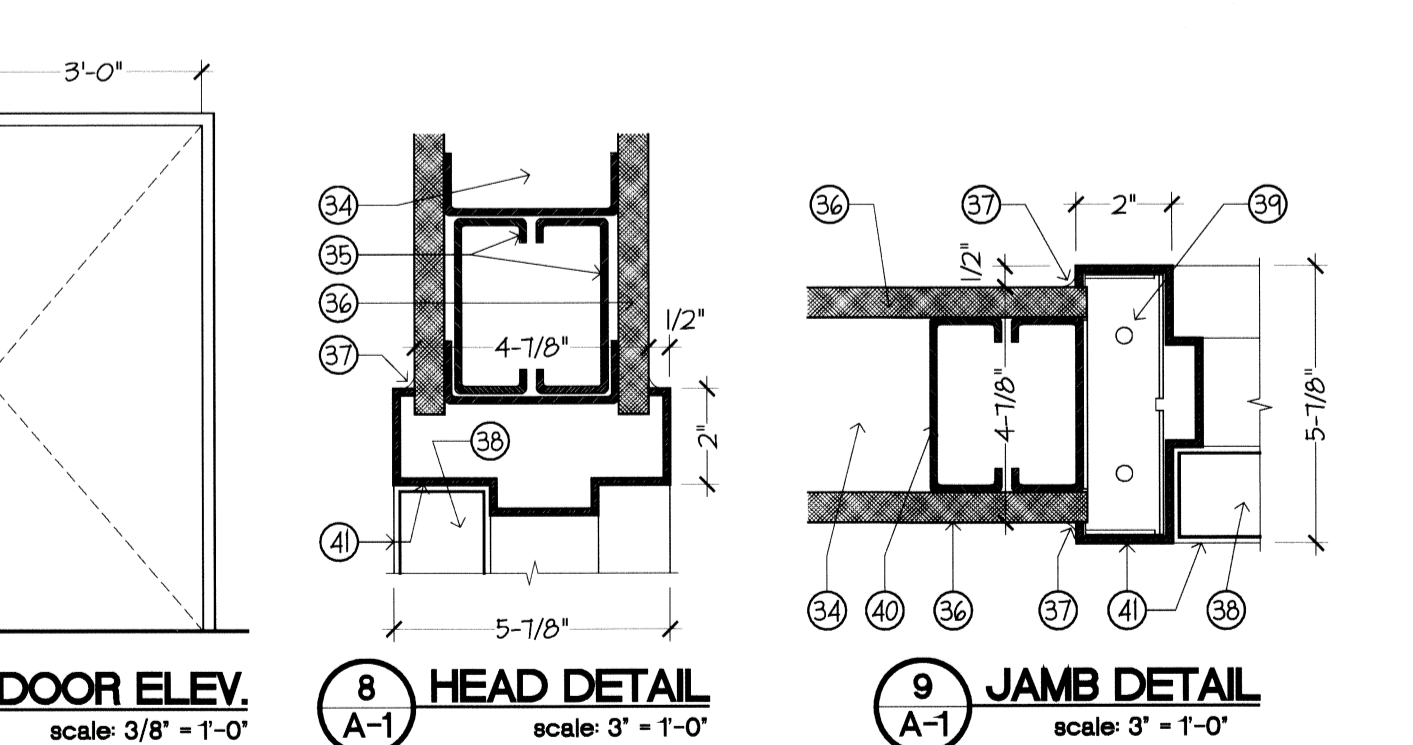
4 ENL. CEILING PLAN
scale: 1/8" = 1'-0"
NORTH



5 FLOOR PATTERN
scale: 1/8" = 1'-0"
NORTH

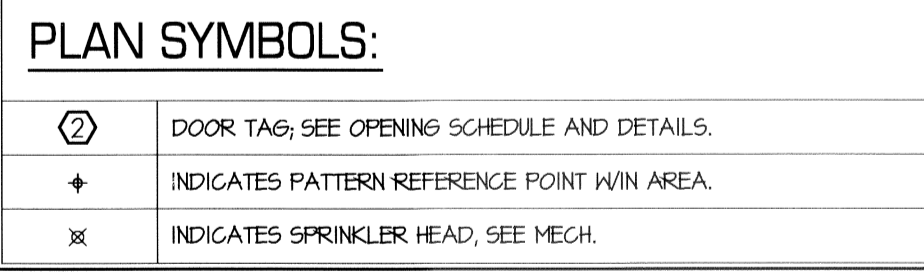
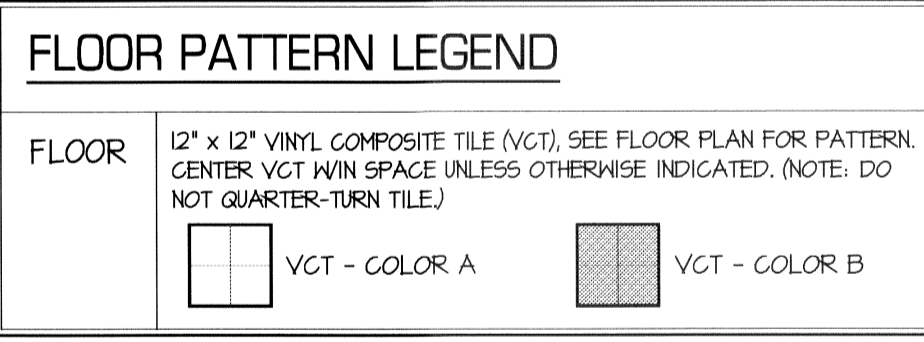


6 ENLARGED NURSES STATION PLAN
scale: 3/8" = 1'-0"
NORTH



DOOR SCHEDULE

MARK	DESCRIPTION	ELEV.	JAMB DET.	FRAME SIZE
1	DOOR	8/A-1	9/A-1	2" x 5-1/2"
2	HEAD DET.	8/A-1	9/A-1	2" x 5-1/2"
3	DOOR SIZE	3'-0" x 7'-0" (V.O.J.)		
4	DOOR DESC.	SOLID CORE WOOD W/ WOOD VENEER FINISH (MATCH EXST. BLDG. STANDARD COLOR, GRAIN, & FINISH)		
5	FRAME DESC.	PAINTED HOLLOW METAL		
6	RMKS.	SEE 14/A-2 FOR NURSES STATION GATE HARDWARE.		



FINISH SCHEDULE

ROOM NAME	FLOOR	BASE	WALL	CLG.	CLG. HT.	GENERAL FINISH NOTES:
CORRIDOR	VCT	6-1/2" x 20" PORC. TILE	4" HIGH CONT. COIL RESILIENT	PAINTED GYPSUM BOARD	9'-6"	1. GRADUALLY SLOPE PORCELAIN TILE TO FLOOR DRAIN. DO NOT "SUMP" AT DRAINS CAUSING MULTIPLE TILE CUTS AT PERIMETER. COORDINATE W/ DRAIN INSTALLATION. 2. PORCELAIN BASE TILE SHALL MATCH FLOOR TILE SERIES. 3. PROVIDE PREFORMED INTERIOR & EXTERIOR CORNERS FOR RESILIENT BASE INSTALLATION. 4. FOR HORIZONTAL F.R.P. EDGES, CLOSELY ABUT ADJACENT SURFACES (I.E. PORCELAIN WALL BASE, GYPSUM CEILING, ETC.) AND NEATLY CAULK JOINTS W/ SEALANT (COLOR TO BE SELECTED BY ARCHITECT). FOR VERTICAL F.R.P. EDGES, INSTALL MANUFACTURER'S COLOR-MATCHED FINISH TRIMS AT VERTICAL JOINTS. ALSO SEE ELEVATIONS ON SHEET A-2.
NURSES STATION	VCT	6-1/2" x 13" PORC. TILE	PAINTED GYPSUM BOARD	F.R.P. ON GYPSUM BOARD, FULL-HEIGHT	9'-6"	
EXAMS 1-6	VCT	6-1/2" x 13" PORC. TILE	PAINTED GYPSUM BOARD	F.R.P. ON GYPSUM BOARD, FULL-HEIGHT	9'-6"	
TRIAGE/INJECTION	VCT	6-1/2" x 13" PORC. TILE	PAINTED GYPSUM BOARD	F.R.P. ON GYPSUM BOARD, FULL-HEIGHT	9'-6"	
RESTROOM	VCT	6-1/2" x 13" PORC. TILE	PAINTED GYPSUM BOARD	F.R.P. ON GYPSUM BOARD, FULL-HEIGHT	9'-6"	
SUPPLY	VCT	6-1/2" x 13" PORC. TILE	PAINTED GYPSUM BOARD	F.R.P. ON GYPSUM BOARD, FULL-HEIGHT	9'-6"	