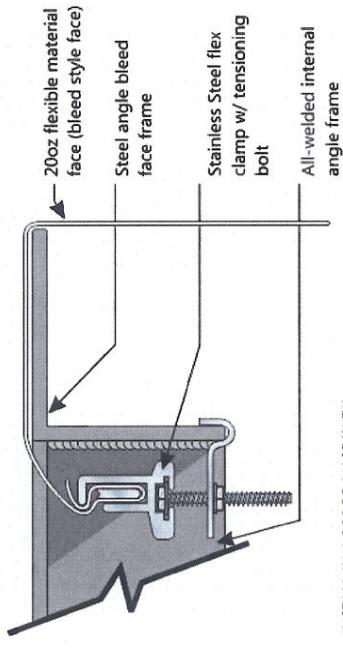




- PRINTED TO MATCH PANTONE 108 C
- PRINTED TO MATCH PANTONE 2597 C
- PRINTED TO MATCH PANTONE TRANS. WHITE



INSTALL IN ACCORDANCE WITH NATIONAL ELECTRICAL CODES

**FLEX FACE FRAME/TENSION DETAIL**

NOT TO SCALE

Mfg. & install (1) single face, internally illuminated flex face cabinet as shown above into designated location shown right in photo...

Sign cabinet is fabricated aluminum w/ a painted PMS 2597 finish. Internal illumination will be w/ fluorescent lamps.

Face is fabricated from flex material w/ printed graphics & UV protective layer as per customers provided artwork file. This face will be a Bleed style flexible face.

Sign cabinet will mount flush to building fascia w/ non-corrosive fasteners as needed.

COLORS REPRESENTED ON THIS PRINT MAY NOT MATCH THE PMS CHIP, VINYL OR PAINT COLORS EXACTLY it is to be viewed as a color representation only.

1490 I-10 Service Rd. • Slidell, LA 70461  
(800)869-3804 • (985)649-3804 • f: (985)643-3758

<b>Client</b> C & G Pharmacy 9311 Jefferson Hwy. River Ridge, LA	<b>Sales Rep.</b> Mike Bocage
<b>Project</b> Building Sign	<b>Date</b> 04/29/2013
	<b>Bid No.</b> 14366

<b>Designer</b> Grant Tingley	<b>120V electrical unless noted otherwise</b>
<b>Drawing No. / Pg No.</b> 041357 B	<b>Approved by:</b>
<b>Scale</b> 3/8" = 1'-0"	<b>Approval date:</b>

- NOTES:
1. STRUCTURAL STEEL WILL BE ASTM-A-36.
  2. STEEL LESS THAN 1/4" THICK WILL BE GALVANIZED.
  3. ALL STRUCTURAL STEEL TO BE PAINTED W/ TWO COATS OF RUST INHIBITING PAINT UNLESS GALVANIZED.
  4. ALL CONNECTIONS WILL BE 1/2" DIAMETER BOLTS UNLESS NOTED.
  5. PLASTIC SIGN FACES TO BE FORMED OF SLOW BURNING MATERIALS.
  6. COMPLETED SIGN WILL BEAR U.L. LABEL.
  7. SIGN WILL BE LOCATED A MINIMUM OF 6" FROM BACK OF CURB.
  8. BOTTOM OF SIGN WILL BE LOCATED A MINIMUM OF 9' ABOVE GRADE.
  9. SIGN WILL BE FABRICATED AND INSTALLED TO WITHSTAND A MINIMUM WINDLOAD OF 130 M.P.H. @ 3 SEC. GUSTS IN ACCORDANCE W/ 2009 I.B.C.

THESE PLANS AND SPECIFICATIONS HAVE BEEN PREPARED BY ME &/OR UNDER MY SUPERVISION, TO THE BEST OF MY KNOWLEDGE AND BELIEF THEY CONFORM TO ALL CITY REQUIREMENTS. I AM NOT GENERALLY ADMINISTERING THE WORK.

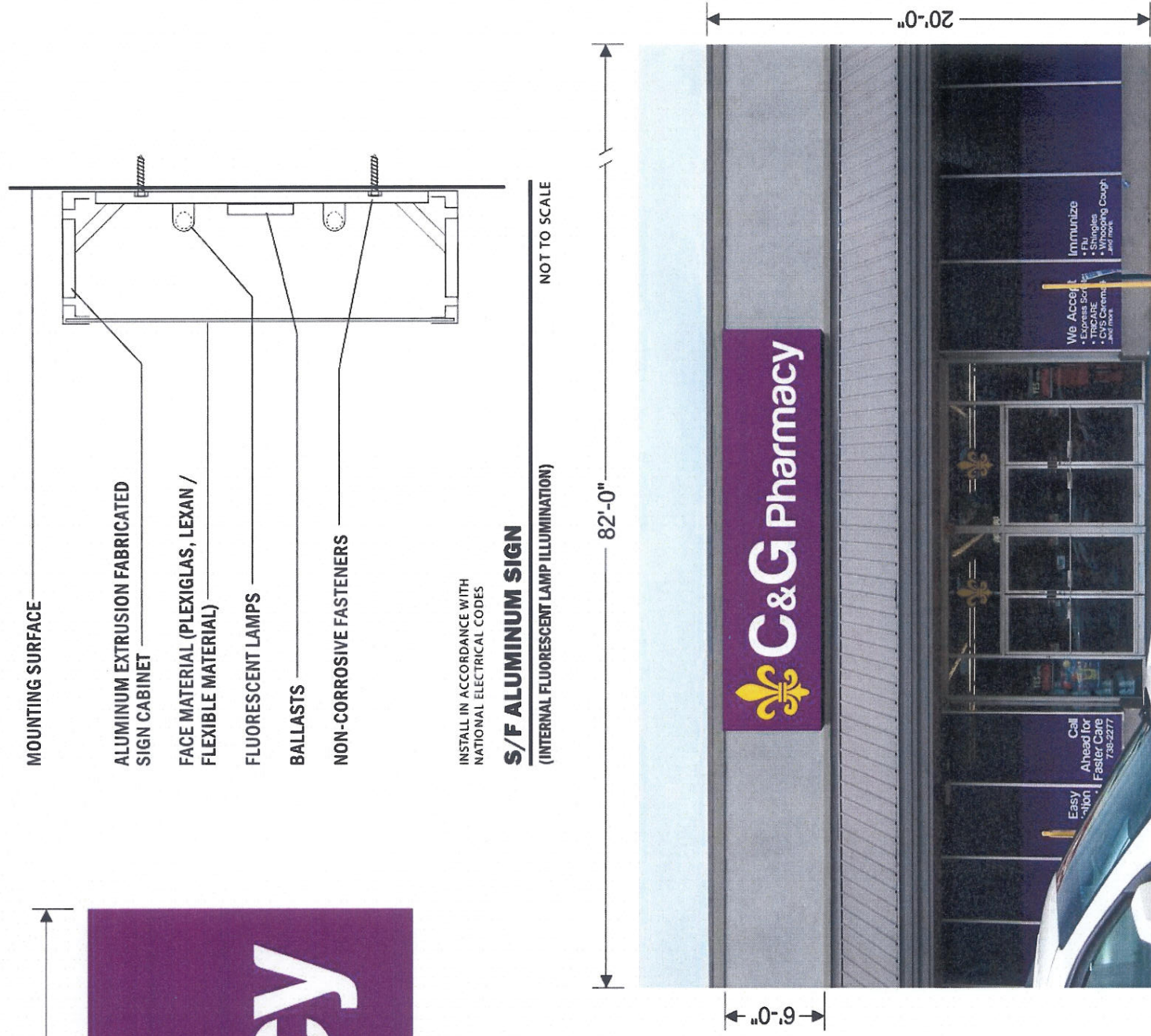


photo not to page scale

Property of Sign Lite Inc. - Do Not Duplicate. This concept and artwork is the exclusive property of Sign Lite Inc., and is for the sole purpose of viewing by recipient. If no contact is initiated with Sign Lite Inc., this concept and artwork is to be returned in full. Any duplication and/or copying of these drawings in part or whole is prohibited. Any violation of these terms will result in penalties and prosecution under current copyright laws and/or be subject to full reimbursement of any and all associated design and production fees.