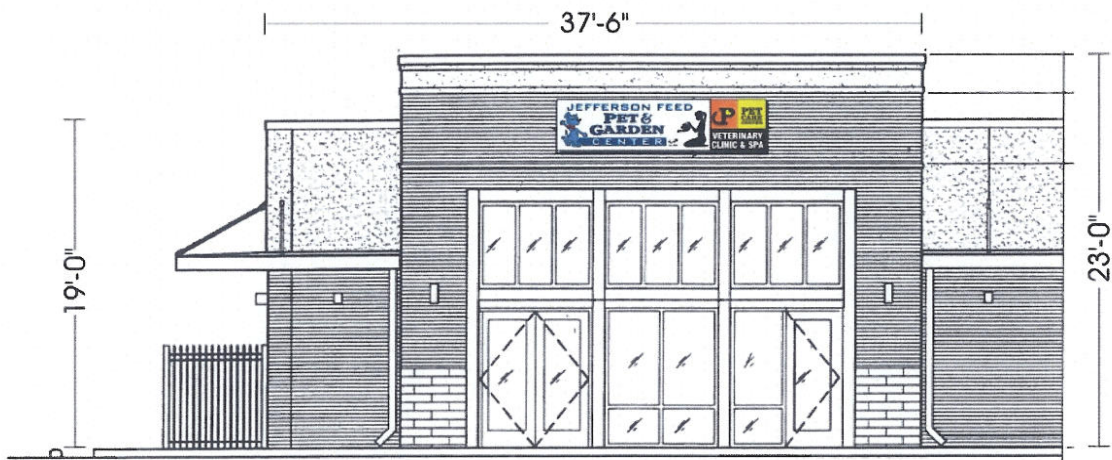


1 1/2"



36 SQ.FT.



Scale: 3/32" = 1'-0"

LL

LAG BOLT
" O.C.

(PANSION
4'-0" O.C.

resentation only.

Designer
Glenn Dieterich

Drawing No. / Pg No.
041349 AR Permit

Scale
As Indicated

120v electrical unless noted otherwise

Approved by:

Approval date:

NOTES:

1. STRUCTURAL STEEL WILL BE ASTM A36
2. STEEL LESS THAN 1/4" THICK WILL BE GALVANIZED.
3. ALL STRUCTURAL STEEL TO BE PAINTED W/ TWO COATS OF RUST INHIBITING PAINT UNLESS GALVANIZED.
4. ALL CONNECTIONS WILL BE 1/2" DIAMETER BOLTS UNLESS NOTED.
5. PLASTIC SIGN FACES TO BE FORMED OF SLOW BURNING MATERIALS.
6. COMPLETED SIGN WILL BEAR U.L. LABEL
7. SIGN WILL BE LOCATED A MINIMUM OF 6" FROM BACK OF CURB
8. BOTTOM OF SIGN WILL BE LOCATED A MINIMUM OF 9' ABOVE GRADE.
9. SIGN WILL BE FABRICATED AND INSTALLED TO WITH-STAND A MINIMUM WINDLOAD OF 130 M.P.H. @ 3 SEC. GUSTS IN ACCORDANCE W/ 2009 I.B.C.

THESE PLANS AND SPECIFICATIONS HAVE BEEN PREPARED BY ME &/OR UNDER MY SUPERVISION, TO THE BEST OF MY KNOWLEDGE AND BELIEF THEY CONFORM TO ALL CITY REQUIREMENTS. I AM NOT GENERALLY ADMINISTERING THE WORK.