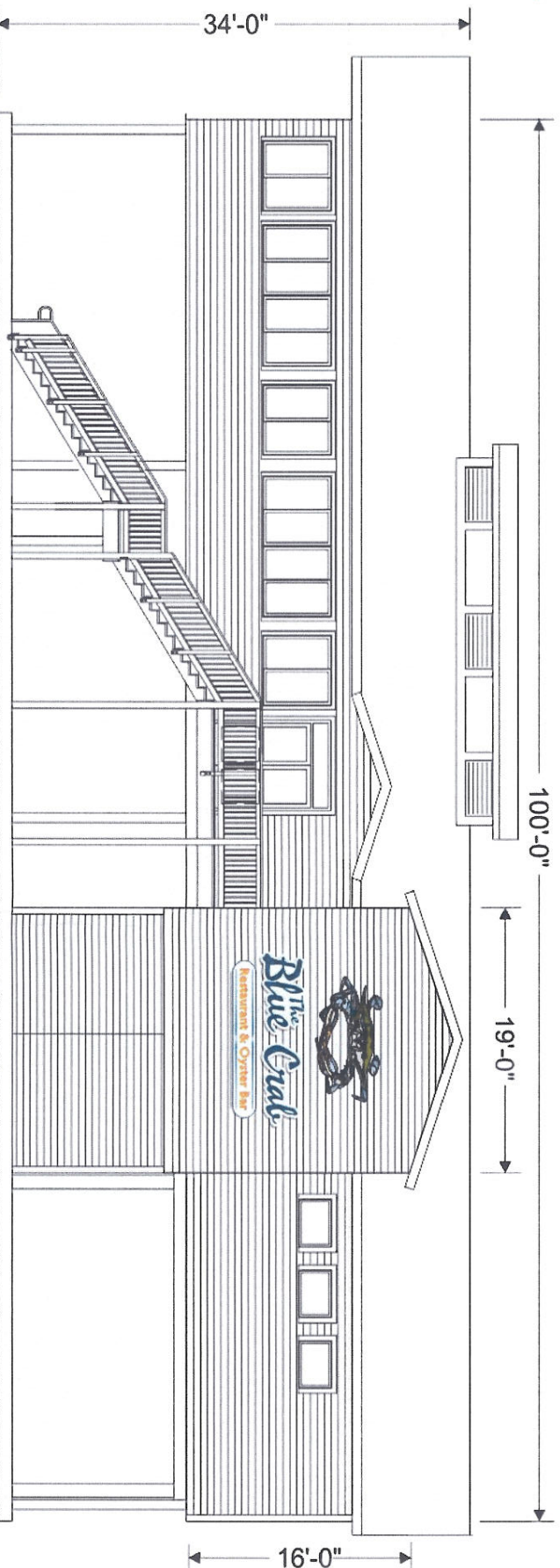


**Total Signage = 112 sq.ft.**



Mfg & install (1) exposed neon wall sign, (1) set of reverse lit ltrs, (1) common channel as shown left into customer designated area....

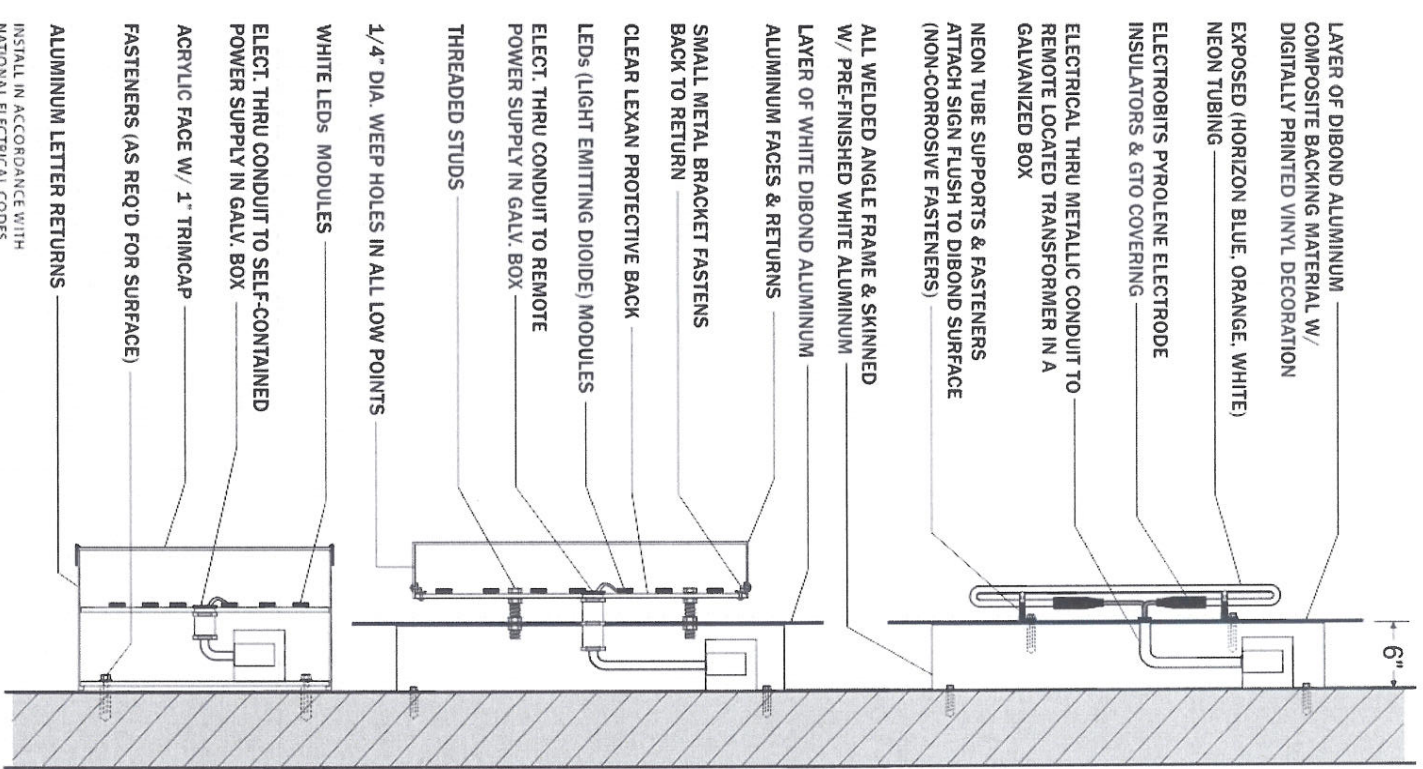
Neon wall sign is fabricated from one layer of Dibond aluminum composite material w/ digitally printed vinyl & UV clear protective overlay. Dibond will mount onto a all welded angle frame & skinned w/ pre-finished White aluminum.

Sign is illuminated w/ single tube Horizon Blue, Orange & White neon. Neon transformers will be located with-in the skinned frame.

Reverse lit letters will be aluminum fabricated reverse channels w/ painted Blue finish to match the customers provided artwork. Letters are backlit w/ White LEDs for a halo glow at night & have clear lexan protective backs. These letters are pin mounted off of one layer of White Dibond aluminum composite material, Dibond will have an all welded angle frame & skinned w/ pre-finished White aluminum.

Common channel is White alum. fabricated & internally illuminated w/ White LEDs. A White acrylic face will be used w/ 3M Trans. vinyl decoration. 1" White trimcap will be used on this face.

All signage is flush mounted to HardiePlank siding w/ angles & fasteners as needed.



**EXPOSED NEON, REVERSE LIT LETTERS COMMON CHANNEL**  
(SELF-CONTAINED POWER SUPPLIES)  
**NOT TO SCALE**

COLORS REPRESENTED ON THIS PRINT MAY NOT MATCH THE PMS CHIP, VINYL OR PAINT COLORS EXACTLY it is to be viewed as a color representation only.



**SIGN LITE**  
Lighting the way to success!

1490 I-10 Service Rd. • Slidell, LA 70461  
(800)869-3804 • (985)649-3804 • f:(985)643-3758

**Client**  
The Blue Crab  
7842 Lakeshore Dr.  
New Orleans, LA

**Sales Rep.**  
Mike Bocage

**Date**  
06/24/2013

**Bid No.**  
14526

**Designer**  
Grant Tingley

**Drawing No. / Pg No.**  
061335 Permit

**Scale**  
1/4" = 1'-0"

**120V electrical unless noted otherwise**

Approved by:

Approval date:

**NOTES:**

1. STRUCTURAL STEEL WILL BE ASTM-A-36.
2. STEEL LESS THAN 1/4" THICK WILL BE GALVANIZED.
3. ALL STRUCTURAL STEEL TO BE PAINTED W/ TWO COATS OF RUST INHIBITING PAINT UNLESS GALVANIZED.
4. ALL CONNECTIONS WILL BE 1/2" DIAMETER BOLTS UNLESS NOTED.
5. PLASTIC SIGN FACES TO BE FORMED OF SLOW BURNING MATERIALS.
6. COMPLETED SIGN WILL BEAR U.L.L. LABEL.
7. SIGN WILL BE LOCATED A MINIMUM OF 6" FROM BACK OF CURB.
8. BOTTOM OF SIGN WILL BE LOCATED A MINIMUM OF 9" ABOVE GRADE.
9. SIGN WILL BE FABRICATED AND INSTALLED TO WITH STAND A MINIMUM WINDLOAD OF 130 M.P.H. @ 3 SEC. GUSTS IN ACCORDANCE W/ 2009 I.B.C.

THESE PLANS AND SPECIFICATIONS HAVE BEEN PREPARED BY ME &/OR UNDER MY SUPERVISION. TO THE BEST OF MY KNOWLEDGE AND BELIEF THEY CONFORM TO ALL CITY REQUIREMENTS. I AM NOT GENERALLY ADMINISTERING THE WORK.