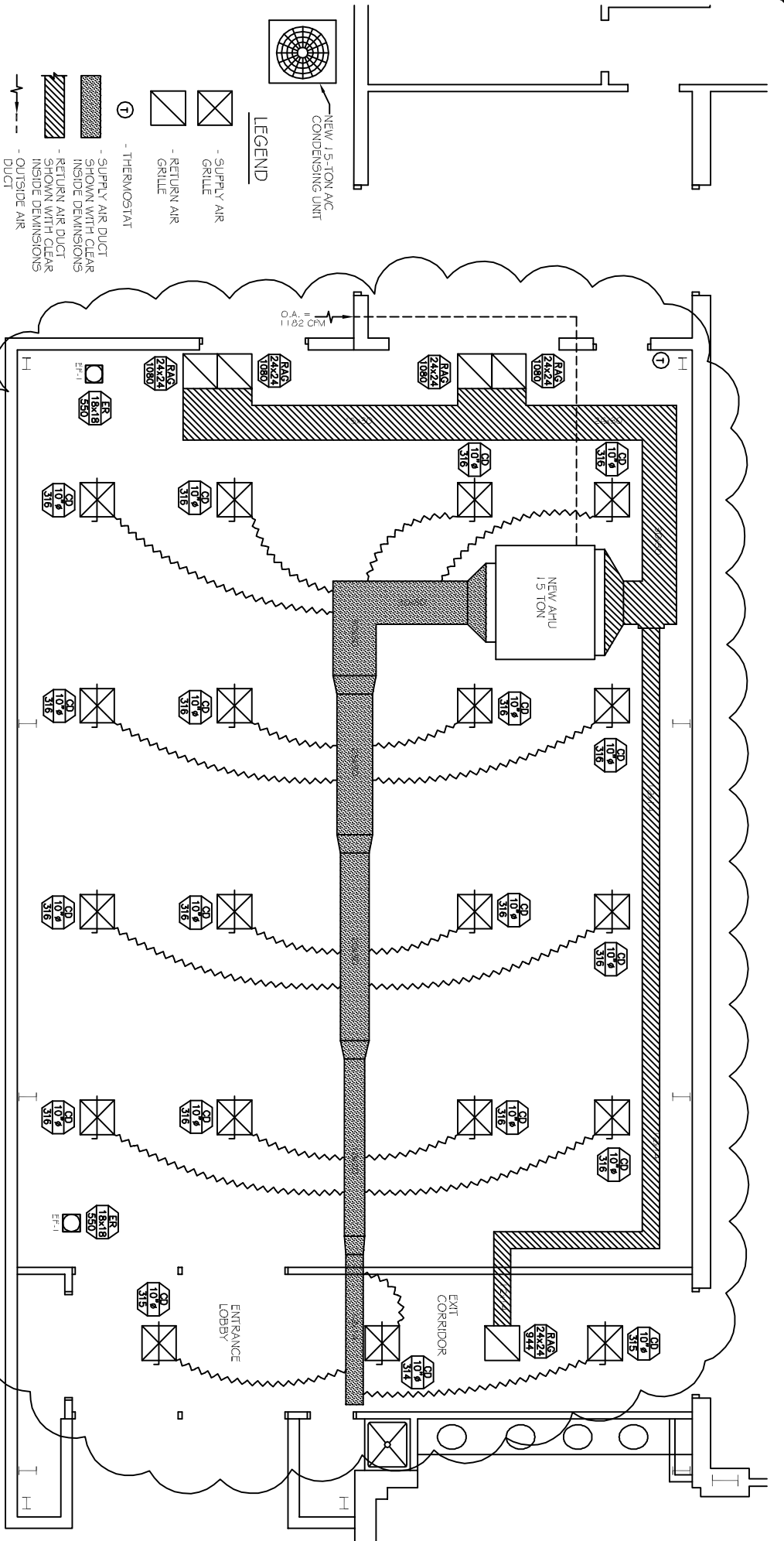


MECHANICAL NOTES

- CONTRACTOR SHALL VERIFY THAT ALL EQUIPMENT, AS SHOWN ON THESE DRAWINGS, WILL NOT CONFLICT WITH ANY DRAINING, SCOTTLIES, JOISTS, ETC.
- ALL ROOF-MOUNTED EQUIPMENT AND PENETRATIONS SHALL BE FLASHED A MINIMUM OF 12" ABOVE THE ROOF-VA ROOF CURBS AND PRE-SEALS. PROVIDE Airtite SUPPLY OF PRE-SEALS FOR ELECTRICAL PENETRATIONS.
- ALL OUTSIDE AIR INTAKES SHALL BE A MINIMUM OF 10' OF ROOF ANY EXHAUST FAN OR HANDLING UNIT. PRESS AIR SHUTTERS SHALL BE INSTALLED IN ROOF EXHAUST FAN DUCTS SUPPLIED WITH A CONTROL BACKER TO SHUT DOWN SYSTEM IS NOT RUNNING.
- Mechanical systems shown on these drawings are shown. BACKLASHING CONTRACTOR TO VERIFY WITH OWNER LOCATIONS OF VENTS, DAMPERS, REGISTERES, ETC. REFER TO SEPARATE ENGINEERING PLAN FOR FINAL GRILLE AND DIFFUSER LOCATIONS AND COORDINATE AS REQUIRED.
- REFER TO STRUCTURAL DRAWINGS TO COORDINATE LOCATIONS & MOUNTING OF MECHANICAL EQUIPMENT.
- THE MECHANICAL CONTRACTOR SHALL BE RESPONSIBLE FOR ADJUSTING ALL WORKMANSHIP ON EQUIPMENT WHICH WILL BE THERE. FURNISH BY THE CONTRACTOR. REFER TO THESE DRAWINGS FOR DETAILS AS NOTED.
- CONDENSATE & OVERFLOW DRAIN LINES SHALL BE PVC 3/4" AND SHALL BE INSTALLED COMPLETELY SEPARATE. DRAINING TO BE RUN TO FLOW VESSEL WITHIN THE FEET OF AIR HANDLING UNIT.
- PROVIDE VIBRATION ISOLATION DEVICES AND FLEXIBLE CONNECTIONS TO ALL MOVING MACHINERY.
- DUCTWORK TO BE GALVANIZED SHEET METAL PER SWAGA STANDARDS. LINE WITH NEOPRENE COATED 1/2" 1.5 POUNDS PER CUBIC FOOT DUCT INSULATION.
- ROUND FLEXIBLE DUCT TO BE UL-181, CLASS I, AIR DUCT MATERIALS AND BE INSULATED WITH A MINIMUM R-VALUE OF 6.
- ALL DUCT DIMENSIONS SHOWN ON DRAWINGS ARE CLEAR INSIDE DIMENSIONS. DUCTS SHALL BE SIZED TO UNIT MAIN DUCTS TO 1000 FPM & SECONDARY DUCTS TO 800 FPM.
- ALL SUPPLY AIR VENTS SHALL BE EQUIPPED WITH AIR CONTROL DAMPERS.
- THE CONTRACTOR SHALL PROVIDE COMPLETE INFORMATION AND COOPERATION TO THE OTHER CONTRACTORS AND TRADES AS REQUIRED FOR COORDINATION AND COORDINATION OF THE COMPLETE PROJECT.
- THIS CONTRACTOR SHALL COORDINATE WITH THE GENERAL CONTRACTOR AND ALL OTHER TRADES FOR ALL REQUIRED OPENINGS IN FOUNDATIONS, FLOORS, WALLS AND ROOF. CUTTING AND PATCHING SHALL BE FIELD TO A MINIMUM.
- TEMP SENSORS SHALL BE LOCATED GENERALLY AS SHOWN BUT THEIR EXACT LOCATION SHALL BE FIELD TO A MINIMUM. ALL THERMOSTATS SHALL BE AUTOMATIC CHANGEOVER WITH FLEX SMOKE PANEL.
- ALL AIR HANDLING SYSTEMS TO BE BALANCED TO ASSURE PROPER AIR FLOWS PER PANS.
- CONTRACTOR TO INSULATE PACKAGED OF ALL DIFFUSERS WITH 2" MINIMUM OWENS-CORNING FIBERGLASS ALL SERVICE PACKED DUCT WORK.
- CONTRACTOR TO FABRICATE ALL DUCTWORK TRANSITIONS AS REQUIRED TO ATTACH DUCTWORK TO HVAC EQUIPMENT AND AIR DEVICES.
- ALL ROUND DUCT AND FLEX DUCT RUN OUTS SHALL BE THE SAME DIAMETER AS DIFFUSER NECK UNLESS NOTED OTHERWISE.
- PROVIDE RECTANGULAR TO ROUND TRANSITIONS FOR ALL DIFFUSERS AS NEEDED.
- VERIFY EXISTING CONDITIONS IN FIELD PRIOR TO BEGINNING WORK.
- PROVIDE AND INSTALL WATER PROOF GRILLE VENT IN PROPER ROOF LOCATION FOR HANDLING PROTECT DRYOUT.
- COORDINATE CEILING AIR DEVICE LOCATIONS WITH LIGHTING PLAN AND ARCHITECT'S REFLECTED CEILING PLAN.
- RETURN DUCTWORK SHALL BE LINED WITH 1" INCH ACROLYLIC INSULATION.
- IN ALL SYSTEMS OVER 2,000 CFM AND LESS THAN 15,000 CFM, SMOKE DETECTORS SHALL BE INSTALLED IN ACCORDANCE WITH NFPA 90A. IN THE SUPPLY DUCT DOWNSTREAM OF THE AIR HANDLING UNIT AND ALL INTAKES TO AUTOMATICALLY STOP THE FAN. IN ALL SYSTEMS UNDER 2,000 CFM PROVIDE UL LISTED 125 F FIRE-OUT IN RETURN AIR OF EACH SYSTEM TO SHUT DOWN FAN IN THE EVENT OF FIRE.
- PROVIDE AND INSTALL SMOKE DETECTORS AS APPROVED BY LOCAL A.U./J.S. PLACE NEAR RA AND SA OPENINGS OF AHU AND PROVIDE WITH ACCESS PANEL. WIRING BY ELECTRICAL CONTRACTOR.
- PROVIDE UL RATED FIRE DAMPERS WHERE REQUIRED AT ALL DUCT PENETRATIONS OF FIRE RATED ASSEMBLIES AND WHERE REQUIRED BY CODE, INCLUDING OUTSIDE AIR INTAKES.
- PROVIDE AND INSTALL WATER PROOF GRILLE VENT ON ROOF FOR TOILET EXHAUST.
- REFERENT LINES SHALL BE SIZED BY UNIT MANUFACTURER AND INSTALLED ACCORDING TO MANUFACTURERS INSTALLATIONS.
- INSTALL FIRE DAMPER WHERE S.A. AND R.A. DUCTS PENETRATE 1" R.C. CONSTRUCTION.
- ALL ELECTRICAL, MECHANICAL AND PLUMBING PENETRATING FIRE PARTITIONS SHALL BE FIRE CAULKED. PENETRATIONS THROUGH RATED CONSTRUCTION SHALL BE SEALED WITH A MATERIAL CAPABLE OF PREVENTING THE PASSAGE OF FLAMES AND TO GASES WHEN TESTED IN ACCORDANCE WITH ASTM E-814.

MECHANICAL PLAN

SCALE: 1/4"=1'-0"



AIR DEVICE SCHEDULE

MARK	DESCRIPTION	BASES OF DESIGN	REMARKS
CD	CEILING DIFFUSER	ROUND STEEL 3" FOR 24"x24" UN-4A MODEL, C-1 WHITE FINISH, ALL NUMBERS CORRECT	
SR	EXHAUST RESISTOR	ROUND STEEL 1" FOR SURFACE MOUNT, C-1 WHITE FINISH, ALL NUMBERS CORRECT, SIZE AND CHG AS INDICATED.	
GR	GRILLE	ROUND STEEL 3" FOR 24"x24" UN-4A MODEL, C-1 WHITE FINISH, ALL NUMBERS CORRECT	

1) TYPICAL PARTS FOR CEILING DIFFUSERS AND DAMPERS OTHER THAN INDICATED
 2) PROVIDE PLASTER SPARKS FOR UN-4A DEVICES IN C-1 ROOFING COURSE
 3) PROVIDE GUTTER FOR ALL EXHAUST RESISTORS AND RETURN AIR GRILLES

AHU UNIT SCHEDULE

TOTAL	CFM	O.A.	TRAIL	MECHANICAL	GRF	REMARKS
TOTAL	120,000 BTD (15 TON)	6,000	1,192	23,000/30	0.15	NOTE: ALL A.C. TO BE SEPT SYSTEM. FVAC FRAME OR EQUAL THIS SYSTEM REQUIRED TO CONTROL 2 RY/VALVE PANS.
NEW AC #1						

FAN SCHEDULE

MARK	AREA SERVED	CFM	1/2" P. MOTOR DATA	CONTROLLED BY	BASIS OF DESIGN	REMARKS
F#-1	AUDITORIUM	600	1/10 1550 200/160	AHU	ASCE FAN CO	

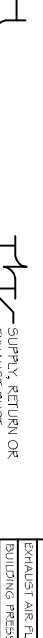
1) PROVIDE FACTORY WATERTIGHT ROOF CURBS, BACKUP DAMPERS, BIRDSCREENS AND SOLID STATE SPEED CONTROLLERS WITH THESE FANS.
 2) INSURE ROOF CURBS ARE FOR USE WITH THE ROOF DRAIN PROVIDED.
 3) FURNISH FAN AND CURB BY MECHANICAL CONTRACTOR

AIR BALANCE SCHEDULE

MARK	CFM	1/2" P. MOTOR DATA	CONTROLLED BY	BASIS OF DESIGN	REMARKS
OUTSIDE AIR FLOW (CFM)	1,192				
RETURN AIR FLOW (CFM)	481.8				
SUPPLY AIR FLOW (CFM)	6,000				
EXHAUST AIR FLOW (CFM)	550				
BUILDING PRESSURE (CH)	1,192				
QUANTITIES	2				
TOTAL PRESSURIZATIONS	1,192				
RESULTING BUILDING PRESSURIZATION (CH)	+82				

TYPICAL HORIZONTAL AHU DETAIL

SCALE: N.T.S.



CONDENSING MOUNTING DETAIL

N.T.S.



DUCT SPLITTER DETAIL

N.T.S.



SUPPLY DUCT TAKE-OFF DETAIL

N.T.S.



SQUARE ELBOW DETAIL

N.T.S.

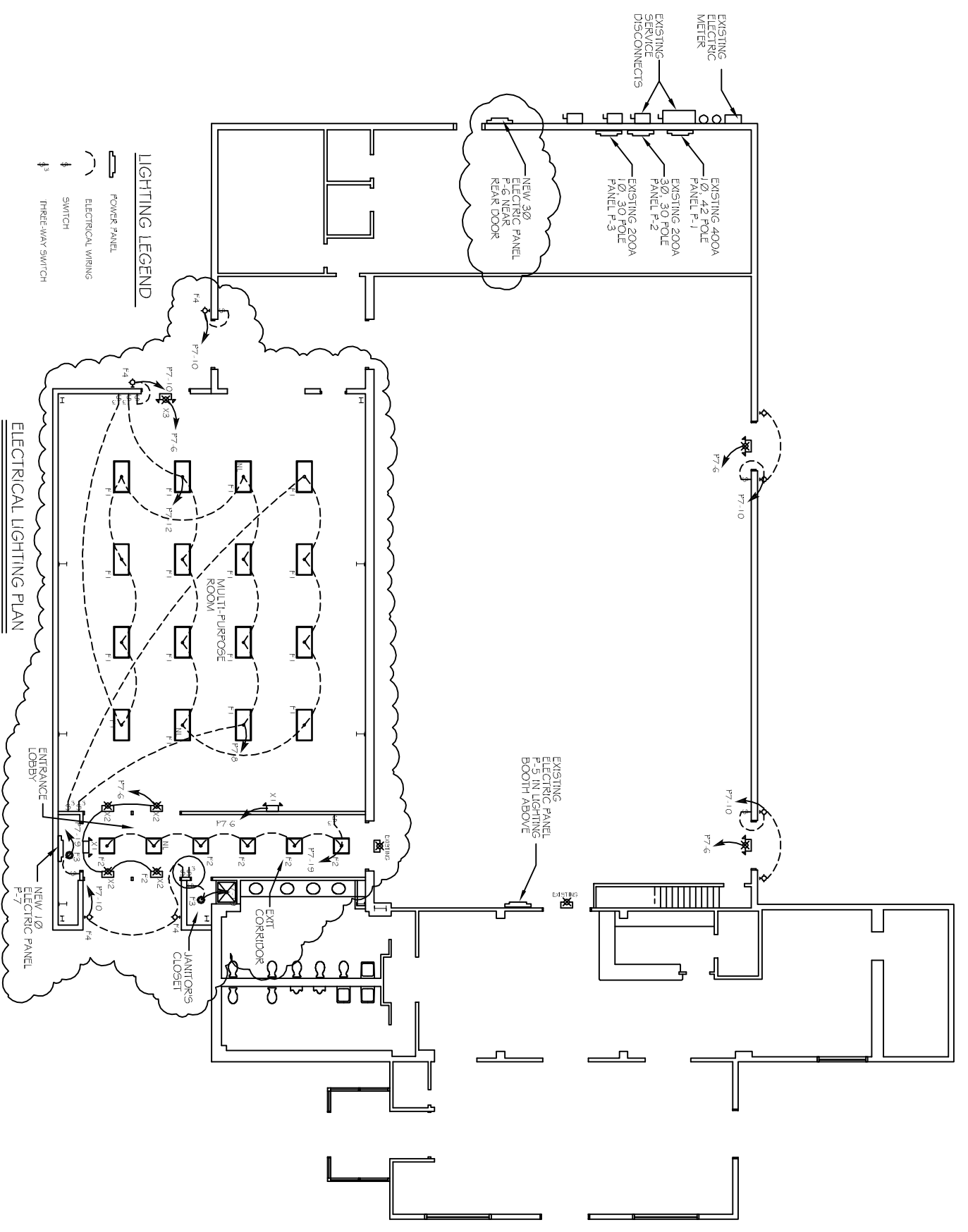
REVISIONS
9/22/14
JUL

These documents are and shall remain the property of the architect and shall not be reproduced, copied, or otherwise used without the written consent of the architect's seal or stamp from these documents unless otherwise provided by written approval of the architect, as per Chapter 3, 1983 and such persons shall be subject to the penalties thereof and imprisonment as stated by Louisiana Law.

FRANK E. GERARVE, JR., ARCHITECT, L.L.C.
 A Professional Architectural Limited Liability Company
 Designers Planners Engineers
 9108 CHRETIEN POINT PLACE, RIVER RIDGE, LOUISIANA 70123
 Telephone: (504) 737-2822 Facsimile: (504) 737-2822

Slidell Little Theatre
 2024 Nellie Drive
 Slidell, Louisiana 70458

DAMMON ENGINEERING INC.
 Architects & Engineers
 Chief Architect: Kevin J. Kinnison, M.A.S.C.E.
 Chief Engineer: Brian Astich, PE
 524 Old Spanish Trail, Slidell, LA 70458
 www.dammonengineering.com
 dammoneng@slidell.net
 PH: 985.543.5831
 FX: 985.541.2993



ELECTRICAL LIGHTING PLAN
SCALE: 1/8"=1'-0"

MARK	DESCRIPTION	MOUNTING MANUFACTURER	SERIES OR TYPE	VOLT	LAMP(S)
F-1	2x4 TROFFER	LITHONIA	ZPRA3N G B 3 32 24 LD MVOUL	120	THREE (3) T8 35W FLUORESCENT
F-2	2x2 TROFFER	LITHONIA	ZPRA3N G B 3 17 12 LD MVOUL	120	THREE (3) T8 7W FLUORESCENT
F-3	CAN LIGHT, LED	RECESSED HALO	6 IN. ALUMINUM (C RATED), 10" TALL, AIRTIGHT HOUSING	120	PHILIPS PAR 28, 100W ECG 3000K LED FLOOD LIGHT
F-4	OUTDOOR BLACK WALL LUMEN	HAAPTON BAY	VERIFI-STYLE WITH OWNER	120	75W EQUIVALENT CFL WITH 90MIN BACKUP POWER
X-1	EMERGENCY LIGHTING 2 HEAD	LITHONIA	LITHONIA EUE LED M12, 30MIN BACKUP TOWER	120	COMES WITH UNIT
X-2	EXIT SIGN	LITHONIA	DIR. LED TL M16, 90MIN BACKUP POWER	120	COMES WITH UNIT
X-3	EMERGENCY LIGHTING WITH EXIT SIGN	LITHONIA	LITHONIA ECR LED M16, 30MIN BACKUP TOWER	120	COMES WITH UNIT

-- LIGHT FIXTURES MARKED WITH 'N' SHALL HAVE 1 HOUR BACKUP WIRING TO NON-SWITCHED CIRCUIT.

REVISIONS	BY
9/22/14	JTL

These documents are the property of FRANK E. GERARVE, JR., ARCHITECT, L.L.C. and are intended for the sole use as indicated on these documents. The removal of the architect's seal or stamp from these documents unless otherwise provided by written agreement of the architect and the client is a violation of the Louisiana Revised Statutes of Louisiana, R.S. 37:1201 (Chapter 3, 1983) and such persons shall be subject to the penalties, fines and/or imprisonment as stated by Louisiana Law.

FRANK E. GERARVE, JR., ARCHITECT, L.L.C.
A Professional Architectural Limited Liability Company
Designers Planners Engineers
9108 CHRETIEN POINT PLACE, RIVER RIDGE, LOUISIANA 70123
Telephone: (504) 737-2821 Facsimile: (504) 737-2822

Slidell Little Theatre
2024 Nellie Drive
Slidell, Louisiana 70458

Lighting fixture with:

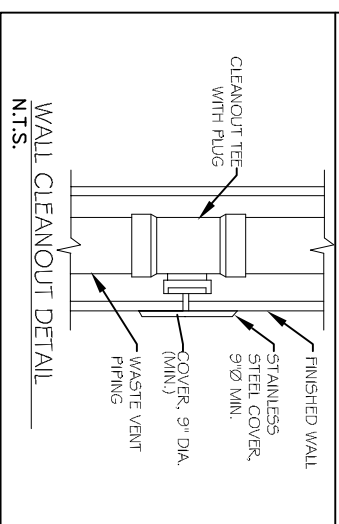
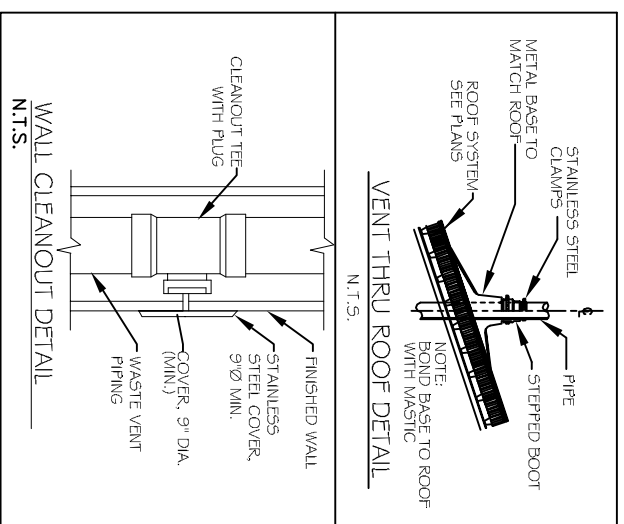
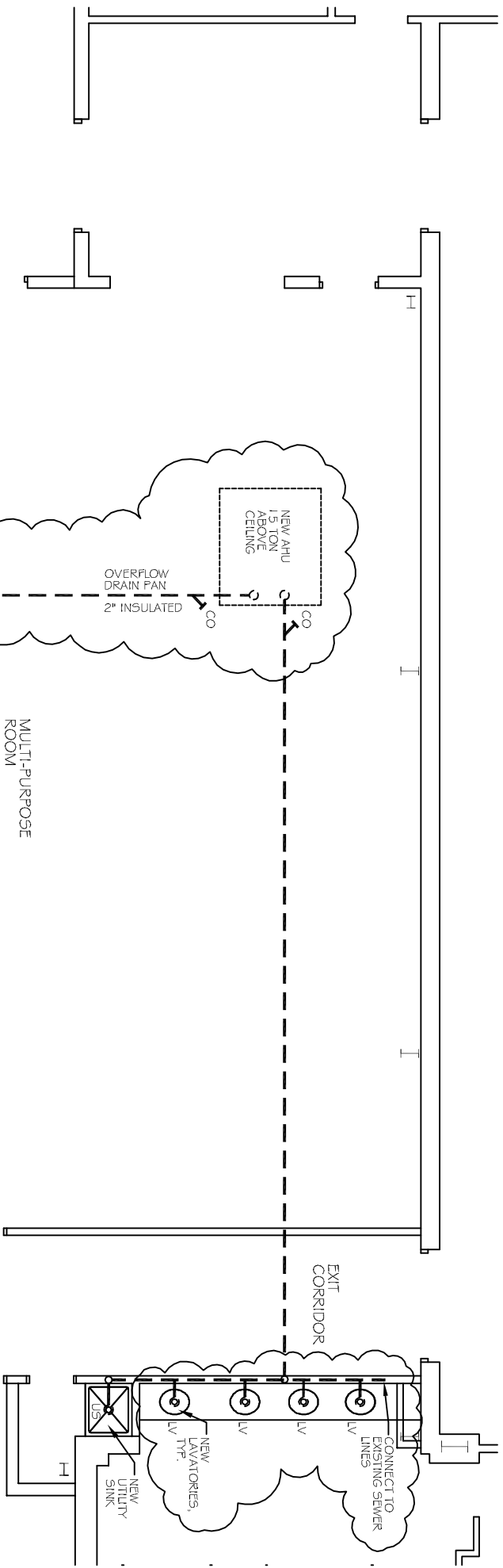
DAMMON
ENGINEERING, INC.
Architects & Engineers

Chief Architect: Kevin J. Kitchin, NCARB
Chief Engineer: Brian Mastick, PE
www.dammonengineering.com
dammoneng@slidelltheatre.com
Slidell, LA 70458 P: 985.641.2990

E-2

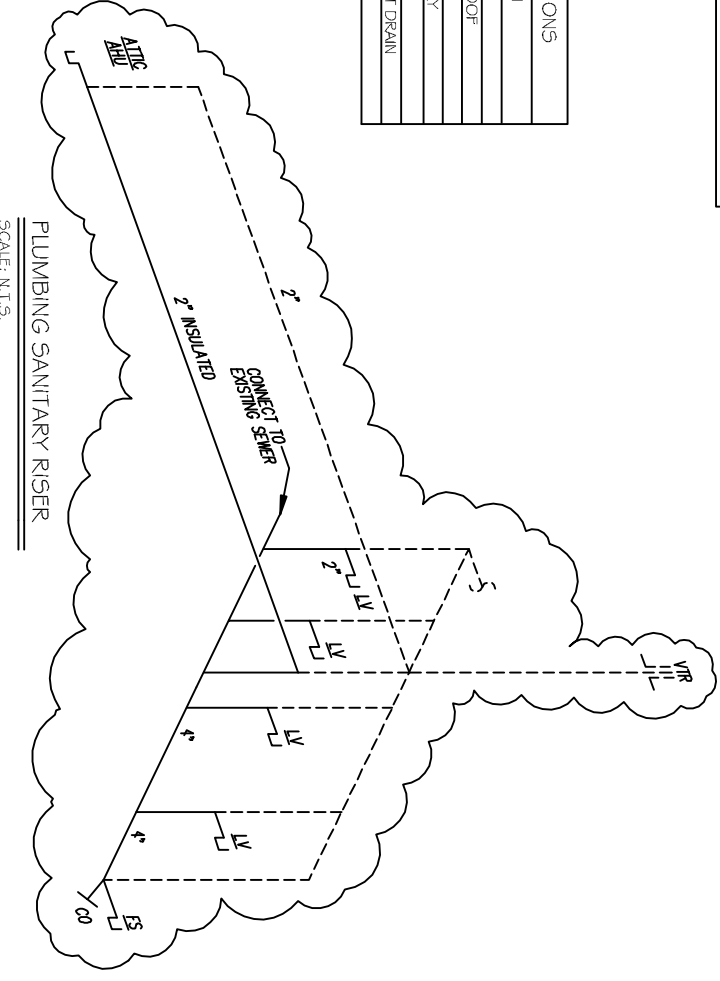
DAMMON L.L.C.
DESIGNED C.K.D.
DATE 9/9/14
SCALE NOTED
JOB NO.

PLUMBING FIXTURE SCHEDULE					
MARK	DESCRIPTION	TYPE	ROUGH-IN-SIZES	NOTES	
LV	LAVATORY	DROP-IN TO MATCH EXISTING	WASTE VENT CW	1/2" 1/2"	
US	UTILITY SINK	FLOOR SINK	2" 1/2"	1/2"	
AHU	AHU DRAIN	-	2" 2"	-	



PLUMBING PLAN
SCALE: 1/4" = 1'-0"

PLUMBING ABBREVIATIONS	
SYM	DESCRIPTION
CO	CLEAN OUT
VTR	VENT THROUGH ROOF
LV	LAVATORY
ELV	EXISTING LAVATORY
US	UTILITY SINK
AHU	AIR HANDLING UNIT DRAIN



PLUMBING SANITARY RISER
SCALE: N.T.S.

PLUMBING GENERAL NOTES

- PLUMBING CONTRACTOR (P.C.) IS TO FINISH AND INSTALL ALL FIXTURES FOR A COMPLETE OPERATING SYSTEM. THE SYSTEM SHALL INCLUDE HOT AND COLD WATER PIPING, SEWER AND VENT PIPING, INSULATION, AND WATER HEATING FIXTURES TO VOLUME.
 - P.C. SHALL PAY ALL NECESSARY FEES FOR UTILITY CONNECTIONS.
 - ALL HANDICAP PLUMBING FIXTURES SHALL BE INSTALLED TO COMPLY WITH STATE AND LOCAL CODES. P.C. SHALL FINISH AND INSTALL CODE COMPLIANT TRAP WAKE ON ALL EXPOSED WATER & WASTE LINES FOR ALL HANDICAP ACCESSIBLE DEVICES.
 - P.C. SHALL VERIFY ALL ELEVATIONS AND SIZES PRIOR TO COMMENCING ANY WORK. PLUMBER TO VERIFY SLAB CONDITIONS (POST TENSION OR CONVENTIONAL) BEFORE COMMENCING WORK. WHERE A RENOVATION IS TO OCCUR, THE PLUMBING CONTRACTOR SHALL VISIT THE SITE TO DETERMINE THE EXTENT OF RENOVATION REQUIRED. PRIOR TO SUBMITTING BID.
 - PLUMBING CONTRACTOR SHALL PROVIDE AS-BUILT DRAWINGS TO THE GENERAL CONTRACTOR PRIOR TO FINAL PAYMENT. THE DRAWINGS SHALL BE IN ACCORDANCE WITH THE DEPARTMENT REQUIREMENTS.
 - THE HOT WATER PRESSURE RELIEF MUST BE CONNECTED DIRECTLY TO THE SANITARY SEWER OR DIRECTLY OUTSIDE.
 - TEST ALL PIPING AT REQUIRED PRESSURE.
 - ALL PLUMBING SHALL BE CLOSELY COORDINATED WITH STRUCTURAL SYSTEM, MECHANICAL SYSTEM AND ELECTRICAL TO INSURE NO TRADES WILL CONFLICT WITH EACH OTHER.
 - ALL WATER MAINS AND PIPING NOT SHOWN FOR CLARITY. ALL LOCATIONS SHALL BE FIELD VERIFIED. ALL PLUMBING LINES SHOWN ARE DIAGNOSTIC.
 - ALL ELECTRICAL, MECHANICAL, PLUMBING PENETRATIONS THROUGH PARTITIONS SHALL BE FIELD CALLED. PENETRATIONS THROUGH RATED CONSTRUCTION SHALL BE SEALED WITH A MATERIAL CAPABLE OF PREVENTING ACCORDANCE WITH ASHRAE-90.1.
- WASTE AND VENT PIPING:**
- PLUMBING CONTRACTOR SHALL USE SERVICE WEIGHT CAST IRON PIPE WITH BELL AND SPOUT ENDS AND ONE PIECE NEOPRENE INSERT TYPE GASKET. USE PVC SCHEDULE 40 OR AEP DRY PIPES AND FITTINGS WHERE INSTALLED BY CODE. ALL PIPING ABOVE GRADE MAY HAVE RUBBER FITTINGS. PLASTIC PIPING SHALL NOT BE USED IN RETURN AIR FLOW. COORDINATE THE REQUIREMENT WITH HVAC CONTRACTOR PRIOR TO BEGINNING WORK.
 - CONTRACTOR SHALL FIELD VERIFY INVERT ELEVATIONS OF ALL EXISTING & NEW SANITARY SEWERS PRIOR TO ROUGH-IN.
 - NEW SEWERAGE LINES 3-INCH AND SMALLER SHALL BE SLOPED 1/4" PER FOOT AND LINES 4-INCH AND LARGER SHALL BE SLOPED 1/8" PER FOOT.
 - ELEVATION OF ALL FLOOR DRAINS SHALL BE HELD 1/2" BELOW FINISH FLOOR TILE.
 - ALL CLEANOUTS SHALL BE INSTALLED FLOOR WITH FINISHED GRADE/FINISHED FLOORS.
 - HOLD ALL PLUMBING VENTS A MINIMUM OF 10'-0" FROM OUTSIDE AIR INTAKES. WHERE STATE OR LOCAL CODES REQUIRE WORK SEPARATION, P.C. SHALL OFFSET TO MEET THE MORE STRINGENT CODE ON HVAC EQUIPMENT. COORDINATE LOCATION WITH H.V.
- WATER PIPING:**
- PORTABLE WATER PIPING AND FITTINGS ABOVE GRADE SHALL BE ASHRAE COPPER MATTERPIPE, TYPE "L". HARD DRAWN WITH COPPER PRESSURE TYPE FITTINGS, ANSI B16.22. THE JOINTS SHALL BE SOLDERED TYPE BING ASHRAE B32. ALLOW GAUGE WELD (60-5) SOLDER. DOMESTIC WATER PIPING BELOW GRADE SHALL BE TYPE "K" SOFT TEMPERED COPPER. NO JOINTS SHALL BE ALLOWED BELOW SLAB.
 - INSTALL 1/2" O.D. RUBBER INSULATION ON ALL HOT AND COLD WATER PIPING ABOVE AND BELOW GRADE. ALL JOINTS IN INSULATION ARE TO BE LAPPED.
 - ALL PLUMBING ABOVE GRADE SHALL BE FIELD VERIFIED. ALL PLUMBING BELOW GRADE SHALL BE FIELD VERIFIED. ALL PLUMBING LINES SHOWN ARE DIAGNOSTIC.
 - ALL PLUMBING HOSE BIBBS OR VALVES WITH THREADED CONNECTIONS SHALL BE PROVIDED WITH VACUUM BREAKERS AND APPROVED VENTS OF BACKFLOW PREVENTION AS REQUIRED BY STATE AND LOCAL CODES.
 - PLUMBING CONTRACTOR SHALL PROVIDE DIELECTRIC ANODES AT ALL PIPING CONNECTIONS WHERE DISSIMILAR PIPING IS JOINED.
 - PROVIDE WATER HAMMER ARRESTORS AND SHUT-OFF VALVES WITH STOP COCKS FOR ALL HOT AND COLD WATER PIPING FIXTURES.
 - ALL HOT AND COLD WATER MAINS AND VENT PIPING TO BE SUPPORTED PER LOCAL PLUMBING CODE.
 - PROVIDE TRIPPERED HOT WATER DEVICES, SET TO 110° F.

In joint venture with:

DAMMON ENGINEERING INC.
Architects & Engineers

Chief Architect: Keith J. Kirshen, NCARB
Chief Engineer: Brian Atchey, PE
504 Old Spanish Trail
Slidell, LA 70458

www.dammonengineering.com
dammoneng@bellsouth.net
PH: 985.543.5831
F: 985.541.5292

DRAMA	9/22/14	JML
CHECKED		
C.K.D.		
DATE	6/6/14	
SCALE	NOTED	
JOB NO.	408	
SHEET	P-1	
SHEETS	4	

Slidell Little Theatre
2024 Nellie Drive
Slidell, Louisiana 70458

FRANK E. GERARVE, JR., ARCHITECT, L.L.C.
A Professional Architectural Limited Liability Company
Designers Planners Engineers

9108 CHRETIEN POINT PLACE, RIVER RIDGE, LOUISIANA 70123
Telephone: (504) 737-2821 Facsimile: (504) 737-2822

These documents are and shall remain the property of the architect and shall not be reproduced, copied, or otherwise used without the written consent of the architect. The removal of these documents or the stamp from these documents without the approval of the architect shall be a violation of the architect's seal or Chapter 3, 1983) and such persons shall be subject to the penalties therefor and or imprisonment as stated by Louisiana Law.

REVISION	BY
9/22/14	JML