

CHAPTER 18 • New

CHAPTER 19 • Existing

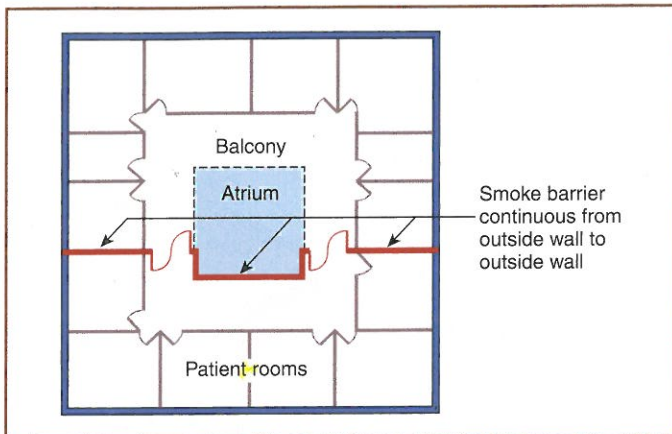


Exhibit 18/19.92 Smoke compartments in atrium building.

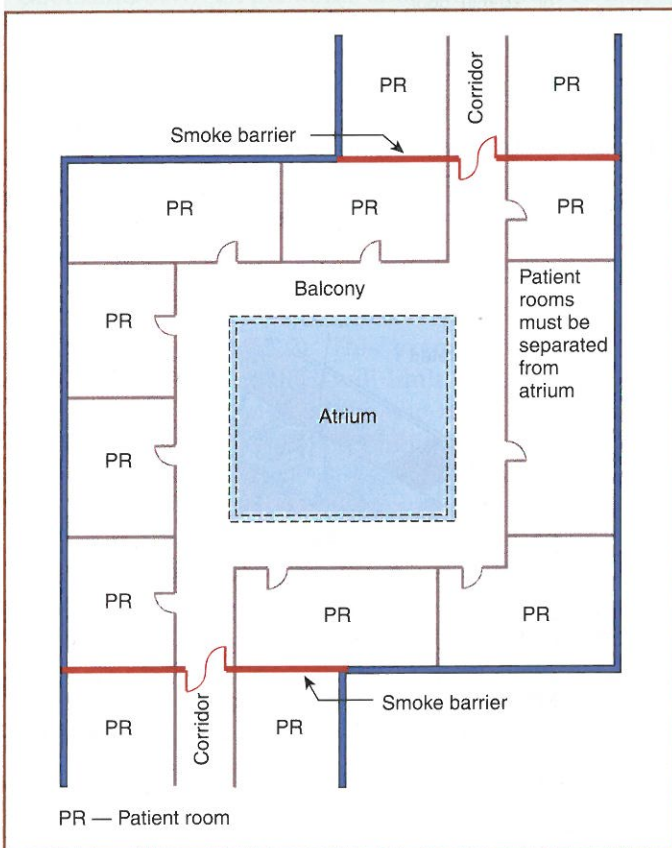


Exhibit 18/19.93 Atrium smoke compartment with unlimited area.

and hugging one edge of the open atrium space. In Exhibit 18/19.93, 18/19.3.7.1(3) is used to permit the smoke compartment containing the atrium to be unlimited in size. The patient floor is divided into three smoke compartments by locating two smoke barriers away from the atrium opening, thus preserving the visual impact of the atrium. The center smoke compartment, which includes the atrium, is not limited in size, but the distance of travel from any point to a smoke barrier door is limited to 200 ft (61 m).

The provisions of 18/19.3.7 provide details for the design and installation of smoke barriers. As with other systems and features required by the Code, maintenance and care are important to the proper functioning of smoke barriers under fire or similar emergency. Exhibit 18/19.94 shows an open cross-corridor smoke barrier door on a nonpatient floor of a hospital. Tables line the corridor to support a crafts sale. Note that the door and its required space for proper operation have been left free of obstruction to help ensure that the door will close automatically, without interference, when needed.



Exhibit 18/19.94 Smoke barrier door left free of obstruction to permit proper closing.