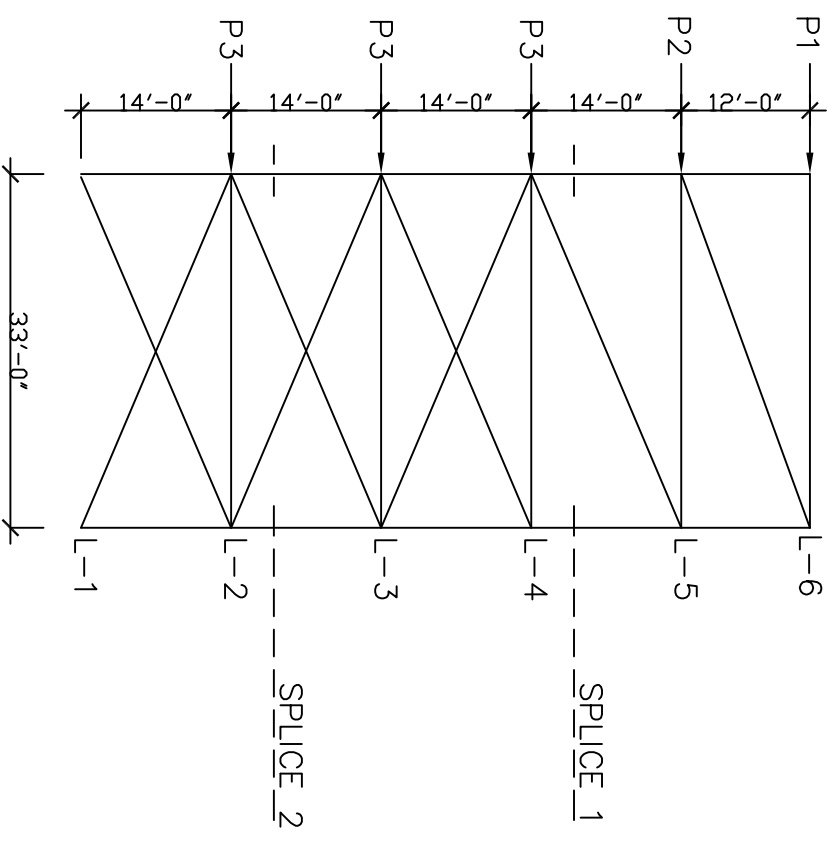


$$P1 : 40\text{psf} (12/2 + 1) (24/2 + 1) = 3.6\text{k}$$

$$P2 : 40\text{psf} [(12/2 + 1) (24/2 + 1) + (72/2 * (14/2 + 3))] = 18\text{k}$$

$$P3 : 40\text{psf} (14) (72/2) = 20.2\text{k}$$



FRAMING ELEVATION FRAMING LINE N & O