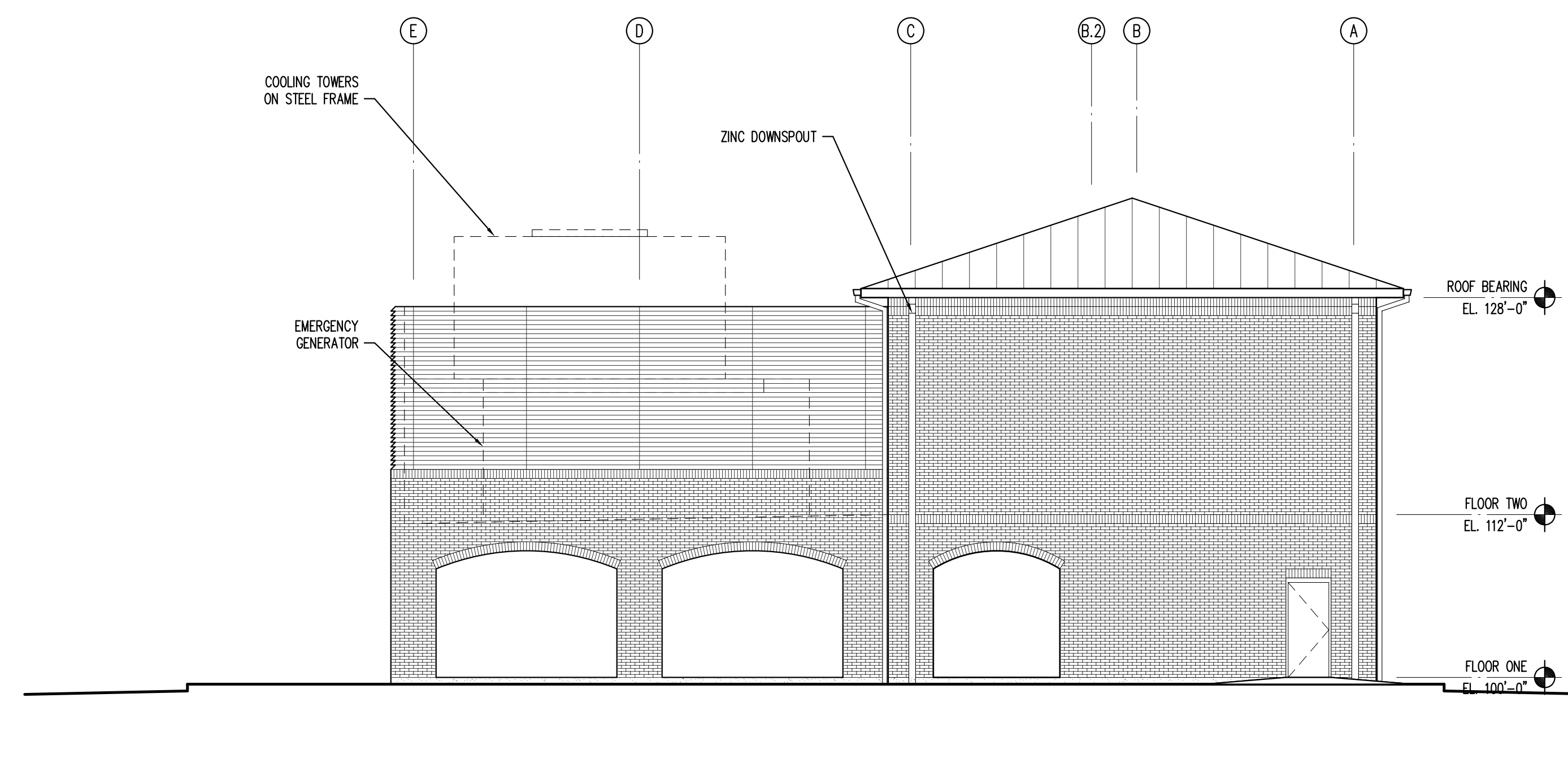
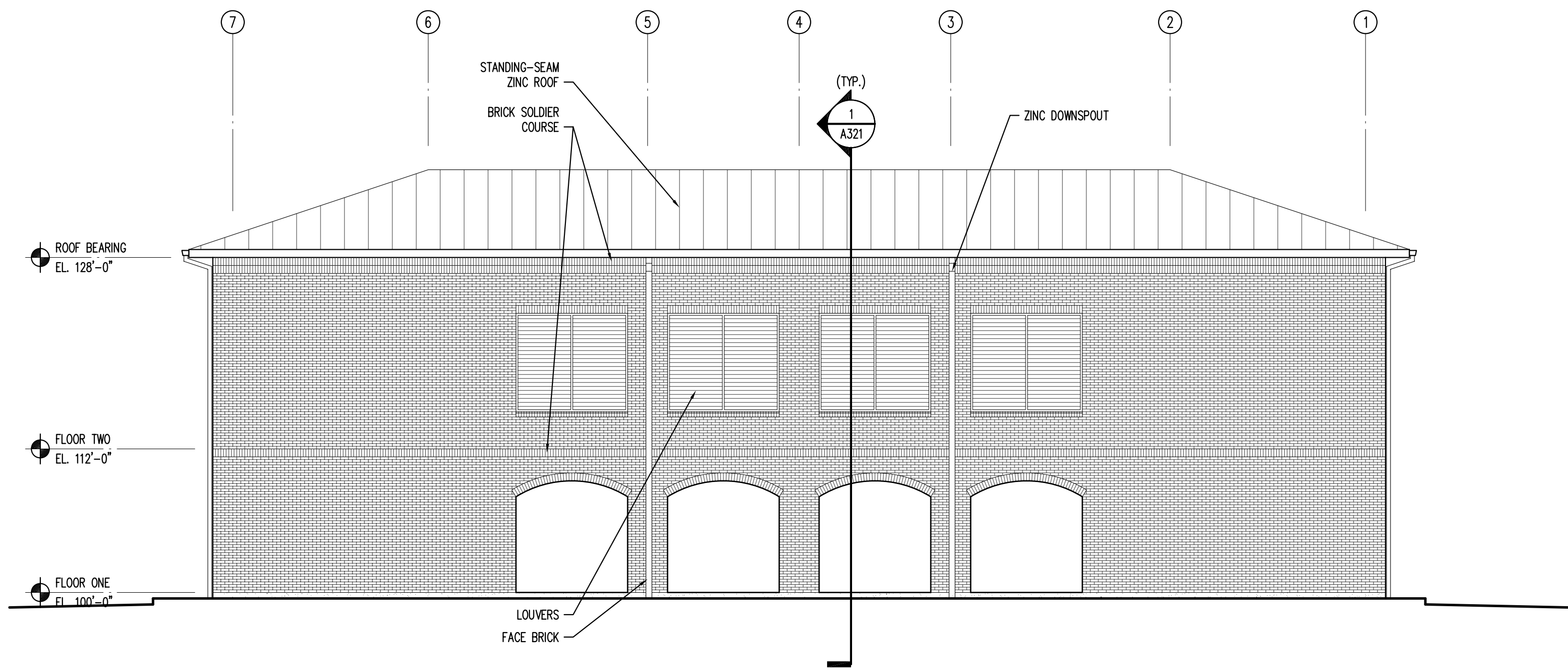


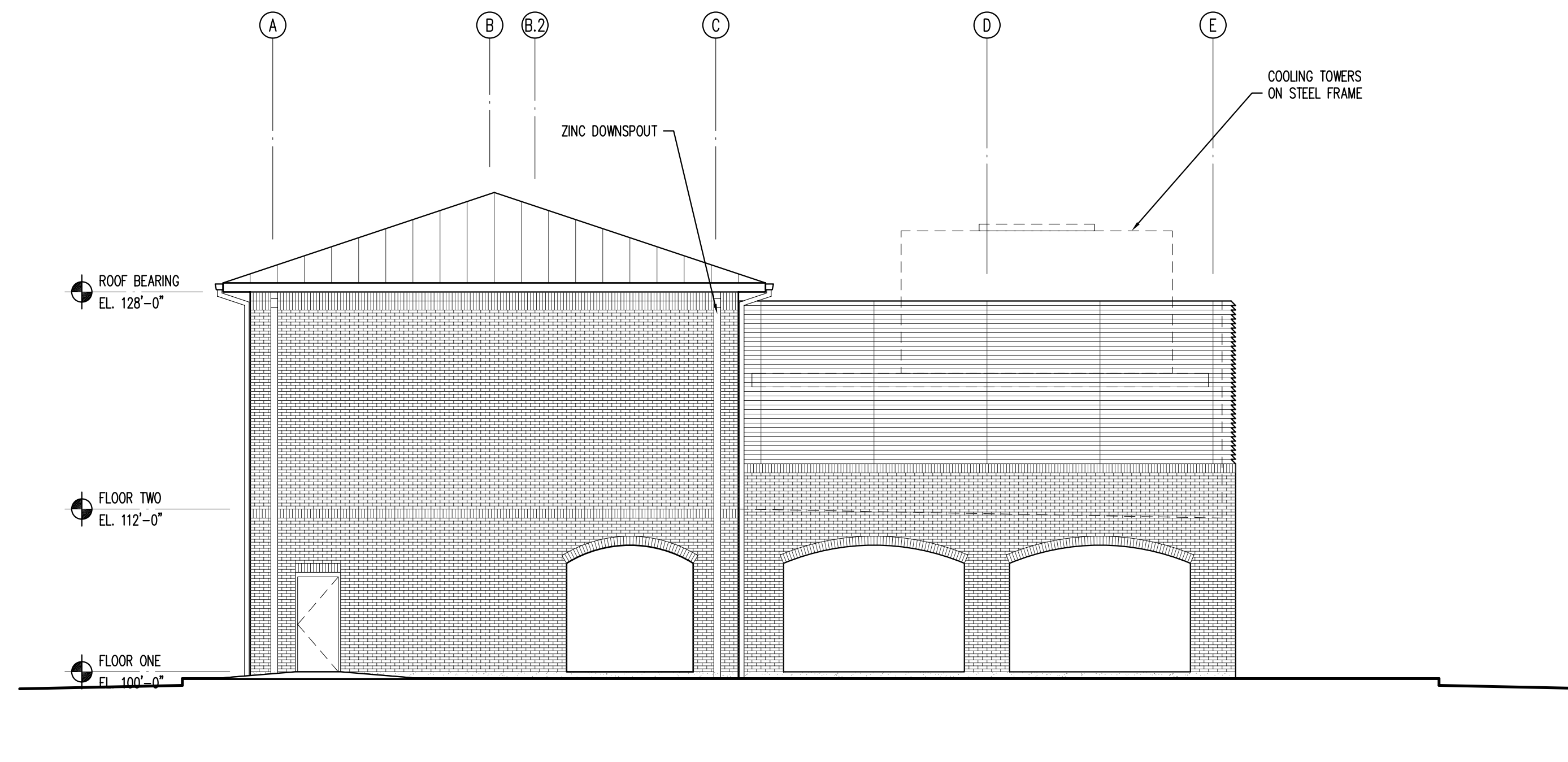
1 WEST ELEVATION
1/8" = 1'-0"



2 SOUTH ELEVATION
1/8" = 1'-0"



3 EAST ELEVATION
1/8" = 1'-0"



4 NORTH ELEVATION
1/8" = 1'-0"

BROADMOOR
DESIGN GROUP
PROFESSIONAL ARCHITECTURAL CORPORATION
METAIRIE, LOUISIANA 70002
2740 NORTH ARNOULT ROAD
(504) 885-5401
FAX (504) 885-6065

BlitchKnevel
ARCHITECTS
NEW ORLEANS, LOUISIANA 70130
757 ST. CHARLES AVENUE
(504) 524-4634
FAX (504) 524-5728

LOUISIANA ARMY NATIONAL GUARD
141st FIELD ARTILLERY BATTALION
READINESS CENTER
JACKSON BARRACKS NEW ORLEANS, LOUISIANA



2/22/06	PROG. REVIEW #1
3/10/06	PROG. REVIEW #2
3/27/06	PROG. REVIEW #3
4/10/06	PROG. REVIEW #4
5/3/06	PRELIM. DESIGN

MARK DATE DESCRIPTION
DRAWING ISSUED: 05/03/2006

NOB PROJECT NO.: 220027

PRELIMINARY DESIGN

DRAWING TITLE:
CENTRAL PLANT EXTERIOR ELEVATIONS

DRAWING NUMBER:

A211

SHEET 45 OF 106

These drawings are conceptual in nature and are not suitable for construction. It is the intent of these documents to clearly delineate the baseline minimum scope, scope and quality of the project. It is the responsibility of the design-builder that his proposal provides for a complete and functional facility responding to relative Army National Guard criteria, recognized industry standards and applicable building codes regardless of the content of these conceptual drawings. Further, it will be the responsibility of the successful design-builder and his architect of record to prepare complete construction documents responding to the fullest intent of the conceptual drawings and specifications.