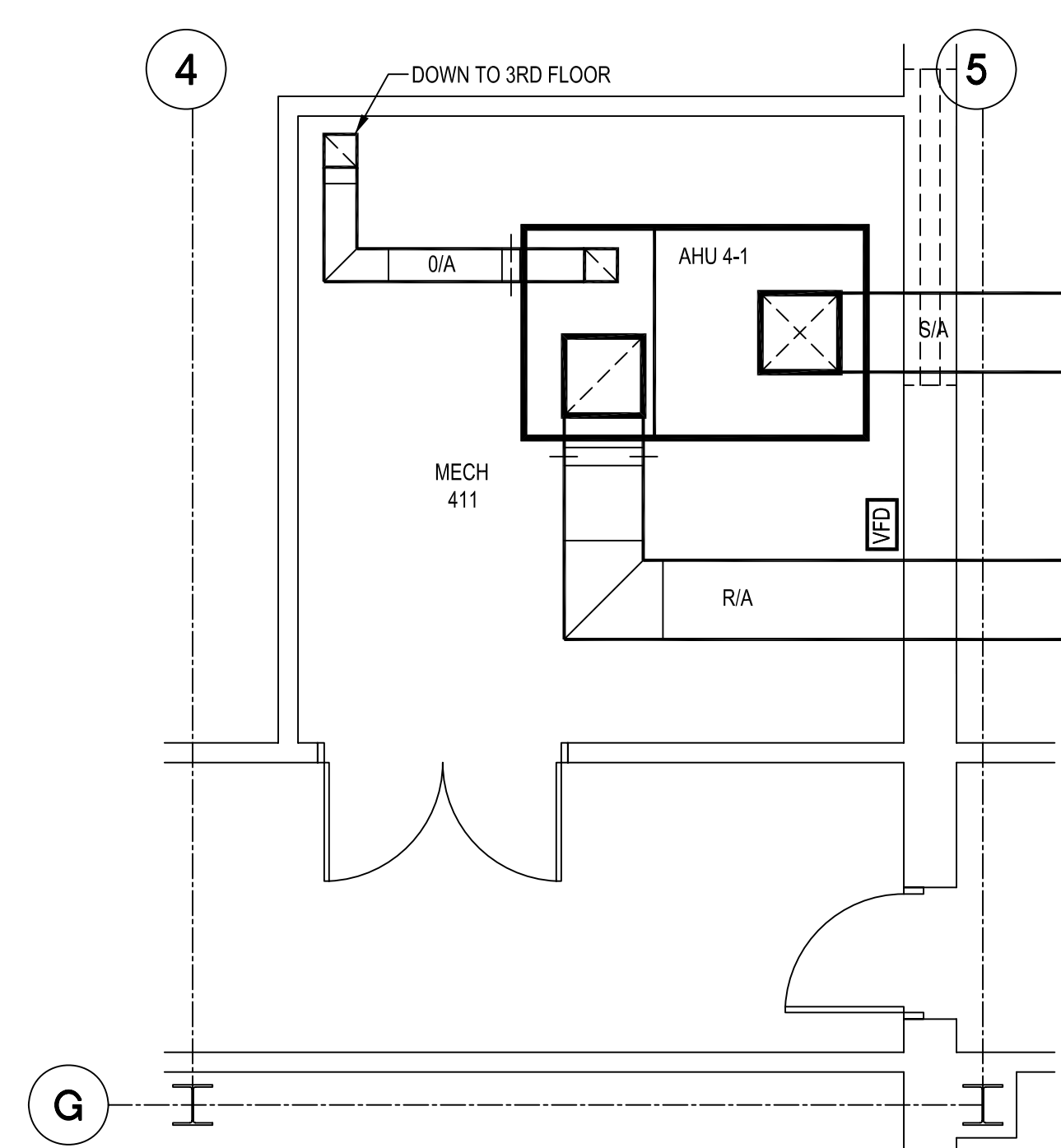
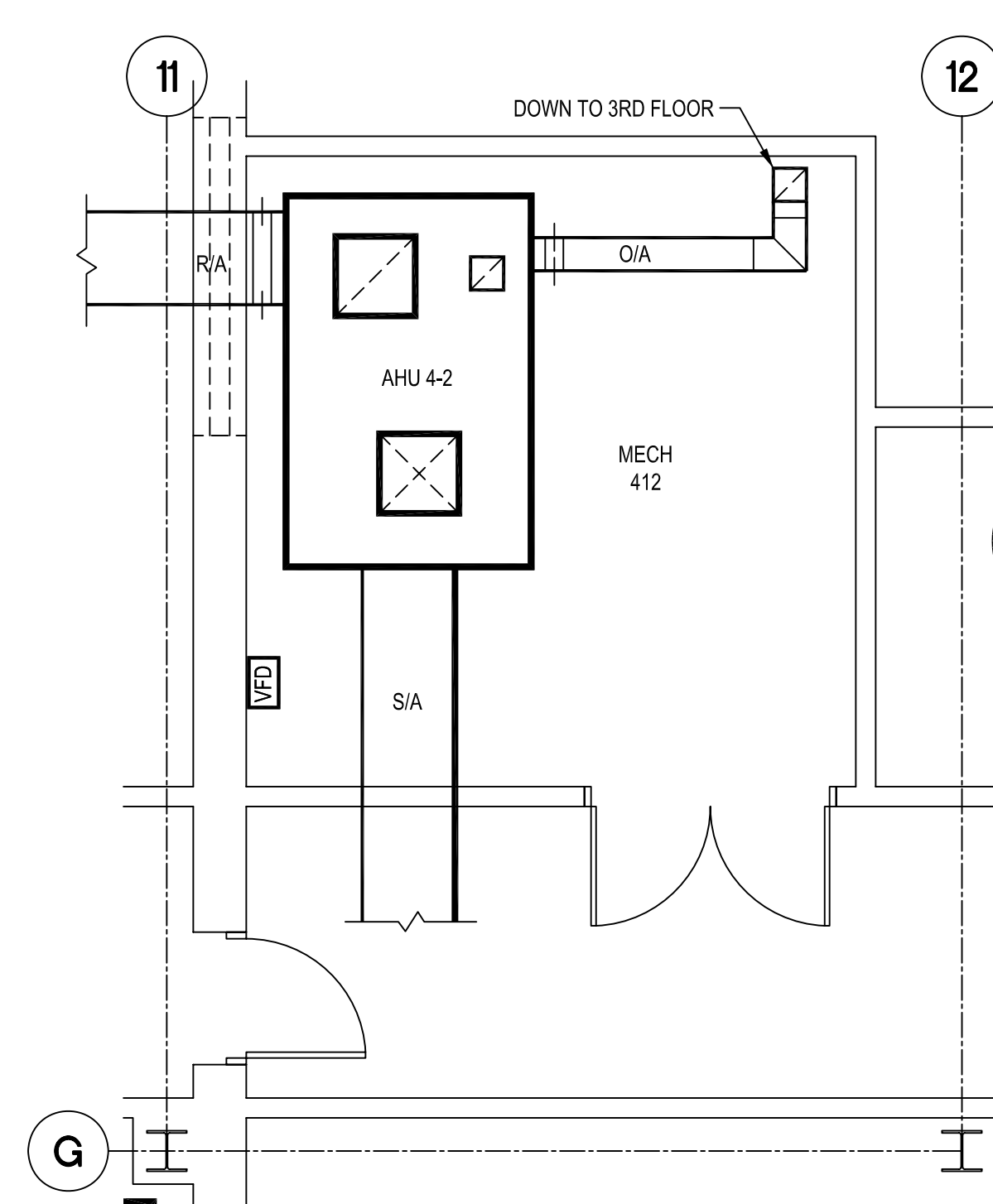


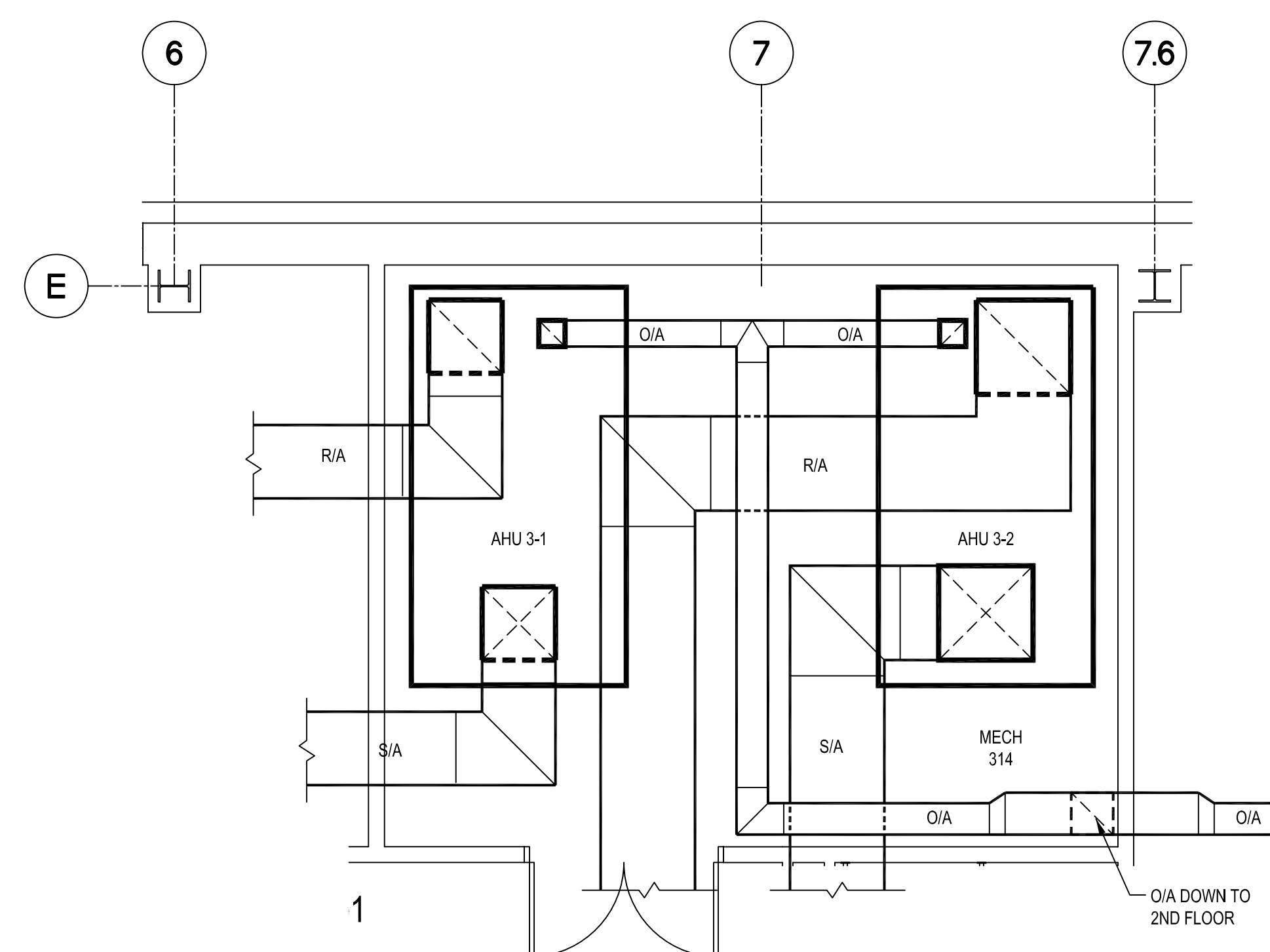
SECOND FLOOR MECHANICAL 213



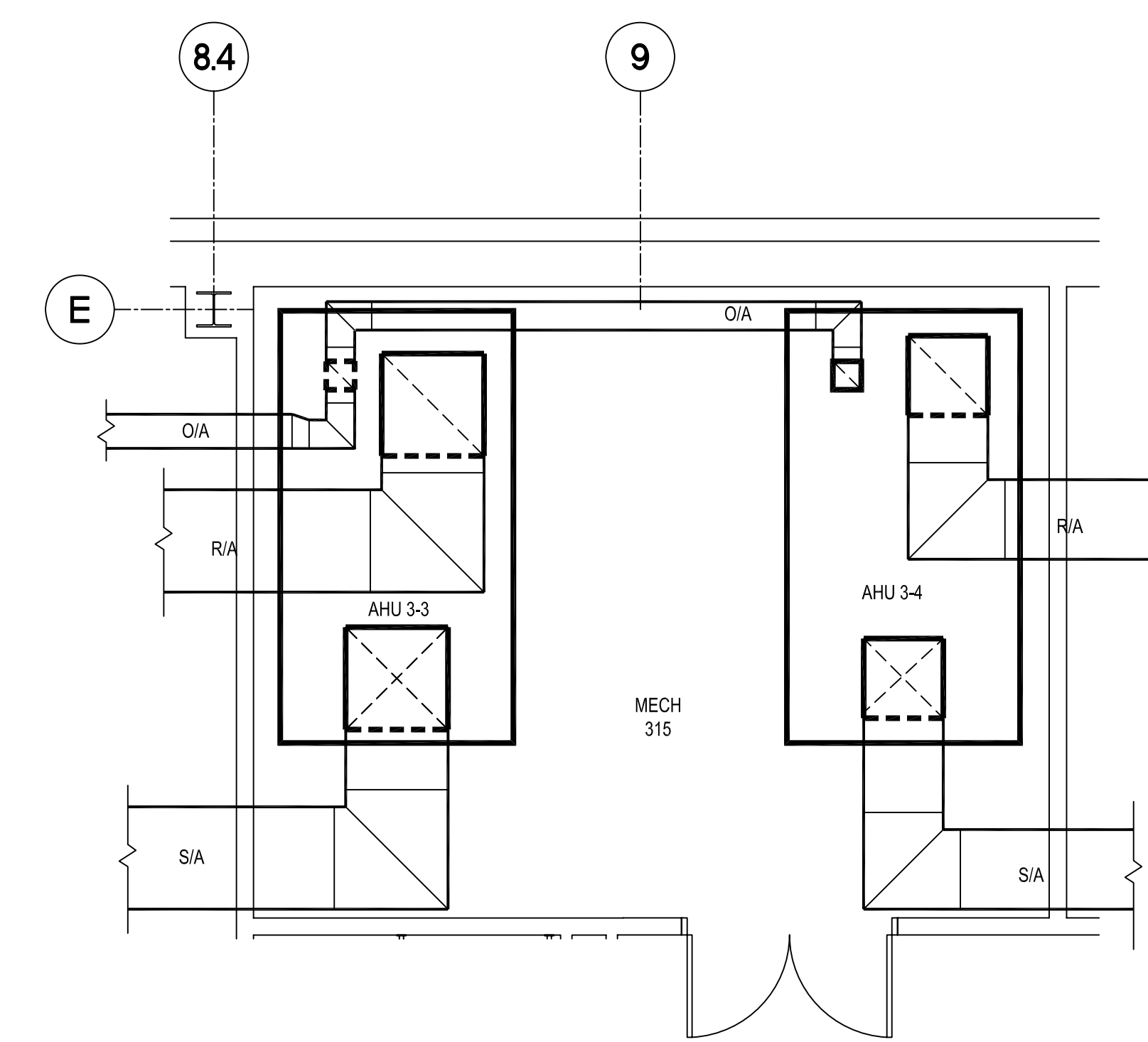
FOURTH FLOOR MECHANICAL 411



FOURTH FLOOR MECHANICAL 412

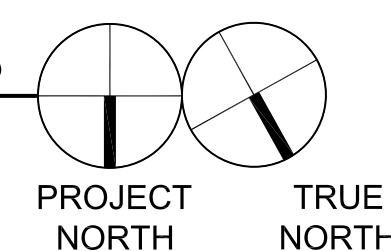
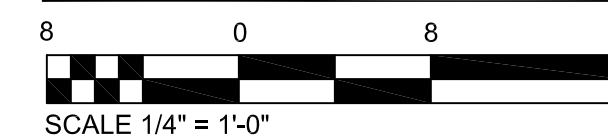


THIRD FLOOR MECHANICAL 317



THIRD FLOOR MECHANICAL 318

LARGE SCALE MECHANICAL ROOMS



**LUCIEN T. VIVIEN JR. & ASSOC., INC.**  
CONSULTING ENGINEERS  
1321 HICKORY AVENUE HARAHAN, LA 70123 (504) 228-5409

These drawings are conceptual in nature and are not suitable for construction. It is the intent of these documents to clearly delineate the baseline minimum scale, scope and quality of the project. It is the responsibility of the design-builder that his proposal provides for a complete and functional facility responding to relative Army National Guard criteria, recognized industry standards and applicable building codes regardless of the content of these conceptual drawings. Further, it will be the responsibility of the successful design-builder and his architect of record to prepare complete construction documents responding to the fullest intent of the conceptual drawings and specifications.



2/22/06	PROG. REVIEW #1
3/10/06	PROG. REVIEW #2
3/27/06	PROG. REVIEW #3
4/10/06	PROG. REVIEW #4
5/3/06	PRELIM. DESIGN

MARK	DATE	DESCRIPTION
	05/03/2006	DRAWING ISSUED

NGB PROJECT NO.: 220027

PRELIMINARY DESIGN

DRAWING TITLE:  
LARGE SCALE MECHANICAL ROOMS

DRAWING NUMBER:

M401  
SHEET 72 OF 106