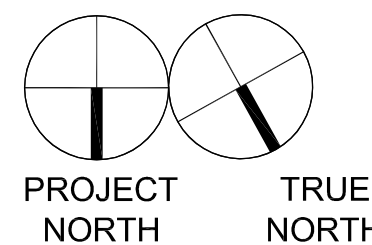


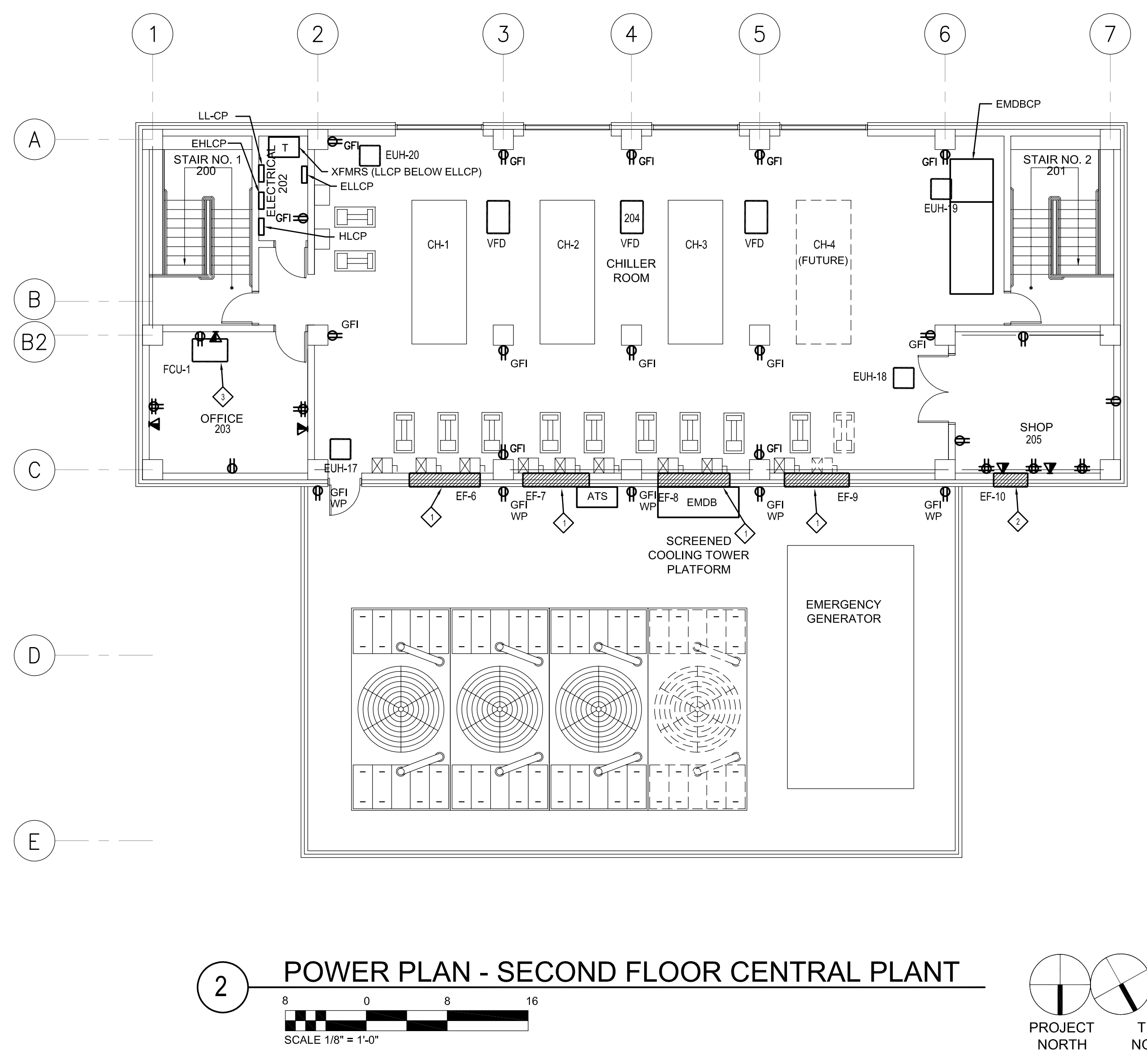
1 POWER PLAN - FIRST FLOOR CENTRAL PLANT
SCALE 1/8" = 1'-0"



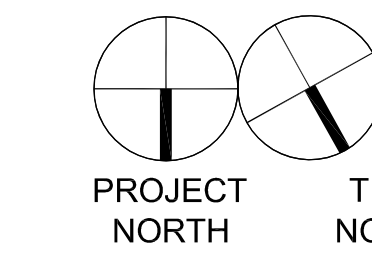
- CENTRAL PLANT EQUIPMENT LIST**
- CH-1: MCA = 390A, MOP = 544A, 480V, 3Ø
 - PCHWP-1: 10 HP, 480V, 3Ø
 - CWP-1: 25 HP, 480V, 3Ø
 - CT-1: 20 HP MOTOR PLUS 8KW HEAT, 480V, 3Ø
 - CH-2: MCA = 390A, MOP = 544A, 480V, 3Ø
 - PCHWP-2: 10 HP, 480V, 3Ø
 - CWP-2: 25 HP, 480V, 3Ø
 - CT-2: 20 HP MOTOR PLUS 8KW HEAT, 480V, 3Ø
 - CH-3: MCA = 390A, MOP = 544A, 480V, 3Ø
 - PCHWP-3: 10 HP, 480V, 3Ø
 - CWP-3: 25 HP, 480V, 3Ø
 - CT-3: 20 HP MOTOR PLUS 8KW HEAT, 480V, 3Ø
 - CH-4: MCA = 390A, MOP = 544A, 480V, 3Ø
 - PCHWP-4: 10 HP, 480V, 3Ø
 - CWP-4: 25 HP, 480V, 3Ø
 - CT-4: 20 HP MOTOR PLUS 8KW HEAT, 480V, 3Ø
 - SCHWP-1: 60 HP, 480V, 3Ø
 - SCHW-2: 60 HP, 480V, 3Ø
- NOTE:
ALL EUP'S ARE 5.6 KW, 277V, 1Ø.

- GENERAL NOTES (CENTRAL PLANT):**
- PROVIDE LIGHTNING PROTECTION SYSTEM FOR BUILDING
 - REFERENCE MECHANICAL PLANS FOR FINAL EQUIPMENT SIZES AND LOCATIONS.
 - ELECTRICAL CONNECTIONS FOR CHILLER #3 AND ASSOCIATED MECHANICAL EQUIPMENT ARE PART OF ALTERNATE 1A. REFERENCE MECHANICAL DRAWINGS.

- SPECIFIC NOTES:**
- ◇ EXHAUST FAN - 1/8 HP, 120V, 1Ø (EMERGENCY POWER)
 - ◇ FRACTIONAL HP EXHAUST FAN, INTERFACE WITH LIGHTS, 277V, 1Ø
 - ◇ FOU WITH ELECTRIC HEAT, 208-VOLT, 1Ø



2 POWER PLAN - SECOND FLOOR CENTRAL PLANT
SCALE 1/8" = 1'-0"



© 2006 IMC 1474
CONSULTING ENGINEERS
INC.
3120 209 STREET
METAIRIE, LOUISIANA 70002

BROADMOOR
DESIGN GROUP
ARCHITECTS
PROFESSIONAL ARCHITECTURAL CORPORATION
METAIRIE, LOUISIANA 70002
(504) 885-5005

BlitchKnevel
ARCHITECTS
NEW ORLEANS, LOUISIANA 70130
(504) 524-5128

LOUISIANA ARMY NATIONAL GUARD
141st FIELD ARTILLERY BATTALION
READINESS CENTER
JACKSON BARRACKS NEW ORLEANS, LOUISIANA



| | | |
|---|---------|-----------------|
| △ | 2/22/06 | PROG. REVIEW #1 |
| △ | 3/1/06 | PROG. REVIEW #2 |
| △ | 3/27/06 | PROG. REVIEW #3 |
| △ | 4/10/06 | PROG. REVIEW #4 |
| △ | 5/3/06 | PRELIM. DESIGN |

| MARK | DATE | DESCRIPTION |
|----------------------------|------|-------------|
| DRAWING ISSUED: 05/03/2006 | | |

NOB PROJECT NO.: 220027

PRELIMINARY DESIGN

DRAWING TITLE:
POWER PLAN
FIRST & SECOND FL.
CENTRAL PLANT

DRAWING NUMBER:

E152
SHEET 97 OF 106

These drawings are conceptual in nature and are not suitable for construction. It is the intent of these documents to clearly delineate the baseline minimum scale, scope and quality of the project. It is the responsibility of the design-builder that his proposal provides for a complete and functional facility responding to relative Army National Guard criteria, recognized industry standards and applicable building codes regardless of the content of these conceptual drawings. Further, it will be the responsibility of the successful design-builder and his architect of record to prepare complete construction documents responding to the fullest intent of the conceptual drawings and specifications.