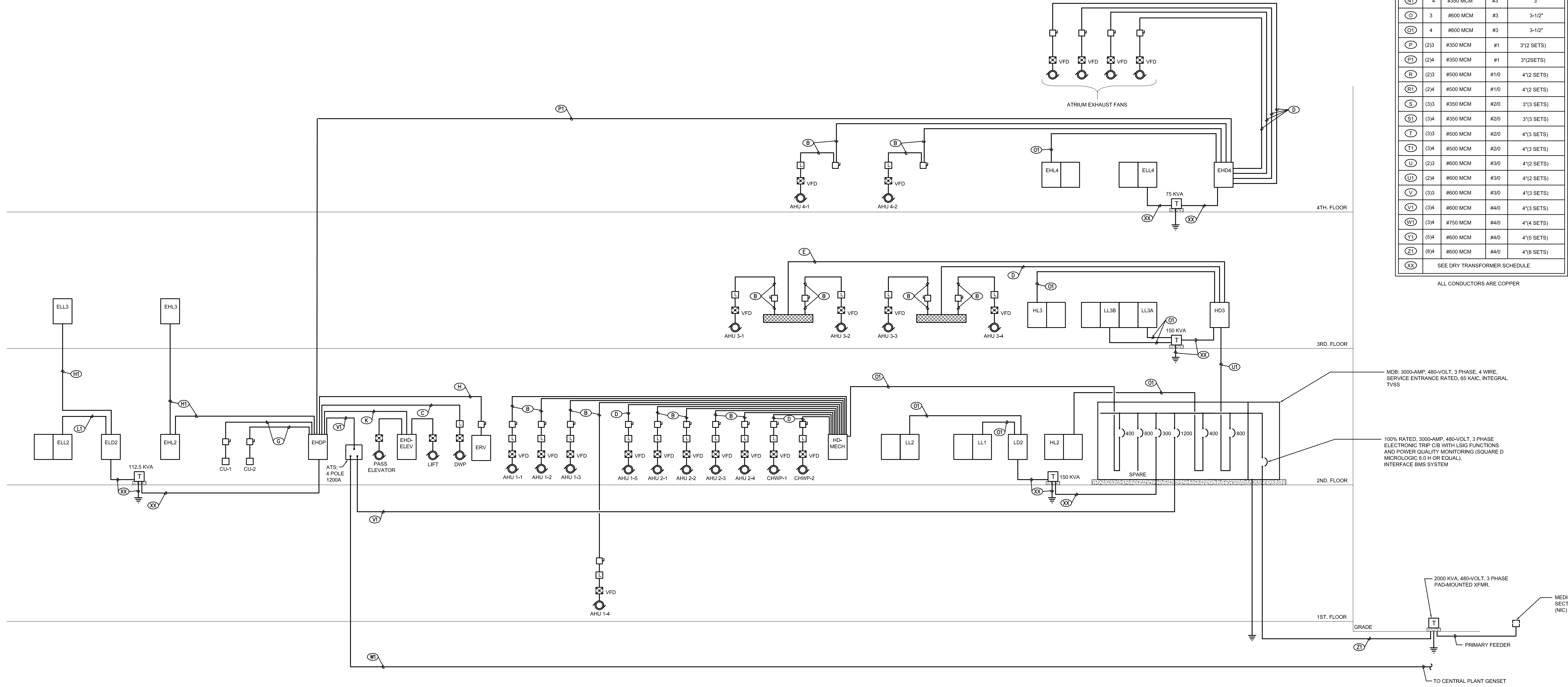


DRY TRANSFORMER SCHEDULE - 480Δ 208Y/120 VOLT						
ITEM	KVA	PRIMARY SIDE 480 VOLTS Δ		SECONDARY SIDE 208/120 VOLTS WYE		SERVICE GROUND CONDUCTOR (IN/FEET)
		FULL LOAD (150% MIN.)	WIRING THW/THHN	FULL LOAD (125% MAX.)	WIRING THW/THHN	
1	9	10.8	20A, 3-#12, #12 GRD., 3/4"C.	25	30A, 4-#10, #10 GRD., 3/4"C.	#8
2	15	18.0	30A, 3-#10, #10 GRD., 3/4"C.	41.7	50A, 4-#8, #8 GRD., 1"C.	#8
3	30	36.1	60A, 3-#6, #10 GRD., 1"C.	83.3	100A, 4-#3, #8 GRD., 1-1/4"C.	#8
4	45	54.2	100A, 3-#3, #8 GRD., 1-1/4"C.	125.0	150A, 4-#10, #6 GRD., 2"C.	#8
5	75	90.4	150A, 3-#10, #6 GRD., 1-1/2"C.	208.4	250A, 4-#40, #4 GRD., 2-1/2"C.	#2
6	112.5	135.5	200A, 3-#30, #6 GRD., 2"C.	312.5	400A, 4-#500 MCM, #3 GRD., 3-1/2"C.	#10
7	150	180.7	300A, 3-#300 MCM, #4 GRD., 3"C.	418.7	(2) 4-#350 MCM, #1 GRD., 2-3"C.	#20
8	225	271.1	400A, 3-#500 MCM, #3 GRD., 3-1/2"C.	625.0	800A, (2) 4-#500 MCM, #10 GRD., (2) 3-1/2"C.	#30

NOTES: 1. TRANSFORMER "X" SHALL BE BONDED WITH SECONDARY NEUTRAL CONDUCTOR, AND FEEDER GROUND CONDUCTOR TO:  
 a) BUILDING STEEL, b) COLD WATER PIPE, AND c) 5/8"x10'-0" COPPER CLAD GROUND ROD ON BUILDING MAIN SERVICE ENTRANCE GROUND.

FEEDER SCHEDULE (TYPICAL SCHEDULE - NOT ALL LABELS ARE NECESSARILY USED.)				
LABEL	NO.	SIZE	GND.	CONDUIT
A	3	#12	#12	1/2"
AA	4	#12	#12	1/2"
B	3	#10	#10	3/4"
BB	4	#10	#10	3/4"
C	3	#8	#10	1"
CC	4	#8	#10	1"
D	3	#6	#8	1"
DD	4	#6	#8	1"
E	3	#4	#8	1-1/4"
EE	4	#4	#8	1-1/4"
F	3	#3	#8	1-1/4"
FF	4	#3	#8	1-1/4"
G	3	#2	#8	1-1/4"
GG	4	#2	#8	1-1/4"
H	3	#1	#8	1-1/2"
HH	4	#1	#8	1-1/2"
I	3	#10	#8	1-1/2"
II	4	#10	#8	1-1/2"
J	3	#20	#6	2"
JJ	4	#20	#6	2"
K	3	#30	#6	2"
KK	4	#30	#6	2"
L	3	#40	#4	2"
LL	4	#40	#4	2-1/2"
M	3	#250 MCM	#4	2-1/2"
MM	4	#250 MCM	#4	2-1/2"
N	3	#350 MCM	#3	3"
NN	4	#350 MCM	#3	3"
O	3	#600 MCM	#3	3-1/2"
OO	4	#600 MCM	#3	3-1/2"
P	(2)3	#350 MCM	#1	3"(2SETS)
PP	(2)4	#350 MCM	#1	3"(2SETS)
R	(2)3	#500 MCM	#10	4"(2SETS)
RR	(2)4	#500 MCM	#10	4"(2SETS)
S	(3)3	#350 MCM	#20	3"(3SETS)
SS	(3)4	#350 MCM	#20	3"(3SETS)
T	(3)3	#500 MCM	#20	4"(3SETS)
TT	(3)4	#500 MCM	#20	4"(3SETS)
U	(2)3	#600 MCM	#30	4"(2SETS)
UU	(2)4	#600 MCM	#30	4"(2SETS)
V	(3)3	#600 MCM	#30	4"(3SETS)
VV	(3)4	#600 MCM	#30	4"(3SETS)
W	(3)4	#750 MCM	#40	4"(4SETS)
WW	(5)4	#600 MCM	#40	4"(5SETS)
XX	(8)4	#600 MCM	#40	4"(8SETS)

ALL CONDUCTORS ARE COPPER



1 ELECTRICAL ONE-LINE RISER DIAGRAM-READINESS CENTER  
SCALE: NTS

© 2006 IMC CONSULTING ENGINEERS  
1474 INC.  
3120 20th STREET  
METAIRIE, LOUISIANA 70002

**BROADMOOR** DESIGN GROUP  
PROFESSIONAL ARCHITECTURAL CORPORATION  
2740 NORTH PAROULT ROAD  
METAIRIE, LOUISIANA 70002  
(504) 885-5085

**BlitchKnevel** ARCHITECTS  
NEW ORLEANS, LOUISIANA 70130  
757 ST. CHARLES AVENUE  
NEW ORLEANS, LOUISIANA 70112  
(504) 524-4834

LOUISIANA ARMY NATIONAL GUARD  
141st FIELD ARTILLERY BATTALION  
READINESS CENTER  
JACKSON BARRACKS NEW ORLEANS, LOUISIANA



Δ	2/22/06	PROG. REVIEW #1
Δ	3/1/06	PROG. REVIEW #2
Δ	3/27/06	PROG. REVIEW #3
Δ	4/10/06	PROG. REVIEW #4
Δ	5/3/06	PRELIM. DESIGN

MARK	DATE	DESCRIPTION

DRAWING ISSUED: 05/03/2006

NOB PROJECT NO.: 220027

PRELIMINARY DESIGN  
ELECTRICAL RISER DIAGRAMS

DRAWING NUMBER:

E612  
SHEET 104 OF 106

These drawings are conceptual in nature and are not suitable for construction. It is the intent of these documents to clearly delineate the baseline minimum scale, scope and quality of the project. It is the responsibility of the design-builder that his proposal provides for a complete and functional facility responding to relative Army National Guard criteria, recognized industry standards and applicable building codes regardless of the content of these conceptual drawings. Further, it will be the responsibility of the successful design-builder and his architect of record to prepare complete construction documents responding to the fullest intent of the conceptual drawings and specifications.