

## FEATURES & SPECIFICATIONS

### INTENDED USE

Deep-cell parabolic luminaires for use in open area applications and electronic offices where optical control, visual comfort and light cut-off are important.

### ATTRIBUTES

Choice of diffuse or specular louvers utilize the latest developments in louver finishing for minimized louver iridescence.

### CONSTRUCTION

Black reveal provides floating louver appearance, conceals optional air-supply slots. Optional heat-removal dampers and air-pattern control blades allow airflow control.

Overlapping flange and modular ceiling trims factory-installed with standard swing-gate hangers or field convertible with optional trim and hangers. T-hinges die-formed for maximum strength. Latches spring-loaded, concealed in reveal.

Housing formed from cold-rolled steel. Louvers formed from anodized aluminum. No asbestos is used in this product.

### FINISH

Five-stage iron-phosphate pretreatment ensures superior paint adhesion and rust resistance. Painted parts finished with high-gloss, baked white enamel.

### ELECTRICAL SYSTEM

Thermally-protected, resetting, Class P, HPF, non-PCB, UL Listed, CSA certified ballast is standard. Energy saving and electronic ballasts are sound rated A.

Luminaire is suitable for damp locations. AWM, TFN or THHN wire used throughout, rated for required temperatures.

### LISTING

UL Listed (standard). CSA Certified or NOM Certified (see Options).

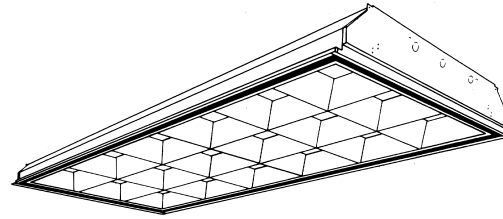
### WARRANTY

Guaranteed for one year against mechanical defects in manufacture.

Catalog Number	
Notes	Type

## PARAMAX® Parabolic Troffer

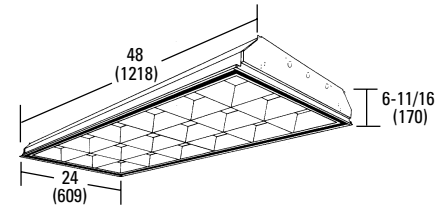
# PM4 2'x4'



4" Deep Louver

### Specifications

Length: 48 (1218)  
 Width: 24 (609)  
 Depth: 6-11/16 (170)  
 Weight: 38 lbs (17 kg)



All dimensions are inches (millimeters).

Specifications subject to change without notice.

## ORDERING INFORMATION

Example: **2PM4 G B 2 32 12LD 120 GEB**

2PM4									
Series	Air function	Number of lamps	Lamp type	Voltage	Options	Trim type	Number of cells <sup>1</sup>	Louver finish	
<b>2PM4</b> Paramax 4" deep cell parabolic, 2' wide	<b>A</b> Air supply/return (slots in side trim) <b>H</b> Heat removal (through lamp cavity, dampers available)	<b>2, 3, 4, 6</b> Not included.	<b>32</b> 32W T8 (48") <b>40</b> 40W T12 (48")	<b>120, 277, 347, MVOLT<sup>2</sup></b> Others available.	<b>2/1</b> Two 1-lamp ballast <b>1/3</b> One 3-lamp ballast <b>1/4</b> One 4-lamp ballast <b>GEB</b> Electronic ballasts, ≤20% THD <b>GEB10IS</b> Electronic ballast ≤10% THD, Instant Start <b>GEB10RS</b> Electronic ballast ≤10% THD, Rapid Start <b>EL</b> Emergency battery pack (nominal 300 lumens; see Fluorescent Battery Packs tab) <b>GLR</b> Internal fast-blow fuse <b>GMF</b> Internal slow-blow fuse <b>LST</b> Tandem fixture pairs (shared ballasts) <b>PWS1836</b> 6' prewire, 3/8" dia., 18-gauge, 3 wires <b>LP__</b> Lamped, specify lamp type and color <b>HRD</b> Heat-removal dampers <b>APB</b> Air-pattern control blades (A & D models only) <b>ACS</b> Air closure strips (A & D models only) <b>CRE</b> Flanged trim for continuous row mounting (end) <b>CRM</b> Flanged trim for continuous row mounting (middle) <b>PAF</b> Painted after fabrication (white enamel) <b>2R</b> Two reflector channel covers <sup>3</sup>	<b>G</b> Grid <b>F</b> Overlapping flange <b>MT</b> Modular fit-in <b>ST</b> Screw slot	<b>12, 16, 18, 24, 32</b>	<b>LD</b> Low iridescent anodized diffuse silver <b>LS</b> Low iridescent anodized specular silver <b>C</b> Diffuse gold anodized (champagne)	<b>CSA</b> CSA Certified <b>NOM</b> NOM Certified <b>JP8</b> Palletized and stretch-wrapped (8 per), G and MT trim only

### NOTES:

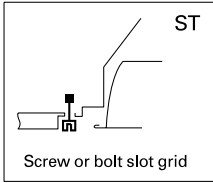
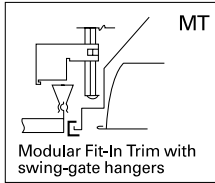
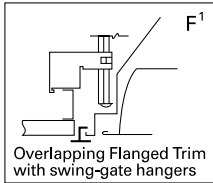
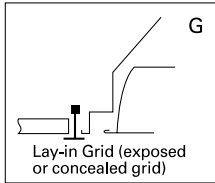
- Where applicable, number of rows divisible by the number of lamps unless specified otherwise.
- MVOLT available with GEB10IS only.
- Only available with 3-lamp 18 and 24 cell models.

# PM42'x4" Straight Lamps, 4" Louver Family

## MOUNTING DATA

Continuous row mounting of flanged units requires CRE and CRM trim options (see Options).

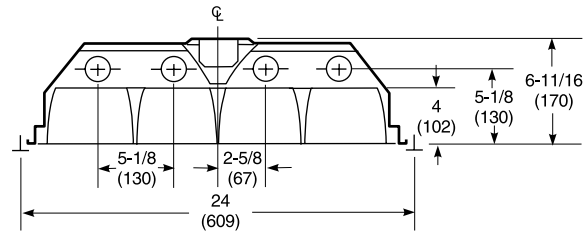
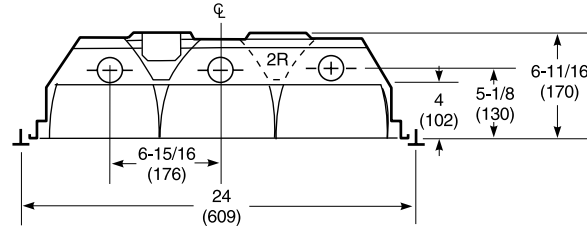
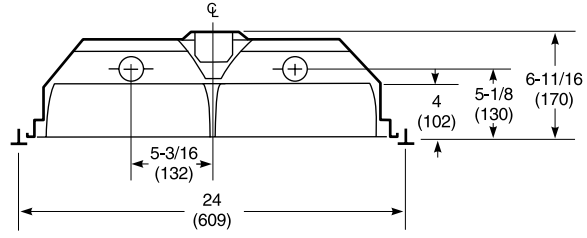
Ceiling Type	Appropriate Trim Type
Exposed grid tee	G
Concealed grid tee	G, ST
Concealed Z-spline	F, MT
Metal pan (consult factory)	MT
Screw slot (consult factory)	ST
Acoustical tile, plaster, or plasterboard on rigid support parallel to lamps	F



NOTE:

1 Recommended rough-in dimensions for F trim fixtures 24"x48" (Tolerance is +1/4", -0"). Swing-gate range 1" to 4-13/16", span 23-1/2" to 26-5/16".

## DIMENSIONS



## PHOTOMETRICS

Calculated using the zonal cavity method in accordance with IESNA LM41 procedures. Floor reflectances are 20%. Lamp configurations shown are typical. Full photometric data on these and other configurations available upon request.

### 2PM4 G B 2 32 12LD

Report LTL 4838 - Lumens per lamp = 2900

S/MH (along) 1.2 (across) 1.8

#### Coefficient of Utilization

Ceiling	80%			70%			50%		
	70%	50%	30%	70%	50%	30%	50%	30%	10%
0	82	82	82	80	80	80	77	77	77
1	77	75	72	75	73	71	70	69	67
2	72	67	64	70	66	63	64	61	59
3	67	61	56	65	60	55	58	54	51
4	61	54	49	60	54	49	52	48	45
5	56	49	43	55	48	43	47	42	39
6	52	44	38	51	43	38	42	37	34
7	48	39	33	47	38	33	37	33	29
8	44	35	29	43	34	29	33	28	25
9	40	31	25	39	30	25	30	25	21
10	37	28	22	36	27	22	27	22	19

#### Zonal Lumens Summary

Zone	Lumens	%Lamp	%Fixture
0-30	1194	20.6	29.8
0-40	2045	35.3	51.0
0-60	3804	65.6	94.9
0-90	4010	69.1	100.0
90-180	0	0	0
0-180	4010	69.1	100.0

### 2PM4 G B 3 32 18LD

Report LTL 6757 - Lumens per lamp = 2850

S/MH (along) 1.2 (across) 1.5

#### Coefficient of Utilization

Ceiling	80%			70%			50%		
	70%	50%	30%	70%	50%	30%	50%	30%	10%
0	78	78	78	76	76	76	73	73	73
1	73	71	68	71	69	67	66	65	63
2	68	63	60	66	62	59	60	57	55
3	62	57	52	61	56	51	54	50	47
4	58	51	46	56	50	45	48	44	41
5	53	46	41	52	45	40	44	40	36
6	49	42	36	48	41	36	40	35	32
7	46	38	33	45	37	32	36	32	29
8	43	35	29	42	34	29	33	29	26
9	40	32	27	39	31	27	31	26	23
10	37	29	24	37	29	24	28	24	21

#### Zonal Lumens Summary

Zone	Lumens	%Lamp	%Fixture
0-30	1911	22.3	34.1
0-40	3247	38.0	57.9
0-60	5313	62.1	94.8
0-90	5604	65.5	100.0
90-180	0	0	0
0-180	5604	65.5	100.0

### 2PM4 G B 4 32 32LD

Report LTL 5573 - Lumens per lamp = 2900

S/MH (along) 1.2 (across) 1.3

#### Coefficient of Utilization

Ceiling	80%			70%			50%		
	70%	50%	30%	70%	50%	30%	50%	30%	10%
0	66	66	66	64	64	64	62	62	62
1	62	60	59	61	59	58	57	56	55
2	58	55	53	57	54	52	52	50	49
3	55	50	47	54	50	47	48	46	43
4	51	46	42	50	45	42	44	41	39
5	47	42	38	46	41	37	40	37	34
6	44	38	34	43	37	34	37	33	31
7	41	34	30	40	34	30	33	30	27
8	38	31	27	37	31	27	30	26	24
9	35	28	24	34	28	24	27	23	21
10	32	26	21	32	25	21	25	21	19

#### Zonal Lumens Summary

Zone	Lumens	%Lamp	%Fixture
0-30	2635	22.7	41.0
0-40	4179	36.0	65.0
0-60	6294	54.3	97.8
0-90	6433	55.5	100.0
90-180	0	0	0
0-180	6433	55.5	100.0

Energy (Calculated in accordance with NEMA standard LE-5)

LER.FP	ANNUAL ENERGY COST*	LAMP DESCRIPTION	LAMP LUMENS	BALLAST FACTOR	WATTS
53	\$4.53	(2) 32W T8	2850	.94	70
57	\$4.21	(3) 32W T8	2850	.88	86
50	\$4.80	(4) 32W T8	2850	.88	111

\* Comparative yearly lighting energy cost per 1000 lumens



An AcuityBrands Company

### Lithonia Lighting

Acuity Lighting Group, Inc.

Fluorescent

One Lithonia Way, Conyers, GA 30012

Phone: 800-858-7763 Fax: 770-929-8789

In Canada: 1100 50th Ave., Lachine, Quebec H8T 2V3

www.lithonia.com