



# Standard Test Method for Thermal Shock Resistance of Glass Containers<sup>1</sup>

This standard is issued under the fixed designation C 149; the number immediately following the designation indicates the year of original adoption or, in the case of revision, the year of last revision. A number in parentheses indicates the year of last reapproval. A superscript epsilon ( $\epsilon$ ) indicates an editorial change since the last revision or reapproval.

*This standard has been approved for use by agencies of the Department of Defense.*

## 1. Scope

1.1 This test method covers the determination of the relative resistance of commercial glass containers (bottles and jars) to thermal shock and is intended to apply to all types of glass containers that are required to withstand sudden temperature changes (thermal shock) in service such as in washing, pasteurization, or hot pack processes, or in being transferred from a warm to a colder medium or *vice versa*.

1.2 The values stated in SI units are to be regarded as the standard. The values given in parentheses are for information only.

1.3 *This standard does not purport to address all of the safety concerns, if any, associated with its use. It is the responsibility of the user of this standard to establish appropriate safety and health practices and determine the applicability of regulatory limitations prior to use.*

## 2. Referenced Documents

### 2.1 ASTM Standards:

C 224 Practice for Sampling Glass Containers<sup>2</sup>

### 2.2 ASTM Adjuncts:

C 149 Apparatus for thermal shock test of glass containers (6 Drawings)<sup>3</sup>

## 3. Apparatus

3.1 The apparatus shall consist essentially of a basket for holding the glassware upright, two tanks, one containing hot water and one containing cold water, and an automatically timed means for immersing and transferring the basket of bottles from the hot to the cold bath. A suitable type of apparatus is illustrated in Fig. 1.<sup>3</sup>

3.2 A device shall be provided to maintain the temperature of the baths within  $\pm 1.1^\circ\text{C}$  ( $2^\circ\text{F}$ ) of the specified temperatures. Indicating controllers that control the heating of the hot water and the cooling of the cold water are recommended. Otherwise

dial thermometers should be attached and the temperatures controlled manually.

3.3 The capacity of each tank shall be at least 3.8 L (1 gal) for each 0.45 kg (1 lb) of glass tested.

## 4. Sampling

4.1 Methods of sampling a minimum lot from a group of containers of a given type are given in Practice C 224, for the various situations to which it may apply.

## 5. Procedure

5.1 Adjust the temperatures of the baths so that the cold bath is at  $21^\circ\text{C}$  ( $70^\circ\text{F}$ ) and the hot bath is at a temperature hotter than the cold bath by a specified differential. (In most cases this differential will be  $42^\circ\text{C}$  ( $75^\circ\text{F}$ ) for the first immersion (Note 1). Fill, or partially fill, the basket, with empty bottles, and when the temperatures of the baths are within  $\pm 1.1^\circ\text{C}$  ( $2^\circ\text{F}$ ) of those specified immerse the basket in the hot bath in such a manner that the bottles become completely filled with hot water, allow to soak for 5 min, transfer to the cold bath, and immerse for 30 s, and then remove from the cold bath. Control the 5-min immersion in the hot bath within 10 s, and the time of transfer from the hot to the cold bath shall be  $15 \pm 1$  s. During the test, protect the apparatus from drafts in a sheltered area. Observe the number of containers failing in the test by individual inspection of each.

NOTE 1—If a cold bath temperature other than  $21^\circ\text{C}$  ( $70^\circ\text{F}$ ) is used, the specified differential may be decreased (increased) by  $0.5^\circ\text{C}$  ( $1^\circ\text{F}$ ) for each increase (decrease) of  $5.6^\circ\text{C}$  ( $10^\circ\text{F}$ ) above (below) the recommended cold bath temperature.

5.2 Use one of the following test procedures depending upon the purpose of the test.

5.2.1 *Pass Test*—Apply the test at a predetermined differential. This pass test is sufficient for the routine testing of samples from continuous production in a manufacturer's plant.

5.2.2 *Progressive Test (to a Predetermined Percent of Breakage)*—Where it may be desirable to conduct the test as a measurement test, the test described in 5.1 may be repeated, the temperature differential being increased, stepwise, by uniform increments (usually 2.8 or  $5.6^\circ\text{C}$  (5 or  $10^\circ\text{F}$ ) each step) by increasing the temperature of the hot water bath, until the predetermined percent of containers is broken.

5.2.3 *Progressive Test (Total)*—As an alternative to the

<sup>1</sup> This method is under the jurisdiction of ASTM Committee C-14 on Glass and Glass Products and is the direct responsibility of Subcommittee C14.07 on Glass Containers.

Current edition approved Jan. 31, 1986. Published March 1986. Originally published as C 149 – 39 T. Last previous edition C 149 – 77<sup>e1</sup>.

<sup>2</sup> *Annual Book of ASTM Standards*, Vol 15.02.

<sup>3</sup> Detailed drawings are available from ASTM Headquarters. Order Adjunct No. 12-301490-00.

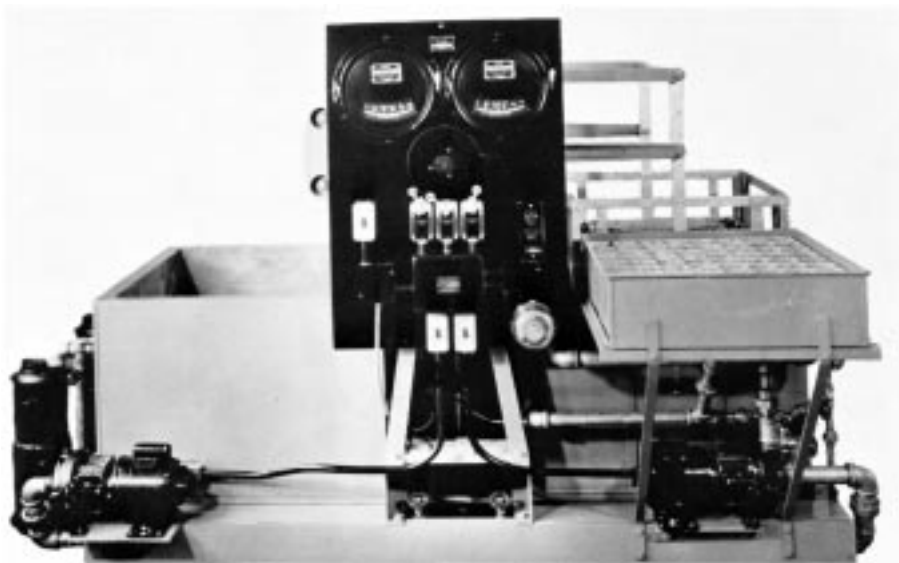


FIG. 1 Automatic Thermal Shock Testing Machine

progressive test described in 5.2.2, the progressive test may be continued until all of the containers fail.

5.2.4 *High-Level Test*—A single test at a predetermined differential sufficiently high to break a portion of the sample may be made.

## 6. Report

6.1 Report the following information:

6.1.1 Report of method of sampling (see Practice C 224),

6.1.2 Number of containers from each mold included in the sample,

6.1.3 Time of transfer used,

6.1.4 Results of test (use one of the following depending on the kind of test):

6.1.4.1 For the pass test in accordance with 5.2.1: (1) temperature differential used, and (2) number of containers that failed in the test.

6.1.4.2 For the progressive test in accordance with 5.2.2: (1) differential at which the first failure occurred and number of containers that failed at that differential, and (2) differential required to cause failure of the predetermined percent of the

sample, interpolated to the nearest 0.5°C (1°F).

6.1.4.3 For the progressive test in accordance with 5.2.3: (1) differentials used in test and number of containers that failed at each differential, and (2) average differential of failure (corrected for the size of the temperature increment or step used by subtracting one half of the increment; for example, 1.4°C (2.5°F) for a 3°C (5°F) increment).

6.1.4.4 For the high-level test in accordance with 5.2.4: (1) differential used in the test, and (2) number of containers that failed at that differential.

## 7. Precision and Bias

7.1 Statements regarding either precision or bias of the thermal shock test results are not possible because suitable thermal shock reference test materials are not available.

7.2 Test method precision is within  $\pm 1.11^\circ\text{C}$  ( $\pm 2^\circ\text{F}$ ). Test method bias is within  $\pm 1.11^\circ\text{C}$  ( $\pm 2^\circ\text{F}$ ).

## 8. Keywords

8.1 glass containers; thermal shock

*The American Society for Testing and Materials takes no position respecting the validity of any patent rights asserted in connection with any item mentioned in this standard. Users of this standard are expressly advised that determination of the validity of any such patent rights, and the risk of infringement of such rights, are entirely their own responsibility.*

*This standard is subject to revision at any time by the responsible technical committee and must be reviewed every five years and if not revised, either reapproved or withdrawn. Your comments are invited either for revision of this standard or for additional standards and should be addressed to ASTM Headquarters. Your comments will receive careful consideration at a meeting of the responsible technical committee, which you may attend. If you feel that your comments have not received a fair hearing you should make your views known to the ASTM Committee on Standards, at the address shown below.*

*This standard is copyrighted by ASTM, 100 Barr Harbor Drive, PO Box C700, West Conshohocken, PA 19428-2959, United States. Individual reprints (single or multiple copies) of this standard may be obtained by contacting ASTM at the above address or at 610-832-9585 (phone), 610-832-9555 (fax), or service@astm.org (e-mail); or through the ASTM website (www.astm.org).*